

TUTT TUTT S6

TUTT S6 15.6" Triple Portable Monitor Instruction Manual

INTRODUCTION

This manual provides detailed instructions for setting up and operating your TUTT S6 (New Generation) 15.6" Triple Portable Monitor Screen Extender. Please read this guide thoroughly to ensure proper usage and to maximize your productivity with this versatile device.

BOX CONTENTS

- 1 x TUTT S6 Monitor Extender-Host (Rose Gold)
- 2 x USB-A to USB-C cables
- 2 x USB-C to USB-C cables
- 1 x HDMI to Type-C cable
- 1 x H5 2-in-1 High Definition Video Transmission Conversion Cable
- 1 x Carrying Bag
- 1 x Sleeve Stand
- 1 x Single Screen Stand
- 2 x User Guides

TRAVEL ULTRA PORTABLE MONITOR

Magnetic storage & Portable



Magnetic attraction merging



Foldable and split storage



Easy to carry about

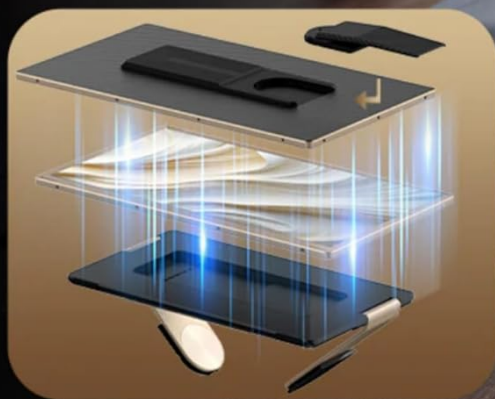


Figure 1: Contents of the TUTT S6 product box.

SETUP AND CONNECTIVITY

The TUTT S6 monitor offers flexible connectivity options to suit various devices. Ensure your laptop or device has the necessary ports for video output and power.

Direct USB-C Connection (Full-Featured)

For laptops with a full-featured USB-C port (supporting both video and power delivery, often indicated by a Thunderbolt symbol), a single USB-C to USB-C cable is sufficient for both video transmission and power. Simply connect one end of the USB-C to USB-C cable to your laptop's full-featured USB-C port and the other end to one of the USB-C ports on the monitor.

H5 2-in-1 Cable Connection (for USB-A or non-full-featured USB-C)

If your laptop does not have a full-featured USB-C port, or if you prefer to use an HDMI connection, utilize the H5 2-in-1 High Definition Video Transmission Conversion Cable. This cable converts regular USB-A or USB-C signals to HDMI for video output.

1. Connect the USB-A or USB-C end of the H5 cable to your laptop.
2. Connect the HDMI end of the H5 cable to the HDMI port on the back of the TUTT S6 monitor.
3. Provide power to the monitor using a separate USB-C to USB-A cable connected to a power source (e.g., wall charger, laptop's USB-A port).

DIY The Various Styles You Need



Figure 2: Rear ports of the TUTT S6 monitor.

Video 1: This video demonstrates how to connect the TUTT S6 monitor using the H5 converter cable, including identifying the correct ports on the monitor and laptop, and ensuring proper power supply. It also covers driver installation and changing display orientation.

Driver Installation

Upon initial connection, your computer may automatically recognize the monitor and install necessary drivers. If a 'USB Display' notification appears, click on it to initiate the driver installation. If not, follow these steps:

1. Go to 'This PC' or 'My Computer' on your system.
2. Locate the 'CD Drive (D:) USB Display' (or similar) under 'Devices and drives'.
3. Double-click to open and run the installer for the 'USB Display' driver.
4. Follow the on-screen prompts to complete the installation. You may need administrator permissions for

installation on company or government computers.

Display Orientation

To adjust the display orientation (e.g., from landscape to portrait):

1. Right-click on your desktop and select 'Display settings'.
2. Identify the monitor you wish to adjust (usually labeled 1, 2, or 3).
3. Scroll down to 'Display orientation' and select your desired orientation (e.g., 'Portrait').
4. Confirm the changes when prompted.

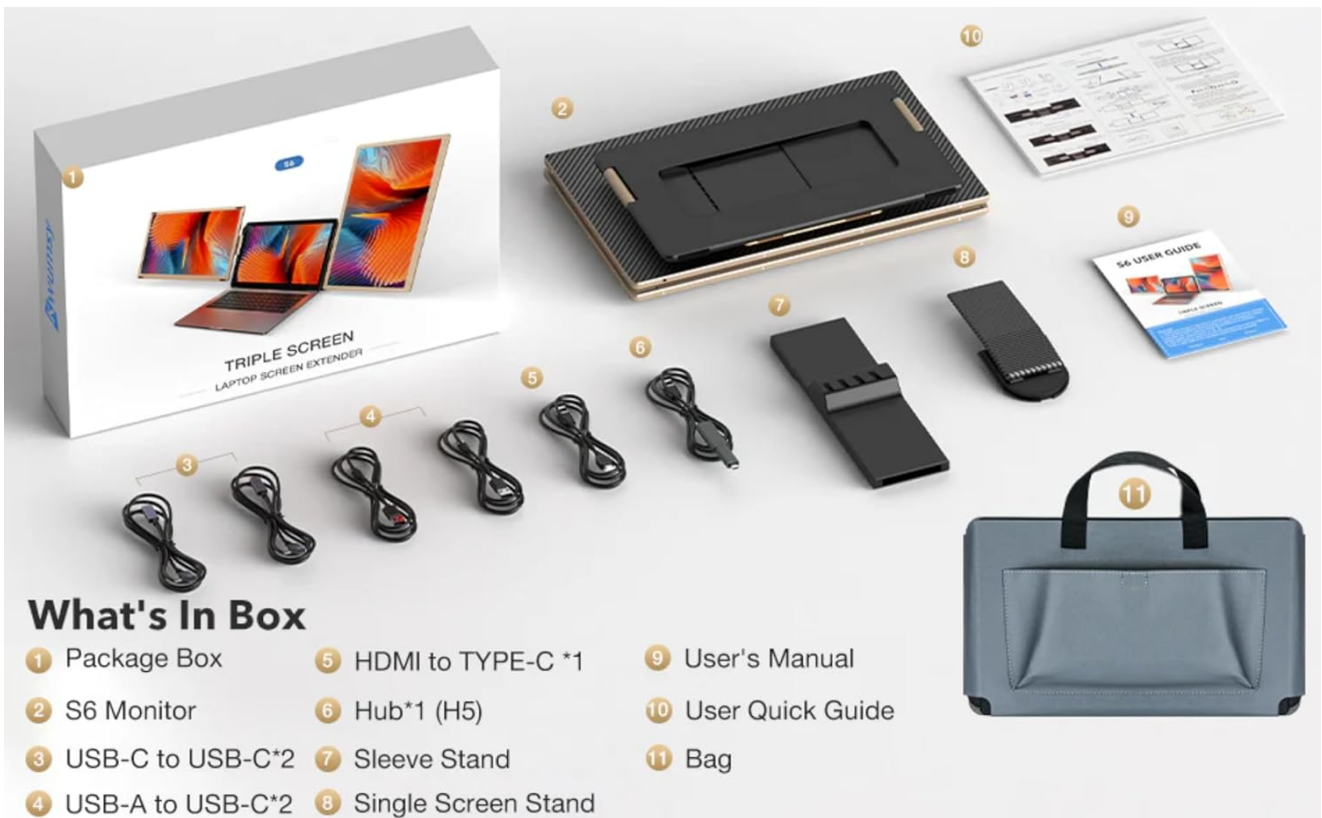
OPERATING INSTRUCTIONS

Efficient Multitasking

The TUTT S6 Triple-Screen Monitor supports various display modes to enhance productivity:

- **Extension Mode:** Extend your desktop across multiple screens for increased workspace.
- **Mirroring Mode:** Duplicate your main screen's content onto the portable monitors, ideal for presentations.
- **Portrait Mode:** Rotate the display for vertical viewing, beneficial for documents or coding.
- **Landscape Mode:** Standard horizontal viewing.

These modes can be configured in your computer's display settings.



What's In Box

- 1 Package Box
- 2 S6 Monitor
- 3 USB-C to USB-C*2
- 4 USB-A to USB-C*2
- 5 HDMI to TYPE-C *1
- 6 Hub*1 (H5)
- 7 Sleeve Stand
- 8 Single Screen Stand
- 9 User's Manual
- 10 User Quick Guide
- 11 Bag

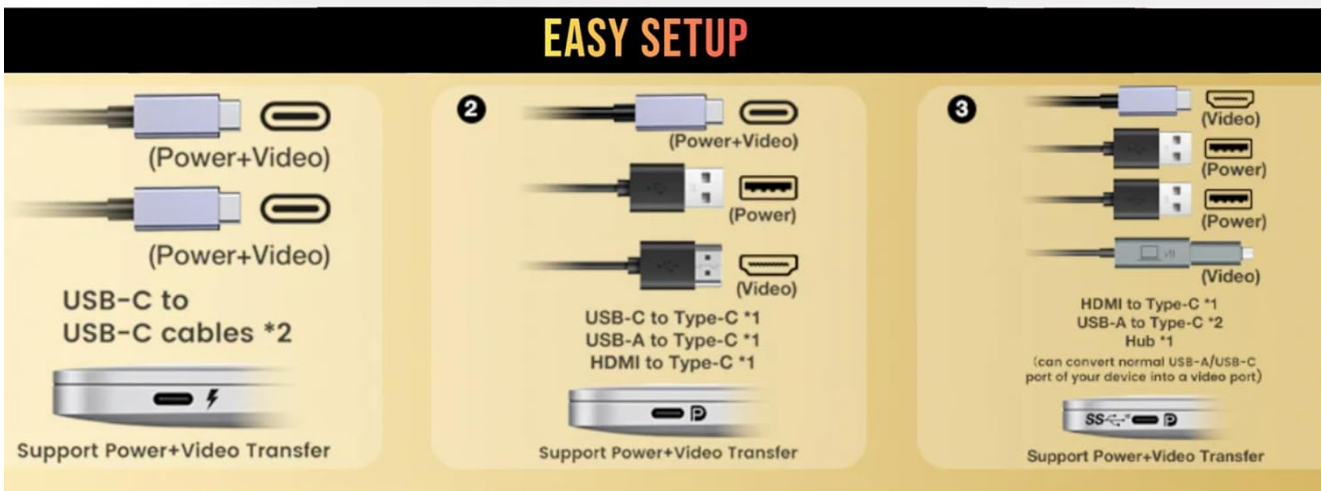


Figure 3: Efficient multitasking with multiple displays.

Flexible Stand Design

The monitor features a lightweight all-aluminum frame and an adjustable stand for personalized comfort. You can adjust height, pivot, swivel, and tilt. The intelligent cooling base also serves as a stable stand and enhances heat dissipation for your laptop.



FLEXIBLE STAND DESIGN



Figure 4: Flexible stand design for optimal viewing.

Also Working with Desktop/Mini PC



Figure 5: DIY various styles for personalized setup.

SPECIFICATIONS

- **Screen size:** 15.6 Inches
- **Resolution:** FHD 1080p (1920x1080 Pixels)
- **Aspect ratio:** 16:9
- **Brightness:** 220 cd/m²
- **Refresh Rate:** 60 Hz
- **Response Time:** 25 Milliseconds
- **Display Type:** IPS
- **Viewing Angle:** 178 Degrees
- **Connectivity Technology:** HDMI, USB-C
- **Total Number of HDMI Ports:** 1
- **Colour:** Black
- **Mounting Type:** Desk Mount

- **Compatible Devices:** Laptops, Desktops, Gaming Consoles, Multimedia Devices
- **Key Features:** Portable design, Glossy screen, Pivot adjustment, Swivel adjustment, Tilt adjustment, Flicker-free technology, Built-in speakers, 16.7 million colors



Figure 6: Key display specifications.

WARRANTY AND SUPPORT

For any technical support inquiries regarding connection or operation, please refer to the dedicated technical support line provided on the product package. Text "Monitor" to the number provided, and a technician will contact you within 90 minutes (text only).