

Manuals+

[Q & A](#) | [Deep Search](#) | [Upload](#)

manuals.plus /

- › [KZKR](#) /
- › [KZKR Snap Grip Mini Mop Instruction Manual - Model LPT42-1](#)

KZKR LPT42-1

KZKR Snap Grip Mini Mop Instruction Manual

Model: LPT42-1

1. INTRODUCTION

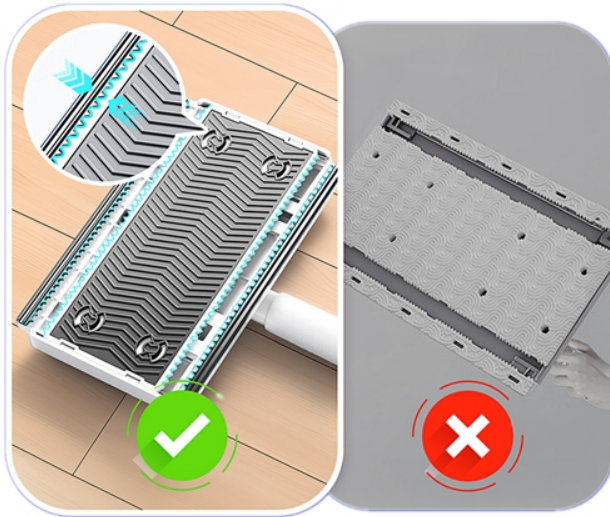
Thank you for choosing the KZKR Snap Grip Mini Mop. This manual provides essential information for the proper assembly, operation, and maintenance of your new cleaning tool. Please read these instructions carefully before use to ensure optimal performance and longevity of the product.



Figure 1: KZKR Snap Grip Mini Mop Overview

2. PRODUCT FEATURES

- **Effortless Corner & Gap Cleaning:** Features a 180° swivel head for flexible access to narrow spaces, including behind toilets and near ceilings.
- **No-Touch Disposable Pad System:** Designed for hygienic use, allowing attachment and release of cleaning pads with a simple press, eliminating direct contact with dirty pads.
- **Versatile Pad Compatibility:** Compatible with various cleaning materials such as facial tissues, wet wipes, and reusable cloths, promoting eco-friendly and cost-effective cleaning.
- **Compact Design:** At approximately 37.4 inches long with a 6.3x3.3 inch head, it is ideal for small areas like kitchens, bathrooms, mirrors, cars, and quick spot-cleaning.
- **Durable Construction:** Equipped with a sturdy stainless-steel handle and an easy-to-replace mop head for long-term use.



Safe On A Variety Of Finished Surface



Larger And Denser Teeth For A Tighter Enough Clamp

Figure 2: Multi-Surface Cleaning Capabilities

3. PACKAGE CONTENTS

- Mop Head (1 unit)
- Stainless Steel Handle Sections (multiple, for assembly)
- Instruction Manual (this document)

4. ASSEMBLY INSTRUCTIONS

Follow these steps to assemble your KZKR Snap Grip Mini Mop:

1. **Connect Handle Sections:** Screw the stainless steel handle sections together firmly until secure.
2. **Attach Handle to Mop Head:** Insert the assembled handle into the designated slot on the mop head. Ensure it clicks into place securely.

Installation Instructions

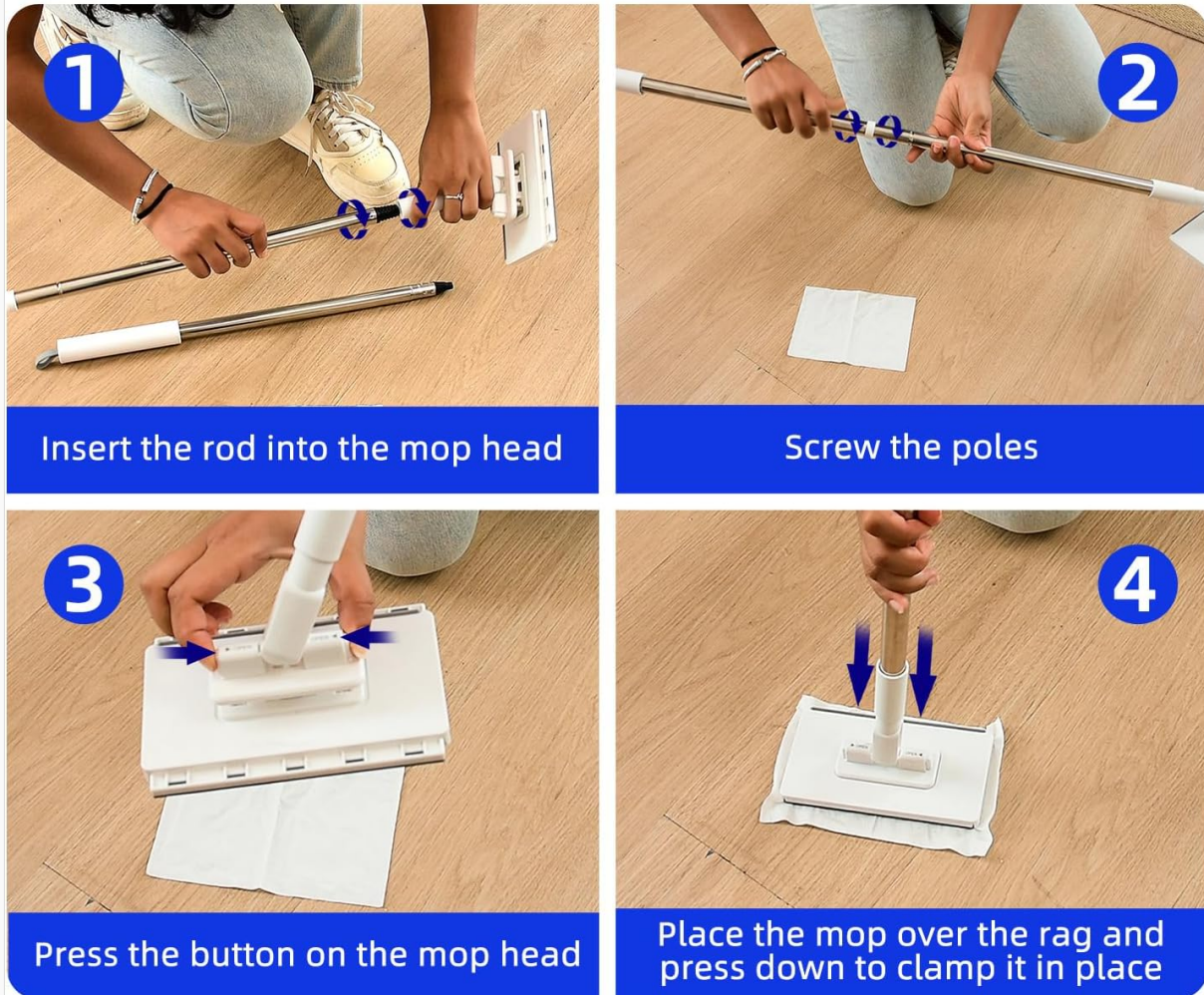


Figure 3: Mop Assembly Steps

Your browser does not support the video tag.

Video 1: Assembly and Functions of the CleanMattix FlexiClamp Mop. This video demonstrates how to assemble the mop handle and attach it to the mop head, as well as how to attach and detach cleaning pads.

5. OPERATING INSTRUCTIONS

5.1 Attaching a Cleaning Pad

1. Lay your chosen cleaning pad (tissue, wet wipe, cloth) flat on the floor.
2. Position the mop head directly over the center of the pad.
3. Press down firmly on the mop head to engage the snap grip mechanism, securing the pad in place.



One-Touch
Disassembly



Sweeping
and Mopping



360° Degree
Rotation



Multi-Surface
Cleaning

Figure 4: Attaching a Cleaning Pad

5.2 Cleaning Surfaces

The 180° swivel head allows for versatile cleaning. Use the mop for:

- Dry sweeping to collect dust, hair, and debris.
- Wet mopping with a damp cloth or wet wipe for spills and stains.
- Reaching under furniture, into tight corners, and along baseboards.
- Cleaning vertical surfaces like walls, windows, and cabinet fronts.

Your browser does not support the video tag.

Video 2: KZKR Mini Sweeper Dry and Wet Dust Mop in action. This video demonstrates the mop's effectiveness for both dry sweeping and wet mopping on various floor types.

5.3 Detaching a Used Cleaning Pad

1. Position the mop head over a trash receptacle.
2. Press the release button on the mop head. The used pad will detach without requiring direct hand contact.
3. Dispose of the used pad.



Compatible With A Variety Of Paper Towels And Rags

Figure 5: No-Touch Pad Release

Your browser does not support the video tag.

Video 3: Mini Sweeper Mop No-Touch Dirty Cleaning. This video highlights the ease of detaching a dirty cleaning pad without direct hand contact.

6. MAINTENANCE

- **Mop Head Cleaning:** Periodically wipe down the mop head with a damp cloth to remove any accumulated dust or residue.
- **Handle Care:** Keep the stainless steel handle dry to prevent water spots or corrosion.
- **Storage:** Store the mop in a dry place, away from direct sunlight and extreme temperatures.

7. TROUBLESHOOTING

- **Pad Not Securing:** Ensure the cleaning pad is laid flat and the mop head is pressed down firmly and evenly. Check for any obstructions in the clamping mechanism.
- **Handle Loosening:** Tighten all handle sections by twisting them clockwise until they are snug.
- **Ineffective Cleaning:** Replace the cleaning pad if it is saturated or heavily soiled. For tough stains, use an appropriate cleaning solution with a wet pad.

8. SPECIFICATIONS

Attribute	Detail
Brand	KZKR
Model Number	LPT42-1
Head Material	Polyester

Handle Material	Plastic, Stainless Steel
Item Weight	12 ounces (0.34 Kilograms)
Package Dimensions	17.95 x 3.7 x 2.05 inches
Surface Recommendation	Hardwood, Tile



Figure 6: Product Dimensions

9. WARRANTY AND SUPPORT

For warranty information or customer support, please refer to the product packaging or contact KZKR customer service directly. Keep your purchase receipt for any warranty claims.