



Manuals.plus /

› VIKNAN /

› VIKNAN 15.6 Inch Android Car Radio Instruction Manual for GMC Sierra Chevrolet Silverado (2019-2023)

VIKNAN B0DDCCJDVW

VIKNAN 15.6 Inch Android Car Radio Instruction Manual

For GMC Sierra & Chevrolet Silverado (2019-2023)

INTRODUCTION

This manual provides detailed instructions for the installation, operation, and maintenance of your VIKNAN 15.6 Inch Touch Screen Android Car Radio. This unit is designed to upgrade the infotainment system in compatible GMC Sierra and Chevrolet Silverado models from 2019 to 2023, offering advanced features such as wireless CarPlay, Android Auto, and GPS navigation while retaining original vehicle functionalities.



Image: The VIKNAN 15.6-inch Android Car Radio seamlessly integrated into a vehicle's dashboard, displaying various application icons. Below, two smaller images show the original 7-inch and 8-inch factory screens for comparison.

VEHICLE COMPATIBILITY

This VIKNAN Android Car Radio is specifically designed for the following vehicle models and years:

- GMC Sierra: 2019, 2020, 2021, 2022, 2023
- Chevrolet Silverado: 2019, 2020, 2021, 2022, 2023

It is engineered to replace original 7-inch and 8-inch factory screens and supports both manual and automatic AC controls.

Fit For Chevrolet silveado 2019–2023

Car Multimedia can connect to the Internet, download the apps you need for free through the APP Store.



Image: A Chevrolet Silverado truck is shown in a scenic outdoor setting, with an overlay of the VIKNAN 15.6-inch car multimedia unit, emphasizing its compatibility with 2019-2023 models.

PACKAGE CONTENTS

Please verify that all components are present in the package before beginning installation:

- 15.6 Inch Android Head Unit
- Vehicle-specific Mounting Frame
- Power Cables (836A and 836B for different original car power plugs)
- GPS Antenna
- USB Cables
- RCA Cables
- External Microphone
- Owner's Manual
- Additional accessories as required for specific vehicle configurations



Image: A flat lay of all components included in the VIKNAN 15.6-inch Android Car Radio package, including the main screen unit, wiring harnesses, GPS antenna, USB cables, and other installation accessories.

INSTALLATION GUIDE

The VIKNAN Android Car Radio is designed for a plug-and-play installation, retaining most original vehicle functions. Professional installation is recommended, but the process can be performed by users with technical aptitude.

1. Preparation

- Ensure the vehicle's ignition is off and the battery is disconnected before starting.
- Gather necessary tools (e.g., trim removal tools, screwdrivers).

2. Removing the Original Unit

Carefully remove the original factory radio and dashboard trim. Refer to your vehicle's service manual for specific instructions on trim panel removal.

COMPARISON BEFORE AND AFTER INSTALLATION



Original 7 inch



Original 8 inch

BEFORE INSTALLATION



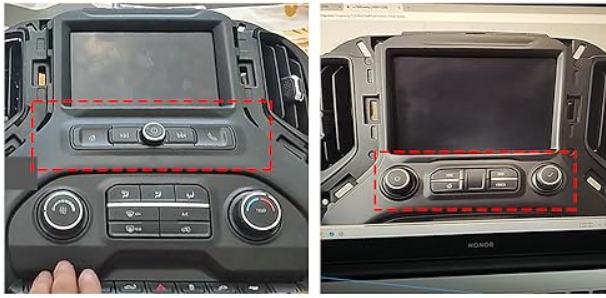
AFTER INSTALLATION

Image: A visual comparison showing the vehicle's dashboard with the original 7-inch and 8-inch screens, contrasted with the dashboard after the installation of the larger VIKNAN 15.6-inch Android Car Radio.

3. Wiring Connections

Connect the provided wiring harnesses to the new head unit and the vehicle's existing connectors. Pay close attention to the power cable selection based on your original car's power plug color:

- If the original car's power plug is **black**, use power cable **836A**.
- If the original car's power plug is **white**, use power cable **836B**.



1. The original car panel had only one knob in the middle, which was a **7-inch** screen
2. The original car's **8 inch** screen has two knobs in the middle of the picture on the right.



836A



The original car's power plug is black

use 836A



836B



The original car's power plug is white

use 836B

Please select and use a power cable based on your original car year

Image: A diagram illustrating the two types of power cables (836A and 836B) and their corresponding original car power plug colors (black and white) for correct installation.

4. Mounting the New Unit

Secure the new 15.6-inch head unit into the dashboard opening using the provided mounting frame and hardware. Reinstall any removed trim panels.

5. Post-Installation Check

- Reconnect the vehicle battery.
- Turn on the ignition and verify that the unit powers on correctly.
- Test all functions, including audio, touch screen response, and steering wheel controls.

INITIAL SETUP

1. System Settings Configuration

After initial power-on, you may need to configure system settings to match your vehicle. Navigate to the 'Console' application, then 'Settings' to access the system configuration menu.

1. Tap on the 'Console' icon.
2. Select 'Settings'.
3. Choose 'System settings'.
4. Select 'Setting Guide'.
5. Enter the password **8861** when prompted.
6. From the 'Car model / Ac' menu, select the option that corresponds to your vehicle's make, model, and original screen size (e.g., 'Silverado New' for 7-inch manual AC, 'Silverado' for 8-inch auto AC). You may need to try different options to find the correct configuration for full functionality.

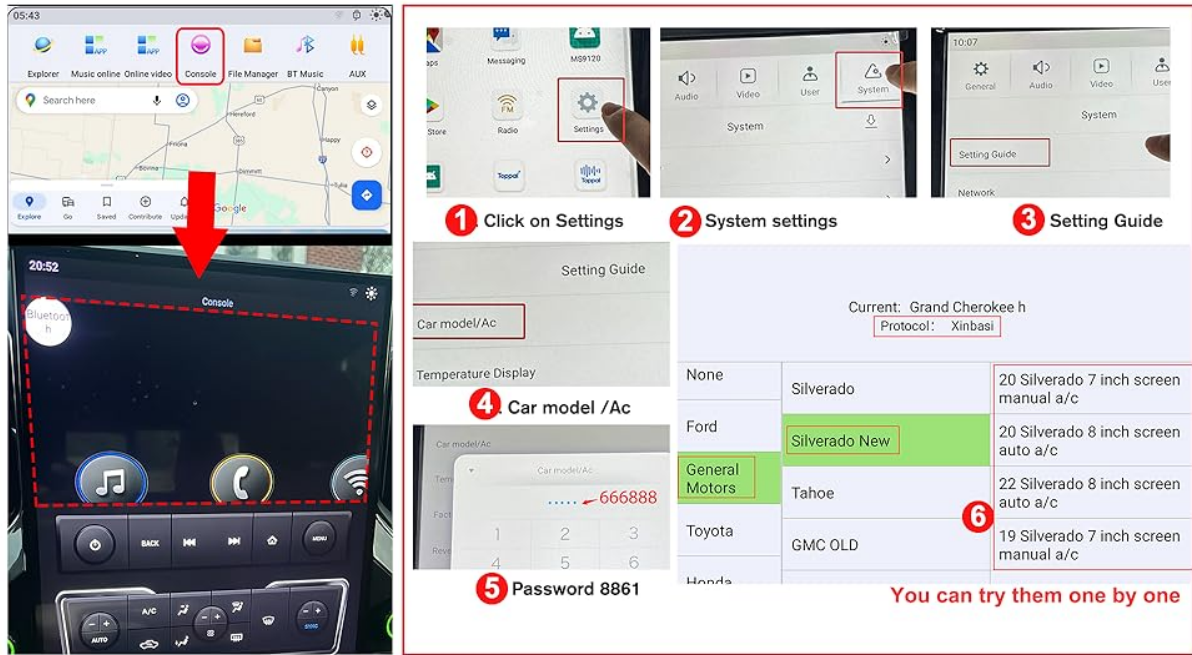


Image: A series of screenshots illustrating the navigation path within the VIKNAN unit's interface to access system settings, including selecting the car model and entering the password.

2. Bluetooth Pairing

To connect your smartphone via Bluetooth for calls and audio streaming:

1. On the head unit, navigate to the 'Phone' application.
2. Ensure Bluetooth is enabled on your smartphone and set to discoverable.
3. On the head unit, tap 'Add Phone' or search for available devices.
4. Select your phone from the list of discovered devices.
5. Confirm the pairing code displayed on both the head unit and your phone.

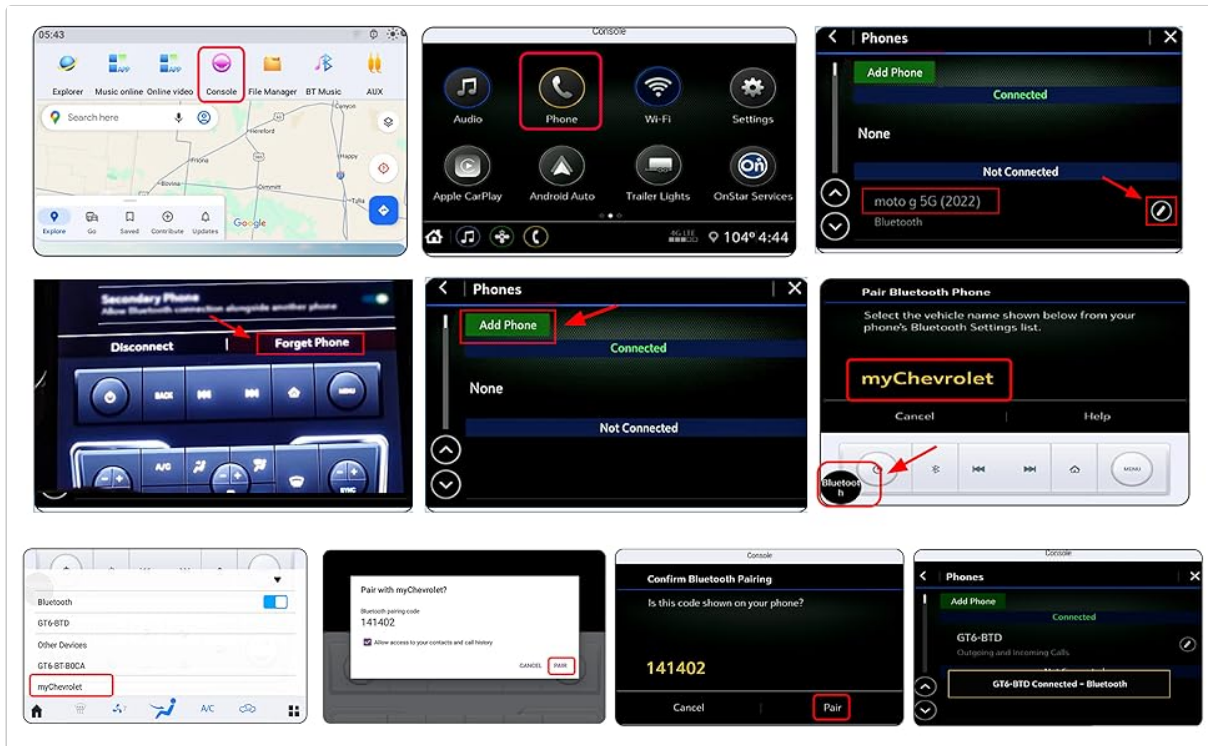


Image: A grid of screenshots showing the step-by-step process of pairing a smartphone via Bluetooth to the VIKNAN

OPERATING INSTRUCTIONS

1. Dual Operation System

The unit operates with a dual system: the Android system for advanced features and the original car system for retaining factory controls. You can switch between these modes as needed.



Image: A split image displaying the user interface of the Android system on the left, showing various apps, and the original car system (OEM) interface on the right, with climate controls and basic functions.

2. Wireless CarPlay & Android Auto

Connect your iPhone or Android smartphone wirelessly to access CarPlay or Android Auto. This allows for integrated navigation, communication, and media playback through the head unit's display.

Built-in Carplay & Android Auto

Wired & Wireless Apple Carplay, Wired Android Auto. Customers only need use WIFI/Bluetooth connect your android phone or iPhone with the stereo to realize Carplay/Android Auto function.



Image: A smartphone is shown next to the VIKNAN unit, which displays the Apple CarPlay interface, indicating support for both wired and wireless Apple CarPlay and Android Auto.

3. GPS Navigation

The unit features built-in GPS navigation. You can use pre-installed maps or download additional navigation applications from the Play Store. Both online and offline maps are supported.



Image: The VIKNAN unit displays a detailed GPS navigation map, with icons for various map applications shown above, highlighting its built-in navigation capabilities.

4. Rear View Camera Support

The system automatically displays the rear view camera feed when the vehicle is shifted into reverse gear, enhancing safety by reducing blind spots.



Image: The VIKNAN unit displays a rear view camera feed with dynamic parking guidelines, demonstrating its support for rear view cameras and improved traffic safety.

5. Multimedia and Connectivity

- **Bluetooth 5.0:** For stable audio streaming and hands-free calling.
- **Wi-Fi & SIM Card Slot:** For internet connectivity, allowing app downloads and online services.
- **App Store Access:** Download and install various Android applications.
- **Steering Wheel Control:** Retains original steering wheel control functionality for convenience.
- **Original Car Functions:** Supports factory amplifier system, Sirius XM radio, Onstar System, heating and cooling seat control, and original 360 camera/reverse camera.

MAINTENANCE

- **Screen Cleaning:** Use a soft, lint-free cloth to clean the touch screen. Avoid abrasive cleaners or solvents.
- **Software Updates:** Periodically check for software updates to ensure optimal performance and access to new features. Follow instructions provided by VIKNAN for update procedures.
- **Environmental Conditions:** Avoid exposing the unit to extreme temperatures or direct sunlight for prolonged periods.

TROUBLESHOOTING

No Power / Unit Not Turning On:

Check all power connections, especially the main power harness. Ensure the vehicle battery is properly connected and charged. Verify the correct power cable (836A or 836B) was used during installation.

No Audio Output:

Confirm all audio cables are securely connected. Check the volume settings on both the head unit and the vehicle's original audio system. Ensure the correct system configuration is selected in the 'Setting Guide' (refer to Initial Setup).

Touch Screen Unresponsive or Inaccurate:

If the touch screen is not responding correctly, perform a calibration. To do this, touch the screen with all five fingers simultaneously and hold until a calibration prompt appears. Follow the on-screen instructions to recalibrate by touching the indicated boxes.

CarPlay / Android Auto Not Connecting:

Ensure Bluetooth and Wi-Fi are enabled on both the head unit and your smartphone. Try restarting both devices. Verify that the correct pairing procedure was followed. Check for any software updates for the head unit or your phone's operating system.

Original Car Functions Not Working:

Revisit the 'Setting Guide' in the system settings and ensure the correct car model and AC type are selected. Incorrect configuration can lead to loss of original vehicle functionalities.

SPECIFICATIONS

Display Size	15.6 Inches
Operating System	Android 13
Processor	8-core Qualcomm Snapdragon CPU
Memory	128GB
Display Resolution	1920*1440
Connectivity	Bluetooth 5.0, Wi-Fi, SIM card slot
Special Features	Wireless CarPlay, Android Auto, GPS Navigation, Steering Wheel Control Support, Rear View Camera Support
Item Weight	11.03 pounds
Product Dimensions	5 x 7 x 9 inches

WARRANTY AND CUSTOMER SUPPORT

VIKNAN offers comprehensive support for your product:

- **Warranty:** 1-year warranty from the date of purchase.
- **Return Policy:** 30-day no-reason refund policy.

- **Technical Support:** Lifetime technical support is available.
- **Contact:** For assistance, please contact VIKNAN customer service via email at viknav007@outlook.com. Expect a response within 24 hours.
- Installation manuals and videos are also available upon request.



Image: A group of customer service representatives wearing headsets, symbolizing the available after-sales support for VIKNAN products.