

## eSUN eSpool+-US

# eSUN eSpool+ Reusable and Detachable Refilament Reel User Manual

Model: eSpool+-US

## 1. PRODUCT OVERVIEW

The eSUN eSpool+ is an upgraded, reusable, and detachable filament reel designed for 3D printer refilaments. It is specifically engineered for eSUN Filament 3D Printer newest refilament (88.5 x 60 x 3mm) and is compatible with Bambu Lab refilament. This innovative design allows for repeated assembly and disassembly, offering significant advantages in storage space and cost reduction by minimizing the waste associated with disposable reels.

Constructed from durable ABS material, the eSpool+ boasts high impact resistance, toughness, and strength. Its white appearance allows for real-time monitoring of remaining filament usage. The high temperature resistance and large hollow structure facilitate faster drying of 3D printer filament when used with a dryer box like the eSUN eBOX Lite.



Figure 1: The eSUN eSpool+ showing its two detachable halves.

## 2. KEY FEATURES

- **Removable & Reusable Design:** Specifically designed for eSUN and Bambu Lab refilaments, allowing for repeated assembly and disassembly to save space and reduce waste.
- **Durable & Sturdy Construction:** Made from high-impact ABS material, ensuring longevity and strength.
- **Visible Filament Monitoring:** White appearance allows for easy monitoring of filament levels.
- **Enhanced Drying:** High temperature resistance and large hollow structure aid in faster filament drying.
- **High Compatibility:** Disk Diameter 200mm, Reel Height 67.2mm, Disk Thickness 4mm. Compatible with most 0.5KG, 0.75KG, and 1KG spoolless filaments.

**Important Note:** This eSpool+ does not fit for cardboard spool rewind or the old version eSUN refilament. Please verify your refilament size before purchase.

# Compatible Size

Notice: Filament is not included.

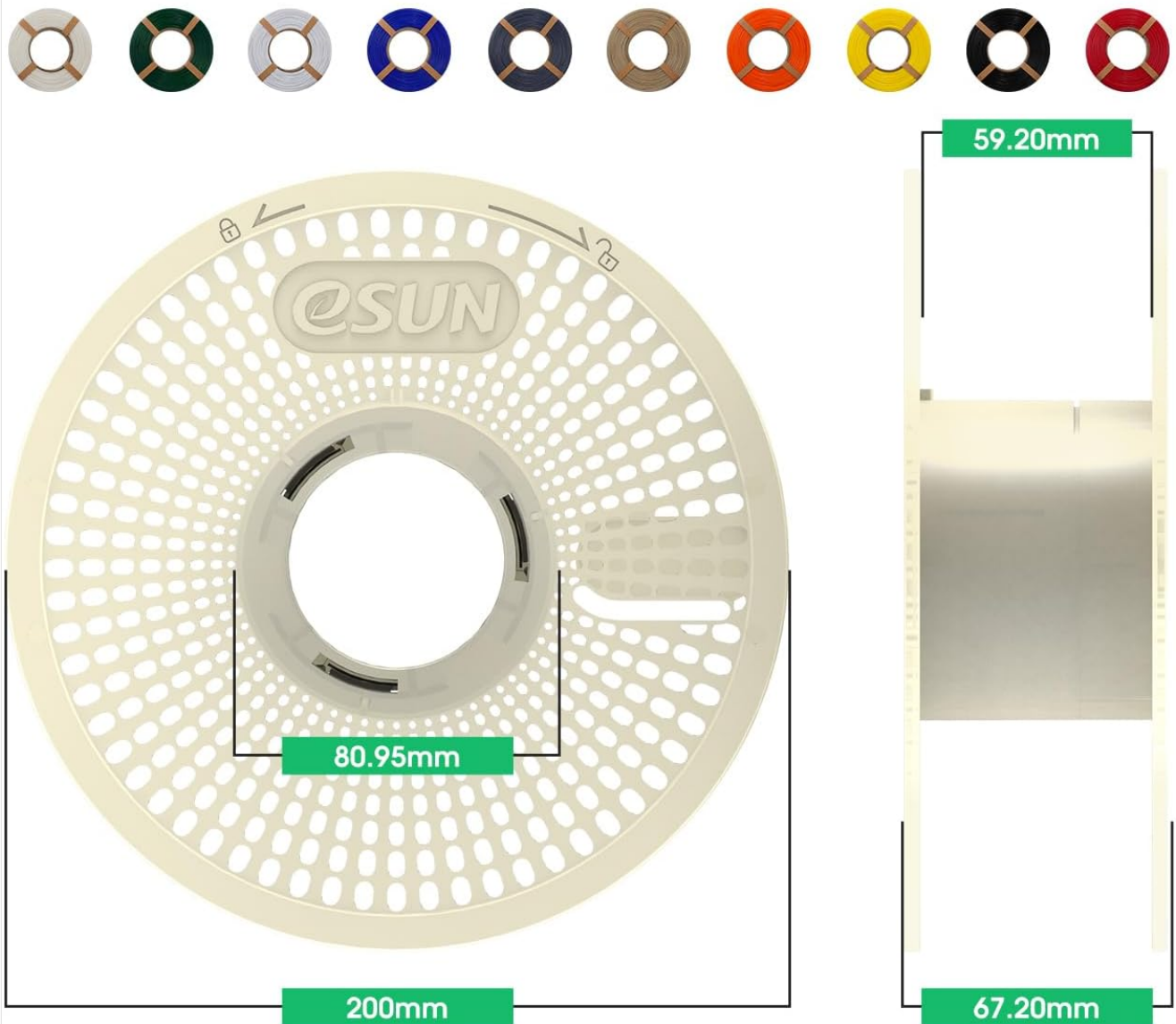


Figure 2: Dimensions of the eSUN eSpool+ for compatibility reference. The image shows a disk diameter of 200mm, a reel height of 67.2mm, and an inner diameter of 80.95mm.

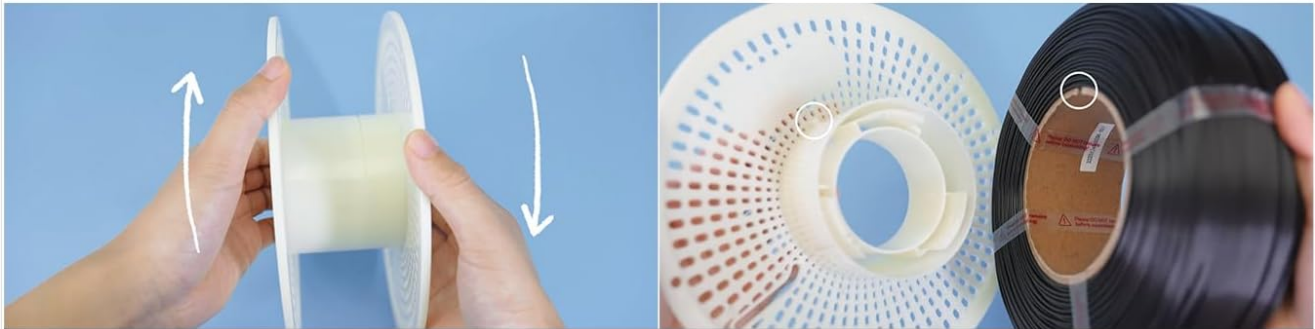
## 3. SETUP AND ASSEMBLY

The eSpool+ is designed for easy assembly and disassembly. Follow these steps to prepare your reel for filament loading:

1. **Open the Spool:** Hold one half of the eSpool+ firmly. Rotate the other half counterclockwise to unlock and separate the two disks.
2. **Align Refilament:** Place one disk flat. Take your refilament and align the protrusions on the eSpool+ disk with the corresponding dents on the refilament's core.
3. **Insert and Lock:** Place the second eSpool+ disk onto the other side of the refilament, aligning its protrusions with the dents. Rotate this second disk clockwise until it locks securely in place.
4. **Secure Filament End:** After confirming the reel is locked, carefully remove any rolling strip or tape securing

the filament. Fix the end of the filament into the designated hole on the reel to prevent tangling.

# How to Use



1. Rotate counterclockwise to open the spool, aligning the protrusions on the spool with the dent on the refillment.



2. Insert the other half of the spool into the slot and rotate clockwise to lock it in place.



3. After confirming the locking of the reel, remove the rolling strip and fix the filament end in the hole of the reel.

Figure 3: Step-by-step visual guide for assembling the eSpool+ and loading filament. The image shows the process of opening the spool, aligning the filament, locking the spool, and securing the filament end.

## 4. OPERATING INSTRUCTIONS

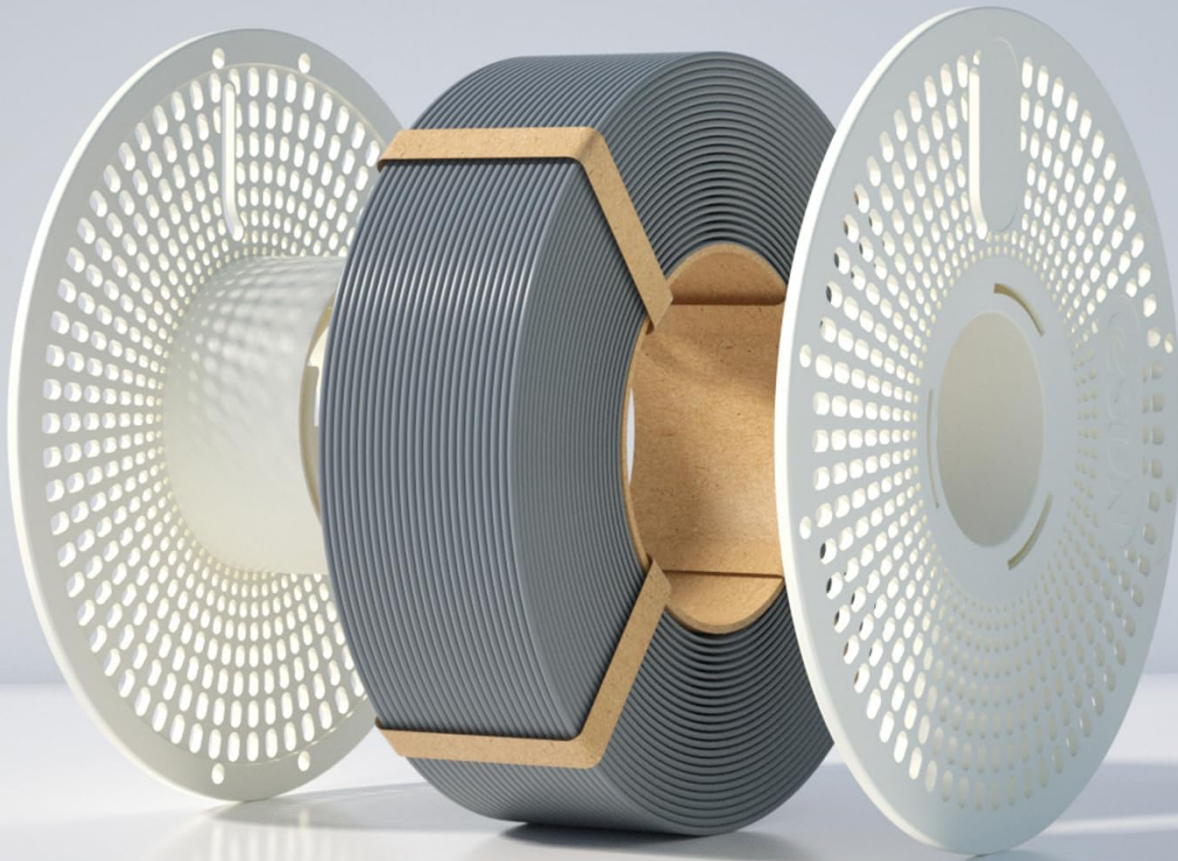
Once assembled with filament, the eSpool+ functions like a standard filament spool. It is ready to be mounted on your 3D printer's filament holder.

- **Mounting:** Place the assembled eSpool+ onto your 3D printer's filament spool holder. Ensure it rotates freely without obstruction.
- **Feeding Filament:** Guide the filament from the eSpool+ into your printer's extruder mechanism according to your printer's specific instructions.
- **Drying Filament:** For optimal print quality, especially with hygroscopic filaments, the eSpool+ can be used in conjunction with a filament dryer box, such as the eSUN eBOX Lite. Its hollow structure promotes efficient drying.



## Easy-to-use | Reusable

Orderly wrapped and reduce the waste of reel.



Notice: Filament is not included.

Figure 4: The eSpool+ with a filament refill loaded, demonstrating its easy-to-use and reusable nature. The image highlights the orderly wrapped filament and the reduction of reel waste.

## 5. MAINTENANCE AND STORAGE

Proper care and storage will extend the lifespan of your eSpool+.

- **Cleaning:** If necessary, wipe the eSpool+ with a dry or slightly damp cloth. Avoid harsh chemicals that could damage the ABS material.
- **Storage:** When not in use, especially if storing without filament, disassemble the eSpool+ to save space. Store the disks in a cool, dry place away from direct sunlight.
- **Filament Storage:** Always store filament in a dry environment, preferably in a sealed bag with desiccant, whether on the eSpool+ or separately.

# Durable and Visible ABS Filament Reel



Reusable



Save Space



Removable

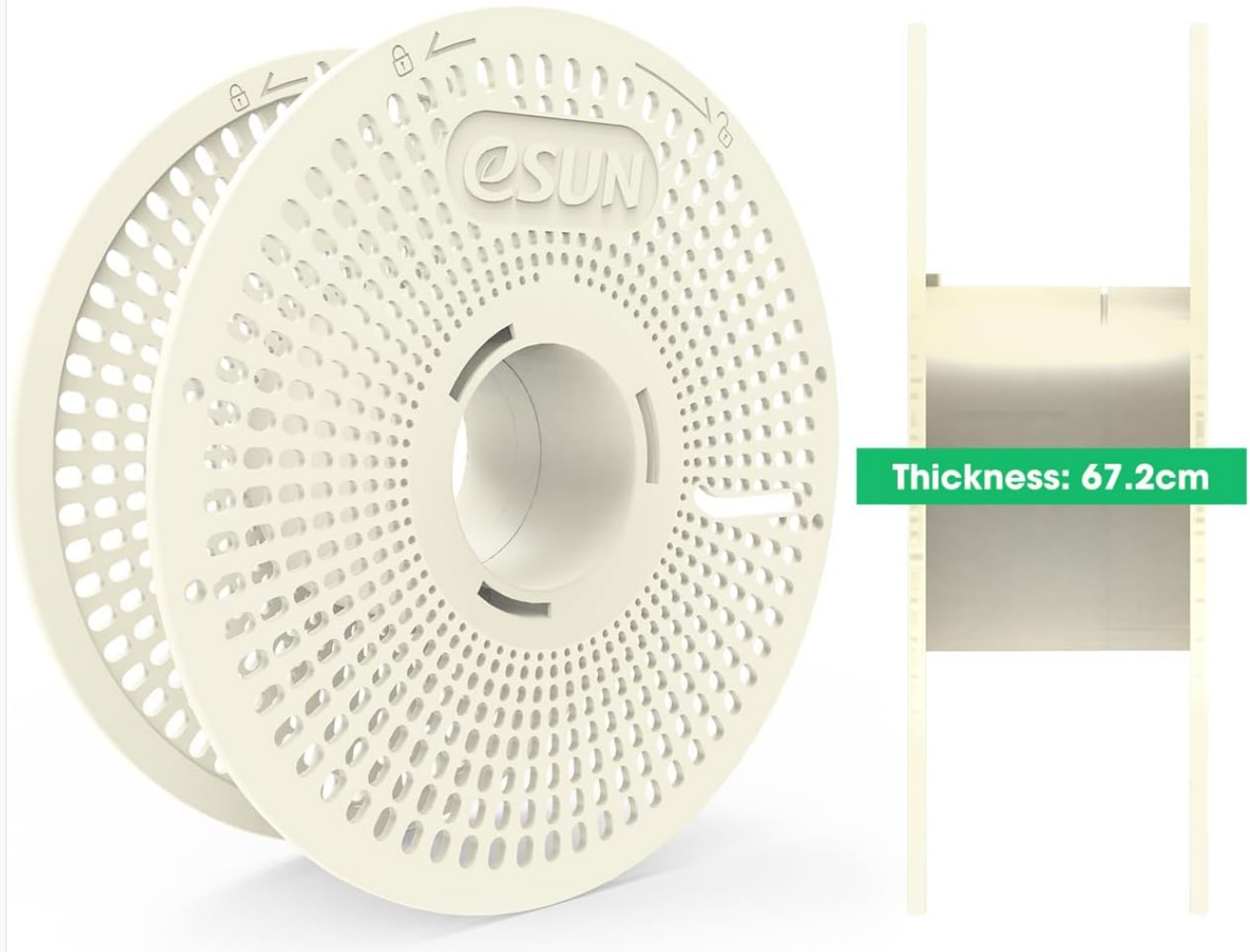


Figure 5: Visual representation of the eSpool+'s durable ABS construction, highlighting its reusability, space-saving design, and removable nature. The image also shows the thickness of the reel at 67.2mm.

## 6. TROUBLESHOOTING

If you encounter issues with your eSpool+, consider the following:

- **Spool Not Locking:** Ensure the protrusions on the eSpool+ disks are correctly aligned with the dents on the refilament. Apply firm, even pressure while rotating clockwise to lock.
- **Filament Not Fitting:** Confirm that your refilament is compatible with the eSpool+. This reel is designed for eSUN's newest refilament (88.5 x 60 x 3mm) and Bambu Lab refilament. It is not compatible with cardboard spools or older eSUN refilament versions. Refer to the "Compatible Size" diagram in Section 2.
- **Filament Tangling:** Always secure the filament end in the designated hole on the reel when not actively printing or when storing.

## 7. SPECIFICATIONS

| Feature            | Detail   |
|--------------------|--|
| Product Name       | eSUN Upgraded eSpool+ Reusable and Detachable Refilament Reel  |
| Model Number       | eSpool+-US   |
| Material           | Acrylonitrile Butadiene Styrene (ABS)  |
| Disk Diameter      | 200 mm   |
| Reel Height        | 67.2 mm  |
| Disk Thickness     | 4 mm   |
| Compatibility      | eSUN Filament 3D Printer newest refilament (88.5 x 60 x 3mm), Bambu Lab refilament, Most 0.5KG, 0.75KG, and 1KG spoolless filaments. |
| Package Contents   | 1 Pack eSpool+ (includes 2pcs round disks)   |
| Item Weight        | 7.4 ounces (0.21 Kilograms)  |
| Package Dimensions | 8.46 x 8.27 x 2.91 inches  |

# Packing List

---



Figure 6: The contents of the eSpool+ package, showing the two round disks that make up one eSpool+ unit.

## 8. WARRANTY AND SUPPORT







Specific warranty information for the eSUN eSpool+ is not provided in this manual. For details regarding warranty coverage, returns, or technical support, please refer to the official eSUN website or contact the seller directly through your purchase platform.

For further assistance, you may visit the eSUN Store on Amazon: [eSUN Official Store](#).

© 2024 eSUN. All rights reserved.

This manual is for informational purposes only. Specifications are subject to change without notice.



|   |  |
|---|--|
|    | <p><a href="#">eSUN eBOX 3D Printing Filament Dryer User Guide</a></p> <p>User guide for the eSUN eBOX filament dryer, covering setup, operation modes (Gram, Pound, WOC, TEMP, TIME), parameter settings, and specifications for 3D printing filament.</p>  |
|    | <p><a href="#">eSUN 3D Printing Materials: Comprehensive Product Catalog and Guide</a></p> <p>Explore eSUN's extensive range of 3D printing filaments, including PLA, PETG, ABS, and specialty materials. Discover product advantages, applications, and certifications for all your 3D printing needs.</p>                                      |
|    | <p><a href="#">eSUN eBOX Lite User Guide for 3D Printer Filament Dry Box</a></p> <p>Comprehensive user guide for the eSUN eBOX Lite, a filament dry box designed to keep 3D printer filaments in optimal condition. Learn about its features, specifications, operation, and parameter settings for various filament types.</p>                  |
|  | <p><a href="#">eSUN 3D Printer Filament User Guide: Printing Parameters and Troubleshooting</a></p> <p>Comprehensive user guide for eSUN 3D printer filaments, detailing printing parameters for various materials like PLA, ABS, PETG, ePEEK, and troubleshooting tips for common printing issues. Includes guidelines for optimal results.</p> |
|  | <p><a href="#">eSUN eVacuum Kit Pro 3 User Manual: 3D Filament Vacuum Storage Guide</a></p> <p>Comprehensive user manual for the eSUN eVacuum Kit Pro 3, detailing its use, specifications, and troubleshooting for vacuum storage of 3D printer filament. Preserves filament quality by preventing moisture absorption.</p>                     |
|  | <p><a href="#">eSUN PEBA-90A Thermoplastic Elastomer Filament Technical Data Sheet</a></p> <p>Technical data sheet for eSUN PEBA-90A, a high-performance thermoplastic elastomer filament for 3D printing, detailing its properties, applications, and recommended printing parameters.</p>  |

