

Wodgreat AC1300

Wodgreat AC1300 Mbps Dual Band USB WiFi Adapter User Manual

Model: AC1300

INTRODUCTION

The Wodgreat AC1300 Mbps Dual Band USB WiFi Adapter provides high-speed wireless connectivity for your desktop computer or laptop. This compact adapter supports dual-band operation (2.4 GHz and 5 GHz) and MU-MIMO technology, ensuring stable and fast internet access for streaming, gaming, and general browsing. It is compatible with a wide range of Windows and Mac OS operating systems.

AC1300

Super Fast 1300Mbps USB WiFi Adapter




WiFi
1300Mbps



Dual Band 2.4/5G


USB 2.0


WPA Encryption


Mu-Mimo


Stable Signal


802.11 ac/b/g/n


High Gain

Image: The Wodgreat AC1300 Mbps USB WiFi Adapter showcasing its key features including WiFi 1300Mbps, Dual Band 2.4/5G, USB 2.0, WPA Encryption, MU-MIMO, Stable Signal, and High Gain.

SETUP INSTRUCTIONS

Follow these steps to install and set up your Wodgreat AC1300 Mbps USB WiFi Adapter:

- 1. Plug In:** Insert the USB WiFi adapter into an available USB port on your computer.
- 2. Install Driver:**
 - For Windows 11/10, the driver may install automatically.
 - If the driver does not install automatically, use the provided mini CD to install it.
 - Alternatively, drivers can be downloaded from the Wodgreat official website or by searching for 'Realtek 8812BU driver' online.
- 3. Enjoy WiFi:** Once the driver is installed, your computer should detect available wireless networks.

Easy to Install

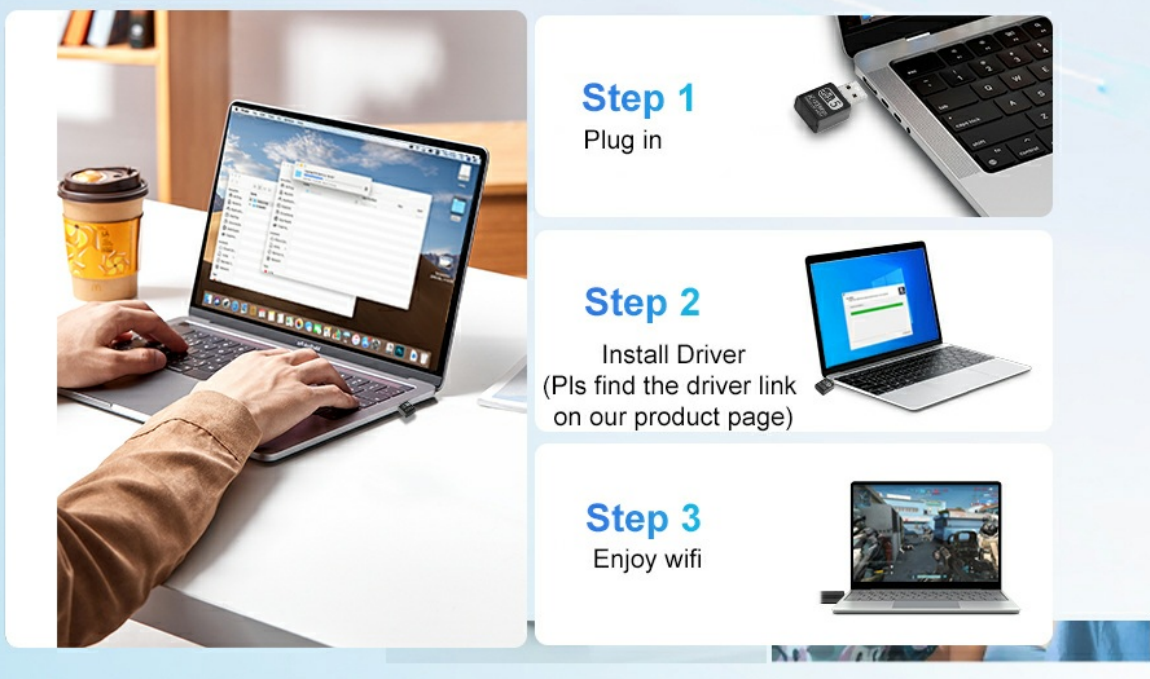


Image: A visual guide illustrating the three simple steps for installing the USB WiFi adapter: 1. Plug in, 2. Install Driver (with a note to find the driver link on the product page), and 3. Enjoy WiFi.

Note on Driver Installation: Many modern PCs do not have CD/DVD drives. If you encounter this, please download the necessary drivers from the manufacturer's support page or search for the Realtek 8812BU chipset driver online.

OPERATING INSTRUCTIONS

After successful driver installation, the adapter will function as your computer's wireless network interface. To connect to a WiFi network:

1. **Access Network Settings:** On Windows, click the WiFi icon in the system tray. On Mac OS, click the WiFi icon in the menu bar.
2. **Select Network:** A list of available wireless networks will appear. Select your desired network.
3. **Enter Password:** If prompted, enter the network security key (password).
4. **Connect:** Click 'Connect' to establish the wireless connection.

The adapter supports both 2.4 GHz and 5 GHz bands. Your computer will automatically connect to the optimal band available, or you may have the option to select a specific band if your router broadcasts separate SSIDs for each.



1300Mbps USB WiFi Adapter

MU-MIMO technology for
a fast internet connection

Image: A person typing on a laptop with the Wodgreat AC1300 Mbps USB WiFi Adapter discreetly plugged into a side USB port, indicating active wireless connectivity.

MAINTENANCE

To ensure optimal performance and longevity of your Wodgreat AC1300 Mbps USB WiFi Adapter:

- Keep the adapter clean and free from dust. Use a soft, dry cloth for cleaning.
- Avoid exposing the adapter to extreme temperatures, humidity, or direct sunlight.
- Do not attempt to disassemble or modify the adapter, as this will void the warranty.
- When not in use for extended periods, it is recommended to safely remove the adapter from the USB port.

TROUBLESHOOTING

If you encounter issues with your USB WiFi adapter, consider the following troubleshooting steps:

No Internet Connection or Slow Speed:

- **Driver Check:** Ensure the correct driver is installed. You can verify this in your operating system's Device Manager (Windows) or System Information (Mac OS). Reinstall the driver if necessary.
- **USB Port:** Try plugging the adapter into a different USB port. Ensure it's a USB 2.0 or 3.0 port for optimal performance.
- **Router Distance:** Proximity to your WiFi router affects signal strength. Move closer to the router to improve connection stability and speed.
- **Band Selection:** If your router broadcasts both 2.4 GHz and 5 GHz networks, try connecting to the 5 GHz band for potentially faster speeds, especially in less congested environments. The 2.4 GHz band offers better range.
- **Interference:** Other electronic devices (microwaves, cordless phones) can cause interference. Try to minimize these sources near your computer and adapter.


- **Router Reboot:** Restart your WiFi router and modem.

Driver Installation Issues:


- If the mini CD is not usable, download the driver directly from the manufacturer's website or search for 'Realtek 8812BU driver' for your specific operating system version.
- Ensure your operating system is supported (Windows 11/10/8.1/8/7/XP, Mac OS X 10.9-10.15).

Compatible Systems

Systems




Windows 11/10/8.1/8/7




Mac OS 10.9-10.15

Devices



Laptop



Desktop



Image: The Wodgreat AC1300 Mbps USB WiFi Adapter displayed alongside logos for compatible operating systems: Windows 11/10/8.1/8/7 and Mac OS 10.9-10.15, indicating broad system support.

SPECIFICATIONS

Feature	Detail
Brand	Wodgreat
Model	AC1300
Interface	USB
Color	Black

Compatible Devices	Computer, Laptop
Data Link Protocol	IEEE 802.11a/b/g/n/ac
Data Transfer Rate	Up to 1300 Mbps (867 Mbps on 5 GHz, 400 Mbps on 2.4 GHz)
Operating System Compatibility	Windows 11/10/8.1/8/7/XP, Mac OS X 10.9-10.15
Security	WPA/WPA2 Encryption

WARRANTY AND SUPPORT

The Wodgreat AC1300 Mbps Dual Band USB WiFi Adapter comes with a **2-year warranty** from the date of purchase. This warranty covers manufacturing defects under normal use.

For technical support, troubleshooting assistance, or warranty claims, please contact Wodgreat customer service through the retailer where the product was purchased or refer to the official Wodgreat website for contact information.