

Manuals+

[Q & A](#) | [Deep Search](#) | [Upload](#)

manuals.plus /

- › [Monster](#) /
- › [Monster N-Lite 208 Wireless Earbuds User Manual](#)

Monster N-Lite 208

Monster N-Lite 208 Wireless Earbuds User Manual

Model: N-Lite 208

INTRODUCTION

This manual provides detailed instructions for the Monster N-Lite 208 Wireless Earbuds. Please read this guide thoroughly to ensure proper use and optimal performance of your device. These earbuds feature 13mm drivers for powerful sound, Bluetooth 5.4 technology for stable connections, and intuitive touch controls for music and calls. They offer up to 30 hours of total playtime with the charging case and are designed for comfort and portability.

WHAT'S IN THE BOX

- 2 x Bluetooth Headphones (Earbuds)
- 1 x Charging Case
- 1 x USB-C Cable
- 1 x User Manual

What's in the Box

2 X Bluetooth Headphones
1 X Charging Case
1 X USB-C Cable
1 X User Manual



Image: Contents of the Monster N-Lite 208 Wireless Earbuds packaging.

PRODUCT OVERVIEW



Image: The Monster N-Lite 208 Wireless Earbuds and their charging case.



Image: Detailed view of the 13mm dynamic audio driver components.



Image: Smart Touch Control diagram for managing audio and calls.



Image: Bluetooth 5.4 technology for stable and efficient connection.



Ultra-light Designed

Discover the Freedom of Listening with our Ultra-light Headphones



Epitome of Portability

Easily Fit these Lightweight Earbuds into the Pocket or Purse

Image: The compact charging case fits easily into bags for portability.

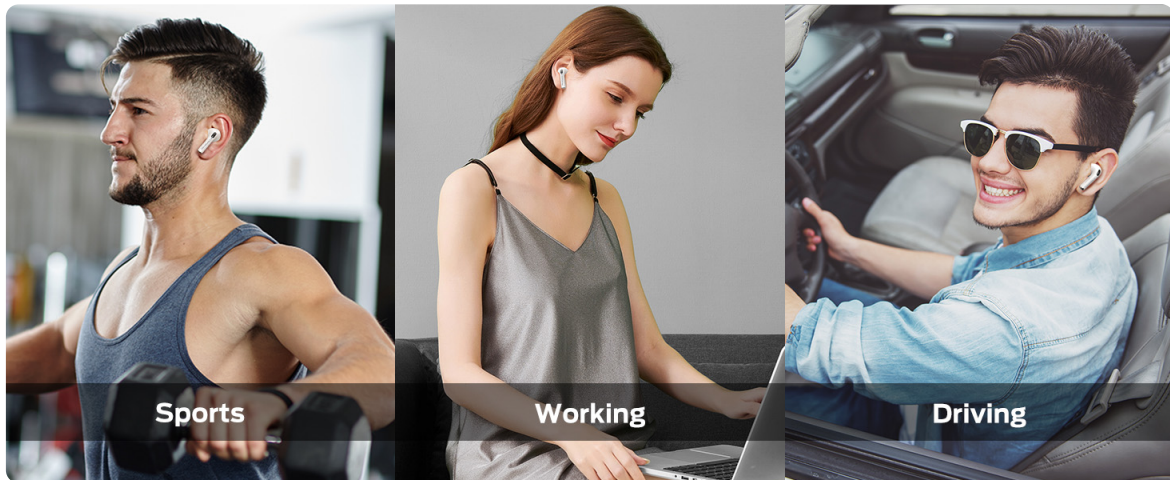


Image: Crystal clear call quality for hands-free conversations.

Video: An overview of the Monster N-Lite 208 Wireless Earbuds, showcasing key features and design.

SETUP

Charging the Earbuds and Case

1. Connect the charging case to a power source using the provided USB-C cable.
2. The charging indicator lights on the case will show the charging status.
3. A full charge for the case and earbuds takes approximately 1.5 hours.

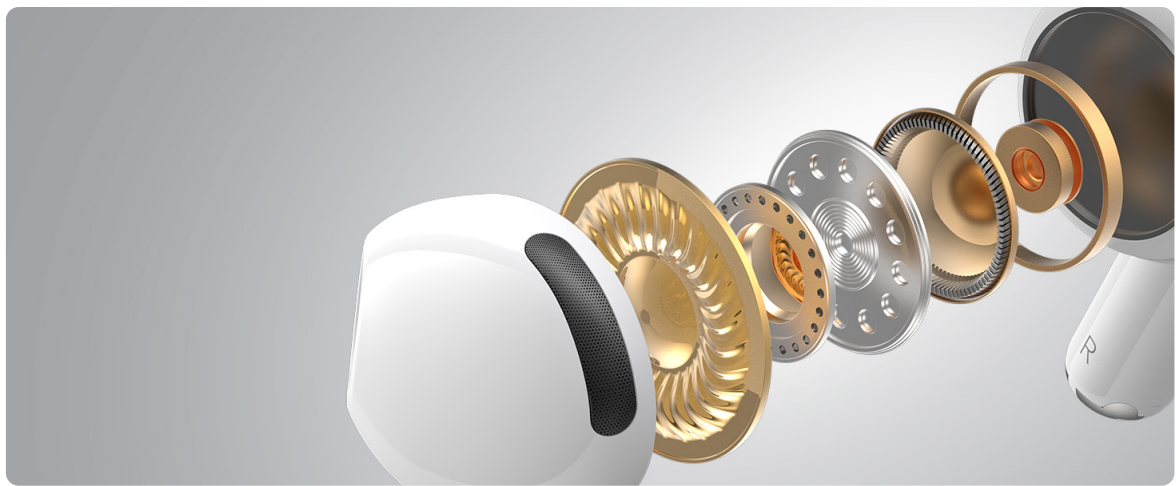


Image: Charging the earbuds case via Type-C, illustrating battery life and charging time.

Pairing with a Device

1. Ensure the earbuds are in the charging case and the case lid is open.
2. On your device (smartphone, tablet, etc.), navigate to Bluetooth settings and enable Bluetooth.
3. Select "Monster N-Lite 208" from the list of available Bluetooth devices.
4. The earbuds will provide an audible indication of successful pairing.
5. The earbuds feature one-step pairing for quick and convenient connection.

OPERATING INSTRUCTIONS

Wearing the Earbuds

1. Gently insert each earbud into your ear canal.
2. Adjust the earbuds until they feel comfortable and secure. A proper fit enhances sound quality and stability, especially during physical activities.



Image: Guide on correctly wearing the earbuds for optimal comfort and sound.

Touch Controls

The Monster N-Lite 208 earbuds feature intuitive touch controls on each earbud for convenient management of audio playback and calls.

- **Play/Pause:** Single tap on either earbud.
- **Next Track:** Double tap on the right earbud.
- **Previous Track:** Double tap on the left earbud.
- **Volume Up:** Triple tap on the right earbud.
- **Volume Down:** Triple tap on the left earbud.
- **Answer/End Call:** Single tap on either earbud during an incoming call.
- **Reject Call:** Press and hold either earbud for 2 seconds during an incoming call.
- **Activate Voice Assistant:** Press and hold either earbud for 2 seconds (when not on a call).

Making and Receiving Calls

The built-in microphones ensure clear call quality. Use the touch controls as described above to manage your calls hands-free.

MAINTENANCE

Cleaning

- Regularly clean the earbuds and charging case with a soft, dry cloth.
- Avoid using liquids or abrasive cleaners, as these can damage the device.
- Ensure the charging contacts on both the earbuds and the case are free of dust and debris.

Storage

- When not in use, always store the earbuds in their charging case to protect them from damage and keep them charged.
- Store the device in a cool, dry place, away from direct sunlight and extreme temperatures.

TROUBLESHOOTING

Earbuds Not Pairing

- Ensure both earbuds are sufficiently charged.
- Place the earbuds back in the charging case, close the lid, wait a few seconds, then open it again to reset the connection.
- Turn off and then turn on Bluetooth on your device.
- If the issue persists, remove or "forget" "Monster N-Lite 208" from your device's Bluetooth settings and attempt to re-pair.

No Sound or Low Volume

- Check the volume levels on both your connected device and the earbuds.
- Ensure the earbuds are properly seated in your ears.
- Re-pair the earbuds with your device.

Charging Issues

- Verify that the USB-C cable is securely connected to both the charging case and the power source.
- Try using a different USB-C cable or power adapter to rule out cable or adapter malfunction.
- Clean the charging contacts on both the earbuds and inside the charging case to ensure proper connection.

SPECIFICATIONS

Feature	Detail
Model Name	Monster N-Lite 208
Connectivity Technology	Wireless (Bluetooth)
Wireless Communication Technology	Bluetooth 5.3
Ear Placement	In Ear
Form Factor	In Ear
Control Type	Touch, Media Control
Audio Driver Size	13 Millimeters
Battery Life (Earbuds)	5 Hours
Total Playtime (with Case)	30 Hours
Charging Time	1.5 Hours
Charging Interface	Type-C USB
Bluetooth Range	10 Meters
Item Weight	0.176 ounces (approx. 5 Grams)
Water Resistance Level	Water Resistant
Color	White
Manufacturer	Monster

WARRANTY AND SUPPORT

Warranty Information

The Monster N-Lite 208 Wireless Earbuds come with a standard manufacturer's warranty. Please refer to the warranty card included in your product packaging for specific terms and conditions regarding coverage, duration, and claims procedures.

Customer Support

For further assistance, technical support, or warranty claims, please contact Monster customer service. You can typically find contact information on the official Monster website or through the retailer where the product was purchased.