

[Manuals.plus](#) /

> [TYNLED](#) /

> TYNLED Owl Table Lamp User Manual

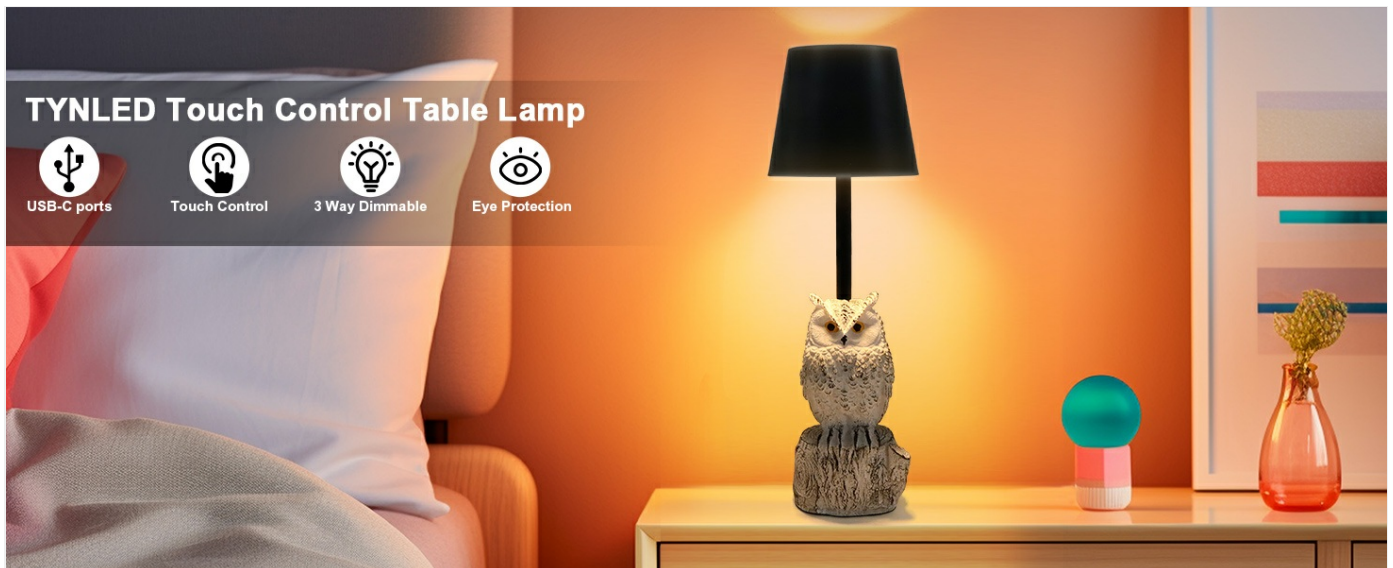
TYNLED Owl lamp

TYNLED Owl Table Lamp User Manual

Model: Owl lamp

INTRODUCTION

Thank you for purchasing the TYNLED Owl Table Lamp. This cordless, touch-controlled lamp features a unique owl design, 3-way dimming, and adjustable color temperatures (warm, natural, white) to suit various environments. It is equipped with a USB-C charging port and a built-in rechargeable battery for portable use. This manual provides detailed instructions for setup, operation, maintenance, and troubleshooting to ensure optimal performance and longevity of your lamp.



Overview of the TYNLED Owl Table Lamp's key features.

WHAT'S IN THE BOX

Please check the package contents to ensure all items are present:

- TYNLED Owl Table Lamp (1 unit)

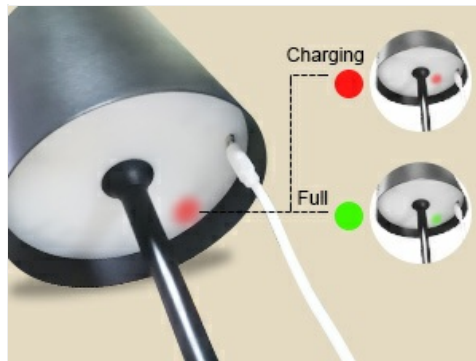
- USB-C Power Cable (1 unit)
- AAA Batteries (1 included, pre-installed or for initial use)

SETUP

Initial Charging

Before first use, fully charge the lamp. The lamp is equipped with a built-in rechargeable battery.

1. Locate the USB-C charging port on the lamp.
2. Connect the provided USB-C power cable to the lamp's charging port.
3. Connect the other end of the USB-C cable to a compatible USB power adapter (not included) or a computer USB port.
4. The charging indicator light will illuminate (typically red) during charging. Once fully charged, the indicator light will change (typically green).



Charging indicator lights: Red for charging, Green for fully charged.

Placement

Place the lamp on a stable, flat surface. Its cordless design allows for flexible placement in various rooms such as bedrooms, dining rooms, kids' rooms, living rooms, or offices.

Wide Application Touch Lamp

 Bedroom	 Living room
 Dinning room	 Baby room
 Study room	 Office

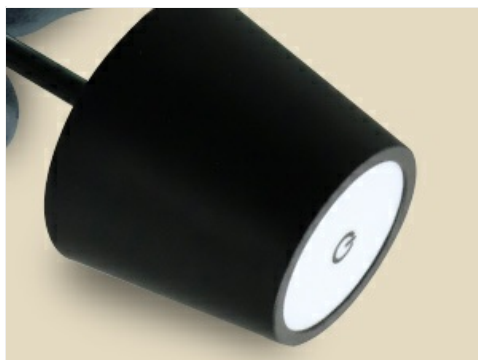


The lamp is suitable for various indoor settings.

OPERATING INSTRUCTIONS

Touch Control Operation

The TYNLED Owl Table Lamp features intuitive touch control located on the top of the lampshade.



The touch control button is located on the top of the lampshade.

Power On/Off and Color Temperature Adjustment

To turn the lamp on or off, and to cycle through color temperatures:

- **Short Press:** Touch the control button briefly to turn the lamp on or off.
- **Short Press (while on):** Continue short pressing to cycle through the three available color temperatures:
 - **2500K Warm Light:** Ideal for accompanying sleep or creating a cozy atmosphere.
 - **4000K Natural Light:** Suitable for reading or general illumination.
 - **6000K White Light:** Best for working or tasks requiring bright, clear light.



3 Color Temperatures

Suitable for Different Scenarios Use
Touch the button switch the color for your needs



Adjustable color temperatures for various scenarios.

Stepless Dimming (10%-100%)

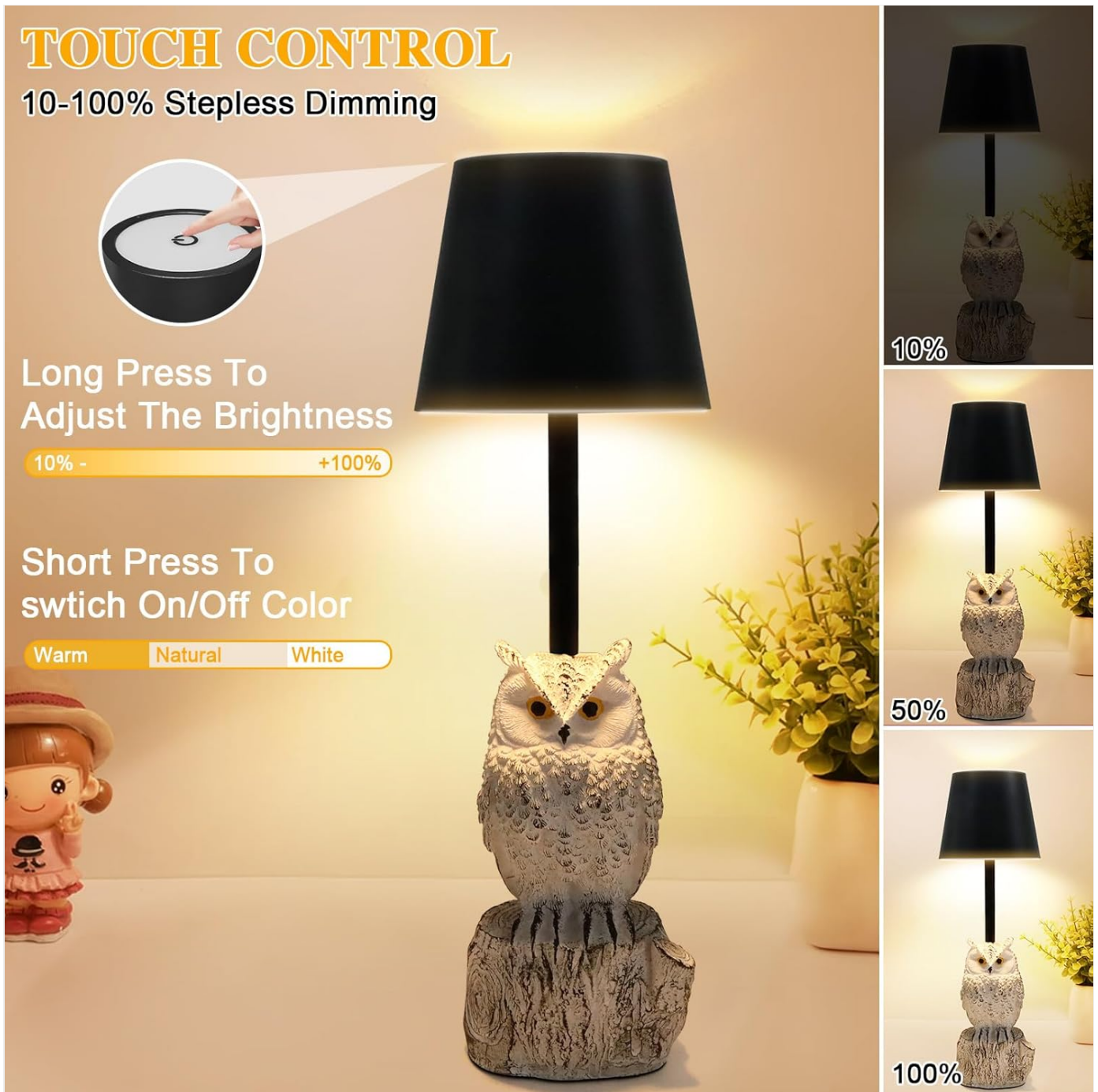
To adjust the brightness of the lamp:

- **Long Press:** While the lamp is on, press and hold the touch control button. The brightness will gradually increase or

decrease between 10% and 100%. Release the button when the desired brightness level is reached.

TOUCH CONTROL

10-100% Stepless Dimming



Long Press To Adjust The Brightness

10% - +100%

Short Press To switch On/Off Color

Warm Natural White

10%

50%

100%

Stepless dimming allows precise brightness control.

MAINTENANCE

Proper care will ensure the longevity and performance of your TYNLED Owl Table Lamp.

- **Cleaning:** Use a soft, dry cloth to wipe the lamp's surface. Do not use abrasive cleaners, solvents, or harsh chemicals, as these may damage the finish.
- **Storage:** If storing the lamp for an extended period, ensure it is fully charged and store it in a cool, dry place away from direct sunlight and extreme temperatures.
- **Battery Care:** To maintain battery health, avoid completely draining the battery frequently. Recharge the lamp regularly, even if not in constant use.

TROUBLESHOOTING

Problem	Possible Cause	Solution
Lamp does not turn on.	Battery is depleted.	Connect the lamp to a power source using the USB-C cable and allow it to charge fully.
Lamp does not respond to touch.	Low battery or temporary malfunction.	Ensure the lamp is charged. Try restarting the lamp by connecting/disconnecting the charging cable.
Brightness adjustment is not working.	Incorrect operation or low battery.	Ensure you are performing a long press on the touch control. Charge the lamp if the battery is low.
Light flickers or is unstable.	Low battery or internal issue.	Charge the lamp fully. If the issue persists, contact customer support.

SPECIFICATIONS

Feature	Detail
Brand	TYNLED
Model Name	Owl lamp
Product Dimensions	12"D x 5"W x 5"H
Item Weight	1 Pounds
Material	Metal, Resin
Light Source Type	LED (56 beads)
Color Temperatures	2500K Warm, 4000K Natural, 6000K White
Dimming	10%-100% Stepless Dimmable
Power Source	Battery Powered (Rechargeable)
Charging Port	USB-C
Battery Life	8-20 hours (depending on brightness)
Switch Type	Touch
Indoor/Outdoor Usage	Indoor

WARRANTY AND SUPPORT

TYNLED is committed to providing high-quality products. For any questions, concerns, or support needs regarding your Owl Table Lamp, please contact TYNLED customer service. While specific warranty details are not provided in this manual, please refer to your purchase documentation or the official TYNLED website for warranty information and support contacts.

You can visit the TYNLED Store for more information: [TYNLED Store on Amazon](#)

