

Manuals+

[Q & A](#) | [Deep Search](#) | [Upload](#)

Manuals.plus /

- › [Gikysuiz](#) /
- › Gikysuiz 2600mAh Replacement Battery for myVacBot SN500 User Manual

Gikysuiz SN500

Gikysuiz 2600mAh Replacement Battery for myVacBot SN500 User Manual

Model: SN500 | Part Number: Li-026418

INTRODUCTION

This manual provides essential information for the safe and effective use of your Gikysuiz 2600mAh Replacement Battery, designed specifically for the myVacBot SN500 robotic vacuum cleaner. Please read this manual thoroughly before installation and use to ensure optimal performance and longevity of your battery.



Image 1: Front view of the Gikysuiz 2600mAh Replacement Battery. This image shows the battery pack with its label clearly visible, indicating the model number Li-026418, capacity 2600mAh, and voltage 14.8V.

SAFETY INFORMATION

Always adhere to the following safety guidelines to prevent damage to the battery, the device, or personal injury:

- Do not disassemble, short-circuit terminals, or dispose of in fire.
- Risk of fire and burns. Charging temperature is 40°F-105°F (approximately 4°C-40°C).
- Keep the battery away from water and excessive heat.
- Do not use the battery if it shows signs of damage, swelling, or leakage.
- Dispose of used batteries according to local regulations.

SETUP AND INSTALLATION

Follow these steps to properly install the replacement battery into your myVacBot SN500:

1. **Power Off Device:** Ensure your myVacBot SN500 is completely powered off and unplugged from its charging base.
2. **Locate Battery Compartment:** Turn the myVacBot SN500 upside down to access the battery compartment. This is typically secured by screws or a latch.
3. **Remove Old Battery:** Carefully remove any screws securing the battery compartment cover. Disconnect the old battery from its connector and lift it out.
4. **Insert New Battery:** Connect the new Gikysuiz replacement battery to the device's battery connector, ensuring the polarity is correct. Gently place the battery into the compartment.
5. **Secure Compartment:** Replace the battery compartment cover and secure it with the screws.
6. **Initial Charge:** For the first use, fully charge the battery to activate it. It is recommended to use the original charger provided with your myVacBot SN500.



Image 2: Angled view of the Gikysuiz 2600mAh Replacement Battery. This perspective highlights the battery's compact form factor and the attached connector cable.

OPERATING INSTRUCTIONS

Once the battery is installed and fully charged, your myVacBot SN500 is ready for operation. The battery is designed to provide extended runtime for your robotic vacuum cleaner.

- **Charging:** Always use the original charger for your myVacBot SN500. The battery features multiple circuit protections against overcharging, high temperature, over current, over-voltage, and short circuits.
- **Battery Activation:** A full charge cycle is recommended upon first installation to activate the battery's full capacity.
- **Performance:** This 2600mAh battery ensures your myVacBot SN500 maintains productivity throughout its cleaning cycles, minimizing downtime.

MAINTENANCE AND STORAGE

Proper maintenance and storage will extend the life of your Gikysuiz replacement battery:

- **Regular Charging:** Avoid completely draining the battery frequently. Recharge it when the device indicates low power.

- **Storage:** If storing the battery for an extended period, ensure it is charged to approximately 50-70% capacity. Store in a cool, dry place away from direct sunlight and extreme temperatures.
- **Cleaning:** Keep the battery terminals clean and free from dust or debris.
- **No Memory Effect:** This Li-ion battery has no memory effect, meaning you can charge it at any time without reducing its overall capacity.



Image 3: Another angled view of the Gikysuiz 2600mAh Replacement Battery, showing the top surface and part of the side.

TROUBLESHOOTING

If you encounter issues with your replacement battery, consider the following:

- **Battery Not Charging:**
 - Ensure the battery is correctly installed and the connector is firmly seated.
 - Verify that the original charger and charging base are functioning correctly.

- Confirm the power outlet is active.

- **Shortened Runtime:**

- Ensure the battery is fully charged before use.
- Check if the myVacBot SN500 itself requires maintenance (e.g., cleaning brushes, filters) which might increase power consumption.
- Environmental factors (e.g., thick carpets) can affect runtime.

- **Battery Overheating:**

- Immediately discontinue use and allow the battery to cool down.
- Ensure the charging environment is within the recommended temperature range (40°F-105°F).
- If overheating persists, contact customer support.

If troubleshooting steps do not resolve the issue, please contact Gikysuiz customer support.

SPECIFICATIONS

Feature	Specification
Model Number	Li-026418
Compatible Model	myVacBot SN500
Voltage	14.8V
Capacity	2600mAh / 38.48Wh
Dimensions (L x W x H)	69.40 x 37.30 x 37.30mm
Weight	190g (approx. 9.2 ounces)
Battery Cell Composition	Lithium Ion
Number of Batteries	1 (included)

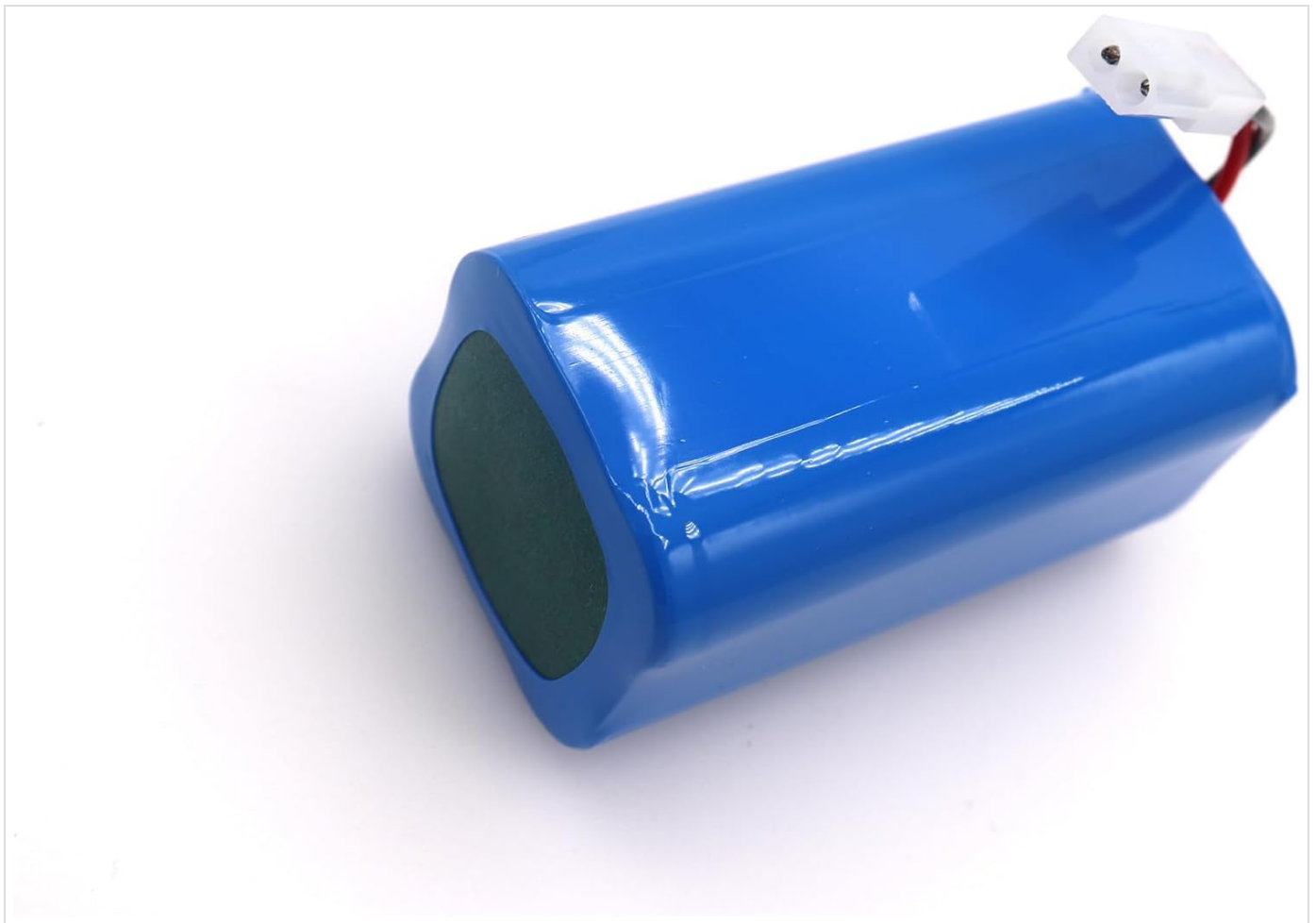


Image 4: Side view of the Gikysuiz 2600mAh Replacement Battery, illustrating its profile.

WARRANTY AND SUPPORT

Gikysuiz provides comprehensive support for your replacement battery:

- **Warranty:** This product comes with a 12-month warranty from the date of purchase.
- **Customer Service:** Your satisfaction is important to us. For any questions, concerns, or professional suggestions regarding your battery, please feel free to contact us.
- **Contact Information:** Email support is available 24/7. Please refer to your purchase documentation or the product listing for specific contact details. We aim to reply within 24 hours.



Image 5: Top view of the Gikysuiz 2600mAh Replacement Battery, showing the overall shape and connector.

© 2024 Gikysuiz. All rights reserved.

This manual is for informational purposes only. Specifications are subject to change without notice.