

## kavey K1-75W

# Kavey 6.5 Cubic Feet Biometric Fireproof Home Safe Box

Model: K1-75W - Instruction Manual

## 1. INTRODUCTION

This manual provides detailed instructions for the installation, operation, and maintenance of your Kavey 6.5 Cubic Feet Biometric Fireproof Home Safe Box, Model K1-75W. Please read this manual thoroughly before using the safe to ensure proper function and security. Keep this manual for future reference.



Image: The Kavey K1-75W safe, illustrating its dual compartments, biometric access, and drop slot feature. The safe is designed for secure storage of various valuables.

## 2. SAFETY INFORMATION

---

- Do not store emergency keys inside the safe. Keep them in a secure, separate location.
- Ensure the safe is securely mounted to a wall or floor to prevent unauthorized removal.
- Replace batteries promptly when the low battery indicator appears to avoid being locked out.
- Keep the safe away from excessive moisture or direct heat sources.
- This safe is designed to deter theft and protect against fire and water damage. It is not impervious to all forms of attack or extreme conditions.

## 3. PACKAGE CONTENTS

---

Verify that all items listed below are included in your package:

- 1 x Kavey 6.5 Cubic Feet Biometric Fireproof Home Safe Box

- 1 x Fireproof Waterproof Bag
- 4 x Emergency Keys
- 6 x Expansion Screws (for mounting)
- 4 x Non-slip Foot Mats
- 1 x Emergency Battery Box
- 1 x User Manual (this document)



Image: A visual representation of the safe's external and internal dimensions, along with an illustration of all included accessories: fireproof bag, foot mats, emergency keys, emergency battery box, expansion screws, and user manual.

## 4. PRODUCT FEATURES AND OVERVIEW

The Kavey K1-75W safe offers advanced security features and convenient storage solutions:

- **Biometric Fingerprint Access:** Quick access in 0.1 seconds with a high-resolution DPI scanner. Stores up to 20 fingerprints.
- **Backlit Touch Screen Keypad:** For passcode entry, visible in low light conditions.
- **Drop Slot:** Allows for easy deposit of cash or documents without opening the main door.



- **Dual Compartment Design:** Two separate sections for organized storage.
- **Metal Storage Box:** Located inside, suitable for smaller items like handguns or ammunition.
- **Dual LED Lights:** Illuminates the interior for visibility in dark environments.
- **5 Solid Locking Bolts:** Enhanced security against forced entry.
- **Full Velvet Lining:** Protects valuables from scratches and damage.
- **Adjustable and Removable Shelf:** For versatile interior organization.
- **Dual Alarm System:** Activates upon incorrect entries or violent vibration.
- **Mute Function:** Allows for silent operation when needed.
- **Robust Construction:** Made from low-carbon alloy steel with a 60mm thick reinforced steel door panel and micro-gap cutting design for anti-prying protection.



Image: Close-up view highlighting the internal features of the safe, such as the drop slot, integrated metal storage box, LED lighting, robust locking bolts, and the protective velvet lining.



Image: An exploded view demonstrating the sturdy, multi-layered material construction of the safe, designed for enhanced protection.

## 5. SETUP

---

### 5.1 Unpacking

Carefully remove the safe from its packaging. Inspect for any damage. Retain packaging materials for potential future transport or returns.

### 5.2 Battery Installation

The safe requires 8 AAA alkaline batteries (not included). Locate the battery compartment, typically on the inside of the safe door. Insert the batteries, ensuring correct polarity. Close the compartment cover.

### 5.3 Initial Opening (Using Emergency Key)

Upon first use, or if batteries are depleted, you will need to use an emergency key:

1. Locate the emergency keyhole cover on the keypad panel.
2. Gently remove the cover.
3. Insert an emergency key and turn it clockwise.
4. While the key is turned, rotate the knob on the keypad panel clockwise to open the safe door.

## 6. OPERATING INSTRUCTIONS

---

### 6.1 Setting Up Fingerprints

The safe can store up to 20 unique fingerprints.

1. Open the safe door.
2. Locate the reset button (usually on the inside of the door, near the hinge). Press it.
3. Place your finger on the fingerprint scanner. The indicator light will flash.
4. Lift and place your finger repeatedly (typically 5-8 times) until the indicator light confirms successful registration (e.g., a green light or beep).



5. Repeat for additional fingerprints.



Image: A detailed graphic of the FPC fingerprint reader, highlighting its features such as 0.1-second quick access, over 650 DPI high resolution, and the ability to store up to 20 fingerprints for multiple users.

## 6.2 Setting Up Passcode

1. Open the safe door.
2. Press the reset button.
3. Enter your desired 3-8 digit passcode on the keypad.
4. Press the '#' key to confirm. The indicator light will confirm successful registration.

## 6.3 Opening the Safe

There are four primary methods to open the safe:

- **Fingerprint + Knob:** Place registered finger on scanner, then rotate knob clockwise.
- **Code + Knob:** Enter registered passcode, press '#', then rotate knob clockwise.
- **Emergency Key + Knob:** Insert emergency key, turn clockwise, then rotate knob clockwise.
- **Emergency Battery Box + Code/Fingerprint + Knob:** If internal batteries are dead, connect the emergency battery box to the external power jack, then use fingerprint or code, and rotate the knob.

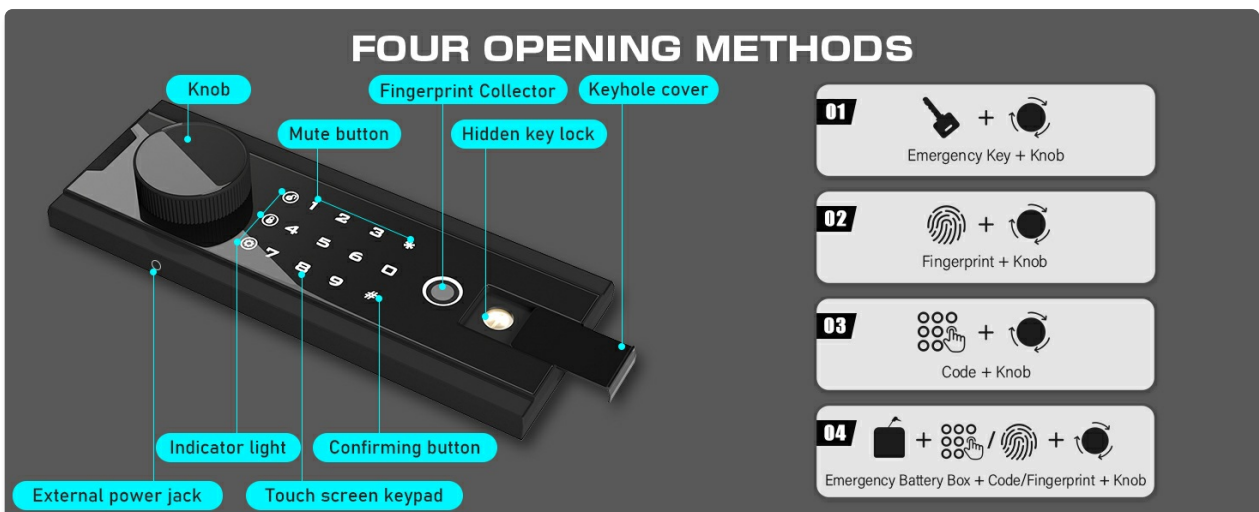


Image: An illustration detailing the four different methods available for opening the safe, including the use of emergency keys, fingerprint recognition, passcodes, and the emergency battery box.

## 6.4 Using the Drop Slot

The top compartment features a drop slot for depositing items without fully opening the safe. Simply insert cash, envelopes, or small documents into the slot. The items will fall into the secure compartment below.



Image: A visual guide to using the quick access drop slot, illustrating how to deposit items like cash without needing to unlock and open the main safe door.

## 6.5 Dual Alarm System and Mute Function

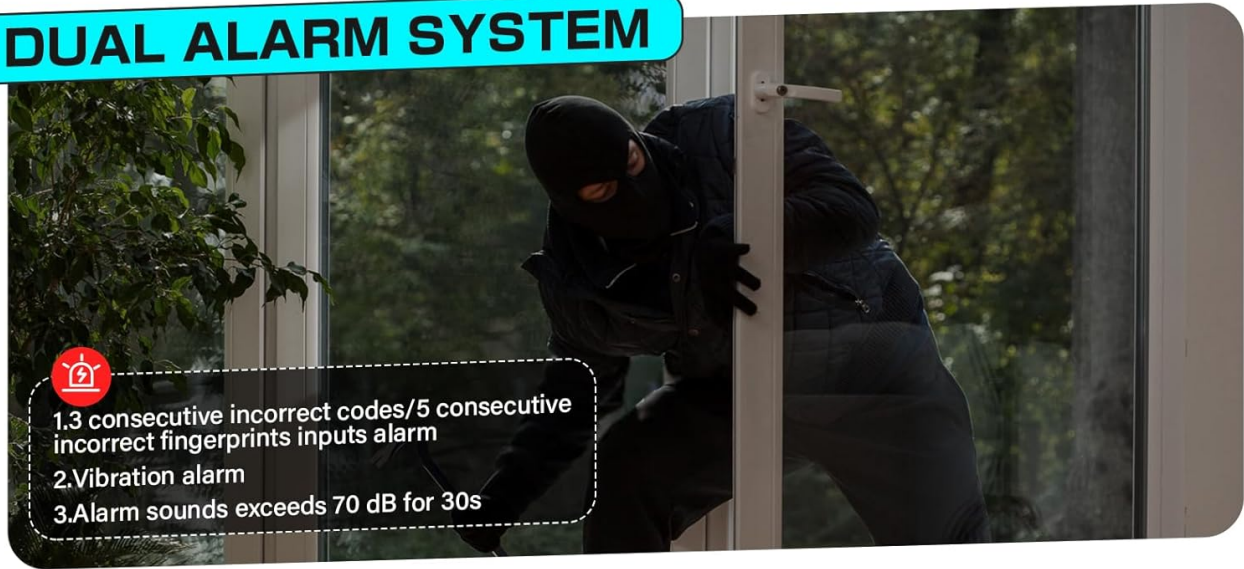
The safe is equipped with a dual alarm system:

- **Incorrect Entry Alarm:** Activates after 3 consecutive incorrect passcode inputs or 5 consecutive incorrect fingerprint attempts.
- **Vibration Alarm:** Activates if the safe experiences violent vibration or tampering.

The alarm sounds exceed 70 decibels and will last for 30 seconds.

To activate or deactivate the mute function, press the '\*\*' key, then press '1'. This allows for silent operation of the keypad and alarm system.

## DUAL ALARM SYSTEM



## MUTE FUNCTION

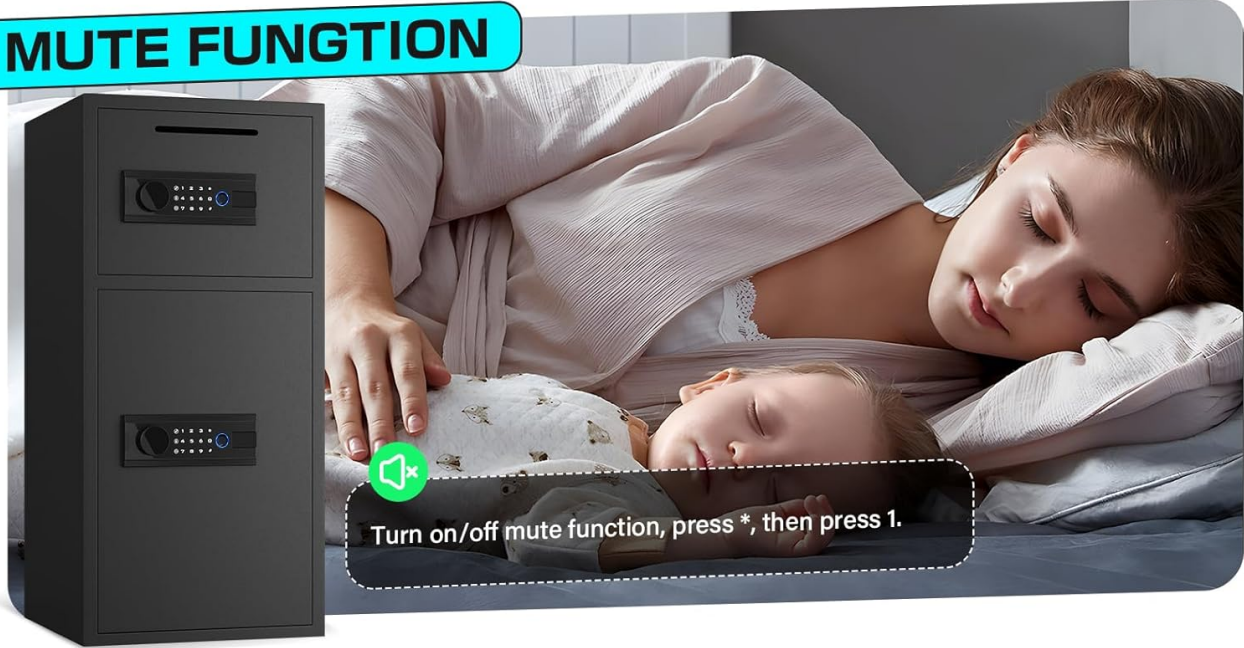


Image: A split image showing the dual alarm system being triggered by a potential intruder, and the mute function allowing for quiet operation, suitable for environments where noise is a concern.

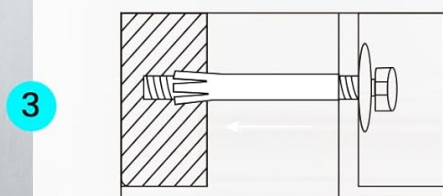
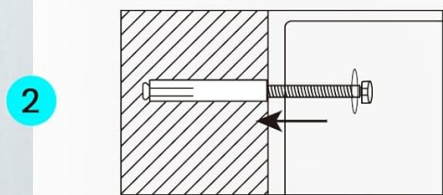
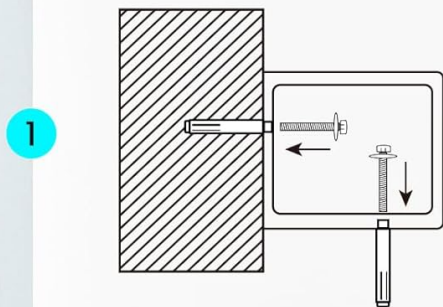
## 7. MOUNTING INSTRUCTIONS

For enhanced security, it is recommended to mount the safe to a floor or wall using the provided expansion screws. This prevents unauthorized removal of the safe.

1. Choose a suitable location for mounting. Ensure the surface is solid and can support the weight of the safe.
2. Open the safe door and locate the pre-drilled mounting holes on the back or bottom panel.
3. Position the safe and mark the drilling points on the wall or floor through the mounting holes.
4. Drill pilot holes at the marked locations using an appropriate drill bit.
5. Align the safe with the drilled holes and insert the expansion screws.
6. Tighten the screws securely to fasten the safe in place.



Ensures thieves cannot easily remove the safe from your home or office.



## WALL/FLOOR MOUNTING

Mounting hardware included



Image: A step-by-step diagram illustrating the process of securely mounting the safe to a wall or floor using the provided expansion screws, enhancing its anti-theft capabilities.

## 8. MAINTENANCE

- **Battery Replacement:** Replace all 8 AAA batteries when the low battery indicator appears. Use only new alkaline batteries.
- **Cleaning:** Wipe the safe's exterior with a soft, damp cloth. Avoid abrasive cleaners or solvents.
- **Keypad Care:** Keep the keypad and fingerprint scanner clean and dry for optimal performance.
- **Interior:** Periodically check the interior for moisture and ensure the velvet lining is intact.

## 9. TROUBLESHOOTING

Problem	Possible Cause	Solution
---------	----------------	----------

Problem	Possible Cause	Solution
Safe does not open with fingerprint/code.	Low batteries, incorrect fingerprint/code, scanner/keypad issue.	Replace batteries. Re-enter code carefully. Re-register fingerprint. Use emergency key.
Alarm activates unexpectedly.	Incorrect entries, physical impact/vibration.	Ensure correct access methods. Avoid bumping the safe. Use mute function if desired.
Keypad is unresponsive.	Dead batteries, temporary malfunction.	Replace batteries. Use emergency battery box. If issue persists, contact customer service.
Emergency key does not work.	Incorrect key, obstruction in keyhole.	Ensure you are using the correct emergency key. Check for debris in the keyhole.

## 10. SPECIFICATIONS

- **Brand:** Kavey
- **Model Number:** K1-75W
- **External Dimensions:** 13.77"D x 13.77"W x 29.52"H (35cm D x 35cm W x 75cm H)
- **Capacity:** 6.5 Cubic Feet
- **Lock Type:** Biometric (Fingerprint) and Digital Keypad
- **Material:** Low Carbon Steel
- **Item Weight:** 47.1 Pounds (21.36 kg)
- **Mounting Type:** Floor Mount, Wall Mount
- **Special Features:** Anti-Theft, Biometric Fingerprint, Drop Slot, Dual Alarm System, Mute Function, Fireproof, Waterproof
- **Batteries Required:** 8 x AAA (not included)

## 11. WARRANTY AND SUPPORT

Kavey provides the following support for your product:

- **90-Day Unconditional Return Policy:** Refer to your purchase agreement for details.
- **24/7 Online Customer Service:** For assistance with any issues or questions.
- **Key Service:** Support for lost or replacement keys.

For customer service inquiries, please refer to the contact information provided at the point of purchase or on the official Kavey website.