

Manuals+

[Q & A](#) | [Deep Search](#) | [Upload](#)

Manuals.plus /

› [Innsky /](#)

› Innsky Airfryer AFT06009 Instruction Manual

Innsky AFT06009

Innsky Airfryer AFT06009 Instruction Manual

Model: AFT06009 | Capacity: 6 Liters | Power: 1500W

1. INTRODUCTION

Thank you for choosing the Innsky Airfryer AFT06009. This appliance is designed to provide a healthier way to cook your favorite meals, using hot air circulation to achieve crispy results with significantly less oil. Please read this manual thoroughly before first use to ensure safe and optimal operation.



Figure 1: Front view of the Innsky Airfryer AFT06009, showcasing its sleek design, LED touch screen, and central control dial.

2. IMPORTANT SAFETY INSTRUCTIONS

When using electrical appliances, basic safety precautions should always be followed to reduce the risk of fire, electric shock, and injury to persons, including the following:

- Read all instructions before using the appliance.
- Do not touch hot surfaces. Use handles or knobs.
- To protect against electric shock, do not immerse cord, plugs, or the appliance in water or other liquid.
- Close supervision is necessary when any appliance is used by or near children.
- Unplug from outlet when not in use and before cleaning. Allow to cool before putting on or taking off parts.
- Do not operate any appliance with a damaged cord or plug or after the appliance malfunctions or has

been damaged in any manner.

- The use of accessory attachments not recommended by the appliance manufacturer may cause injuries.
- Do not use outdoors.
- Do not let cord hang over edge of table or counter, or touch hot surfaces.
- Do not place on or near a hot gas or electric burner, or in a heated oven.
- Extreme caution must be used when moving an appliance containing hot oil or other hot liquids.
- Always attach plug to appliance first, then plug cord into the wall outlet. To disconnect, turn any control to "off", then remove plug from wall outlet.
- Do not use appliance for other than intended use.
- Ensure the appliance is placed on a stable, heat-resistant surface, away from walls or other appliances to allow for proper air circulation.

3. PRODUCT COMPONENTS

Familiarize yourself with the main parts of your Innsky Airfryer:

- **Main Unit:** Houses the heating element and fan.
- **Control Panel:** LED touch screen with preset icons and a central control dial for temperature and time adjustment.
- **Frying Basket:** Non-stick, removable basket for holding food.
- **Crisper Plate:** Removable plate inserted into the basket to allow air circulation around food.
- **Handle:** Ergonomic handle for safely pulling out the frying basket.

Cualquiera puede cocinar como un profesional



Tecnología
Flavor-Lock



Circulación de
aire de 360°



Calentamiento
rápido con
1500 W



Figure 2: Internal view illustrating the 360° hot air circulation technology for even cooking.

4. SETUP AND FIRST USE

4.1 Unpacking

1. Remove all packaging materials, stickers, and labels from the appliance.
2. Remove the frying basket and crisper plate from the main unit.

4.2 Initial Cleaning

1. Wash the frying basket and crisper plate with hot water, a mild dishwashing liquid, and a non-abrasive sponge.
2. Wipe the inside and outside of the appliance with a damp cloth.

3. Ensure all parts are completely dry before use.

4.3 Placement

1. Place the air fryer on a stable, horizontal, and heat-resistant surface.
2. Ensure there is at least 10 cm (4 inches) of free space on the back and sides, and 10 cm (4 inches) above the appliance to allow for proper air circulation.
3. Do not place the appliance against a wall or other appliances.



Figure 3: Recommended placement and dimensions for the Innsky Airfryer AFT06009.

5. OPERATING INSTRUCTIONS

5.1 Powering On/Off

1. Plug the power cord into a grounded wall outlet. The display will illuminate briefly.
2. Press the power icon (U) on the control panel to turn the air fryer on.
3. To turn off, press and hold the power icon until the display turns off.

5.2 Temperature and Time Adjustment

1. After powering on, the default temperature and time will be displayed.
2. Rotate the central control dial to adjust the temperature. Press the dial to switch to time adjustment, then rotate to set the cooking time.
3. Once desired settings are selected, press the start/pause icon (▶||) to begin cooking.



Figure 4: Adjusting settings using the central control dial.

5.3 Using Preset Functions

The Innsky Airfryer features 7 preset cooking functions for common dishes:

- Fries
- Meat
- Seafood
- Fish
- Pizza
- Bake
- Chicken Drumsticks

1. After powering on, select the desired preset icon on the touch screen.
2. The air fryer will automatically set the optimal temperature and time for that preset.
3. You can manually adjust the temperature and time even after selecting a preset if needed.
4. Press the start/pause icon to begin cooking.

Comida rápida y fácil para la familia

7 preajustes con preparación a la carta para inicio rápido



Figure 5: The control panel with 7 quick-start preset options.

5.4 Shake Reminder

For certain foods, the air fryer will emit a reminder to shake the basket during cooking to ensure even crisping. When the 'SHAKE' icon appears and the appliance beeps, carefully pull out the basket, shake the contents, and reinsert the basket to resume cooking.



Speisen sind in wenigen Minuten gar

- Gesunde Ernährung ●
- Einfache Mahlzeiten in einem Rutsch ●
- Extra knuspriges Aussehen ●

Figure 6: The shake reminder feature helps achieve uniformly crispy results.

5.5 Cooking Guide (Examples)

The following table provides general guidelines for various food items. Cooking times and temperatures may vary based on food quantity, size, and desired crispiness.



Figure 7: Example cooking settings for fries, baked items, and fish.



Figure 8: Example cooking settings for vegetables and meat.

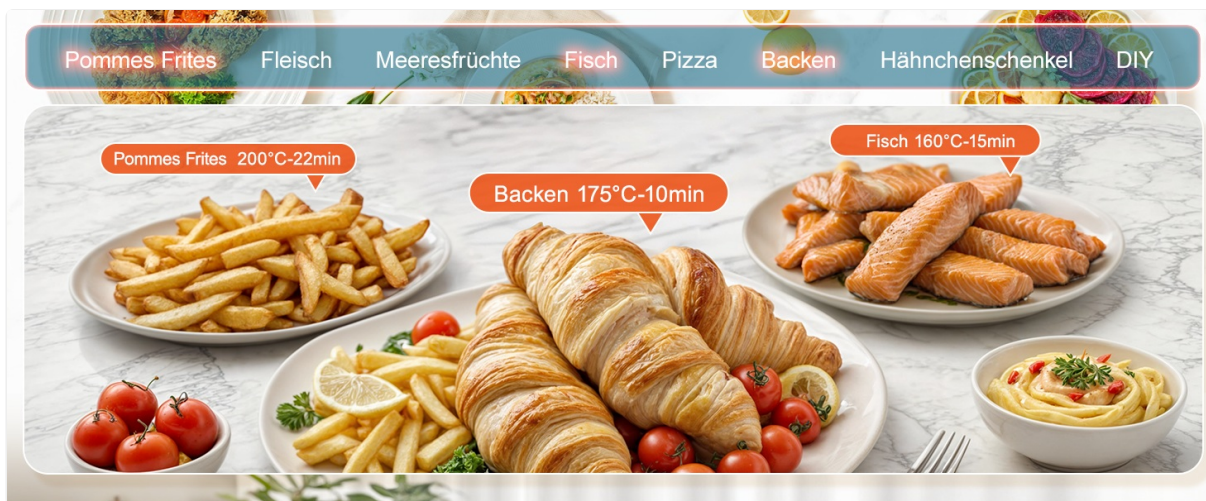


Figure 9: Example cooking settings for burgers and seafood.

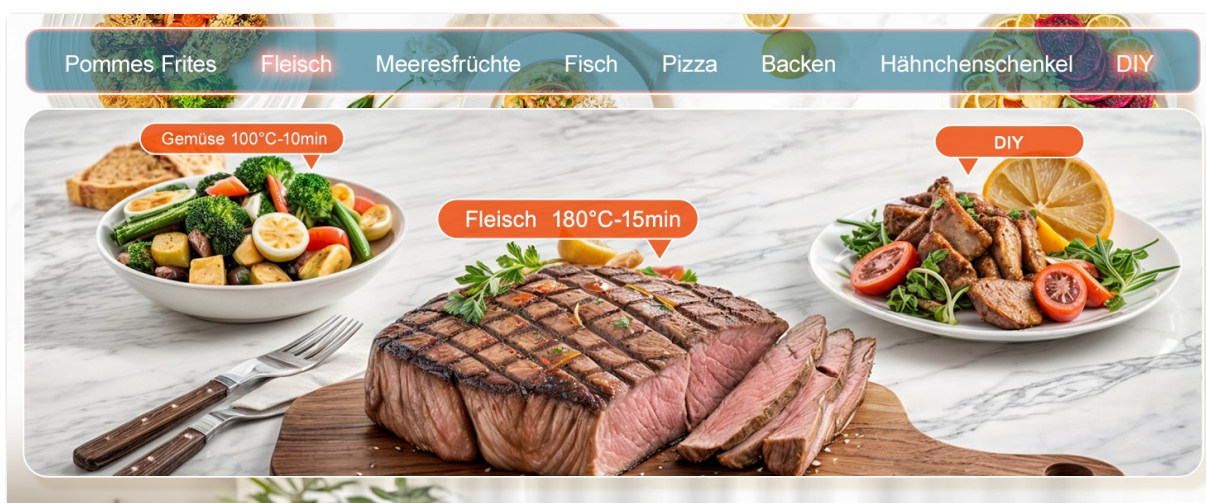


Figure 10: Example cooking settings for pizza and chicken.

6. CLEANING AND MAINTENANCE

Regular cleaning of your air fryer will ensure optimal performance and extend its lifespan.

6.1 Before Cleaning

1. Unplug the air fryer from the power outlet and allow it to cool down completely before cleaning.

6.2 Cleaning the Basket and Crisper Plate

The non-stick frying basket and crisper plate are dishwasher safe, making cleaning effortless.

1. Remove the frying basket and crisper plate.
2. Wash them in the dishwasher or by hand with hot water, a mild dishwashing liquid, and a non-abrasive sponge.
3. For stubborn food residue, soak the basket and plate in hot water with dish soap for about 10 minutes before cleaning.



Figure 11: The frying basket and crisper plate are dishwasher safe for easy cleaning.

6.3 Cleaning the Main Unit

1. Wipe the exterior of the air fryer with a damp cloth. Do not use abrasive cleaners or scouring pads.
2. Clean the interior of the appliance with a non-abrasive sponge and warm water.
3. Clean the heating element with a cleaning brush to remove any food residue.
4. Ensure all parts are completely dry before storing or using again.

6.4 Storage

Store the air fryer in a cool, dry place when not in use. Ensure it is clean and dry before storage.

7. TROUBLESHOOTING

If you encounter any issues with your Innsky Airfryer, please refer to the following common problems and solutions:

Problem	Possible Cause	Solution
Air fryer does not turn on.	Appliance not plugged in.	Ensure the power cord is securely plugged into a grounded outlet.
Food is not cooked evenly.	Basket is overloaded; food not shaken.	Do not overload the basket. Shake the basket halfway through cooking.
White smoke coming from the appliance.	Grease residue from previous use; fatty ingredients.	Clean the basket and crisper plate thoroughly after each use. For fatty foods, absorb excess oil before cooking.
Food is not crispy.	Not enough oil (for some foods); temperature too low; cooking time too short.	Lightly brush or spray food with oil. Increase temperature or cooking time.

If the problem persists, please contact customer support.

8. SPECIFICATIONS

Feature	Specification
---------	---------------

Feature	Specification
Brand	Innsky
Model Number	AFT06009
Color	Grey
Capacity	6 Liters
Power	1500 Watts
Voltage	230 Volts (AC)
Material	Plastic
Product Dimensions (L x W x H)	31.8 x 29.5 x 26 cm
Item Weight	6 Kilograms
Automatic Shut-off Function	Yes
Temperature Control	Yes
Dishwasher Safe Parts	Basket and Crisper Plate

9. WARRANTY AND SUPPORT

Innsky products are designed for reliability and performance. While specific warranty details are not provided in this manual, most Innsky products come with a standard manufacturer's warranty covering defects in materials and workmanship.

For warranty claims, technical support, or any questions regarding your Innsky Airfryer AFT06009, please contact Innsky customer service through their official website or the retailer where the product was purchased.

Please have your model number (AFT06009) and proof of purchase ready when contacting support.