



[Manuals.plus](#) /

> [Jaxilyn](#) /

> Jaxilyn Metal Roof Panels Instruction Manual

Jaxilyn RoofpanelBlack20pcs

Jaxilyn Metal Roof Panels Instruction Manual

Model: RoofpanelBlack20pcs

PRODUCT OVERVIEW

The Jaxilyn Metal Roof Panels are designed for versatile outdoor protection, suitable for various structures such as temporary garages, decks, patios, carports, sheds, stables, and mobile homes. Made from high-quality galvanized steel, these corrugated panels offer durability, weather resistance, and corrosion protection. Their design includes longitudinal grooves for effective waterproofing, ensuring optimal protection against rain and other elements.



Image: A bundle of 20 black corrugated metal roof panels, highlighting the quantity and included screws.

SPECIFICATIONS

Feature	Detail
---------	--------

Material	Galvanized Steel
Color	Black
Dimensions (per panel)	42.52" L x 16.77" W
Thickness	0.01 inch
Quantity	20 pieces
Total Coverage Area	99 square feet
Included Components	200 screws

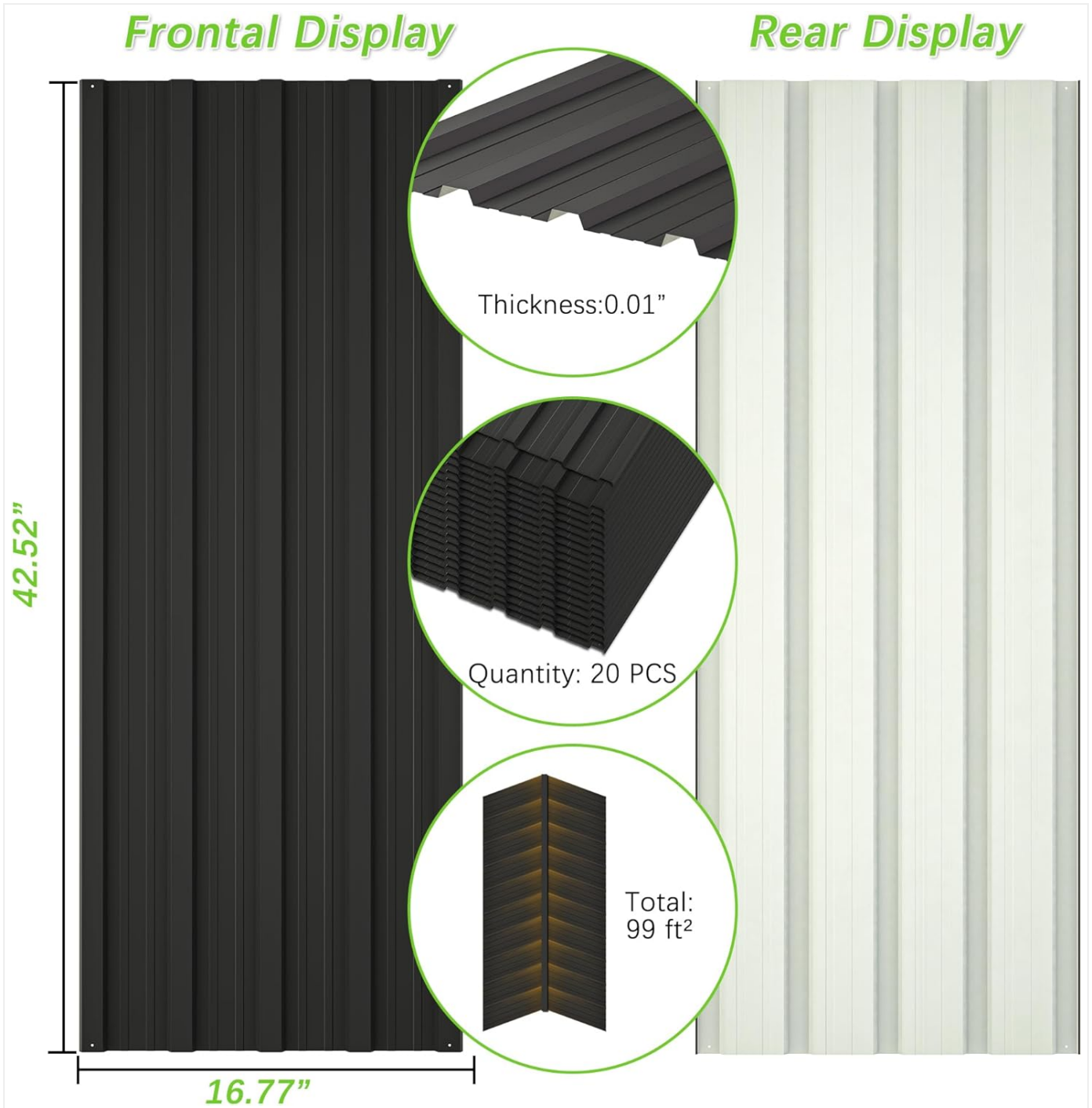


Image: Detailed view of panel dimensions and specifications.

PACKAGE CONTENTS

- 20 x Metal Roof Panels (42.52" L x 16.77" W each)
- 200 x Screws for installation

INSTALLATION GUIDE

These metal roof panels are designed for easy installation. Follow these steps for a secure and effective setup:

1. **Measure the Installation Area:** Accurately measure the dimensions of the area where the panels will be installed to ensure proper fit and coverage.
2. **Prepare the Surface:** Ensure the underlying structure is clean, level, and capable of supporting the panels.
3. **Place the First Panel:** Position the first panel on the designated area. The panels feature pre-drilled holes for convenience.
4. **Secure with Screws:** Use the provided screws to fix the panel securely to the structure. Ensure screws are tightened adequately but do not overtighten.
5. **Splice and Overlap:** For subsequent panels, overlap the corrugated edges to create a watertight seal. The grooves are designed to interlock.
6. **Continue Installation:** Repeat the process, placing and securing each panel, ensuring proper alignment and overlap until the entire area is covered.
7. **Final Inspection:** After all panels are installed, perform a final check to ensure all screws are secure and there are no gaps or loose panels.

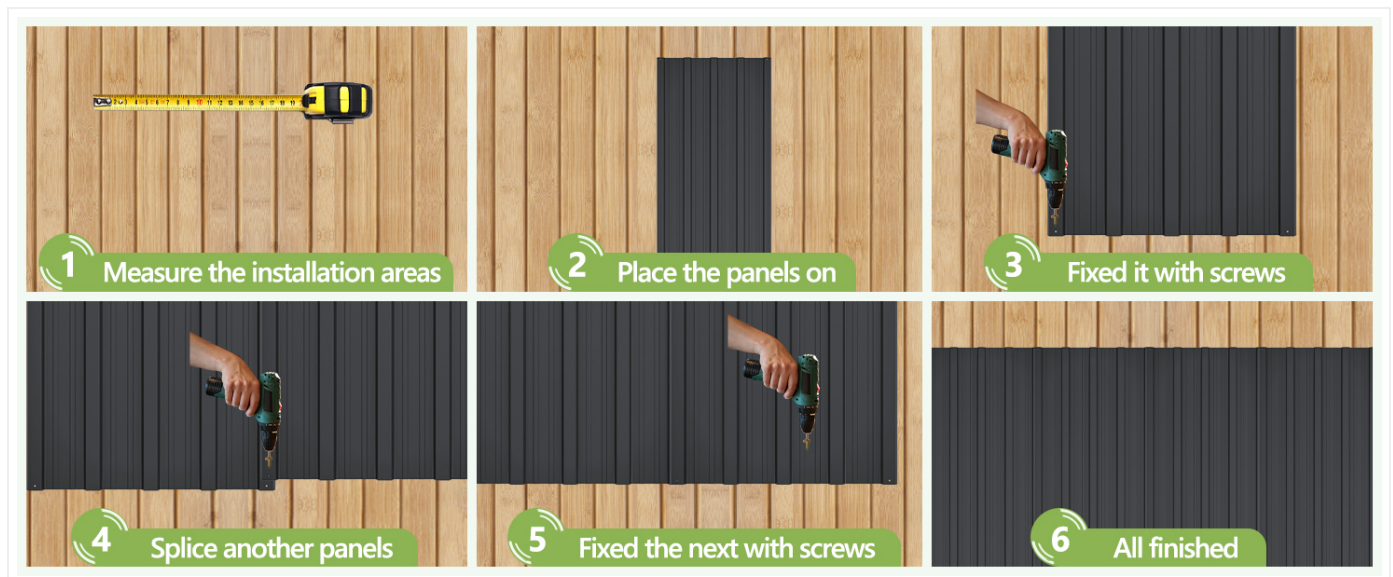


Image: Visual guide demonstrating the step-by-step installation process.

USAGE AND APPLICATIONS

These corrugated metal panels are highly versatile and can be used for a wide range of outdoor applications due to their durable and weather-resistant properties.

- **Roofing:** Ideal for roofs of gazebos, sheds, stables, temporary garages, carports, and mobile homes.
- **Wall Cladding:** Can be used as protective wall coverings for various structures.
- **Fencing:** Suitable for creating durable and secure fences.
- **Animal Enclosures:** Excellent for coops and dog cages, providing shelter and protection.

- **Decorative Purposes:** Can be incorporated into bar counters or wall decorations for an industrial aesthetic.



Image: Examples of diverse applications for the metal panels.

MAINTENANCE

To ensure the longevity and performance of your metal roof panels, follow these simple maintenance guidelines:

- **Regular Cleaning:** Periodically clean the panels with water and a mild detergent to remove dirt, debris, and any accumulated grime. Rinse thoroughly.
- **Inspect for Damage:** Annually inspect the panels for any signs of damage, such as dents, scratches, or loose screws. Address any issues promptly to prevent further deterioration.
- **Clear Debris:** Ensure that leaves, branches, and other debris do not accumulate on the panels, as this can trap moisture and lead to corrosion over time.
- **Check Fasteners:** Verify that all screws and fasteners remain tight and secure. Re-tighten if necessary.

TROUBLESHOOTING

Issue	Possible Cause	Solution
Screws do not match panel color	Included screws may have a different finish than the black panels.	Consider painting the screw heads to match the panel color or purchasing screws with a matching finish.
Difficulty removing protective plastic film	Panels are shipped with a thin protective plastic film that can be tedious to remove.	Allocate sufficient time for film removal. Peeling slowly from a corner may help.
Panels seem thin	The panels are designed to be lightweight for easy installation.	Ensure proper underlying support structure is in place to provide adequate stability, especially in areas with high winds.

WARRANTY AND SUPPORT

For any questions, concerns, or support regarding your Jaxilyn Metal Roof Panels, please refer to the seller's contact information provided at the point of purchase. The product is generally covered by a standard return policy, typically 30 days, for refund or replacement as per retailer terms.

For more information about Jaxilyn products, you can visit the official Jaxilyn store on Amazon:[Jaxilyn Store](#).



© 2025 Jaxilyn. All rights reserved.