

## GOWENIC GOWENIC8cf61vez2s-12

# GOWENIC 50MP 1080P HD Digital Camera Instruction Manual

Model: GOWENIC8cf61vez2s-12

## INTRODUCTION

---

Thank you for choosing the GOWENIC 50MP 1080P HD Digital Camera. This manual provides detailed instructions for the proper setup, operation, and maintenance of your camera. Please read this manual thoroughly before using the camera to ensure optimal performance and longevity.

## PACKAGE CONTENTS

---

Verify that all items are present in your package:

- GOWENIC 50MP 1080P HD Digital Camera
- USB Charging Cable
- Drawstring Storage Pouch
- User Manual (this document)



Image: The GOWENIC Digital Camera, its USB charging cable, and a grey drawstring storage pouch.

## CAMERA OVERVIEW

---

Familiarize yourself with the camera's components and controls.

### Front View



Image: Front view of the camera highlighting the 50.0 Megapixel lens.

- **Lens:** Captures images and videos.
- **Fill Light:** Provides additional illumination in low-light conditions.

## Rear View and Controls





Image: Rear view of the camera displaying the 2.2-inch screen and control buttons.

- **2.2-inch LCD Screen:** For viewing live feed, photos, and videos.
- **W/T Buttons:** Control digital zoom (Wide/Telephoto).
- **OK Button:** Confirm selections and take photos/start recording.
- **Directional Buttons:** Navigate menus and settings.
- **M Button:** Access menu settings.
- **DISP Button:** Change display information.

## SETUP

---

### 1. Battery Installation and Charging

The camera is powered by a built-in 600mAh lithium battery. Ensure the camera is fully charged before first use.

1. Locate the USB charging port on the camera.
2. Connect the provided USB cable to the camera's port and the other end to a USB power adapter (not included) or a computer's USB port.

3. The charging indicator will illuminate. Charging is complete when the indicator turns off or changes color (refer to camera screen for battery status).

600mAh Battery  
Lasts up to 300 minutes



Image: The camera's 600mAh battery provides up to 300 minutes of operation.

## 2. Memory Card Installation

A memory card (not included) is required to store photos and videos. The camera supports small memory cards up to 128GB.

1. Locate the memory card slot on the side or bottom of the camera.
2. Insert the memory card with the metal contacts facing the correct direction (usually downwards or towards the front of the camera) until it clicks into place.
3. To remove, gently press the card inward until it springs out.

## 3. Initial Power On

Press and hold the power button (usually located on the top or side) for a few seconds until the screen illuminates.

## OPERATING THE CAMERA

## 1. Power On/Off

- **To Power On:** Press and hold the power button.
- **To Power Off:** Press and hold the power button again until the screen turns off.

## 2. Taking Photos

The camera features a 50MP image sensor for high-quality photos.

1. Ensure the camera is in photo mode (indicated on the screen).
2. Frame your shot using the 2.2-inch LCD screen.
3. **Autofocus:** Press the shutter button (often the OK button) halfway down to allow the camera to focus. A green box will typically appear on the screen when focus is achieved.
4. **Zoom:** Use the **W** (Wide) and **T** (Telephoto) buttons to adjust the 16X digital zoom.
5. **Fill Light:** Activate the built-in fill light in dark environments via the menu or a dedicated button (refer to camera controls).
6. Press the shutter button fully to capture the photo.

### Autofocus

Pressing the shutter button halfway to focus and pressing the shutter again for vivid, clear images makes photography simple and easy.

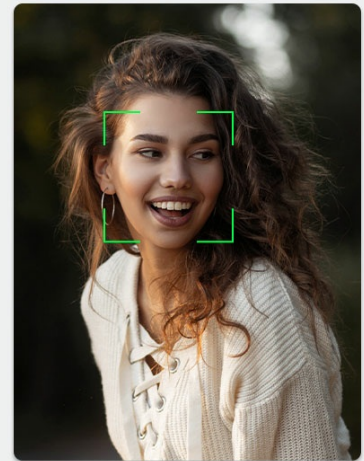
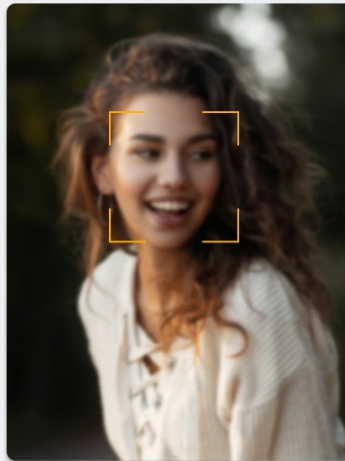


Image: The autofocus function ensures clear and vivid images by pressing the shutter button halfway.



Image: The 16X digital zoom allows you to capture distant subjects with clarity.

## 3. Recording Videos



The camera supports 1080P HD video recording.

1. Switch the camera to video recording mode.
2. Press the shutter button (OK button) to start recording. A red indicator or timer will appear on the screen.
3. Press the shutter button again to stop recording.

## 4. Playback Mode

View your captured photos and videos directly on the camera screen.

1. Enter playback mode (usually via a dedicated button or menu option).
2. Use the directional buttons to navigate through your media files.
3. Press the OK button to view a photo or play a video.

## 5. Special Functions

The camera includes several advanced features:

- **Selfie Mode:** Allows for self-portraits with a timer.
- **Continuous Taking (Burst Mode):** Captures multiple photos in quick succession.
- **Anti-Shake Function:** Helps to reduce blur caused by camera movement.
- **Slow Motion Function:** Records video at a higher frame rate for slow-motion playback.
- **Delayed Video:** Sets a delay before video recording begins.

### Anti-Shake

Help to reduce your hand shake, takes stabler and clearer photos

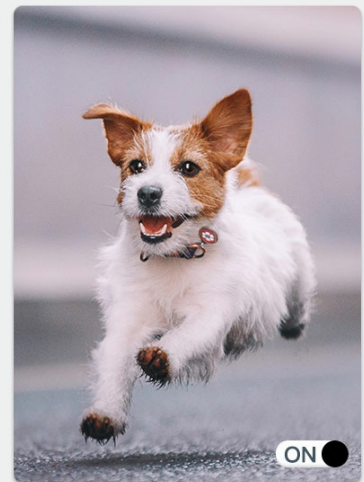


Image: The anti-shake function helps produce clearer photos by minimizing blur from hand movement.

### Burst Mode

Featuring a burst mode, it's perfect for capturing life's adventures, turning every moment into a potential masterpiece.



Image: Burst mode captures a series of photos rapidly, ideal for action shots.



Slow Motion Photography



Timing/Continuous Photography



Time Lapse Photography

Image: Examples of various photography modes including slow motion, continuous, and time lapse.

## 6. Menu Navigation

Press the **M** button to access the camera's menu. Use the directional buttons to scroll through options and the **OK** button to select. Press **M** again to exit the menu.

## TRANSFERRING FILES

---

You can transfer photos and videos from your camera to a computer using the provided USB cable.

1. Ensure the camera is powered on.
2. Connect the camera to your computer using the USB cable.
3. The camera should appear as a removable disk or device on your computer.
4. Open the camera's folder to access and copy your files.
5. Safely eject the camera from your computer before disconnecting the USB cable.



# MAINTENANCE

## 1. Cleaning

- Use a soft, dry cloth to clean the camera body.
- For the lens and screen, use a specialized lens cleaning cloth and solution to avoid scratches.
- Do not use harsh chemicals or abrasive materials.

## 2. Storage

- Store the camera in a cool, dry place away from direct sunlight and extreme temperatures.
- Use the provided drawstring pouch to protect the camera from dust and scratches.
- Remove the memory card if storing for extended periods.

## 3. Battery Care

- Avoid fully discharging the battery frequently.
- Charge the battery regularly, even if the camera is not in use, to maintain battery health.
- Do not expose the battery to high temperatures.

# TROUBLESHOOTING

| Problem                             | Possible Cause  | Solution  |
|-------------------------------------|---|---|
| Camera does not power on.           | Low battery; faulty battery; power button issue.      | Charge the battery fully. Ensure the power button is pressed correctly.   |
| Cannot take photos/record videos.   | No memory card; memory card full; memory card error.  | Insert a memory card. Delete unnecessary files or replace the card. Format the card (this will erase all data). |
| Images are blurry.                  | No autofocus; camera shake; dirty lens.               | Ensure autofocus engages (press shutter halfway). Use anti-shake function. Clean the lens.                      |
| Computer does not recognize camera. | Faulty USB cable; incorrect connection; driver issue. | Try a different USB port or cable. Ensure camera is powered on and in the correct mode for data transfer.       |

# SPECIFICATIONS

| Feature          | Detail   |
|------------------|--|
| Image Resolution | Up to 50 Megapixels                                  |
| Video Resolution | 1080P HD   |
| Display Screen   | 2.2 inches   |
| Zoom             | 16X Digital Zoom                                     |
| Autofocus        | Yes  |
| Battery          | 600mAh Lithium Battery (up to 300 minutes operation) |

| Feature      | Detail  |
|--------------|---|
| Storage      | Supports small memory card up to 128GB (not included) |
| Dimensions   | 4.33 x 3.54 x 2.76 inches (Package)                   |
| Weight       | 9 ounces  |
| Model Number | GOWENIC8cf61vez2s-12                                  |
| Manufacturer | GOWENIC   |

## WARRANTY AND SUPPORT

---

For warranty information and technical support, please refer to the documentation provided with your purchase or contact GOWENIC customer service. Keep your purchase receipt as proof of purchase for warranty claims.