

AECOJOY 16413BK

AECOJOY 14' x 12' Wall-Mounted Hardtop Gazebo Instruction Manual

Model: 16413BK

1. PRODUCT OVERVIEW

This manual provides detailed instructions for the assembly, operation, and maintenance of your AECOJOY 14' x 12' Wall-Mounted Hardtop Gazebo. This gazebo is designed to provide a sheltered outdoor space, featuring a durable metal and aluminum frame with sun panels for protection.



Image: The AECOJOY 14' x 12' Wall-Mounted Hardtop Gazebo providing shade over a patio seating area.

2. SAFETY INFORMATION

- **Anchoring:** Always properly anchor the gazebo to the ground and securely attach it to a wall as instructed. This is crucial for stability, especially in windy conditions.
- **Snow Load:** Regularly clear snow off the roof to prevent excessive weight accumulation, which can cause structural damage. The roof is designed to withstand approximately 7 inches of heavy snow.
- **Wind Resistance:** Once securely fixed and stabilized, the gazebo can withstand winds of approximately 70 mph. However, in extreme weather conditions, additional precautions may be necessary.
- **UV Protection:** The sun panels provide UPF 50++ protection against harmful UV rays.
- **Assembly:** It is recommended to have at least two people for assembly to ensure safety and ease of installation.

3. PACKAGE CONTENTS

Your AECOJOY Gazebo is shipped in multiple packages. Please ensure all packages have arrived before beginning assembly. A detailed list of all components and hardware is included in the packaging. Verify all

parts against the provided list before starting installation.

4. SETUP AND INSTALLATION

The assembly process is designed to be straightforward with detailed instructions and video tutorials available. Please read all instructions thoroughly before beginning.

4.1 Preparation

1. **Unpack and Organize:** Carefully unpack all components and lay them out. Keep parts organized to streamline the assembly process.
2. **Inspect Parts:** Check all parts for any manufacturing defects, such as paint in threaded holes or missing threads on nuts. Clean out any paint from threaded holes if necessary.
3. **Tools:** Gather necessary tools. Hand tools are recommended for tightening nuts and bolts to avoid damaging the finished paint surface.
4. **Location:** Choose a suitable location for your gazebo, ensuring it can be securely attached to a wall and anchored to the ground.

4.2 Assembly Steps

Follow the step-by-step guide provided in your package. Key structural elements include:

- **Frame Construction:** Assemble the main frame components. It is advisable to leave bolts for arm and beam connectors finger-tight initially to allow for adjustments when installing the roof panels.
- **Sun Panel Installation:** When installing the sun panels, remove the protective film from each panel before insertion. Using a solution of soap and water in a spray bottle can help panels slide into connector slots more easily. Ensure the 'leak' holes on the panels are facing upwards.
- **Wall Mounting:** The gazebo is designed to attach to a wall. All necessary accessories for wall attachment are provided.
- **Ground Anchoring:** The base of each post has pre-drilled holes for attachment to your deck or ground surface. Securely anchor the gazebo to prevent movement.

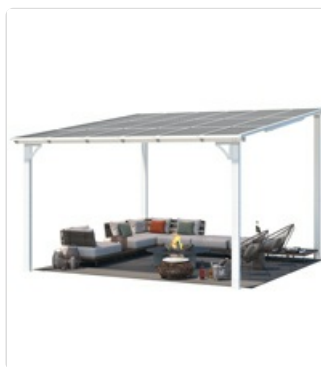


Image: Detail of sun panels and aluminum tubes providing structural support.

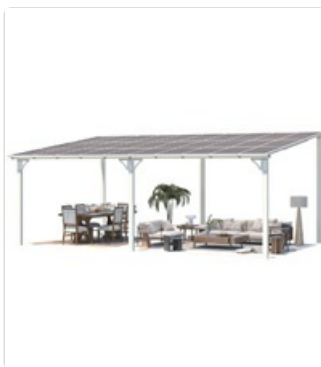


Image: Illustration of multiple keyholes and the triangular structure enhancing gazebo stability.



Image: Close-up of a stable frame leg with pre-drilled holes for ground attachment and additional holes for wall studs.

For visual guidance, refer to the step-by-step video tutorials available on the product page or by contacting customer support.

5. OPERATION

Your AECCOJOY Gazebo is designed for year-round use, offering protection from various weather conditions.

- **Sun Protection:** The heavily tinted roof panels block 99% of UV rays and provide UPF 50++ protection, making it suitable for use in sunny conditions.
- **Waterproof Performance:** The inclined roof design and meticulous detailing ensure complete water resistance, effectively shedding rain.
- **Snow Capacity:** The hardtop roof is engineered to withstand up to 7 inches of heavy snow, providing confidence in winter conditions.
- **Wind Resistance:** When properly installed and anchored, the gazebo can withstand winds up to 70 mph.



Image: Visual representation of the gazebo's performance in summer (UV protection) and winter (snow load capacity).

6. MAINTENANCE

Regular maintenance will extend the lifespan and appearance of your gazebo.

- **Cleaning:** Clean the frame and roof panels periodically with mild soap and water. Avoid abrasive cleaners or harsh chemicals that could damage the finish or panels.
- **Snow Removal:** During winter, promptly remove accumulated snow from the roof to prevent structural strain.
- **Inspection:** Periodically check all bolts, nuts, and anchoring points to ensure they remain tight and secure. Re-tighten if necessary.
- **Panel Condition:** Inspect roof panels for any cracks or damage. Contact support for replacements if needed.

7. TROUBLESHOOTING

If you encounter issues during assembly or use, consider the following:

- **Wobbly Structure:** Ensure all posts are securely anchored to the ground and the gazebo is firmly attached to the wall. Check that all frame bolts are tightened.
- **Difficulty with Bolts/Nuts:** If bolts strip easily or nuts are missing threads, ensure you are using appropriate hand tools and not over-tightening. Contact customer support for replacement hardware if needed.
- **Panels Not Sliding:** If roof panels are difficult to insert, ensure the protective film has been removed and try applying a soap and water solution to the edges.
- **Water Leakage:** Verify that all roof panels are correctly installed with 'leak' holes facing upwards and that all connections are sealed as per instructions.

If problems persist, please contact our professional support team for assistance.

8. SPECIFICATIONS

Feature	Detail
Brand	AECOJOY
Model Number	16413BK
Product Dimensions	168"L x 144"W x 96"H (14' x 12' x 8'H)
Floor Area	168 Square Feet
Item Weight	221 Pounds
Material	Aluminum, Metal, Sun Panels
Frame Material	Metal & Aluminum
Water Resistance Level	Waterproof
Ultraviolet Light Protection	UPF 50++
Assembly Required	Yes

DIMENSIONS

14 X 12 FT HARDTOP GAZEBO

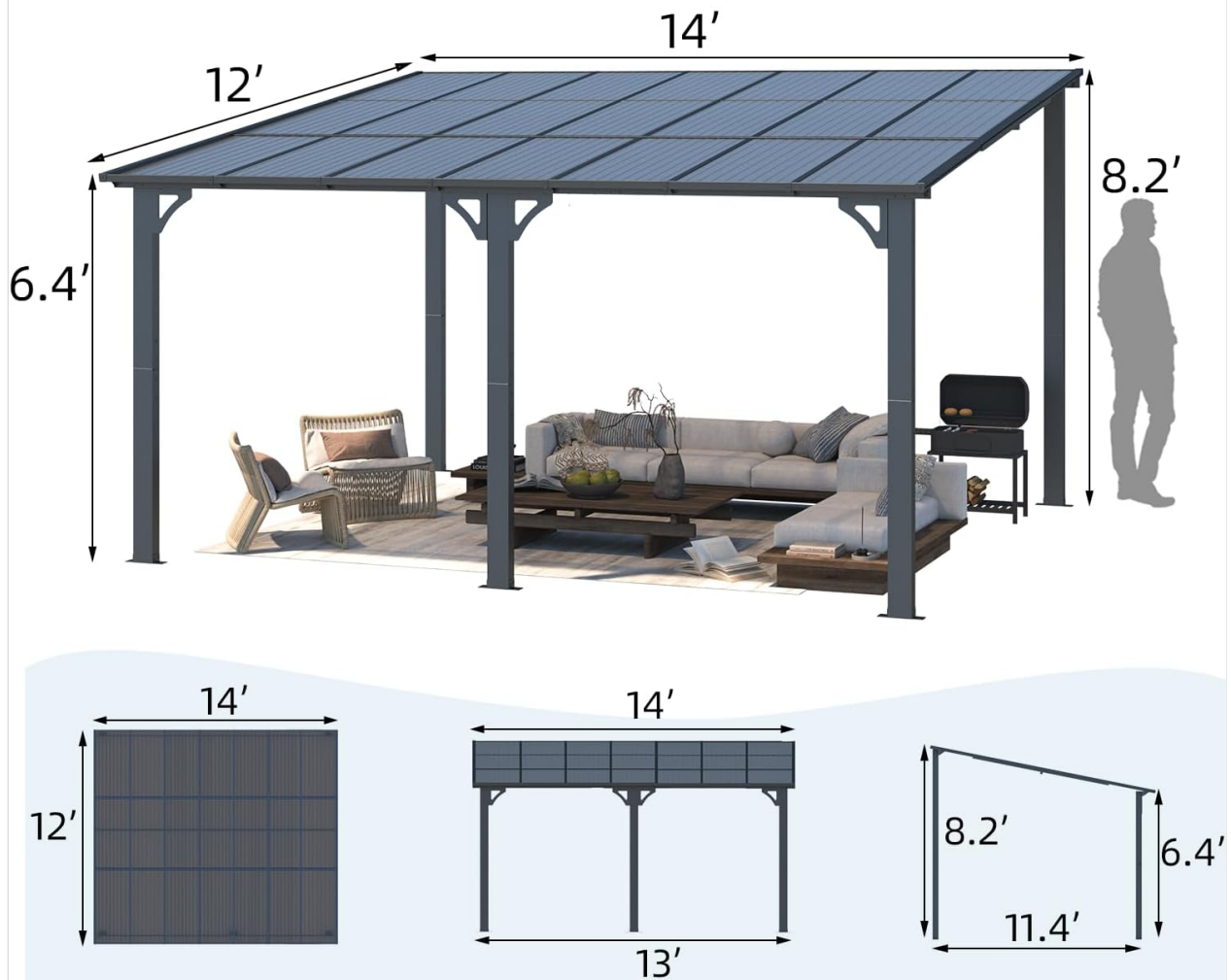




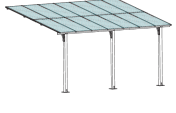



Image: Detailed dimensions diagram for the 14' x 12' Hardtop Gazebo.

9. WARRANTY AND SUPPORT

AECOJOY stands behind its products, offering a worry-free experience.

- **Warranty:** The product comes with a one-year warranty.
- **Lifetime Support:** We offer lifetime support for your gazebo.
- **Customer Service:** A professional team is available 24/7 to address any concerns related to installation, usage, maintenance, and more. Expert technical team members are available for remote assistance.
- **Replacements:** We provide maintenance and replacements for the product itself.

For assistance, please refer to the contact information provided in your product packaging or visit the AECOJOY official website.

<div><div>ASSEMBLY INSTRUCTIONS SS16403</div><div>12'x20' Attached Pergola</div><div><p>There are 10 steps in this assembly guide.</p><p>Please read the safety information on the second page carefully.</p><ul style="list-style-type: none">• Before starting, the installation ground should be level and free from obstructions below and around the installation area.• The pergola must be assembled on a flat, level surface.• The pergola must be assembled on a flat, level surface.• The pergola must be assembled on a flat, level surface.• The pergola must be assembled on a flat, level surface.</div><div></div><div><p>1. There are 10 steps in this assembly guide.</p><p>2. There are 10 steps in this assembly guide.</p><p>3. There are 10 steps in this assembly guide.</p><p>4. There are 10 steps in this assembly guide.</p><p>5. There are 10 steps in this assembly guide.</p></div></div>	<p>AECOJOY 12'x20' Attached Pergola Assembly Instructions (Model SS16403)</p> <p>Detailed assembly instructions for the AECOJOY 12'x20' Attached Pergola (Model SS16403). This guide provides step-by-step instructions, parts lists, and important safety information for building your pergola.</p>
<div><div>ASSEMBLY INSTRUCTIONS SS16401</div><div>8'x10' Attached Pergola</div><div><p>There are 10 steps in this assembly guide.</p><p>Please read the safety information on the second page carefully.</p><ul style="list-style-type: none">• Before starting, the installation ground should be level and free from obstructions below and around the installation area.• The pergola must be assembled on a flat, level surface.• The pergola must be assembled on a flat, level surface.• The pergola must be assembled on a flat, level surface.• The pergola must be assembled on a flat, level surface.</div><div></div><div><p>1. There are 10 steps in this assembly guide.</p><p>2. There are 10 steps in this assembly guide.</p><p>3. There are 10 steps in this assembly guide.</p><p>4. There are 10 steps in this assembly guide.</p><p>5. There are 10 steps in this assembly guide.</p></div></div>	<p>AECOJOY SS16401 8'x10' Attached Pergola Assembly Instructions</p> <p>Comprehensive assembly instructions for the AECOJOY SS16401 8'x10' Attached Pergola, including parts list, safety guidelines, and step-by-step assembly procedures.</p>
<div><div>ASSEMBLY INSTRUCTIONS SS16438</div><div>10'x14' Freestanding Gazebo</div><div><p>There are 10 steps in this assembly guide.</p><p>Please read the safety information on the second page carefully.</p><ul style="list-style-type: none">• Before starting, the installation ground should be level and free from obstructions below and around the installation area.• The gazebo must be assembled on a flat, level surface.• The gazebo must be assembled on a flat, level surface.• The gazebo must be assembled on a flat, level surface.• The gazebo must be assembled on a flat, level surface.</div><div></div><div><p>1. There are 10 steps in this assembly guide.</p><p>2. There are 10 steps in this assembly guide.</p><p>3. There are 10 steps in this assembly guide.</p><p>4. There are 10 steps in this assembly guide.</p><p>5. There are 10 steps in this assembly guide.</p></div></div>	<p>Assembly Instructions for AECOJOY 10'x14' Freestanding Gazebo SS16438</p> <p>Step-by-step assembly instructions for the AECOJOY 10'x14' freestanding gazebo (model SS16438). Includes a detailed parts list and assembly guidance.</p>
<div><div>8' x 5' Grill Gazebo, 16087</div><div>Assembly Instructions</div><div><p>There are 10 steps in this assembly guide.</p><p>Please read the safety information on the second page carefully.</p><ul style="list-style-type: none">• Before starting, the installation ground should be level and free from obstructions below and around the installation area.• The gazebo must be assembled on a flat, level surface.• The gazebo must be assembled on a flat, level surface.• The gazebo must be assembled on a flat, level surface.• The gazebo must be assembled on a flat, level surface.</div><div></div><div><p>1. There are 10 steps in this assembly guide.</p><p>2. There are 10 steps in this assembly guide.</p><p>3. There are 10 steps in this assembly guide.</p><p>4. There are 10 steps in this assembly guide.</p><p>5. There are 10 steps in this assembly guide.</p></div></div>	<p>8' x 5' Grill Gazebo Assembly Instructions - AECOJOY 16087</p> <p>Detailed assembly instructions for the AECOJOY 8' x 5' Grill Gazebo (Model 16087). Learn how to assemble your patio grill shelter step-by-step, including parts list and fixing methods.</p>
<div><div>ASSEMBLY INSTRUCTIONS SS16406</div><div>8' x 5' Attached Pergola</div><div><p>There are 10 steps in this assembly guide.</p><p>Please read the safety information on the second page carefully.</p><ul style="list-style-type: none">• Before starting, the installation ground should be level and free from obstructions below and around the installation area.• The pergola must be assembled on a flat, level surface.• The pergola must be assembled on a flat, level surface.• The pergola must be assembled on a flat, level surface.• The pergola must be assembled on a flat, level surface.</div><div></div><div><p>1. There are 10 steps in this assembly guide.</p><p>2. There are 10 steps in this assembly guide.</p><p>3. There are 10 steps in this assembly guide.</p><p>4. There are 10 steps in this assembly guide.</p><p>5. There are 10 steps in this assembly guide.</p></div></div>	<p>AECOJOY SS16406 8' x 5' Attached Pergola Assembly Instructions</p> <p>Step-by-step guide for assembling the AECOJOY SS16406 8' x 5' Attached Pergola. Includes a detailed parts list, safety precautions, and warranty information for easy installation.</p>
<div><div>ASSEMBLY INSTRUCTIONS SS16304BK</div><div>10'x14' Attached Pergola</div><div><p>There are 10 steps in this assembly guide.</p><p>Please read the safety information on the second page carefully.</p><ul style="list-style-type: none">• Before starting, the installation ground should be level and free from obstructions below and around the installation area.• The pergola must be assembled on a flat, level surface.• The pergola must be assembled on a flat, level surface.• The pergola must be assembled on a flat, level surface.• The pergola must be assembled on a flat, level surface.</div><div></div><div><p>1. There are 10 steps in this assembly guide.</p><p>2. There are 10 steps in this assembly guide.</p><p>3. There are 10 steps in this assembly guide.</p><p>4. There are 10 steps in this assembly guide.</p><p>5. There are 10 steps in this assembly guide.</p></div></div>	<p>AECOJOY SS16304BK 10'x14' Attached Pergola Assembly Instructions</p> <p>Comprehensive assembly instructions for the AECOJOY SS16304BK 10'x14' attached pergola. Includes parts list, step-by-step guidance, safety precautions, and warranty information.</p>