

**Manuals+**

[Q & A](#) | [Deep Search](#) | [Upload](#)

[manuals.plus](#) /

› [BESTTAB](#) /

› [BESTTAB A20 Android 14 Tablet User Manual](#)

## BESTTAB A20

# BESTTAB A20 Android 14 Tablet User Manual

Model: A20 | Brand: BESTTAB



## INTRODUCTION

This manual provides comprehensive instructions for setting up, operating, and maintaining your BESTTAB A20 Android 14 Tablet. Please read this manual thoroughly before using your device to ensure optimal performance and longevity.



*Image: The BESTTAB A20 tablet shown with its included accessories: a detachable keyboard, a wireless mouse, and a stylus, highlighting its versatility as a 2-in-1 device.*

## WHAT'S IN THE BOX

Upon unboxing your BESTTAB A20 tablet, verify that all the following items are included:

- 1x BESTTAB A20 Tablet
- 1x Keyboard
- 1x Mouse
- 1x Stylus
- 1x Protective Case
- 1x Charger
- 1x USB Cable
- 1x Tempered Glass Screen Protector (pre-applied or separate)
- 1x Tablet Stand

### what's in the box?



Image: A visual representation of all items included in the BESTTAB A20 package, neatly arranged to show the tablet, keyboard, mouse, stylus, case, charger, cable, and screen protector.

## PRODUCT FEATURES

### Display and Visuals

The BESTTAB A20 features a 10.1-inch FHD+ IPS screen with a resolution of 1920 x 1200 pixels, offering a clear and vibrant viewing experience. With an 83% screen-to-body ratio, it provides an expansive display area. The tablet supports Widevine L1, enabling high-resolution streaming from various platforms. A screen brightness of 350 nits ensures visibility even in bright conditions.

### 10.1-inch FHD In-cell Display

The ultimate in lightweight design meets a 10.1-inch screen. Throw yourself into the FHD digital world.

**1920\*1200**  
FHD In-cell

**Widevine L1 Support**  
Available for 1080P Streaming

**16:10**  
Golden aspect ratio

**120Hz**  
Touch Sample Rate



Image: A close-up of the tablet's 10.1-inch FHD In-cell display, highlighting its 1920x1200 resolution, Widevine L1 support for 1080P streaming, 16:10 aspect ratio, and 120Hz touch sample rate.



## Widevine L1 Support

Streaming Films, Series, and Videos in Brilliant FHD Quality

Immerse yourself in your favorite films and series with impressive details.



Netflix



prime video



YouTube



HBO GO

Image: The tablet displaying a video, emphasizing its Widevine L1 support for streaming films, series, and videos in brilliant FHD quality from platforms like Netflix, Prime Video, YouTube, and HBO Go.

## Performance and Storage

Equipped with 8GB of RAM, the BESTTAB A20 utilizes RAM expansion technology to reach up to 24GB, significantly boosting running speed by 30%. It comes with 256GB of internal storage, sufficient for applications, media, and documents. For extensive storage needs, a TF card slot supports expansion up to 2TB.

### Up to 24GB RAM

Run More, Run Faster.



Up to 20 apps running simultaneously in the background

25% Faster App Launching Speed ↑

### 256GB Memory, 2TB Expandable Storage.

More to Store, More to Enjoy.



≈498.6K+ Photos



≈59.4K+ Short Videos



≈900K+ Songs



Image: A visual demonstrating the tablet's memory capabilities, showing "Up to 24GB RAM" and "256GB Memory, 2TB Expandable Storage," with icons representing the vast number of photos, short videos, and songs it can store.



Image: A graphic emphasizing the tablet's storage expansion, showing "Up to 24GB RAM + 256GB ROM + 2TB TF Expansion" and illustrating the capacity for photos, short videos, and songs.

## Processor

The tablet is powered by a 12nm Unisoc T606 Octa-Core processor, featuring 2x A75 cores at 1.6GHz and 6x A55 cores at 1.6GHz, along with an Arm Mali G57 GPU at 650MHz. This configuration ensures smooth operation and efficient multitasking for various applications, from office work to gaming and entertainment.



Image: A detailed view of the Unisoc T606 Octa-Core processor chip, illustrating its components like 24GB RAM, 256GB ROM, Arm Mali G57 GPU, and the A75/A55 cores.

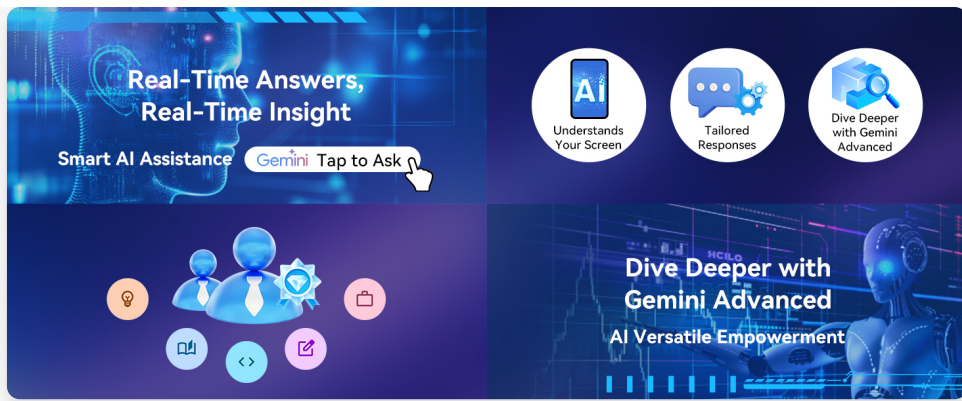


Image: A graphic detailing the Unisoc T606 Octa Core processor, emphasizing its design for speed and performance with specific core configurations and GPU information.

## Operating System and AI

The BESTTAB A20 runs on Android 14 and integrates Google Gemini AI for optimized performance and enhanced multitasking. This AI-driven optimization ensures smooth operation and fast response times. The tablet is Google GMS certified, allowing full access to the Google Play Store for downloading your preferred applications. It also features a PC mode for improved app organization and desktop customization.



Image: The tablet screen displaying the Android 14 interface, with icons for Google Play and various apps, indicating GMS certification and access to a wide range of applications.

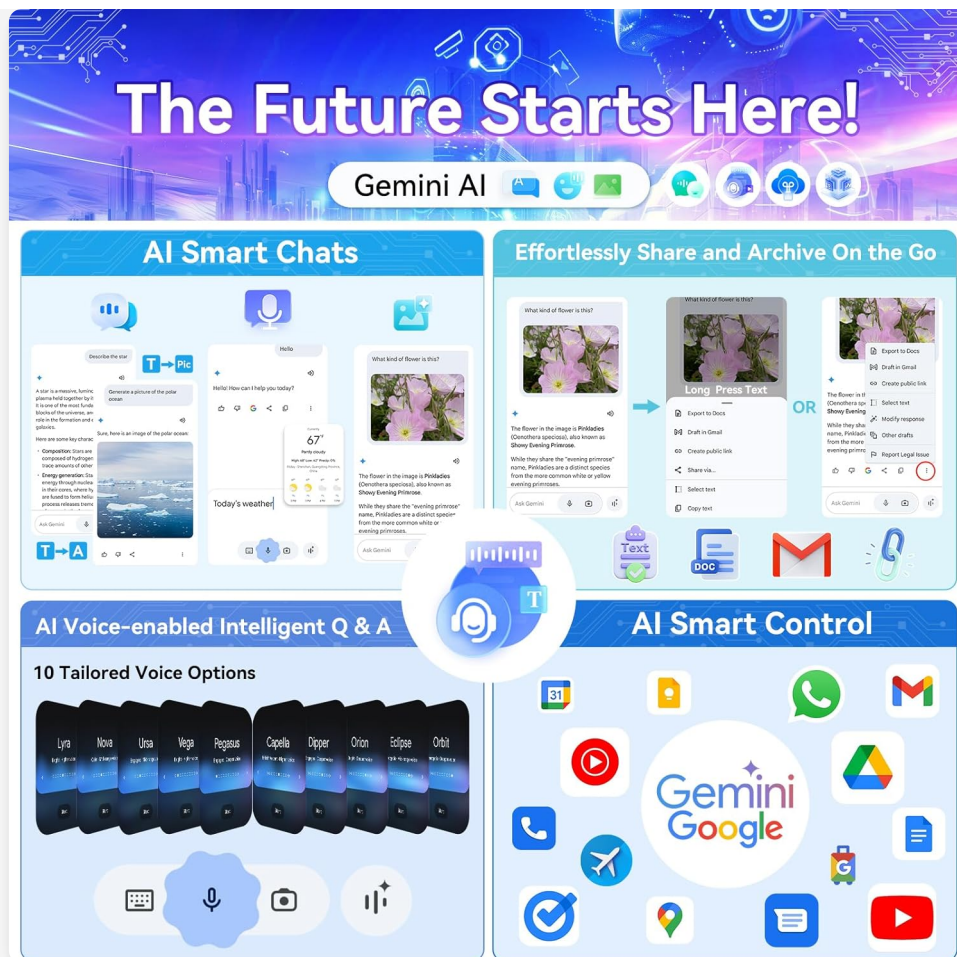


Image: A graphic showcasing the capabilities of Google Gemini AI, including AI Smart Chats, effortless sharing and archiving, AI Voice-enabled Intelligent Q&A with tailored voice options, and AI Smart Control for various applications.



Image: A display of the Pure Android 14 interface, highlighting features like Digital Well-being & Parental Control, Drag-and-Drop Function, Predictable Animation, Scalable Texts, and Real-time Subtitles.

## Connectivity and Cameras

The tablet supports 2.4G/5G high-speed dual-band WiFi for stable and fast internet connections. It features a 5MP front AI camera for selfies and video calls, and an 8MP + 2MP rear AI camera for capturing high-definition photos and videos. Bluetooth 5.0 is included for seamless wireless accessory connections and file transfers.



Image: The tablet connected to a keyboard and mouse, with Wi-Fi signals emanating, illustrating its 5G WiFi capability for stable and fast connections, ideal for streaming, gaming, and video conferencing.

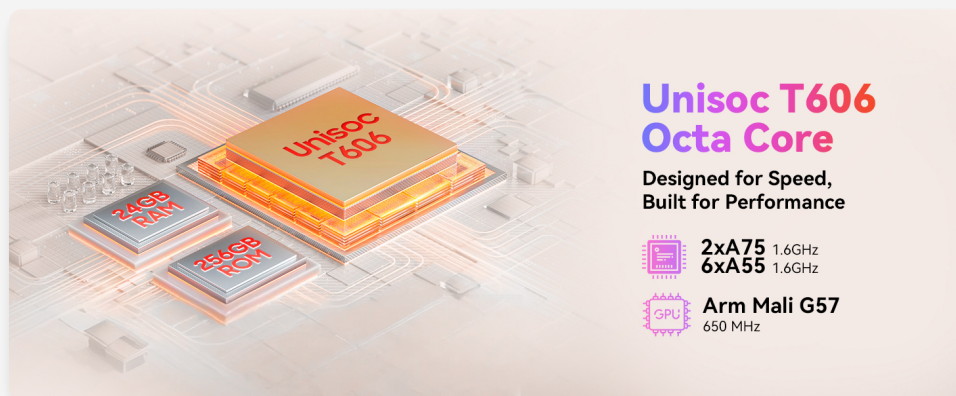


Image: A visual representation of the tablet's camera system, highlighting the 8MP+2MP Rear AI Cameras and the 5MP Front AI camera, with example images demonstrating their capability for clear and beautiful moments.

## Battery and Audio

The BESTTAB A20 is equipped with a 5000mAh battery, providing up to 6 hours of web surfing, 30 hours of music playback, or 5 hours of gaming. Charging is convenient via the Type-C interface with 5V/2A fast charging. It includes a 3.5mm headphone jack (headphones sold separately) and dual smart speakers for an immersive audio-visual experience.

## As Slight As It Can Be



**412g**

Ease to be Carried Around



**8.3mm**

Comfortably Grasped in the Hand



## Durable & Long-lasting

**5000mAh**



**6hrs**  
Website



**5hrs**  
Video



**5.5hrs**  
Game



**30hrs**  
Music



**336hrs**  
Standby

Image: A graphic illustrating the tablet's 5000mAh battery capacity and its estimated usage times: 6 hours for website browsing, 5 hours for video playback, 5.5 hours for gaming, 30 hours for music, and 336 hours of standby time.

## On One Single Charge, Good for 336hrs of Standby

Power Your Adventures Nonstop



6hrs  
Website



5hrs  
Video



5.5hrs  
Game



30hrs  
Music



336hrs  
Standby



Type-C



Battery  
saving mode

Image: The tablet being charged via its Type-C port, with a visual representation of the battery level, emphasizing its 5000mAh capacity and battery saving mode for extended standby time.

Up to 24GB RAM +  
256GB ROM +  
2TB TF Expansion

### More Space, More Speed

The 256 GB ROM on the BESTTAB A20 is large enough to store all your precious videos, photos, games and apps. It can also be expanded with a TF card by up to 2 TB with a TF card, so you can keep more and delete less



≈ 896K+ Photos



≈ 15K+ Short Videos



≈ 2,350K+ Songs



Image: A depiction of the tablet's audio features, showing the Type-C charging interface, a 3.5mm headphone jack, and the dual-box speakers with Smart-K technology for an enhanced audio experience.

## Design

Weighing approximately 412 grams and measuring only 8.3mm thick, the BESTTAB A20 is designed for portability and comfortable handling. Its neat flat-edged design and metal chassis contribute to its sleek appearance and durability.

## Neat Flat-edged Design

Easy to Hold. Chic to Behold



Image: A side profile view of the tablet, illustrating its 412g weight and 8.3mm ultra-thin body, emphasizing its ease of portability and comfortable grip, along with its durable metal chassis.

## SETUP GUIDE

### 1. Initial Power On

1. Press and hold the Power button located on the side of the tablet until the BESTTAB logo appears.
2. Follow the on-screen prompts to select your language, region, and agree to the terms and conditions.
3. Connect to a Wi-Fi network to complete the initial setup, including signing into your Google account.

### 2. Connecting Accessories

Your BESTTAB A20 tablet comes with a keyboard, mouse, and stylus for enhanced productivity.

#### Keyboard:

- The keyboard typically connects via Bluetooth. Ensure Bluetooth is enabled on your tablet (Settings > Connected devices > Bluetooth).
- Put the keyboard into pairing mode (refer to the keyboard's specific instructions, usually a button press).
- On your tablet, select the keyboard from the list of available Bluetooth devices and follow any pairing prompts.

#### Mouse:

- If it's a Bluetooth mouse, follow the same steps as for the keyboard.
- If it's a USB dongle mouse, insert the USB receiver into the tablet's USB-C port using an appropriate adapter if necessary. The tablet should automatically detect it.

#### Stylus:

- The stylus may connect via Bluetooth or be a passive stylus. For Bluetooth styluses, pair it like other Bluetooth devices. Passive styluses require no pairing.

### 3. Inserting a TF Card (Optional)

- Locate the TF card slot on the side of the tablet.
- Gently insert the TF card into the slot until it clicks into place. Ensure the card is oriented correctly.
- The tablet will prompt you to format the card for internal or portable storage. Choose the option that best suits your needs.

## OPERATING INSTRUCTIONS

## Basic Navigation

- **Home Screen:** Swipe left or right to navigate between home screens.
- **App Drawer:** Swipe up from the bottom of the screen to access all installed applications.
- **Notifications & Quick Settings:** Swipe down from the top of the screen to view notifications and access quick settings toggles.
- **Multitasking:** Tap the square navigation button (or swipe up and hold from the bottom if using gesture navigation) to view recently opened apps.

## Using Android 14 Features

Your tablet runs on the latest Android 14 operating system, offering enhanced privacy controls, improved performance, and new customization options.

- **Privacy Dashboard:** Access Settings > Privacy to manage app permissions and review privacy activity.
- **Digital Wellbeing & Parental Controls:** Monitor screen time and set limits for apps and content via Settings > Digital Wellbeing & parental controls.
- **PC Mode:** Activate PC mode for a desktop-like experience, allowing for better window management and external accessory integration.

## Google Gemini AI Integration

The BESTTAB A20 leverages Google Gemini AI to provide intelligent assistance and optimize user experience.

- **AI Smart Chats:** Engage in intelligent conversations and get quick answers.
- **AI Voice-enabled Q&A:** Use voice commands for queries and receive tailored responses.
- **AI Smart Control:** Streamline tasks and manage applications more efficiently through AI-driven suggestions.

## MAINTENANCE

### Battery Care

- Avoid fully discharging the battery frequently. Charge the tablet before it drops below 20%.
- Do not expose the tablet to extreme temperatures (hot or cold), as this can degrade battery life.
- Use only the provided charger and cable, or certified compatible accessories, to prevent damage.

### Cleaning Your Tablet

- Power off the tablet before cleaning.
- Use a soft, lint-free cloth (e.g., microfiber cloth) to wipe the screen and body.
- For stubborn smudges, lightly dampen the cloth with water or a screen cleaner specifically designed for electronics. Avoid harsh chemicals or abrasive materials.

## TROUBLESHOOTING

If you encounter issues with your BESTTAB A20 tablet, refer to the table below for common problems and their solutions.

Problem	Possible Cause	Solution
---------	----------------	----------

Problem	Possible Cause	Solution
Tablet won't turn on	Low battery; System crash	Charge the tablet for at least 30 minutes. If still unresponsive, press and hold the Power button for 10-15 seconds to force a restart.
Screen is unresponsive	Temporary software glitch; Screen protector interference	Restart the tablet. Ensure the screen protector is properly applied and not interfering with touch.
Wi-Fi connection issues	Router problem; Incorrect password; Tablet Wi-Fi disabled	Restart your Wi-Fi router. Forget the network on the tablet and reconnect. Ensure Wi-Fi is enabled in settings.
Accessories (keyboard/mouse) not connecting	Bluetooth not enabled; Pairing mode not active; Battery low on accessory	Ensure Bluetooth is on. Put the accessory in pairing mode. Check accessory battery. Re-pair the device.
Apps crashing or freezing	Insufficient RAM; App bug; Outdated app	Close background apps. Clear app cache (Settings > Apps > [App Name] > Storage > Clear cache). Update the app from Google Play Store.

## SPECIFICATIONS

Feature	Detail
Model	A20
Operating System	Android 14
Screen Size	10.1 Inches
Screen Resolution	1920 x 1200 pixels (FHD+ IPS)
Processor	Unisoc T606 Octa-Core (2 GHz)
RAM	8GB (Expandable to 24GB)
Internal Storage	256GB
Expandable Storage	Up to 2TB via TF Card
Rear Camera	8MP + 2MP AI Camera
Front Camera	5MP AI Camera
Battery Capacity	5000mAh
Connectivity	2.4G/5G WiFi, Bluetooth 5.0
Ports	Type-C, 3.5mm Headphone Jack
Dimensions (LxWxH)	9.6 x 6.6 x 0.39 inches

Feature	Detail
Item Weight	12.8 ounces (approx. 363g)

## WARRANTY AND SUPPORT

BESTTAB offers a **24-month warranty** for the A20 tablet. This warranty covers manufacturing defects and ensures free repair services within the specified period. For any issues or technical assistance, please contact BESTTAB customer service via Amazon email or through the official BESTTAB Flag-ship Store. Our commitment is to provide a great user experience through strict quality control and dedicated support.



*Image: A graphic indicating BESTTAB's two-year warranty support, emphasizing strict examination and high-quality testing processes for all products, and offering 24-month free repair warranty and lifetime technician support.*

