

## Manuals+

[Q & A](#) | [Deep Search](#) | [Upload](#)

manuals.plus /

› [WAVLINK](#) /

› [WAVLINK AC600 Outdoor WiFi Extender Instruction Manual](#)

## WAVLINK AC600

# WAVLINK AC600 Outdoor WiFi Extender Instruction Manual

Model: AC600

## 1. PRODUCT OVERVIEW

The WAVLINK AC600 Outdoor WiFi Extender is a dual-band wireless device designed to extend network coverage in outdoor environments. It supports various operating modes including Repeater, Router, AP, and AP+Repeater, providing flexible solutions for different networking needs. Its robust IP67-rated weatherproof enclosure ensures reliable performance in diverse weather conditions.





Image: The WAVLINK AC600 Outdoor WiFi Extender, showcasing its main unit and detachable antennas.

## Key Features:

- **Dual Band Connectivity:** Supports 2.4GHz (up to 150Mbps) and 5GHz (up to 450Mbps) for a combined speed of up to 600Mbps.
- **Power over Ethernet (PoE):** Simplifies installation with a single cable for both power and data. Supports passive PoE (included) and standard 802.3at/af active PoE.
- **IP67 Weatherproof:** Designed to withstand extreme temperatures (-10°C to 50°C), moisture, dust, 15KV ESD, and 6KV lightning strikes.
- **Multiple Operation Modes:** Functions as a Repeater, Router, Access Point (AP), or AP+Repeater.
- **High-Gain Antennas:** Equipped with two 7dBi detachable omni-directional antennas for extended range.

## 2. PACKAGE CONTENTS

Verify that all items listed below are included in your package. If any items are missing or damaged, please contact WAVLINK support.



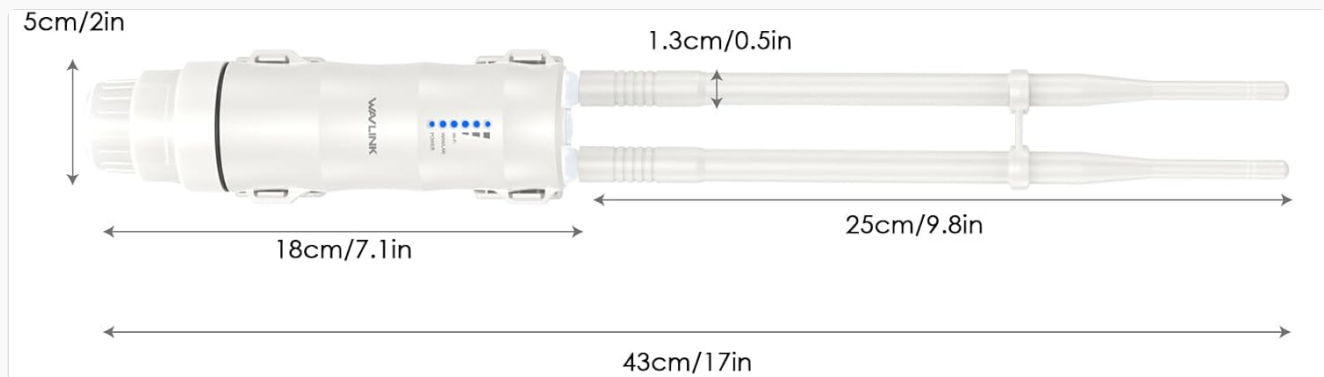
Image: All components included in the WAVLINK AC600 Outdoor WiFi Extender package.

- 1 x AC600 Outdoor WiFi Extender
- 2 x Omni-directional Antennas
- 1 x RJ-45 Network Cable
- 1 x Power Adapter
- 1 x PoE Converter

## 3. SETUP INSTRUCTIONS

### 3.1 Physical Installation

The WAVLINK AC600 supports both pole and wall mounting. Choose the most suitable location for optimal signal coverage, ensuring it is within range of your existing network or internet source.



PS: Data by manual measurement for reference only.

## Flexible Deployment



Image: Flexible deployment options, including pole mounting and wall mounting, with product dimensions.

### Mounting Steps:

1. Fasten the main body holder to your chosen pole or wall using appropriate hardware.
2. Plug the device into the holder, ensuring it is securely seated.
3. Connect the RJ45 cable to the RJ45 port on the device.
4. Connect the other end of the RJ45 cable to the PoE converter.
5. Connect the power adapter to the PoE converter and plug it into a power outlet.

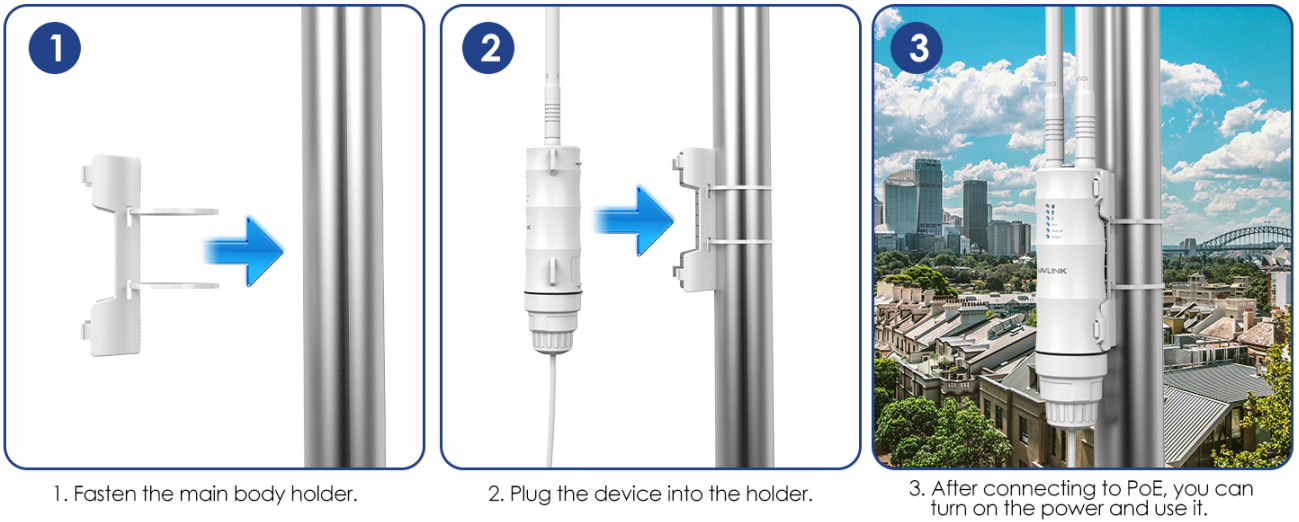
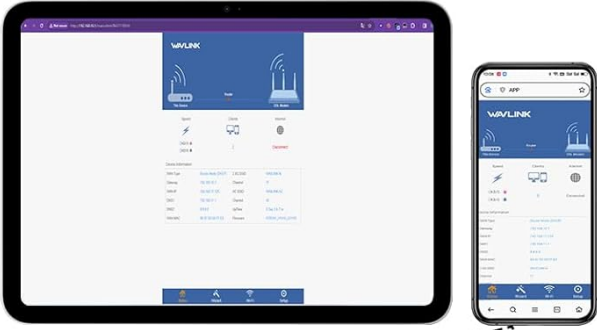


Image: Visual guide for the initial installation steps, showing how to fasten the holder and connect the device.

### Cable and Antenna Connection:


## Installation & Setup Instructions

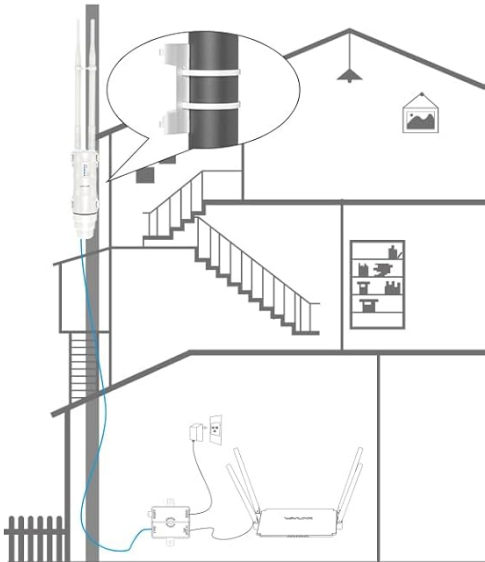



**SSID:** WAVLINK-N; WAVLINK-AC

**Default IP:** 192.168.10.1

**Password:** admin



- 4** Connect the RJ45 cable to the RJ45 port.
- 3** Pass the RJ45 cable through the holder.
- 2** Pass the RJ45 cable through the rubber seal.
- 1** Pass the RJ45 cable through the spiral cover.
- 5** Tighten to secure the holder.
- 6** Insert the rubber seal into the holder.
- 7** Secure the spiral cover by screwing it on.

Image: Step-by-step instructions for connecting the RJ45 cable and antennas, including sealing components.

1. Pass the RJ45 cable through the spiral cover.
2. Pass the RJ45 cable through the rubber seal.
3. Pass the RJ45 cable through the holder.
4. Connect the RJ45 cable to the RJ45 port on the device.
5. Spin the 2.4/5G antenna onto the 2.4/5G external RP-SMA connector.
6. Screw up the holder.
7. Plug the rubber seal into the holder.
8. Secure the spiral cover by screwing it on.

## 3.2 Initial Configuration

After physical installation, configure the device via a web browser.

- Connect your computer to the device using an Ethernet cable or wirelessly to the default SSID.
- Open a web browser and enter the default IP address: **192.168.10.1**
- Enter the default username and password: **admin** (for both).
- Follow the on-screen wizard to select your desired operating mode and configure network settings (SSID, password, etc.).

**Default SSIDs:** WAVLINK-N (for 2.4GHz), WAVLINK-AC (for 5GHz)

## 4. OPERATING MODES

---

The WAVLINK AC600 offers four operational modes to suit various network requirements:

# 4-in-1 Optional Working Modes

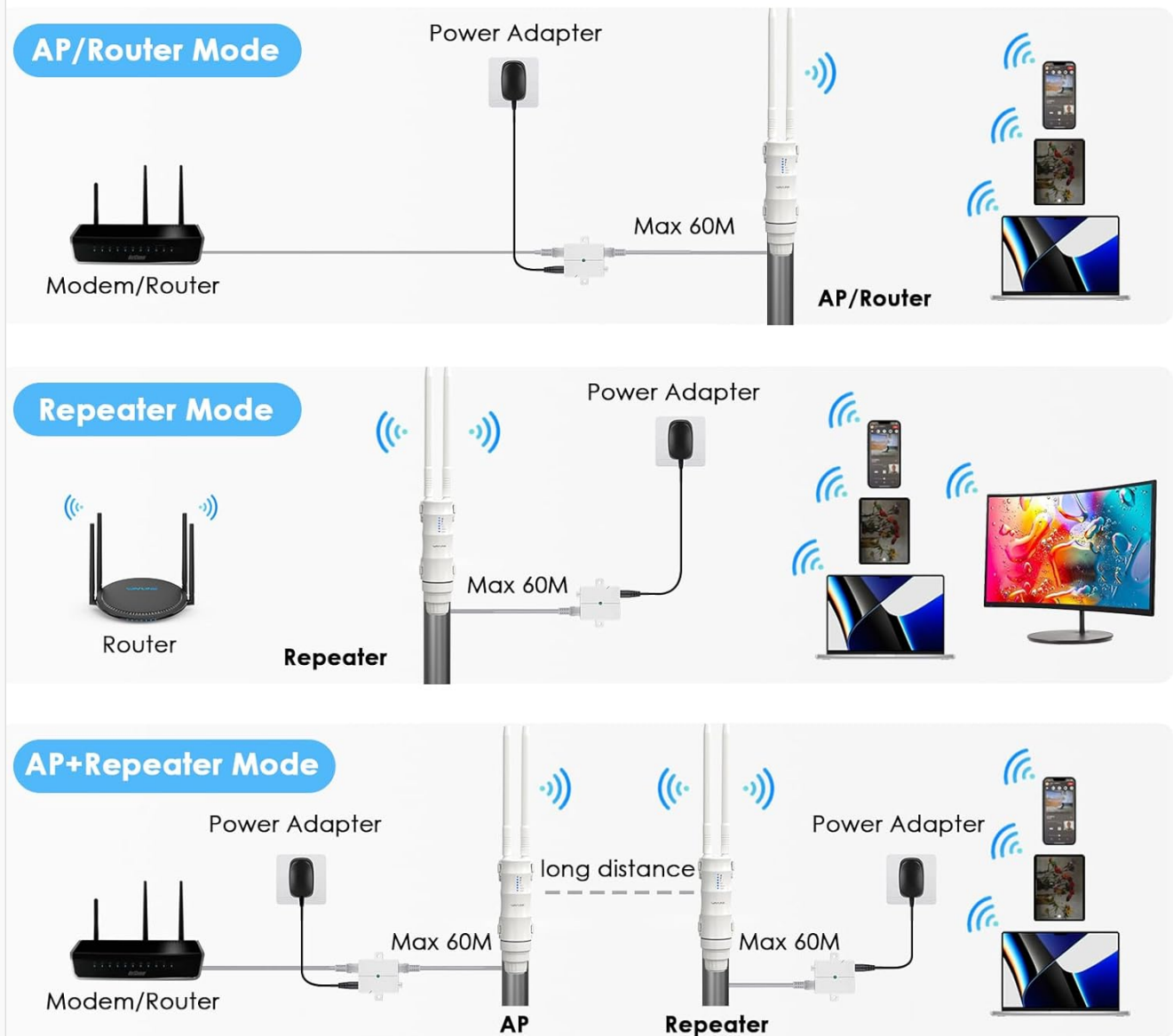


Image: Visual representation of the AP/Router, Repeater, and AP+Repeater modes.

## 4.1 AP/Router Mode

In this mode, the device acts as a primary router or an access point, creating a new wireless network from a wired internet connection (e.g., from a modem). It provides internet access to connected wireless devices.

## 4.2 Repeater Mode

The device extends the coverage of an existing wireless network. It receives the wireless signal from your main router and re-broadcasts it, effectively eliminating Wi-Fi dead zones.

## 4.3 AP Mode

Similar to AP/Router mode, but typically used when you already have a router and want to add wireless capabilities to a wired network segment or extend an existing wired network wirelessly.

## 4.4 AP+Repeater Mode

This mode allows the device to act as both an Access Point and a Repeater simultaneously, extending the network while also providing a new access point. This is useful for creating a mesh-like network where multiple units work together.



Image: Overview of Repeater, Router, and AP modes, showing how devices connect.

## 5. MAINTENANCE

---

To ensure the longevity and optimal performance of your WAVLINK AC600 Outdoor WiFi Extender, follow these maintenance guidelines:

- **Regular Inspection:** Periodically check the device and its connections for any signs of wear, damage, or loose cables.
- **Cleaning:** Gently wipe the exterior of the device with a soft, dry cloth to remove dust and debris. Do not use liquid cleaners or abrasive materials.
- **Firmware Updates:** Check the official WAVLINK website for available firmware updates. Keeping the firmware updated can improve performance, security, and add new features.
- **Environmental Considerations:** While the device is IP67 weatherproof, avoid placing it in locations prone to excessive physical impact or prolonged submersion. Ensure proper ventilation around the PoE converter, as it is not waterproof.

## 6. TROUBLESHOOTING

---

If you encounter issues with your WAVLINK AC600, refer to the following common problems and solutions:

### 6.1 No Power/Indicator Lights Off

- Ensure the power adapter is securely connected to the PoE converter and a working power outlet.
- Verify that the Ethernet cable from the device is correctly plugged into the PoE converter's PoE port.
- Check the power outlet by plugging in another device.

### 6.2 Cannot Access Web Management Page

- Confirm your computer is connected to the device via Ethernet or its default Wi-Fi SSID.
- Ensure your computer's IP settings are set to obtain an IP address automatically (DHCP).
- Double-check the IP address entered in the browser: **192.168.10.1**
- Try clearing your browser's cache or using a different browser.
- If you have changed the device's IP address, use the new IP.

### 6.3 Slow Internet Speed or Limited Range

- **Ethernet Port Limitation:** The WAVLINK AC600 features a 10/100 Mbps Ethernet port. This means the maximum internet speed the device can deliver is approximately 100 Mbps, even if your internet service provider offers higher speeds. This is a hardware limitation.
- **Placement:** Relocate the extender to a central position between your main router and the desired coverage area. Avoid physical obstructions like thick walls or metal objects.

- **Antenna Orientation:** Adjust the detachable antennas for optimal signal reception and transmission.
- **Interference:** Minimize interference from other electronic devices (e.g., microwaves, cordless phones) operating on similar frequencies.
- **Operating Mode:** Ensure the device is configured in the most appropriate mode for your network setup.

## 6.4 Forgot Login Password

- Perform a factory reset. Locate the reset button (usually a small pinhole) on the device. With the device powered on, press and hold the reset button for approximately 10 seconds until the indicator lights flash. The device will revert to factory default settings (username: **admin**, password: **admin**, IP: **192.168.10.1**).

## 7. SPECIFICATIONS

Feature	Detail
Model Number	AC600
Product Dimensions	7.1 x 2 x 2 inches
Item Weight	1.06 pounds
Wireless Communication Standard	802.11ac
Data Transfer Rate	Up to 450 Mbps (5GHz), Up to 150 Mbps (2.4GHz)
Frequency Band Class	Dual-Band (2.4GHz & 5GHz)
Special Features	Access Point Mode, Detachable Antenna, Guest Mode, Power Over Internet, Weatherproof
Weatherproof Rating	IP67
Operating Temperature	-10°C to 50°C

## 8. WARRANTY AND SUPPORT

WAVLINK is committed to providing high-quality products and reliable support. Since 2003, WAVLINK has been a leading designer and manufacturer of IT peripherals, with products distributed across the Americas, Europe, and Asia-Pacific.

### 8.1 Technical Support

For technical assistance, product inquiries, or troubleshooting beyond this manual, please contact WAVLINK support. WAVLINK tech support is globally free.



Image: WAVLINK contact details, including phone number and email address for customer support.

- **Phone:** +1 8889730883 (UTC -5) Mon - Fri 9AM - 6PM
- **Email:** [Contact@wavlink.com](mailto:Contact@wavlink.com)
- **Website:** Visit the official WAVLINK website for FAQs, drivers, and further support resources.

## 8.2 Warranty Information

Please refer to the warranty card included with your product or visit the official WAVLINK website for detailed warranty terms and conditions. Keep your purchase receipt for warranty claims.