

FirFurd Tall Multifunctional Storage Cabinet

FirFurd Tall Multifunctional Storage Cabinet User Manual

Model: Tall Multifunctional Storage Cabinet

1. PRODUCT OVERVIEW

The FirFurd Tall Multifunctional Storage Cabinet is designed to provide versatile storage solutions for various rooms in your home or office. Featuring a robust construction and a sleek black finish, this cabinet offers both open and closed storage options to keep your belongings organized and accessible.

Key Features:

- **Spacious Storage:** Two large closed compartments and three open compartments.
- **Adjustable Shelves:** Shelves within closed compartments can be adjusted to suit varying item heights.
- **Multifunctional Design:** Suitable for bathrooms, kitchens, offices, or general storage areas.
- **Durable Construction:** Made from high-quality wood and metal hardware, supporting up to 80 kg.
- **Safety Features:** Equipped with an anti-tipping safety mechanism for enhanced stability.
- **Easy Maintenance:** Waterproof surface for simple cleaning.





Image 1.1: Main view of the FirFurd Tall Multifunctional Storage Cabinet, showcasing its design and storage capabilities.

2. SETUP AND ASSEMBLY

This product requires assembly. Please ensure you have received all packages before beginning. The cabinet is typically shipped in two separate packages, which usually arrive together.

2.1 Package Contents

Verify that all components and hardware listed in the included assembly instructions are present. Each part is typically marked with corresponding numbers or letters for easy identification.

Tipps zur Lieferung:

*Das Produkt kommt in zwei Paketen.
Bitte beginnen Sie mit dem Montieren,
wenn Sie die beiden Pakete erhalten haben.
Anzahl der Packstücke: 2*

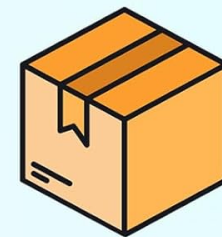
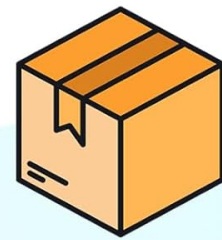


Image 2.1: Illustration indicating the product is delivered in two packages. Please wait for both to arrive before starting assembly.

2.2 Assembly Instructions

1. **Unpack Components:** Carefully remove all parts from the packaging. Lay them out on a clean, soft surface to prevent scratches.
2. **Follow Manual:** Refer to the detailed assembly manual provided with your product. Follow the step-by-step diagrams and instructions precisely.
3. **Secure Connections:** Ensure all screws, bolts, and connectors are tightened securely. Do not overtighten.
4. **Install Anti-Tipping Device:** For safety, it is crucial to install the anti-tipping device. Attach the device to the cabinet and secure it to a wall stud according to the instructions. This prevents accidental tipping, especially in households with children or pets.



Image 2.2: Detail showing the anti-tipping safety mechanism, magnetic door closure, and silver metal handle.

2.3 Dimensions

The assembled cabinet dimensions are approximately 180.5 cm (Height) x 60 cm (Width) x 40 cm (Depth).

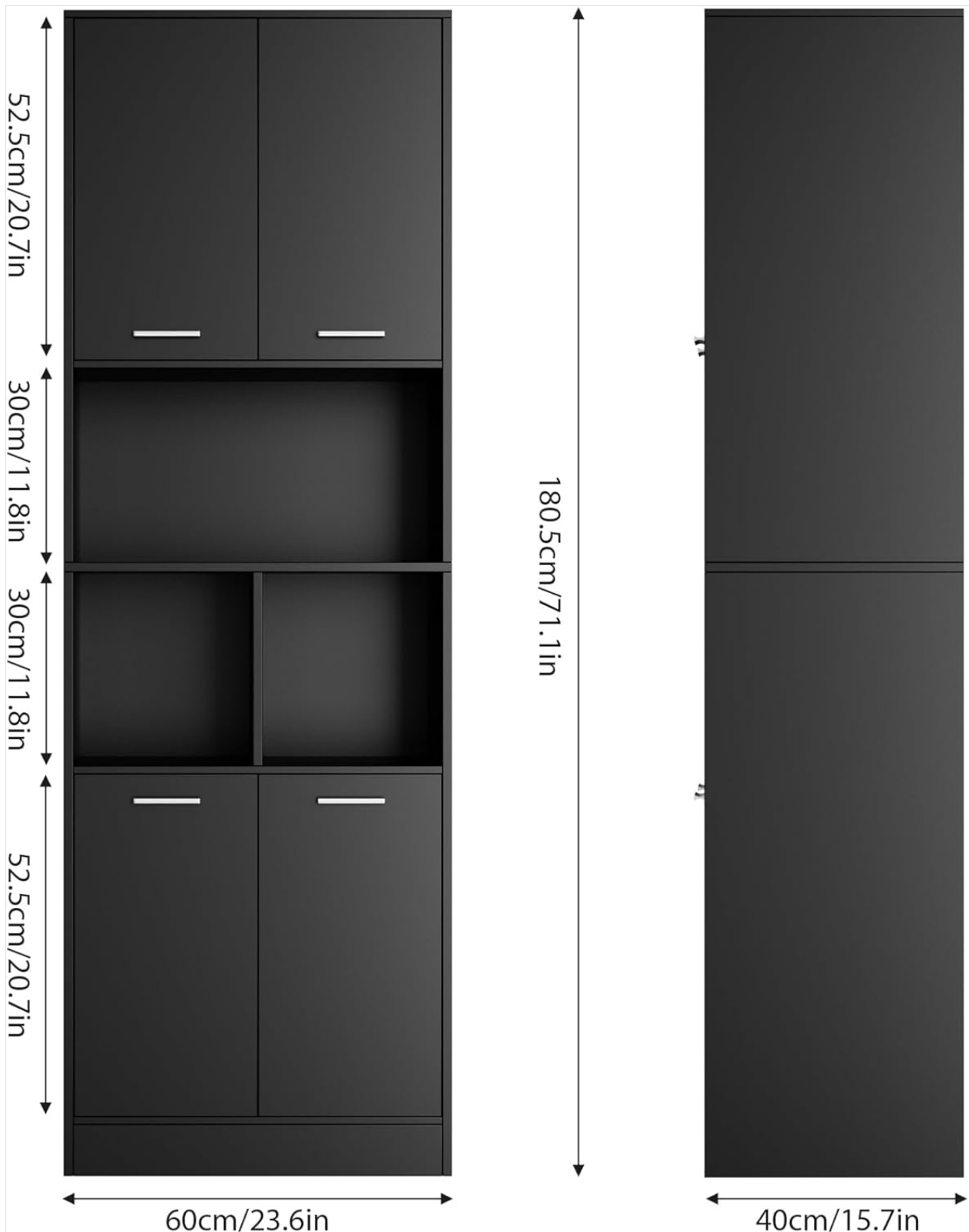


Image 2.3: Dimensional diagram of the cabinet, illustrating its height, width, and depth.

3. OPERATING AND USAGE

The FirFurd cabinet is designed for versatile storage across various environments.

3.1 Storage Compartments

- **Closed Compartments:** Utilize the two large closed compartments for items requiring privacy or protection from dust, such as towels, linens, or personal documents. The magnetic door closures ensure secure sealing.

- **Open Compartments:** The three open compartments are ideal for frequently accessed items or decorative displays. Store toiletries, books, kitchen essentials, or aromatherapy items for easy reach.





Image 3.1: Close-up of the open shelving area, demonstrating potential for organizing various items.

3.2 Adjustable Shelves

The shelves within the closed compartments are adjustable. To change the shelf height:

1. Empty the shelf of all contents.
2. Carefully lift the shelf and remove the support pins from their current holes.
3. Reinsert the support pins into the desired new set of holes. Ensure they are level.
4. Place the shelf back onto the support pins.



Image 3.2: Visual representation of the adjustable shelf feature, showing how shelves can be repositioned.

3.3 Placement Recommendations

- **Bathroom:** Ideal for storing toiletries, towels, and cleaning supplies.
- **Kitchen:** Suitable for pantry items, dishes, small appliances, or cookbooks.
- **Office/Living Room:** Can function as a bookshelf, display cabinet, or general storage for office supplies and decorative items.
- **Storage Room:** Excellent for organizing various household necessities.



Image 3.3: The cabinet integrated into a kitchen environment, showcasing its utility for storing kitchenware and appliances.



Image 3.4: The cabinet placed in a living room, illustrating its use for displaying decorative items and storing books.

4. MAINTENANCE

To ensure the longevity and appearance of your FirFurd cabinet, follow these maintenance guidelines:

- **Cleaning:** The cabinet's surface is waterproof and easy to clean. Wipe regularly with a soft, damp cloth. For stubborn marks, use a mild, non-abrasive cleaner. Dry immediately with a clean cloth.
- **Avoid Harsh Chemicals:** Do not use abrasive cleaners, solvents, or strong chemical agents, as these can damage the finish.
- **Spills:** Promptly wipe up any spills to prevent water damage or staining.
- **Inspection:** Periodically check all hardware connections (screws, bolts) and tighten if necessary to maintain structural integrity.

5. TROUBLESHOOTING

This section addresses common issues you might encounter with your FirFurd cabinet.

5.1 Cabinet Instability

- **Issue:** The cabinet feels wobbly or unstable.
- **Solution:** Ensure all assembly screws and bolts are securely tightened. Verify that the cabinet is placed on a level surface. If the floor is uneven, use shims under the base to stabilize it. Confirm the anti-tipping device is correctly installed and anchored to the wall.

5.2 Doors Not Closing Properly

- **Issue:** Cabinet doors do not close flush or stay shut.
- **Solution:** Check if the magnetic catches are properly aligned and securely attached. Adjust the hinges if necessary, following the instructions in the assembly manual. Ensure no items inside the cabinet are obstructing the door's closure.

5.3 Missing or Damaged Parts

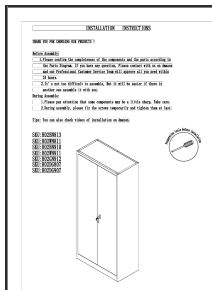
- **Issue:** Parts are missing or damaged upon delivery.
- **Solution:** Do not proceed with assembly. Contact customer support immediately with your purchase details and a description of the missing or damaged components.

6. SPECIFICATIONS

Attribute	Detail
Brand	FirFurd
Model	Tall Multifunctional Storage Cabinet
Color	Black
Material	Wood, Metal
Product Dimensions (D x W x H)	40 cm x 60 cm x 180.5 cm (15.7 in x 23.6 in x 71.1 in)
Mounting Type	Floor Mount
Recommended Room Type	Bathroom, Kitchen, Office, Storage Room
Door Style	Flat Panel
Weight Limit	80 Kilograms (176 lbs)
Included Components	Storage Cabinet
Finish Type	Lacquered

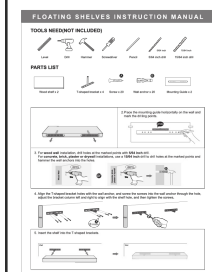
7. WARRANTY AND SUPPORT

For warranty information or technical support, please refer to the documentation included with your purchase or contact the retailer from whom you purchased the product. Please have your purchase receipt and product model information ready when contacting support.



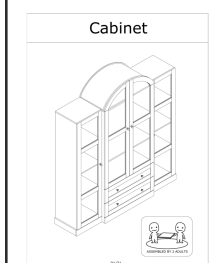
Installation Instructions for Tall Metal Storage Cabinet

Step-by-step assembly guide for the INTERGREAT Tall Metal Storage Cabinet with 4 adjustable shelves and 2 locking doors. Includes parts list and assembly diagrams.



[Floating Shelves Instruction Manual and Warranty Information](#)

This document provides instructions for installing floating shelves and details the two-year limited warranty provided by the manufacturer. It includes a parts list, step-by-step installation guides, and important safety warnings.



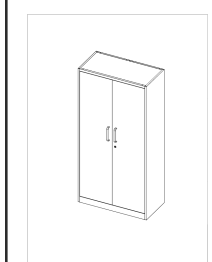
Assembly Instructions for 72.4" Tall Arched Storage Cabinet

Detailed assembly instructions for a 72.4" tall arched storage cabinet with glass doors and adjustable shelves. Includes parts list, tools required, and step-by-step guidance for assembly.



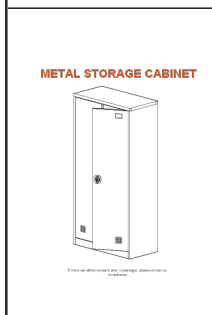
Storage Cabinet Assembly Instructions - Rosecliff Heights

Detailed step-by-step assembly instructions for the Rosecliff Heights Storage Cabinet, including safety advice, parts list, and care information. Model: rkaw4070, FL2799.



PEUKC Metal Garage Storage Cabinet Assembly Instructions

Detailed assembly instructions for the PEUKC Metal Garage Storage Cabinet, a 71-inch tall cabinet with adjustable shelves and locking doors. Includes a list of parts and step-by-step guidance for assembly.



EazeHome Metal Storage Cabinet Assembly Instructions

Comprehensive assembly instructions and user guide for the EazeHome Metal Storage Cabinet. This document details all parts, step-by-step assembly procedures, important notes, and safety warnings to ensure proper installation and use of the metal storage cabinet.

