

## Manuals+

[Q & A](#) | [Deep Search](#) | [Upload](#)

[manuals.plus](#) /

› [Inefala](#) /

› [Inefala 4G 64G Car Stereo User Manual for Ford Fusion Mondeo 2013-2019](#)

## Inefala 4G 64G

# Inefala 4G 64G Car Stereo User Manual

Model: 4G 64G | For Ford Fusion Mondeo 2013-2019

## 1. INTRODUCTION

---

This manual provides detailed instructions for the installation, operation, and maintenance of your Inefala 4G 64G Android 15 Car Stereo. Please read this manual thoroughly before installation and use to ensure proper function and to maximize your user experience. Keep this manual for future reference.

## 2. PRODUCT OVERVIEW & PACKAGE CONTENTS

---

The Inefala 4G 64G Car Stereo is an advanced in-dash navigation system designed for Ford Fusion Mondeo models from 2013 to 2019. It features a 9-inch Incell touchscreen, Android 15 operating system, wireless CarPlay and Android Auto, Bluetooth 5.0, GPS navigation, and support for a backup camera.

### Package Contents:

- (Manual A/C) for Ford Fusion Mondeo Android Radio
- 1 x Power Cable
- 1 x CANBUS Decoder
- 1 x Original USB Cable
- 1 x Radio Antenna Cable
- 1 x RCA Harness
- 1 x GPS Antenna
- 1 x Rear Camera Input Cable
- 2 x USB Cables
- 1 x AHD Backup Camera
- 1 x External Microphone
- 1 x Installation Tool & Accessories

# Product Specifications

System:	Latest Android System
Screen Resolution:	1280*720 Incell Screen
Power Output:	4*45W
Bluetooth Version:	5.0
Steering Wheel Control Function:	Support
Radio Band:	FM / RDS
Rear Camera Standard:	AHD & CVBS
External Microphone:	Support
Split Screen:	Support
WiFi:	Support
Carplay / Android Auto:	Wireless connection only
Mirror Link:	Wireless / Wired
USB:	Double USB interface
Audio Format:	APE / FLAC / WAV / MP3 / WMA etc
Video Format:	MKV / RMVB / AVI / MP4 / MDV etc
Picture Format:	PNG / JPEG / JPG / GIF / WBMP / BNP etc
Factory Setting Keyword:	1234
Maps:	Built-in online & offline maps (requires internet to download data)
Language:	English / Spanish / Chinese / French / Italian / Korean Japanese / Arabic / Portuguese / Russian / Turkish Vietnamese / Hebrew / Polish / German

Figure 2.1: Package Contents and Unit Dimensions

## 3. COMPATIBILITY & IMPORTANT NOTES

This car stereo is specifically designed for Ford Fusion Mondeo models manufactured between 2013 and 2019. Please verify your vehicle's model year before installation.

- **Original A/C Board:** The cable does NOT support original cars equipped with a large screen. The plug of the original A/C board must be reconnected to the original car, and the protocol set to match the car model for the A/C function to be effective. Refer to the installation instructions for details.
- **Power Amplifier:** If your vehicle has a stock power amplifier and you experience no sound, connect the AMP control wire from the original plug to the ACC wire of our power cable.

# In-Cell Touch Screen

Adopting a touch display integrated screen makes the screen thinner and the display brighter.



Figure 3.1: Installation Effect and Compatibility Check

## 4. INSTALLATION GUIDE

Professional installation is recommended. Ensure the vehicle's battery is disconnected before starting the installation process to prevent electrical damage.

### 4.1 Pre-Installation Check:

1. Combine the red and yellow wires of the car stereo, then connect them to the positive pole of the 12V battery. Connect the black wire to the negative pole of the battery.
2. After 2 seconds, check the car stereo. If the screen lights up, it means the car stereo is functioning normally. If it does not work after installation, recheck the installation procedure.

### 4.2 Physical Installation Steps:

1. Loosen the four screws fixing the hardware at the back of the host unit. Then, unplug the corresponding motherboard connector cables.



Figure 4.1: Disassembly of Host Unit

2. Secure the bracket and iron plate to the back of the host with screws. Connect the extension cable, and then assemble another iron plate onto the back of the host, joining it with the first one.

## Installation tips & How to reach us?

### A quick test before installation:

1. The red and yellow wires of the car stereo are combined first, then connected to the positive pole of the 12V battery. The black wire is connected to the negative pole of the battery.
2. After 2 seconds, check the car stereo, if the screen lights up, it means that the car stereo is functioning normally. If you test that the car player turns on, but the device does not work after installation, recheck the installation procedure.

### Warm tips:

1. Please double-check that the power cable port we provide matches the port of your car
2. No need to connect the all sockets if they don't fit, because the harness may contains spare sockets to match different car model years
3. If the wiring harness is different or the accessories are missing or damaged, please refer them to our CS Department for processing, and we will resend them for you

### STEP 1

[Add to Cart](#)  
[Buy Now](#)

Ships from [Amazon](#)  
Sold by [Inefala Direct](#)  
Returns [30-day replacement](#)  
Support [Product support included](#)

**About Seller**  
Welcome to Inefala store

**Why Choose Us?**

- Professional Technical Support Team & Customer Service Team to ensure your shopping experience.
- If you encounter any difficulties or doubts in installing or using the products of our store, you can contact our sellers (Inefala) through the Amazon platform or contact our customer service team by email: [inefaloservices@163.com](mailto:inefaloservices@163.com)
- All messages will be replied within 24 HOURS, regardless of holidays.
- **One Year Warranty**, from the beginning to the end of the cus...

[See more](#) ▾

### How to reach us:

Step 1: Click "Inefala Direct"  
Step 2: Click "Ask a question"  
Step 3: Please send us questions you met, and attach relevant pictures or videos will help to solve the problem faster!

### STEP 2

Have a question for Inefala Direct?  
[Ask a question](#)

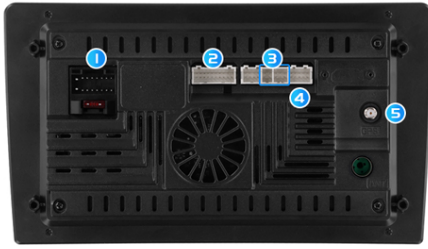
Figure 4.2: Bracket and Plate Assembly

3. Attach the two iron plates together on both sides using screws. Connect the cables to the motherboard, and finally tighten the hardware screws on the back of the host.

## 4.3 Wiring Connections:

Ensure all connections are secure and correctly matched to your vehicle's wiring harness. If the harness contains spare sockets that do not fit, no connection is needed as they may be for different car model years.

## Port Details



- |               |                |
|---------------|----------------|
| 1.Power Cable | 4.Camera Input |
| 2.RCA Cable   | 5.GPA Antenna  |
| 3.USB Cable   |                |

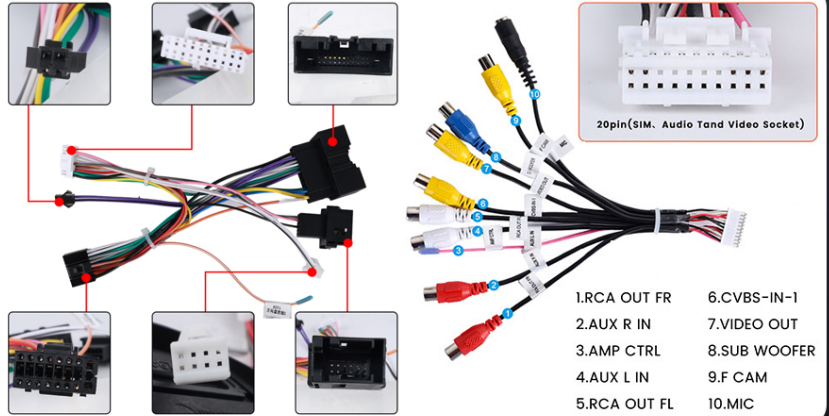


Figure 4.3: Port Details and Wiring Diagram

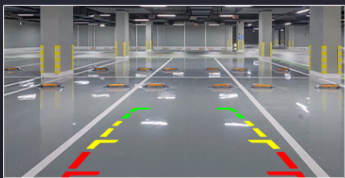
### Backup Camera Wiring:

The reversing input must be plugged in even if the reversing camera is not used. Otherwise, your WiFi and Bluetooth signals may be affected.

- **Cable 1 and Cable 5:** Connect the positive pole of the car reversing light cable.
- **Cable 2:** Connect the negative pole of the car reversing light cable.
- **Cable 3 and Cable 4:** Connects to the reverse trigger wire of the power cable (labeled 'Reverse/Back'). No need to connect if without this wire. Pull it out and connect it if the last step doesn't work.

## Reversing Camera Wiring

Tip: The reversing input must be plugged in even when the reversing camera is not used. Otherwise, your WiFi and Bluetooth signals will be affected!



- Wide Angle
- IP69 Waterproof
- HD 720P
- Night Vision

### How to Connect the Backup Camera?

- Cable 1 and cable 5: Need connect the positive pole of the car reversing light cable.
- Cable 2: Connect the negative pole of the car reversing light cable.
- Cable 3 and Cable 4: Connects to the reverse trigger wire of power cable (labeled "Reverse/Back"). No need to connect if without this wire. Pull it out and connect it if last step doesn't work.

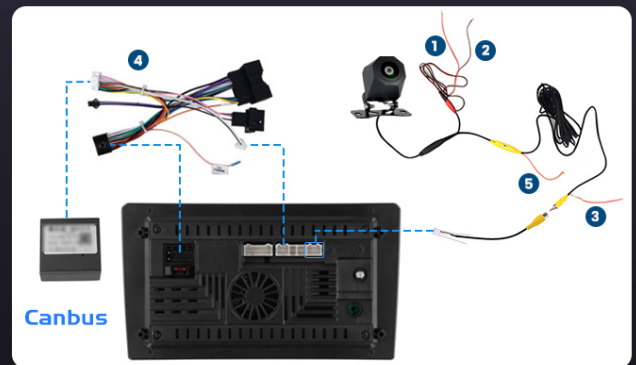


Figure 4.4: Backup Camera Wiring Diagram

## 5. OPERATING INSTRUCTIONS

### 5.1 Touchscreen & Display:

The 9-inch Incell touchscreen features a 1280 x 720 ultra-high resolution, offering improved light transmission, color contrast, and a 178° viewing angle. It supports split-screen functionality and 1080P video playback. You can switch between 15 different desktop themes.

# Wireless Carplay & Android Auto

CarPlay/Android Auto automatically connect to the car player via BT providing a safe and pleasant driving experience.



Carplay

Android Auto



**Note:** For Huawei and some Samsung phones, these are not supported. The phone needs to support Google Services and install the "Android Auto" app.

Figure 5.1: In-Cell Touch Screen Features

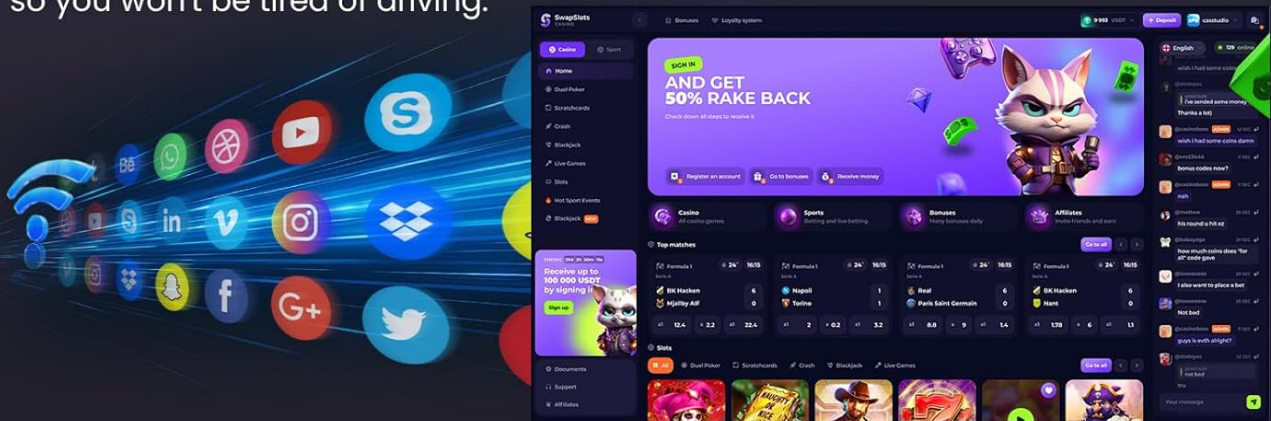
## 5.2 Wireless CarPlay & Android Auto:

Connect wirelessly for voice-assisted controls and easy access to your phone's music, navigation, calls, and messages. Syncs to the onboard screen via WiFi hotspot or your phone's original USB cable.

- **Note:** Some Samsung and Huawei phones may not support Android Auto and Mirror Link. Your phone needs to support Google Services and have the "Android Auto" app installed.

# WiFi Funtion

High-speed Internet access, download apps, shop online, and play music. so you won't be tired of driving.



# GPS Navigation

Supports online and offline GPS. Real-time road conditions help avoid traffic jams. Accurate satellite positioning prevents you getting lost.

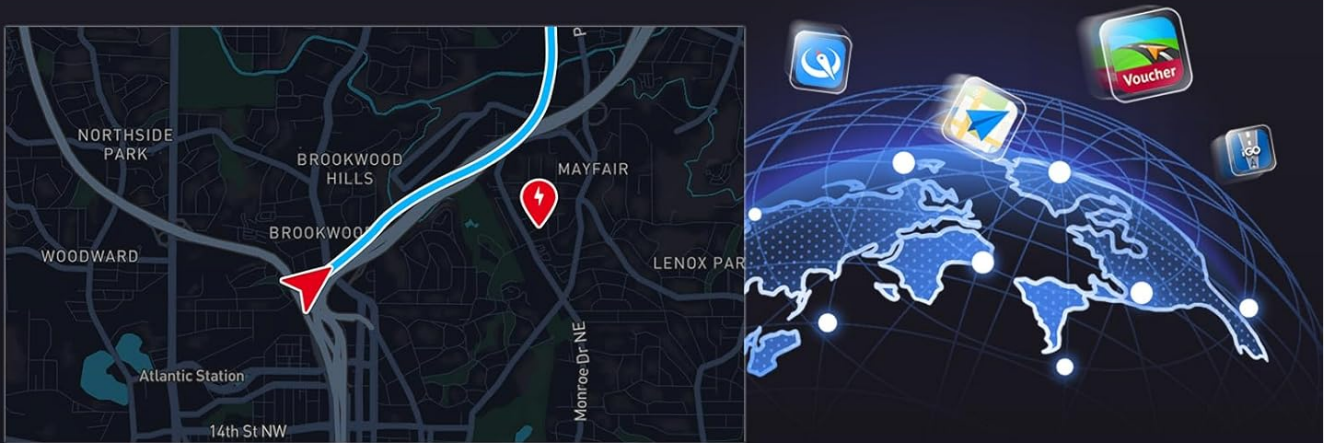


Figure 5.2: Wireless CarPlay & Android Auto Interface

## 5.3 GPS Navigation:

The unit supports both online and offline navigation. Satellite navigation supports GPS/BeiDou/Galileo/Glonass for wide coverage and accurate positioning. Connect to a WiFi hotspot to download online maps.



Figure 5.3: WiFi Function and GPS Navigation

## 5.4 Bluetooth 5.0:

Bluetooth 5.0 enables hands-free calling, phone book download, and music playback, enhancing safety while driving.

## 5.5 FM/RDS Radio:

The stable FM/RDS radio allows you to preset up to 54 stations, providing access to channel broadcasts, weather forecasts, and real-time road conditions.

## 5.6 Steering Wheel Control:

The system supports steering wheel button functions, allowing easy control of the car audio system while driving.

- **Without CANBUS box:** Activation of steering wheel controls requires key learning in settings.
- **With CANBUS box:**
  - i. Connect the 20-pin white port in the power cable to the Canbus itself.

- ii. Connect the remaining 8-pin white port to the corresponding port on the back of the radio.
- iii. Match the car model: CANBUS Matching Path: Settings -> Factory Setup (Password 1234) -> Can Settings.

## Steering Wheel Control



**Optional Note:**

- a.If no CANBUS box: Activation of steering wheel controls requires key learning in settings .
- b.If with CANBUS box: (1).Need to connect the 20-pin white port in the power cable to the Canbus itself, and the remaining 8-pin white port to the corresponding port on the back of the radio.
- (2).Match the car model. CANBUS Matching Path: Settings - Factory Setup (Password 1234) - Can Settings.

Figure 5.4: Steering Wheel Control Setup

## 6. SPECIFICATIONS

---

Feature	Description
System	Latest Android System (Android 15)
Screen Resolution	1280*720 Incell Screen
Power Output	4*45W
Bluetooth Version	5.0
Steering Wheel Control Function	Support
Radio Band	FM / RDS
Rear Camera Standard	AHD & CVBS
External Microphone	Support
Split Screen	Support
WiFi	Support
Carplay / Android Auto	Wireless connection only
Mirror Link	Wireless / Wired
USB	Double USB interface
Audio Format	APE / FLAC / WAV / MP3 / MP4 / MDV etc.
Video Format	MKV / RMVB / AVI / MP4 / MDV etc.
Picture Format	PNG / JPEG / JPG / GIF / WBMP / BNP etc.
Factory Setting Keyword	1234
Maps	Built-in online & offline maps (requires internet to download data)
Language	English / Spanish / Chinese / French / Italian / Korean / Japanese / Arabic / Portuguese / Russian / Turkish / Vietnamese / Hebrew / Polish / German

## 7. TROUBLESHOOTING

---

If you encounter issues, please refer to the following common solutions:

- **No Sound:** If your vehicle has a stock power amplifier, ensure the AMP control wire from the original plug is connected to the ACC wire of our power cable.
- **WiFi/Bluetooth Signal Issues:** Ensure the reversing input cable is plugged in, even if a backup camera is not used.
- **CarPlay/Android Auto Not Working:** Verify your phone supports Google Services and has the "Android Auto" app installed. Some Samsung and Huawei models may have compatibility limitations.
- **A/C Function Ineffective:** Ensure the plug of the original A/C board is reconnected to the original car and the protocol is set to match your car model.
- **Installation Difficulties:** Double-check the power cable port matches your car. If the harness has spare sockets that don't fit, they are not needed. If wiring is damaged or accessories are missing, contact customer service.

## 8. MAINTENANCE

---

To ensure the longevity and optimal performance of your car stereo, follow these maintenance guidelines:

- **Cleaning the Screen:** Use a soft, lint-free cloth to gently wipe the touchscreen. For stubborn smudges, slightly dampen the cloth with water or a screen-safe cleaner. Avoid harsh chemicals or abrasive materials.
- **Software Updates:** Periodically check for software updates through the system settings to ensure you have the latest features and bug fixes.
- **Avoid Extreme Temperatures:** Do not expose the unit to extreme heat or cold for extended periods, as this can affect performance and lifespan.

## 9. WARRANTY & SUPPORT

---

Your Inefala car stereo comes with a **1-Year Warranty** from the date of purchase.

### Customer Support:

For any technical assistance, installation queries, or warranty claims, please contact Inefala customer service. We offer professional technical support and customer service to ensure your shopping experience.

#### How to reach us:

1. Go to the product page on Amazon.
2. Click on the seller name (e.g., "Inefala Direct").
3. Click "Ask a question" to send us your questions, and attach relevant pictures or videos.

All messages will be replied to within 24 hours, regardless of holidays.



Figure 9.1: Inefala Customer Support Contact