



Manuals.plus /

- › Kewig /
- › Kewig Motorcycle Battery Charger and USB Charger Instruction Manual

## Kewig B0DCVWD3H5

# Kewig Motorcycle Battery Charger and USB Charger Instruction Manual

Model: B0DCVWD3H5

## 1. PRODUCT OVERVIEW

---

The Kewig Motorcycle Battery Charger and USB Charger is a versatile device designed for motorcycle touring. It supports bidirectional charging, allowing it to charge both your mobile devices and your motorcycle battery. Featuring dual PD Type-C and QC 3.0 ports, it offers fast charging capabilities up to 100W. An integrated LED voltmeter provides real-time battery voltage monitoring.

# QC3.0 & PD Quick Charger

Super Fast Charger your Devices



Image 1.1: The Kewig Motorcycle Battery Charger and USB Charger main unit, showcasing its compact design and ports.

Your browser does not support the video tag.

Video 1.1: A general overview and demonstration of the Kewig Motorcycle Battery Charger's features and usage.

## 2. SAFETY INFORMATION

This product is designed with multiple safety features to ensure reliable operation. Always follow these guidelines:

- Ensure all waterproof connectors are securely connected and tightened before connecting the unit to the motorcycle battery.
- Connect the red terminal to the positive pole and the black terminal to the negative pole of the battery. Incorrect polarity can damage the device or battery.
- The yellow ACC line must be connected to an ignition-activated power source for proper output functionality.

- Do not attempt to disassemble or modify the charger.
- Keep the device away from extreme temperatures and direct sunlight.

The charger incorporates intelligent charging chips, a fuse box, and graphene cooling technology for protection against short circuits, overheating, overcurrent, overcharging, over-voltage, and under-voltage.



Image 2.1: Visual representation of the security protection features, including over-heat, over-current, over-voltage, over-load, short-circuit, and under-voltage protection.

### 3. PACKAGE CONTENTS

The package typically includes:

- Kewig Motorcycle Battery Charger and USB Charger unit
- SAE cable with red, yellow (ACC), and black terminals
- Handlebar mounting base

- Rearview mirror mounting base
- Installation hardware (screws, etc.)

## 4. INSTALLATION

### 4.1 Wiring Connection

Follow these steps to connect the charger to your motorcycle battery:

1. Connect the **red terminal** of the SAE cable to the **positive pole (+)** of your motorcycle battery.
2. Connect the **yellow line** to the **ACC (Accessory)** power source. The ACC is a position where the entire vehicle can be powered off with the ignition key off. This ensures the charger only operates when the motorcycle is on, preventing battery drain.
3. Connect the **black terminal** to the **negative pole (-)** of the battery.
4. Ensure all waterproof connectors on the cable are securely connected and tightened before connecting the battery terminals.

After powering on, the digital tube on the charger will display the battery voltage.

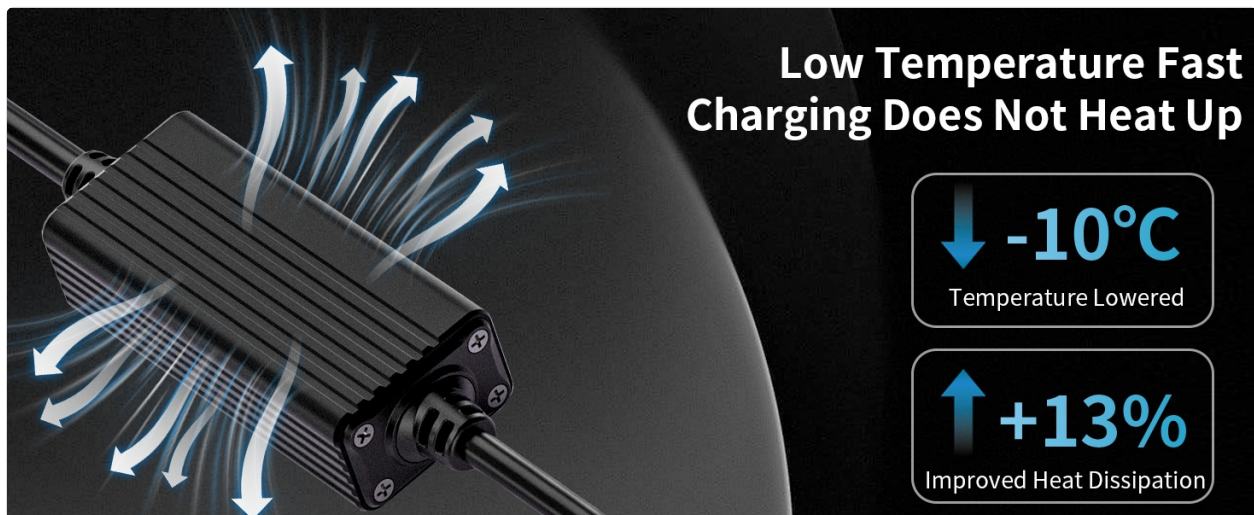


Image 4.1: Detailed wiring instructions showing connections to the motorcycle battery and ACC line.

### 4.2 Mounting Methods

The charger offers two installation methods:

- **Handlebar Installation:** Use the handlebar base for mounting on handlebars with a diameter of 22mm/0.866 inches.
- **Rearview Mirror Installation:** Use the rearview mirror base to attach the charger near your motorcycle's rearview mirror.

## 2 Installation Methods

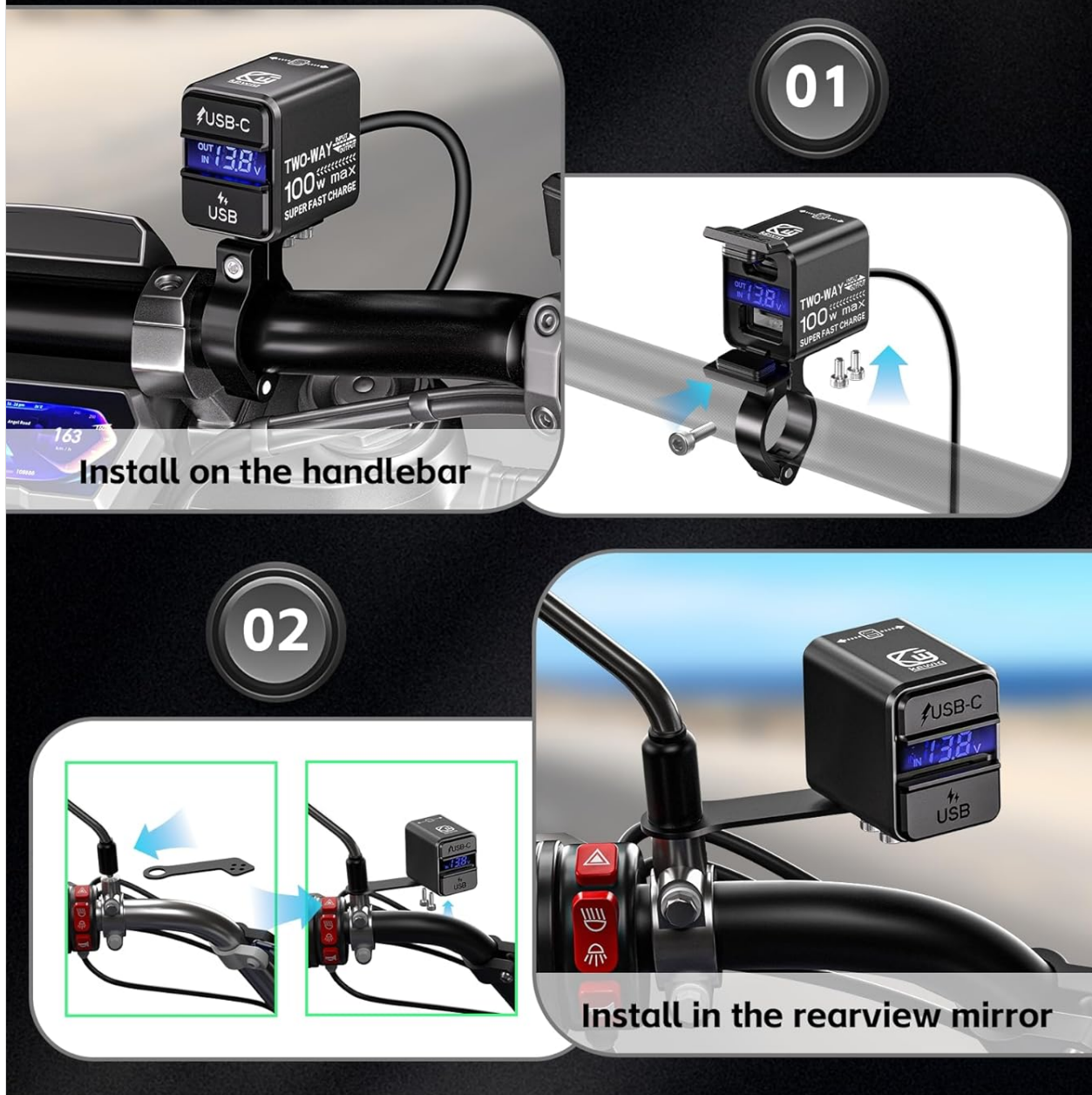


Image 4.2: Illustrations of the two available installation methods: on the handlebar and in the rearview mirror area.

## 5. OPERATION

### 5.1 Bidirectional Charging

The charger supports two-way functionality:

- **Charging Motorcycle Battery (Input Mode):** When the PD Type-C port is used as an input, you can connect a phone charger or power bank to charge your motorcycle battery. The LED digital tube will display "IN", indicating the motorcycle battery is being charged at up to 100W. This is suitable for 12V lead-acid batteries (maintenance-free, AGM) and 12V lithium iron phosphate batteries.
- **Charging Mobile Devices (Output Mode):** When the PD Type-C and USB ports are used as outputs, you can charge phones, action cameras, and other devices. The LED digital tube will display "OUT".



Image 5.1: The charger demonstrating its bidirectional capability, charging a motorcycle battery from a power bank and charging a phone.

## 5.2 Dual-Port Output

The charger features two output ports:

- **PD Type-C Output:** Supports PD fast charging technology with power up to 100W. Compatible with mobile devices, computers, cameras, and drones that support fast charging protocols.
- **USB Output:** Utilizes QC3.0 fast charging technology, providing up to 22.5W. Can charge a mobile phone to 90% in approximately 30 minutes.

**Note:** When both ports are outputting simultaneously, fast charging is not supported, and the combined power output is 5V-3A (15W Max). The LED digital tube will display "OUT".



Image 5.2: The charger simultaneously charging two mobile devices via its USB-A and USB-C ports.

## 5.3 LED Voltmeter

The integrated LED voltage display screen allows you to monitor your motorcycle's battery voltage. It automatically tracks the battery and electrical system, helping to prevent power consumption issues. When the charger is in input mode (charging the motorcycle battery), the display shows "IN" and the voltage. In output mode (charging devices), it shows "OUT" and the voltage.

## Materials & Displays



Image 5.3: Close-up of the charger's LED display, indicating 'IN' when charging the motorcycle battery and 'OUT' when charging external devices.

Your browser does not support the video tag.

Video 5.1: A demonstration of the charger's operational modes, including device charging and battery charging.

## 6. MAINTENANCE

The Kewig Motorcycle Battery Charger is designed for durability and resistance to environmental factors:

- **Waterproof and Dustproof:** The charger body is made of aluminum alloy with a CNC process, and the cable interface supports quick disconnection. It features an IP66 waterproof and dust cover design to protect against water and dust ingress.
- Regularly check that the dust cover is properly seated over the ports when not in use to maintain its waterproof and dustproof integrity.
- Clean the exterior of the charger with a soft, dry cloth. Do not use abrasive cleaners or solvents.

# Waterproof & Dustproof Cap

Prevent water or dust inside of the port

## Dustproof



## Waterproof



Image 6.1: Visual representation of the charger's waterproof and dustproof cap, highlighting its protective design.

## 7. TROUBLESHOOTING

If you encounter issues with your Kewig Motorcycle Battery Charger, consider the following:

- **No Output to Phone/Devices:** Ensure the yellow ACC wire is correctly connected to an ignition-activated power source. If the ACC wire is not connected, the USB-C port may not provide output functionality for charging devices.
- **Charger Not Functioning:** Verify that the red and black terminals are securely connected to the correct battery poles. Check all waterproof connectors for proper seating.
- **LED Display Not On:** Confirm the charger is properly connected to the motorcycle battery and the ignition is on (if ACC is connected).
- **Slow Charging:** If both USB-C and USB-A ports are used simultaneously, the charging speed will be reduced to 5V-3A (15W Max). For faster charging, use one port at a time.

- **Overheating:** The device has intelligent temperature control and graphene cooling. If it feels excessively hot, disconnect it and allow it to cool. Ensure it is not obstructed or in direct sunlight during operation.

## 8. SPECIFICATIONS

Feature	Specification
Product Dimensions	1.41 x 1.02 x 1.33 inches
Item Weight	12.3 ounces
Input Voltage (Motorcycle Battery)	DC 12V-14.8V
Output Voltage (DC)	12 Volts
Type-C Input	5V/3A; 9V/3A; 12V/3A; 15V/3A; 20V/5A (100W Max)
Type-C Output	5V/3A; 9V/3A; 12V/3A; 15V/3A; 20V/5A (100W Max)
USB-A Output	5V/3A; 9V/2.5A; 12V/1.8A (22.5W Max)
USB-C + USB-A Simultaneous Output	5V/3A (15W Max)
Compatibility (Battery Charging)	12V Pb-A lead-acid batteries (maintenance-free, AGM), 12V LFP lithium iron phosphate batteries
Installation Diameter (Handlebar)	22mm / 0.866 inches
Waterproof Rating	IP66

## 9. WARRANTY AND SUPPORT

Specific warranty details are not provided in the product information. For warranty claims or technical support, please refer to the retailer's return policy or contact Kewig customer service directly through their official channels or the platform where the product was purchased.