



Manuals.plus /

› MIZISNR /

› MIZISNR IME-6000 Wireless In-Ear Monitor System User Manual

## MIZISNR IME-6000

# MIZISNR IME-6000 Wireless In-Ear Monitor System User Manual

Model: IME-6000 | Brand: MIZISNR

---

## 1. INTRODUCTION

---

The MIZISNR IME-6000 is a professional 2-channel wireless in-ear monitor system designed for musicians, bands, and stage or studio environments. It features UHF wireless technology for stable signal transmission, flexible frequency options, and a durable design for reliable performance. This manual provides comprehensive instructions for setting up, operating, maintaining, and troubleshooting your system.



Image 1.1: The MIZISNR IME-6000 Wireless In-Ear Monitor System, showcasing the transmitter and bodypacks.

## 2. Box CONTENTS

Verify that all items listed below are included in your package:

- 1 x Wireless IEM Transmitter
- 6 x Bodypack Receivers
- 6 x In-Ear Earphones
- 1 x Power Adapter
- 2 x Antennas
- 1 x User Manual

# PACKAGE LIST



Wireless Desktop Transmitter x1



Enhanced Antenna x2



Earbuds x6



In Ear Headphones x6



6.35mm Audio Cable x2



Wireless Bodypack Receiver x6



Power Adapter x1



Instruction manual x1

Image 2.1: Visual representation of all components included in the MIZISNR IME-6000 package.

## 3. PRODUCT OVERVIEW

### 3.1 Wireless Desktop Transmitter

# WIRELESS DESKTOP TRANSMITTER

UHF ~ Delay-free

2x40 ~ Selectable Frequencies

330ft ~ Wireless Range

520-580Mhz ~ Frequency Range

±0.005% ~ Frequency Stability

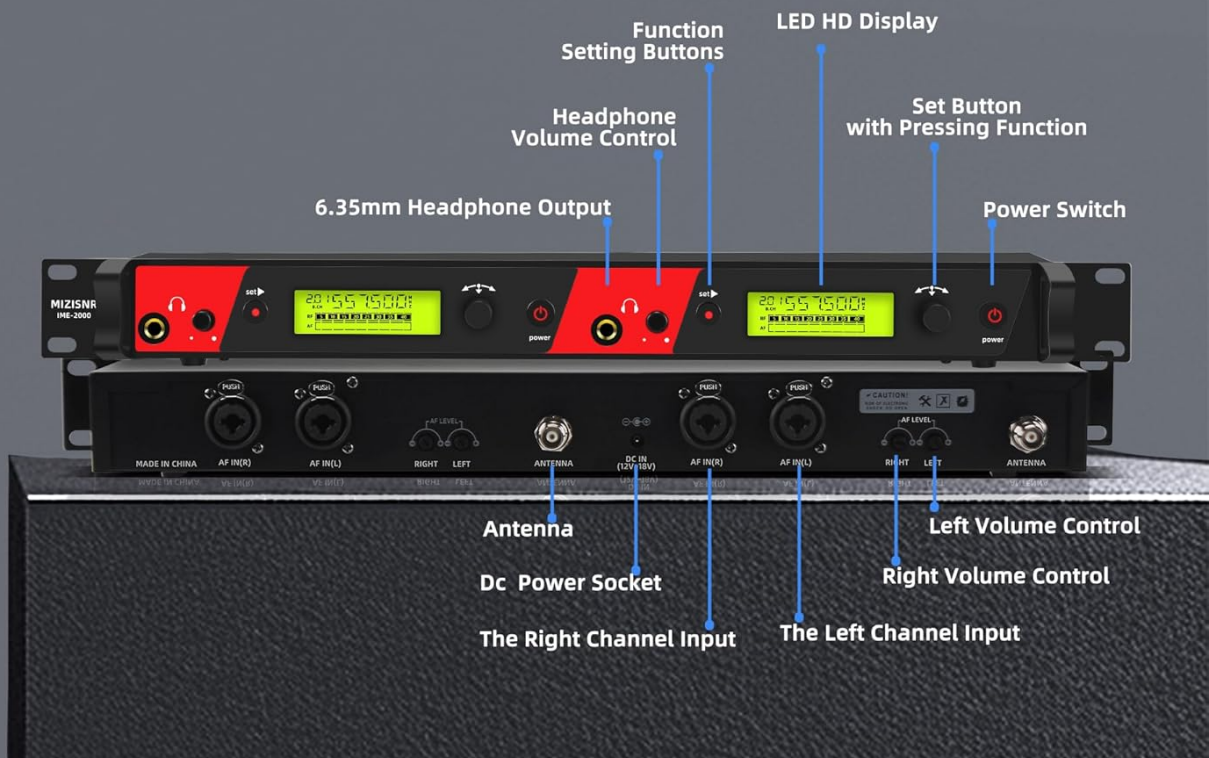



Image 3.1: Detailed view of the Wireless Desktop Transmitter, highlighting its front and rear panel controls and connections.

- **LED HD Display:** Shows frequency, channel, and other operational information.
- **Function Setting Buttons:** Used to navigate menus and adjust settings.
- **Set Button with Pressing Function:** Confirms selections and activates IR sync.
- **Headphone Volume Control:** Adjusts the volume for the monitor headphone output.
- **6.35mm Headphone Output:** For direct monitoring from the transmitter.
- **Power Switch:** Turns the transmitter on or off.
- **Antenna Connectors:** For attaching the included antennas.
- **DC Power Socket:** Connects to the power adapter.
- **Right/Left Channel Inputs (AF IN R/L):** XLR/TRS combo jacks for audio input.
- **Left/Right Volume Control:** Adjusts input gain for each channel.

## 3.2 Wireless Portable Receiver (Bodypack)

# WIRELESS PORTABLE RECEIVER

 ~ Beginner-friendly

 ~ In-Ear Monitoring

 ~ Battery Indicator

 ~ Individual Adjustment



Image 3.2: Detailed view of the Wireless Portable Receiver (Bodypack), showing battery compartment, display, and controls.

- **Antenna:** For receiving the wireless signal.
- **LED HD Display:** Shows frequency, channel, battery status, and RF signal.
- **Low Voltage Indicator Lamp:** Illuminates when battery power is low.
- **RF Indicator Light:** Illuminates when receiving a strong RF signal.
- **Up/Down Selection Buttons:** Used to adjust frequency or navigate menus.
- **Exit Button (ESC):** Exits current menu or cancels selection.
- **Function Setting Button (SET):** Confirms selections and activates IR sync.
- **Battery Compartment:** Holds 2 x AA batteries (not included).
- **Power Switch & Volume Control:** Turns the bodypack on/off and adjusts headphone volume.
- **Headphone Output:** 3.5mm jack for connecting in-ear earphones.

## 4. SETUP INSTRUCTIONS

Follow these steps to set up your MIZISNR IME-6000 Wireless In-Ear Monitor System:

1. **Connect Antennas:** Screw the two included antennas onto the ANTENNA connectors on the rear panel of the wireless desktop transmitter. Ensure they are securely fastened and positioned vertically for optimal signal reception.
2. **Connect Power:** Plug the power adapter into the DC Power Socket on the rear of the transmitter, then plug the adapter into a suitable power outlet.
3. **Power On Transmitter:** Press the POWER switch on the front panel of the transmitter. The LED HD Display will illuminate.
4. **Frequency Adjustment (Transmitter):**
  - Use the Function Setting Buttons to select the desired frequency group and channel.
  - Press the SET button to confirm.
  - *Note:* For multi-channel setups, ensure each channel on the transmitter is set to a different frequency to avoid interference. The system operates within the 520 MHz-580 MHz frequency range.
5. **Connect Monitor Headphones (Optional):** If you wish to monitor directly from the transmitter, plug a 6.35mm headphone into the Headphone Output jack and adjust the Headphone Volume Control.
6. **Insert Batteries (Bodypack):** Open the battery compartment on each bodypack receiver and insert 2 x AA batteries, observing correct polarity. Close the compartment securely.
7. **Connect Earphones (Bodypack):** Plug the included in-ear earphones into the Headphone Output jack on each bodypack receiver.
8. **Power On Bodypack:** Turn the Power Switch & Volume Control knob on each bodypack receiver clockwise to power it on. The LED HD Display will illuminate.
9. **Frequency Sync (Bodypack):**
  - On the bodypack, press the SET button to activate IR sync mode.
  - Align the IR sensor on the bodypack with the IR sensor on the transmitter (usually near the display). The frequencies should automatically synchronize.
  - Alternatively, you can manually adjust the frequency on the bodypack using the Up/Down Selection Buttons to match the transmitter's frequency.
10. **Connect to Audio Device:** Connect your audio source (e.g., mixer, audio interface) to the Right/Left Channel Inputs (AF IN R/L) on the rear of the transmitter using appropriate XLR or 6.35mm TRS cables. Adjust the Left/Right Volume Control knobs on the transmitter to set the input gain.

## Setup Demonstration Video

Your browser does not support the video tag.

*Video 4.1: A step-by-step guide demonstrating the setup and connection process for the MIZISNR Wireless In-Ear Monitor System.*

## 5. OPERATING INSTRUCTIONS

---

### 5.1 UHF Wireless Technology

The IME-6000 system utilizes UHF (Ultra High Frequency) band with Phase Lock Loop (PLL) technology. This ensures stable signal transmission, minimizes frequency drops, and reduces interference. The built-in limiter circuitry prevents audio distortion at high input levels, maintaining clear, high-fidelity sound with zero latency.

# UHF WIRELESS TECHNOLOGY

LONG RANGE RECEPTION, STABLE TRANSMISSION, NO FREQUENCY BREAK,  
LOW LATENCY, NO DEAD SPOTS.



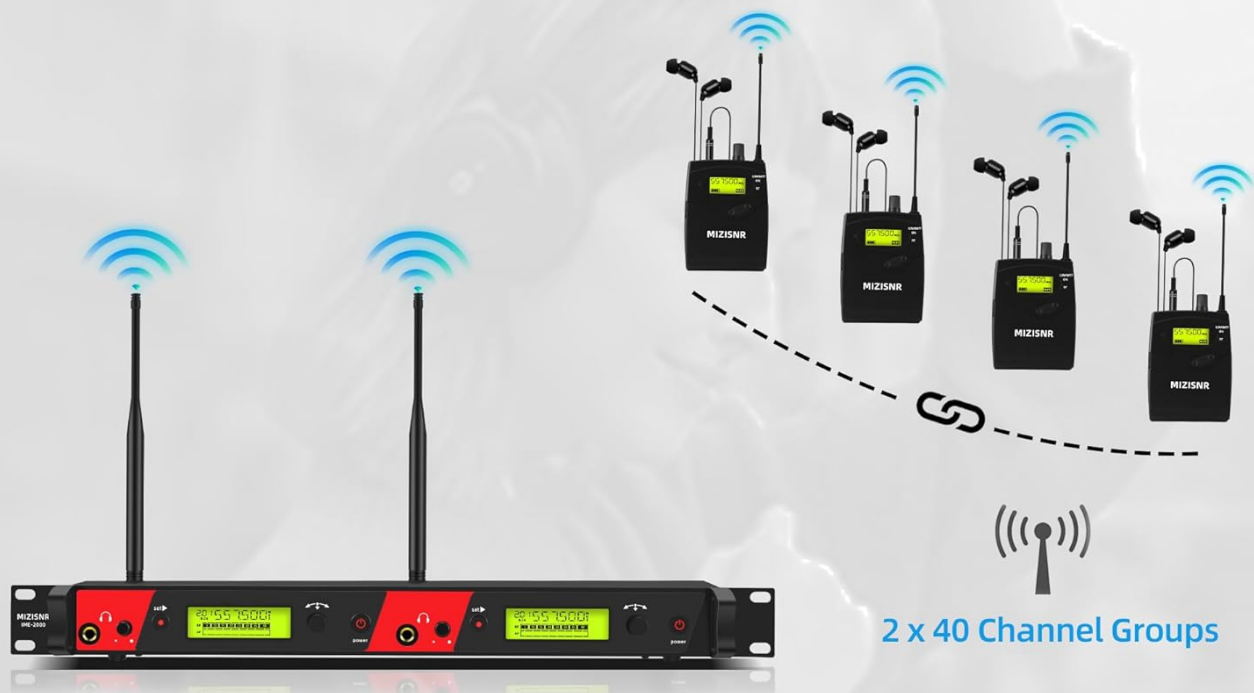
Image 5.1: Illustration of the 330ft (100m) wireless range provided by the UHF wireless technology.

## 5.2 Flexible Frequency Options

The system offers 2x40 preset frequencies within the 32MHz frequency band (520 MHz-580 MHz). This allows for seamless switching to avoid interference. The IR sync feature enables quick connection of multiple receivers to the transmitter.

# SUPPORTS MULTIPLE CONNECTIONS

The monitoring device can be connected to multiple Fanny packs at the same time, and the connection is unlimited.



## Manual Adjustment of the Frequency

**set**  **SET selection:**  
choose setting function

 **DOWN selection:**  
choose setting function

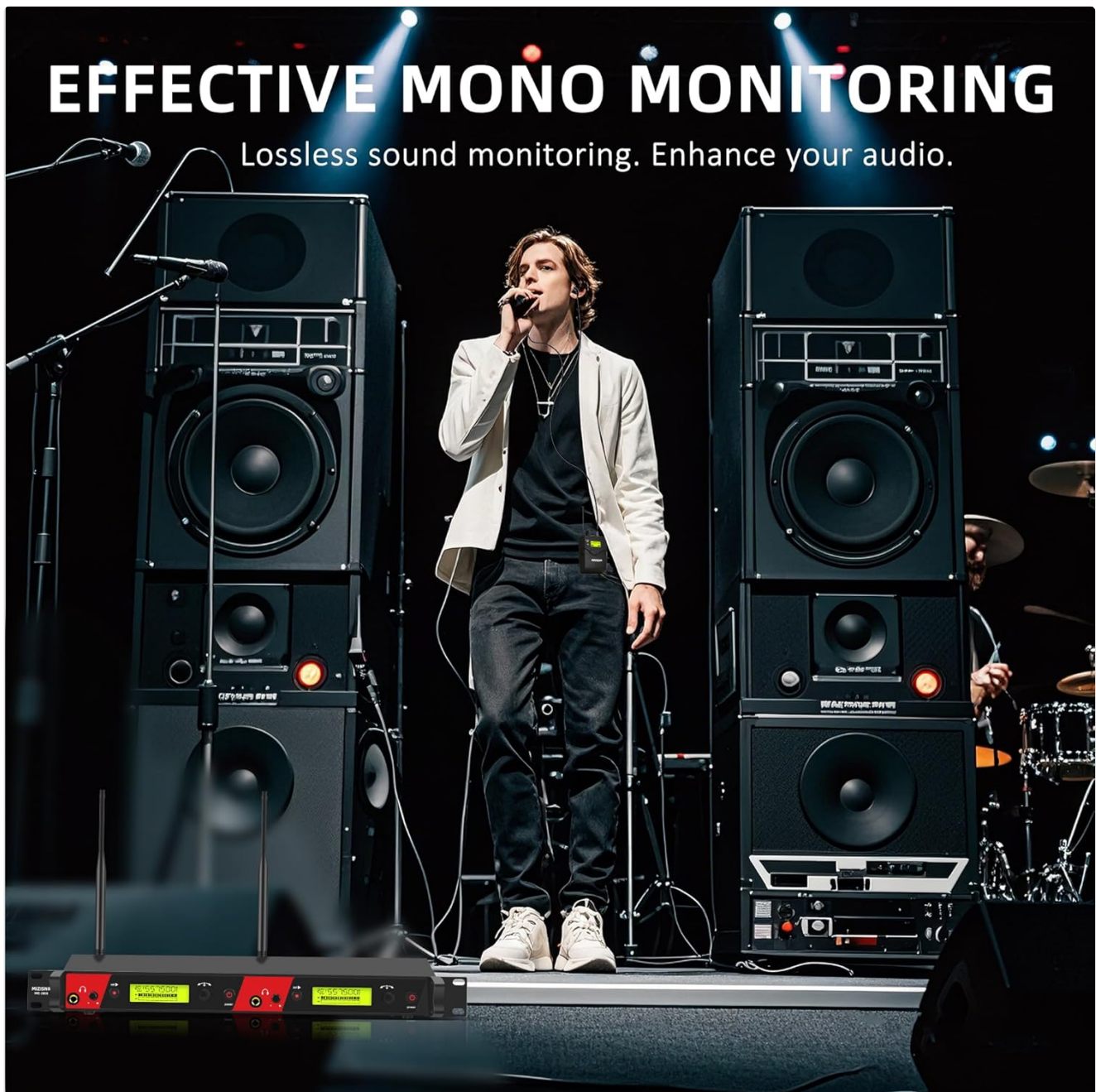
1. Turn on/Turnoff: long press POWER button
2. Group selection: ① SET or press  ② Reverse  to the left or right
3. Channel selection: ① 2xSET or press 2x  ② Reverse  to the left or right

Group	Channel
	

Image 5.2: Diagram showing how multiple bodypack receivers can connect to a single transmitter and manual frequency adjustment options.

## 5.3 Mono Monitoring Experience

The IME-6000 is designed for mono in-ear monitoring, which helps minimize delay, feedback, and ambient noise. Its advanced circuit design ensures a steady receiving signal and avoids blind spots, providing reliable coverage up to 330 feet (100 meters) in open spaces.



*Image 5.3: A musician performing on stage using the MIZISNR In-Ear Monitor System, demonstrating its application in live settings.*

## 5.4 Multi-Scenario Application

The system is suitable for various professional audio environments:

- Live Performances
- Stage Musicians
- Sound Engineers
- Church Bands
- MCs
- Studio Recording
- Band Rehearsals

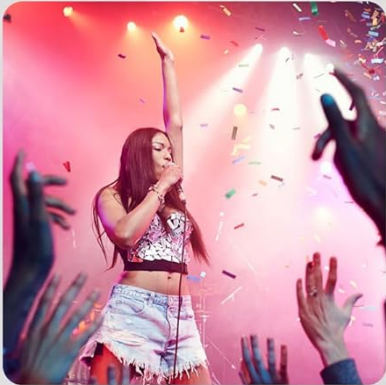
# MULTI-SCENARIO APPLICATION



**Live Singing**



**Band Rehearsal**



**Bar Resident Singer**



**Stage Performance**

*Image 5.4: Examples of multi-scenario applications for the MIZISNR In-Ear Monitor System, including live singing, band rehearsal, and stage performance.*

## 6. MAINTENANCE

Proper maintenance ensures the longevity and optimal performance of your MIZISNR IME-6000 system:

- **Cleaning:** Use a soft, dry cloth to clean the transmitter and bodypacks. Avoid using liquid cleaners or solvents, as they may damage the finish or internal components.
- **Storage:** When not in use, store the system in a cool, dry place away from direct sunlight and extreme temperatures.
- **Battery Care:** Remove batteries from bodypack receivers if the system will not be used for an extended period to prevent leakage. Replace batteries when the low-battery indicator illuminates.
- **Antennas:** Handle antennas carefully to avoid bending or breaking. Ensure they are securely connected during operation.
- **Cables:** Inspect all cables regularly for signs of wear or damage. Replace damaged cables immediately.

## 7. TROUBLESHOOTING

If you encounter issues with your MIZISNR IME-6000 system, refer to the following troubleshooting guide:

Problem	Possible Cause	Solution
No sound from bodypack.	<ul style="list-style-type: none"><li>• Bodypack not powered on.</li><li>• Low or dead batteries in bodypack.</li><li>• Earphones not connected or faulty.</li><li>• Bodypack frequency not matched to transmitter.</li><li>• Transmitter not powered on or no audio input.</li><li>• Volume on bodypack or transmitter too low.</li></ul>	<ul style="list-style-type: none"><li>• Turn on bodypack.</li><li>• Replace batteries.</li><li>• Ensure earphones are fully plugged in and functional.</li><li>• Perform IR sync or manually match frequencies.</li><li>• Ensure transmitter is powered on and receiving audio.</li><li>• Increase volume on both bodypack and transmitter.</li></ul>
Interference or signal drops.	<ul style="list-style-type: none"><li>• Other wireless devices on the same frequency.</li><li>• Obstructions (thick walls, metal, glass).</li><li>• Distance too far from transmitter.</li><li>• Antennas not properly positioned.</li></ul>	<ul style="list-style-type: none"><li>• Change frequency channel on transmitter and bodypack.</li><li>• Relocate transmitter or bodypack to minimize obstructions.</li><li>• Reduce distance between transmitter and bodypack (max 330ft/100m in open space).</li><li>• Ensure antennas are vertical and unobstructed.</li></ul>
Low battery indicator on bodypack.	<ul style="list-style-type: none"><li>• Batteries are running low.</li></ul>	<ul style="list-style-type: none"><li>• Replace with fresh AA batteries.</li></ul>

## 8. SPECIFICATIONS

Detailed technical specifications for the MIZISNR IME-6000 Wireless In-Ear Monitor System:

Feature	Description
Model Name	Wireless in Ear Monitor System
Item Model Number	IME-6000
Brand	MIZISNR
Connectivity Technology	Wireless
Wireless Communication Technology	UHF
Frequency Range	520 MHz-580 MHz
Number of Channels	2 (with 2x40 selectable frequencies)
Wireless Range	Up to 330 feet (100 meters) in open spaces
Transmitter Material	Metal
Bodypack Material	Acrylonitrile Butadiene Styrene (ABS)
Bodypack Power Source	2 x AA Batteries (not included)
Headphones Jack (Transmitter)	6.35 mm Jack
Headphones Jack (Bodypack)	3.5 mm Jack
Control Type	Volume Control, Button
Item Weight	2.61 Kilograms (5.74 pounds)
Product Dimensions	18.9 x 3.85 x 1.9 inches (Transmitter)
Ear Placement	In Ear
Impedance	16 Ohms (Earphones)
Noise Control	None (Passive noise isolation from in-ear design)
Water Resistance Level	Not Water Resistant

# PRODUCT SIZE

You need to know more

✓ Metal frame

✓ Stage sound effects

✓ Widely compatible



Image 8.1: Diagram illustrating the physical dimensions of the wireless desktop transmitter, bodypack receiver, and earphones.

## 9. WARRANTY AND SUPPORT

For warranty information and technical support, please refer to the contact details provided with your purchase or visit the official MIZISNR website. Keep your purchase receipt as proof of purchase for any warranty claims.

**MIZISNR Official Store:** Visit MIZISNR Store on Amazon