

Manuals+

[Q & A](#) | [Deep Search](#) | [Upload](#)

manuals.plus /

- › [DazzlingStage](#) /
- › [DazzlingStage Mini Rechargeable Par Lights ZQ01240 User Manual](#)

DazzlingStage ZQ01240

DazzlingStage Mini Rechargeable Par Lights ZQ01240 User Manual

Model: ZQ01240

1. INTRODUCTION

This manual provides essential information for the safe and efficient operation of your DazzlingStage Mini Rechargeable Par Lights. Please read these instructions thoroughly before use and retain them for future reference.

2. PRODUCT OVERVIEW

The DazzlingStage Mini Rechargeable Par Lights are versatile stage lighting units designed for various events. They feature RGBWA UV 6-in-1 LED lamp beads, offering a wide spectrum of colors and lighting effects. With a built-in high-capacity battery, these lights provide cordless operation, enhancing portability and placement flexibility. Multiple control modes, including APP, Wireless DMX, remote, sound-activated, and auto modes, allow for comprehensive lighting management.

CONTROL MODES AND LIGHT EFFECTS FOR PAR LIGHT



Auto	Sound Activated	Master/Slave	DMX(6/8/10CH)
Strobe	Fade	APP Control	Remote Control

Figure 2.1: Overview of control modes and light effects.



Figure 2.2: The lights offer over 16 million mixable colors for diverse lighting effects.

Key Features:

- **High Capacity Battery:** Built-in 4400mA rechargeable battery provides approximately 4 hours of full

brightness, 8-10 hours for single color, and 8 hours in auto mode.

- **Rich Lighting Effects:** RGBWA UV 6-in-1 LED lamp beads offer color selection, color shade, color pulse, color transition, strobe, and fade effects.
- **Multiple Control Modes:** Auto control, Sound-Activated control, Master-Slave, DMX512, and APP control.
- **Wireless Connectivity:** Supports 2.4G wireless signal control (up to 1000m) and WIFI (APP) control (up to 40m in open areas).
- **Compact and Portable:** Dimensions of 6*5.8*2.2 inches and weight of 0.9kg for easy transport and placement.

3. PACKAGE CONTENTS

Verify that all items listed below are included in your package:

- Par Light (quantity as per pack)
- IR Remote Control
- Instruction Manual
- Charger



Figure 3.1: Contents included in the product package.

4. SETUP

Initial Charging:

Before first use, fully charge the par light. The charging time is approximately 4 hours. A red indicator light on the charger signifies charging, which turns green upon full charge.

Your browser does not support the video tag.

Video 4.1: Demonstration of the charging process for the rechargeable par light.

Mounting and Placement:

The light includes a bracket for versatile placement. It can be placed on the ground or mounted on a truss or stage light stand. Ensure the light is securely positioned to prevent accidental falls.

EASY-TO-CARRY BATTERY POWERED STAGE LIGHTS



0.9kg/1.98lbs



Figure 4.1: The compact size and included bracket allow for easy placement and portability.

5. OPERATING MODES

The DazzlingStage Mini Rechargeable Par Lights offer several operating modes to suit different lighting needs.

5.1. Manual Control (On-Device):

The unit features a 4-digit display and control buttons (MENU, UP, DOWN, ENTER) on the back for direct mode selection and parameter adjustment. The display shows the current mode and settings.



Figure 5.1: Rear panel controls and indicators.

5.2. Remote Control:

Use the included IR remote control to easily switch between colors, adjust brightness, and select various effects like strobe and fade. The remote has a range of 8-10 meters.

Your browser does not support the video tag.

Video 5.1: Demonstration of remote control functionality for color and effect changes.

5.3. APP Control:

Download the dedicated "LED LAMP" app from your app store. Connect your device via WIFI (effective range up to 40 meters in open areas) to control the lights with a simple interface. The app allows for precise color selection and effect management.

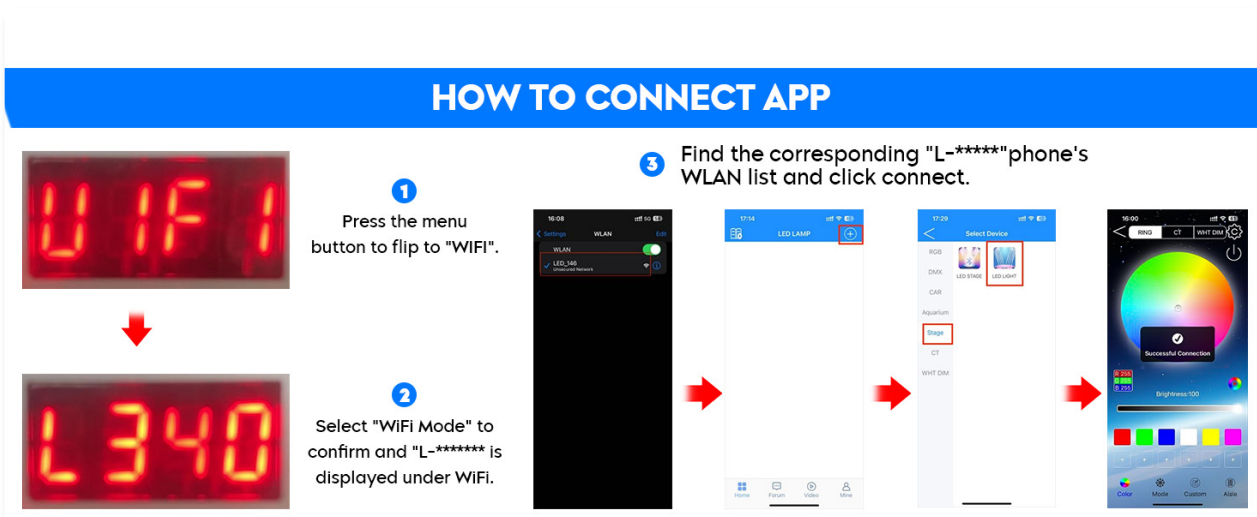


Figure 5.2: Steps to connect the light to the mobile application.

Your browser does not support the video tag.

Video 5.2: Guide on connecting DazzlingStage Rechargeable Uplights to the APP.

5.4. Sound-Activated Control:

The lights can react to music and sounds, changing colors and effects in rhythm. This mode is ideal for parties and dynamic environments.

5.5. Master-Slave Mode:

Connect multiple lights to synchronize their effects. Designate one unit as the master, and others will follow its programming.

5.6. DMX512 Control:

For professional lighting setups, the lights support DMX512 control. Use DMX IN/OUT ports to integrate with a DMX controller. Wireless DMX signal control is also supported with an effective distance of up to 1000 meters.

6. CHARGING

The built-in 4400mA battery provides extended operation. A full charge takes approximately 4 hours. The battery indicator on the unit displays the current charge level. Ensure to use only the provided charger to prevent damage.

RECHARGEABLE PAR STAGE LIGHT

Fully charged within 4 hours
100% ⚡
(Powered by 100 in the first time use)

Last up to 8 hours
(In the self-propelled working mode)

8-10 hours of single-color runtime
(4.2-4.5 hours full colors runtime)

4400mAh

Figure 6.1: Battery specifications and charging information.

7. MAINTENANCE

To ensure the longevity and optimal performance of your DazzlingStage Mini Rechargeable Par Lights, follow

these maintenance guidelines:

- **Cleaning:** Regularly wipe the exterior with a soft, dry cloth. Avoid using harsh chemicals or abrasive materials.
- **Storage:** Store the lights in a cool, dry place away from direct sunlight and extreme temperatures.
- **Battery Care:** For prolonged storage, charge the battery to about 50% every 3 months to maintain battery health.
- **Inspection:** Periodically check cables and connections for any signs of wear or damage.

8. TROUBLESHOOTING

If you encounter issues with your DazzlingStage Mini Rechargeable Par Lights, refer to the following common troubleshooting steps:

- **Light not turning on:** Ensure the battery is charged or the unit is plugged into a power source. Check the power switch.
- **Remote control not working:** Verify that the remote's batteries are functional and that there are no obstructions between the remote and the light's IR receiver.
- **APP connection issues:** Ensure Bluetooth and WIFI are enabled on your device and that the light is within the effective range. Restart the app or toggle WIFI on/off if necessary.
- **Inconsistent light effects:** Check DMX connections if applicable. Ensure all units in a Master-Slave setup are correctly configured.

For further assistance, please contact customer support.

9. SPECIFICATIONS

Feature	Specification
Model Number	ZQ01240
Light Source Type	RGBWA UV 6-in-1 LED
Light Source Wattage	18 Watts (per LED)
Battery Capacity	4400mA
Charging Time	Approx. 4 hours
Full Brightness Runtime	Approx. 4 hours
Single Color Runtime	8-10 hours
Auto Mode Runtime	8 hours
Control Modes	Auto, Sound-Activated, Master-Slave, DMX512, APP, Remote
Wireless DMX Range	Up to 1000m (2.4G)
APP Control Range	Up to 40m (WIFI, open area)
IR Remote Range	8-10m
Product Dimensions	5"L x 3"W x 5"H (approx. 6*5.8*2.2 inches)

Item Weight	0.9kg (1.98 lbs)
Material	Acrylic, Iron

10. WARRANTY AND SUPPORT

DazzlingStage offers a 30-day free return and exchange policy, along with a 180-day warranty service. For any issues or inquiries, please contact our professional after-sales service team. We aim to reply within 24 hours.

11. USAGE SCENARIOS

The DazzlingStage Mini Rechargeable Par Lights are suitable for a variety of applications due to their versatile features and portability.



Figure 11.1: Examples of the lights in use at different events.

Your browser does not support the video tag.

Video 11.1: Demonstration of rechargeable par lights in various settings.

Your browser does not support the video tag.

Video 11.2: Visual showcase of DazzlingStage Rechargeable Uplighting.