

Holyton US03A76731000HT70402

Holyton Drone Strobe Light Anti-Collision Lamp User Manual

Model: US03A76731000HT70402

1. INTRODUCTION

Thank you for choosing the Holyton Drone Strobe Light. This anti-collision lamp is designed to enhance the visibility of your drone during night flights and in various other scenarios. It features multiple colors and modes, ensuring compliance with aviation regulations and improving safety. Please read this manual thoroughly before use to ensure proper operation and maintenance.

2. SAFETY INFORMATION

- Always ensure the strobe light is securely attached to your drone or other object before operation.
- Adhere to all local aviation authority regulations regarding drone lighting, especially for night flying. This light meets FAA requirements for anti-collision lighting.
- Do not expose the device to extreme temperatures, direct sunlight for prolonged periods, or moisture.
- Keep out of reach of children.
- Do not attempt to disassemble or modify the light, as this will void the warranty and may cause damage.

3. PACKAGE CONTENTS

- Holyton Drone Strobe Light (1 unit)
- USB Charging Cable
- Mounting Accessories (e.g., adhesive pads, rubber bands)
- User Manual

4. PRODUCT FEATURES

- **High Visibility:** 120 lumens brightness with 360° coverage.
- **Multiple Colors & Modes:** 7 switchable colors and 7 adjustable flashing modes.
- **Rechargeable Battery:** Provides extended use time after a quick charge.
- **Lightweight & Compact:** Weighs only 6.5g, ideal for various drones and other applications.
- **Versatile Application:** Suitable for drones, RC vehicles, bicycles, motorcycles, helmets, and more.
- **FAA Compliant:** Meets requirements for anti-collision lighting during night flights.

5. SETUP AND INSTALLATION

5.1 Initial Charge

Before first use, fully charge the strobe light. Refer to Section 6 for charging instructions.

5.2 Mounting the Strobe Light

The Holyton Drone Strobe Light can be attached to various objects using the provided mounting accessories. For drones, ensure the light does not interfere with propellers, sensors, or flight stability.

1. **Clean Surface:** Ensure the mounting surface on your drone or object is clean and dry.
2. **Apply Adhesive:** Peel the backing from an adhesive pad and firmly press it onto the designated area on the strobe light.
3. **Attach to Drone:** Peel the remaining backing from the adhesive pad and attach the strobe light to your drone. Apply firm pressure for a few seconds to ensure a secure bond. Alternatively, use rubber bands or other suitable fasteners for temporary attachment.

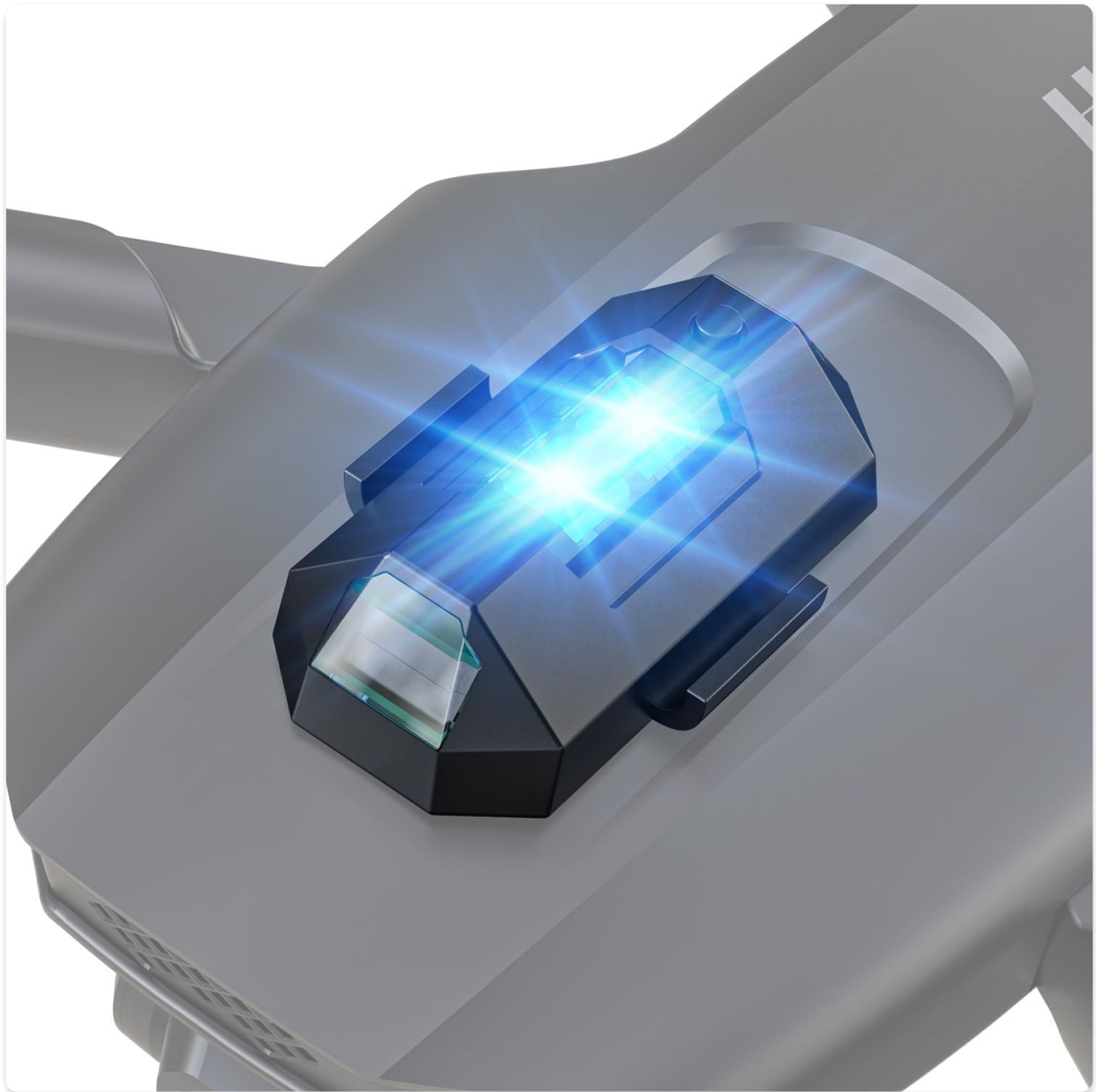


Image: The Holyton Drone Strobe Light securely mounted on top of a drone, emitting a bright blue light. This demonstrates a typical installation for enhanced visibility.

Versatile Use: Attachable to drones, RC vehicles, bikes, helmets & more



Image: A collage showing the Holyton Strobe Light attached to a drone, an RC car, a bicycle helmet, and an electric scooter. This illustrates the versatile application of the light beyond just drones.

6. OPERATING INSTRUCTIONS

6.1 Power On/Off

- **Power On:** Press and hold the power button for approximately 2 seconds until the light illuminates.
- **Power Off:** Press and hold the power button for approximately 2 seconds until the light turns off.

6.2 Changing Colors and Modes

The strobe light offers 7 different colors and 7 distinct flashing modes.

- **Change Color:** While the light is on, short press the power button to cycle through the available colors (e.g., white, red, green, blue, yellow, pink, ice blue).
- **Change Mode:** Double-press the power button quickly to cycle through the different flashing modes (e.g., constant, slow flash, fast flash, alternating colors).

120 Lumen Visibility & 360° Coverage



Image: A drone equipped with the Holyton Strobe Light, highlighting its 120 lumen visibility and 360-degree coverage. Below the drone, icons illustrate the 7 switchable colors and 7 adjustable modes, with examples of the light in different colors.

Your browser does not support the video tag.

Video: An official Holyton video demonstrating the drone strobe light in action during night flight. The video showcases the various colors and flashing modes, highlighting its visibility and anti-collision capabilities.

7. CHARGING

The Holyton Drone Strobe Light is equipped with a rechargeable Lithium Ion battery.

- **Charging Port:** Micro USB
- **Charging Time:** Approximately 12 minutes for a full charge.
- **Use Time:** Up to 5 hours on a full charge, depending on the selected mode and color.

To charge, connect the provided USB charging cable to the Micro USB port on the strobe light and plug the other end into a standard USB power source (e.g., computer, wall adapter).

Long Battery Life

Rechargeable, providing extended flight time



Charging port
:Micro USB



Charging time
:12 mins



Use time
:5h



Image: The Holyton Strobe Light connected to a Micro USB charging cable, illustrating its quick charging time of 12 minutes for up to 5 hours of use. The image emphasizes the long battery life feature.

8. MAINTENANCE

- **Cleaning:** Use a soft, dry cloth to clean the light. Do not use harsh chemicals or abrasive materials.
- **Storage:** Store the strobe light in a cool, dry place away from direct sunlight when not in use.
- **Battery Care:** For optimal battery life, avoid fully discharging the battery frequently. Charge the device regularly, even if not in use, to maintain battery health.

9. TROUBLESHOOTING

Problem	Possible Cause	Solution
Light does not turn on.	Battery is depleted.	Charge the strobe light fully.
Light does not charge.	Charging cable or power source is faulty.	Try a different USB cable or power adapter. Ensure the Micro USB connector is inserted correctly.

Problem	Possible Cause	Solution
Light is not bright enough.	Low battery or incorrect mode.	Charge the device. Ensure a bright mode is selected (e.g., constant white light).
Light falls off during use.	Improper mounting or worn adhesive.	Ensure the mounting surface is clean and dry. Use new adhesive pads or more secure fastening methods.

10. SPECIFICATIONS

Feature	Detail
Model Number	US03A76731000HT70402
Brand	Holyton
Color	Black
Shape	Rectangular
Finish Type	Painted
Light Source Type	Light Emitting Diode (LED)
Shade Material	Plastic
Item Weight	0.352 ounces (approximately 10 grams)
Number of Batteries	1 Lithium Ion (included)
Style	Compact
Brightness	120 Lumens (Maximum Light Output)
Mounting Type	Drone Mount (Adhesive/Strap)
Bulb Features	Strobe, Flashing, Anti-Collision, Search and Rescue
Product Dimensions	1"L x 1"W x 1"H (approximately)



Image: A close-up of the Holyton Strobe Light next to a hand, displaying its compact size (1.4*0.7*0.4 inches) and lightweight design (6.5g). This highlights the portability and minimal impact on drone flight.

11. WARRANTY AND SUPPORT

Holyton products are designed for reliability and performance. This product comes with a standard manufacturer's warranty against defects in materials and workmanship. Please refer to the product packaging or our official website for specific warranty terms and conditions.

For technical support, troubleshooting assistance, or warranty claims, please contact our customer service team:

- **Email:** holyton@foxmail.com
- **Phone:** +1 (866) 514-8669

Our support team is available to assist you within 24 hours.



[Holyton HS330 Drone: Instructions for Use and Safety Guide](#)

This comprehensive manual for the Holyton HS330 drone provides detailed instructions on setup, safe operation, flight modes, specifications, and troubleshooting. Essential reading for all users.



Holyton HT02 Drone: Instructions for Use and Manual

Comprehensive instructions and manual for the Holyton HT02 drone, covering setup, operation, safety guidelines, and specifications. Learn how to fly and maintain your drone.



[Holyton HT50 Drone User Manual and Safety Guide](#)

Comprehensive user manual for the Holyton HT50 drone, covering setup, flight operations, safety guidelines, specifications, and troubleshooting. Learn how to safely operate your HT50 drone.