

[Manuals.plus](#) /

> [TOKIT](#) /

> TOKIT PCC Replacement Filter for U1 SE Reverse Osmosis System - Instruction Manual

## TOKIT U1 SE PPC

# TOKIT PCC Replacement Filter for U1 SE Reverse Osmosis System - Instruction Manual

Model: U1 SE PPC

## PRODUCT OVERVIEW

The TOKIT PCC Replacement Filter is designed for the TOKIT U1 SE Reverse Osmosis System. This filter is NSF/ANSI 58 certified, ensuring high standards for reducing Total Dissolved Solids (TDS) and other impurities. It is engineered to provide cleaner, better-tasting water while maintaining optimal water pressure.





Image: The TOKIT PPC Under Sink Composite Filter shown alongside the TOKIT U1 SE water filtration system.

## Key Features

- **NSF/ANSI 58 Certified:** Ensures the filter meets strict standards for performance and material safety.
- **TDS Reduction:** Effectively reduces Total Dissolved Solids for purer water.
- **12-Month Lifetime:** Designed for a long service life, depending on local water quality.
- **Compatibility:** Specifically designed as a replacement for the TOKIT U1 SE Reverse Osmosis System.

# RO & PPC Replacement Filter

Compatible with TOKIT U1 SE water filtration system



Image: Illustration showing the compatibility of TOKIT RO and PPC replacement filters with the U1 SE water filtration system.

## Multi-Layer Filtration Structure

The TOKIT PCC filter utilizes a multi-layer filtration structure for excellent performance:

- **Stainless steel filter:** Initial filtration layer.
- **Folding PP cotton:** Reduces rust, sand, nematodes, and large particles.
- **Activated carbon:** Reduces residual chlorine and odor.
- **Antiscalant:** Effectively reduces water scale.
- **RO membrane:** Reduces TDS, chromium, PFAS, fluoride, salt, heavy metals, etc.
- **Folding PP cotton:** Further particle reduction.
- **Coconut shell carbon rod:** Enhances taste.
- **High Density Non-woven Fabric:** Final filtration layer.

# Multi-Layer Filtration Structure

Excellent filtration performance

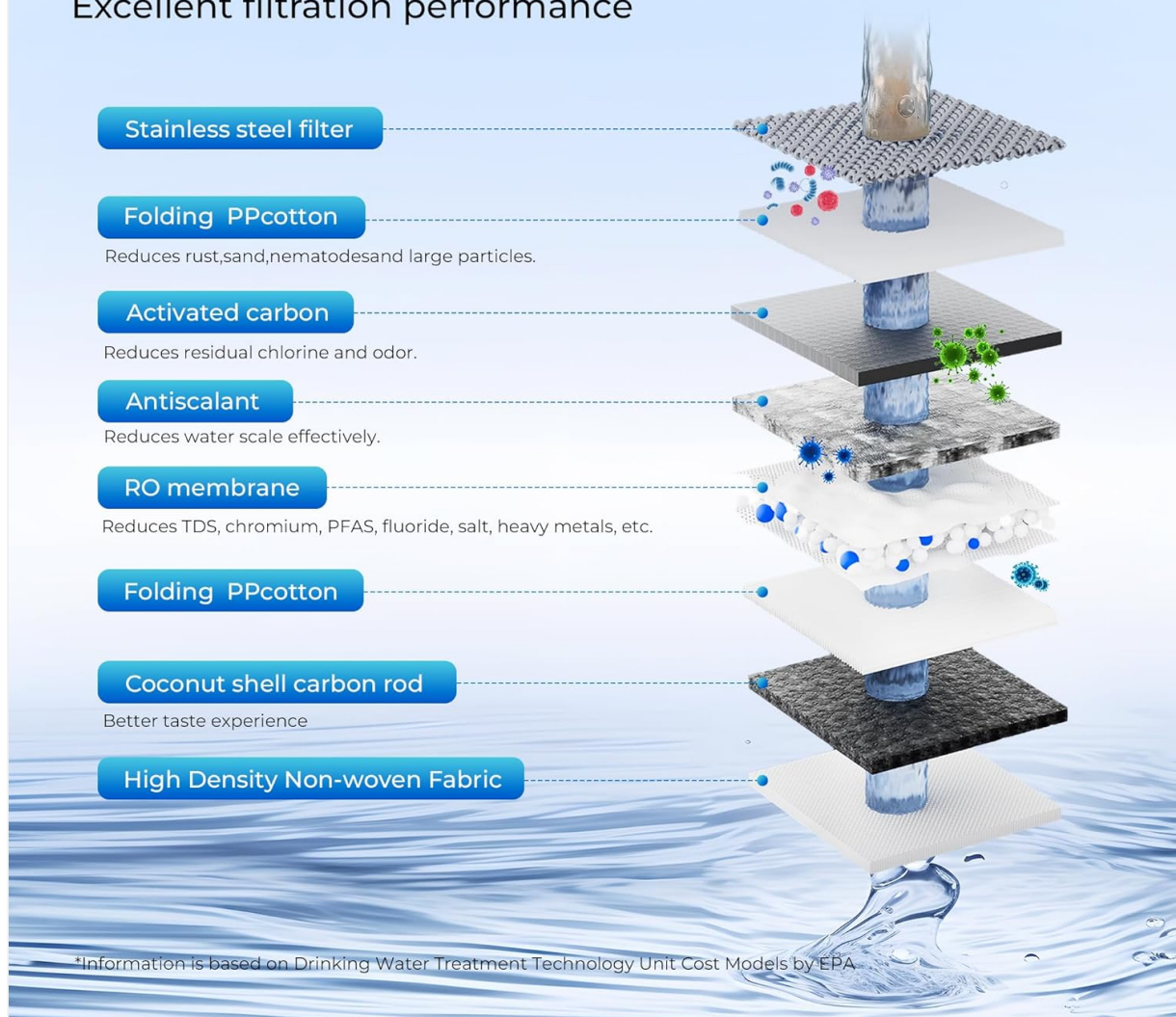


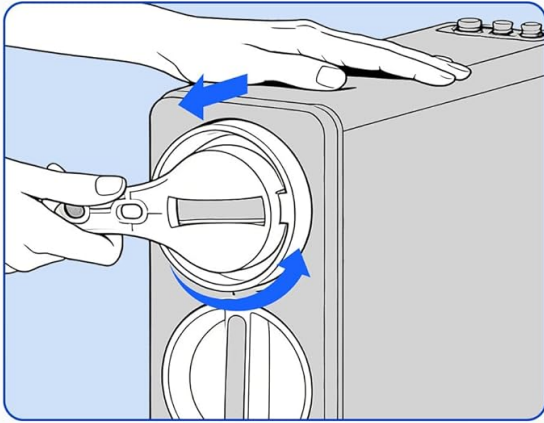
Image: A detailed diagram illustrating the multi-layer filtration structure of the TOKIT filter, showing each stage of purification.

## SETUP AND INSTALLATION

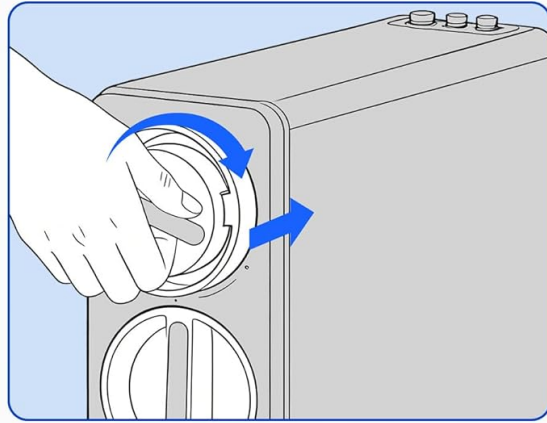
Follow these steps to replace your TOKIT PCC filter element:

1. **Disconnect Power and Water Supply:** Unplug the power supply and close the three-way ball valve connected to your water system.
2. **Remove Front Cover:** Carefully remove the front cover of the TOKIT U1 SE system.
3. **Remove Old Filter Element:** Use a filter wrench (if necessary) to turn the old filter element counter-clockwise and pull it out.
4. **Insert New Filter Element:** Remove the packaging from the new filter element. Insert the new filter element into the corresponding position and rotate it clockwise until it is securely in place.
5. **Reconnect Power and Water Supply:** Open the three-way ball valve and connect the power supply.
6. **Reset Filter Indicator:** Long press the RESET button for 3 seconds. The water purifier will enter the filter element resetting state. Short press the RESET button to select the desired filter to reset.
7. **Flush System:** Press the FLUSH button to start automatic flushing.
8. **Reinstall Front Cover:** Once flushing is complete, reinstall the front cover.

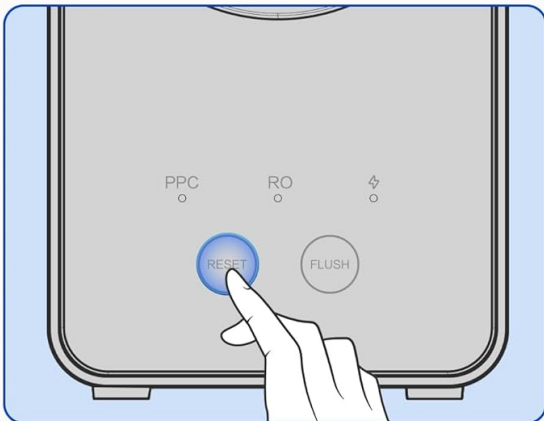
# Easy Replacement Installation



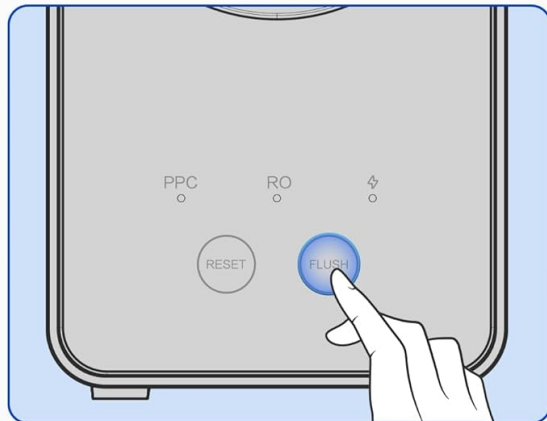
**1** Use filter wrench to twist off the old filter counter-clockwise



**2** Insert and twist the new filter clockwise



**3** Press and hold the RESET button for 3 seconds to reset the filter. Short press the RESET button to select the desired filter



**4** Press the FLUSH button to start automatic flushing, then reinstall the front cover

Image: A four-step visual guide demonstrating the easy replacement installation process for the TOKIT filter, including using a wrench, inserting the new filter, and resetting the system.

## Video Guide: Filter Replacement and Reset

Your browser does not support the video tag.

Video: Official TOKIT guide on how to replace and reset the filter for the U1 SE & U1 water purification system. This video demonstrates the steps for filter element replacement and system reset.

## OPERATING INSTRUCTIONS

Once the TOKIT PCC Replacement Filter is correctly installed and the system is flushed, the TOKIT U1 SE Reverse Osmosis System will operate normally, providing filtered water. The system is designed to automatically filter water as needed.

- Ensure the water supply and power are consistently connected for continuous operation.
- Monitor the system's indicator lights for filter status (refer to Troubleshooting section).
- The filter works to remove impurities for cleaner, better-tasting water while maintaining high water pressure.

## MAINTENANCE

## Filter Replacement Cycle

The TOKIT PCC Replacement Filter has a recommended lifetime of **no more than 12 months**. The actual lifespan may vary depending on local water quality and usage. Regular replacement ensures optimal filtration performance.



Image: The TOKIT PCC filter highlighting its recommended 12-month lifespan.

Refer to the "Setup and Installation" section for detailed steps on how to replace the filter element.

## TROUBLESHOOTING

### Filter Element Indicator Lights

The indicators for the PPC/RO filter elements on your TOKIT U1 SE system display different states based on the filter's condition:

- **Normal Operation:** Under normal conditions, the corresponding indicator light will be **blue**.
- **Replacement Needed:** If the system detects that the lifetime of a filter element has expired and it needs to be replaced, the corresponding indicator light will be **red**.

If an indicator light turns red, proceed with replacing the indicated filter element as described in the "Setup

and Installation" section.

## SPECIFICATIONS

Specification	Detail
<b>Model Number</b>	U1 SE PPC (TJSQ14US-PPC)
<b>Material</b>	Polypropylene (PP)
<b>Product Dimensions (D x W x H)</b>	4.7"D x 4.7"W x 15.5"H
<b>Item Weight</b>	5 Pounds
<b>External Testing Certification</b>	FCC, NSF/ANSI 58 Certified
<b>Product Benefits</b>	Removes impurities for cleaner, better-tasting water while maintaining high water pressure. Reduces TDS, chromium, PFAS, fluoride, salt, heavy metals.
<b>Replacement Cycle</b>	No more than 12 months
<b>Applicable Water Temperature</b>	41-100°F (5-38°C)
<b>Applicable Water Pressure</b>	14-58psi (0.1-0.4MPa, 1-4bar)
<b>Manufacturer</b>	Chunmi

## WARRANTY INFORMATION

Specific warranty details for the TOKIT PCC Replacement Filter are not provided in the product information. Please refer to the official TOKIT website or contact TOKIT customer support for comprehensive warranty information.

## SUPPORT AND CONTACT

For further assistance, product inquiries, or technical support, please visit the official TOKIT Store or contact their customer service.

- **Official TOKIT Store:** [Visit the TOKIT Store on Amazon](#)
- **Manufacturer:** Chunmi
- **Email:** [service@tokitglobal.com](mailto:service@tokitglobal.com)

