

VEVOR FLO500-RD

VEVOR 1/3 HP Under-Sink Sump Pump System FLO500-RD Instruction Manual

1. INTRODUCTION

This manual provides essential information for the safe and efficient installation, operation, and maintenance of your VEVOR 1/3 HP Under-Sink Sump Pump System, Model FLO500-RD. Please read these instructions thoroughly before use to ensure proper function and to prevent damage or injury.

The VEVOR Under-Sink Sump Pump System is designed for effective drainage of wastewater from utility sinks, laundry machines, bathtubs, and showers where gravity drainage is not feasible. It features a durable construction and an oil-filled motor for reliable performance.

2. SAFETY INSTRUCTIONS

WARNING: Failure to follow these safety instructions could result in electric shock, fire, or serious injury.

- Always disconnect the pump from the power supply before performing any maintenance, cleaning, or installation procedures.
- Ensure the power supply voltage matches the specifications listed on the pump's label.
- Do not operate the pump with a damaged cord or plug. If damaged, it must be replaced by the manufacturer, its service agent, or similarly qualified persons to avoid a hazard.
- This pump is designed for pumping clear or grey wastewater only. Do not use it for flammable liquids, corrosive chemicals, or sewage containing solids.
- Keep children and unauthorized persons away from the pump during operation.
- Ensure the pump is installed in a well-ventilated area and protected from freezing temperatures.
- Do not run the pump dry. Ensure there is always water in the system during operation to prevent motor damage.
- All electrical connections must be made by a qualified electrician and comply with local codes and regulations.

3. PRODUCT OVERVIEW

The VEVOR Under-Sink Sump Pump System is engineered for durability and efficient wastewater removal. Key features include:

- **Durable and Reliable:** ETL standard tested, featuring an oil-filled copper-wire motor to prevent overheating and a corrosion-resistant cast aluminum casing for stable, long-lasting performance.
- **Rapid Drainage:** Equipped with a 1/3 HP output motor spinning at 3500 RPM, delivering a maximum flow rate of 1500 GPH (6600 L/h) and a maximum head of 18 ft (5.5 m). It features a 1-1/2" outlet for swift water removal.
- **Low Drainage Outlet:** Designed with a low discharge outlet at the bottom to facilitate smooth sewage flow and prevent standing water.
- **Quiet Operation:** The oil-filled copper-wire motor is designed to reduce vibration and minimize noise during operation.



Figure 3.1: VEVOR 1/3 HP Under-Sink Sump Pump System, showing its compact design and connection points.

VEVOR
TOUGH TOOLS. HALF PRICE

ETL STANDARD TESTED

Multi-dimensional stability for drainage without worry



Oil-Filled Copper
Wire Motor - Durable



Aluminum Pump
Casing - Corrosion
and Rust Resistant



Overload Protection
Secure Usage

ETL Standard Tested



Figure 3.2: Key features highlighting the ETL standard testing, oil-filled copper wire motor, aluminum pump casing, and overload protection.

HIGH-POWER WATER PUMP

High head, large flow rate, and rapid water discharge



Motor Speed:
3500 r/min



Max Flow Rate:
1750GPH (US) / 6600l/h (EU)



Max Head:
18ft / 5.5m



Power: 1/3HP (US) / 250W (EU)



Outlet Size: 1-1/2"

Figure 3.3: Illustration of the pump's high-power capabilities, including motor speed (3500 r/min), max flow rate (1750 GPH), max head (18 ft / 5.5m), power (1/3 HP), and outlet size (1-1/2").

OIL-FILLED COPPER WIRE MOTOR

Noise reduction from the source

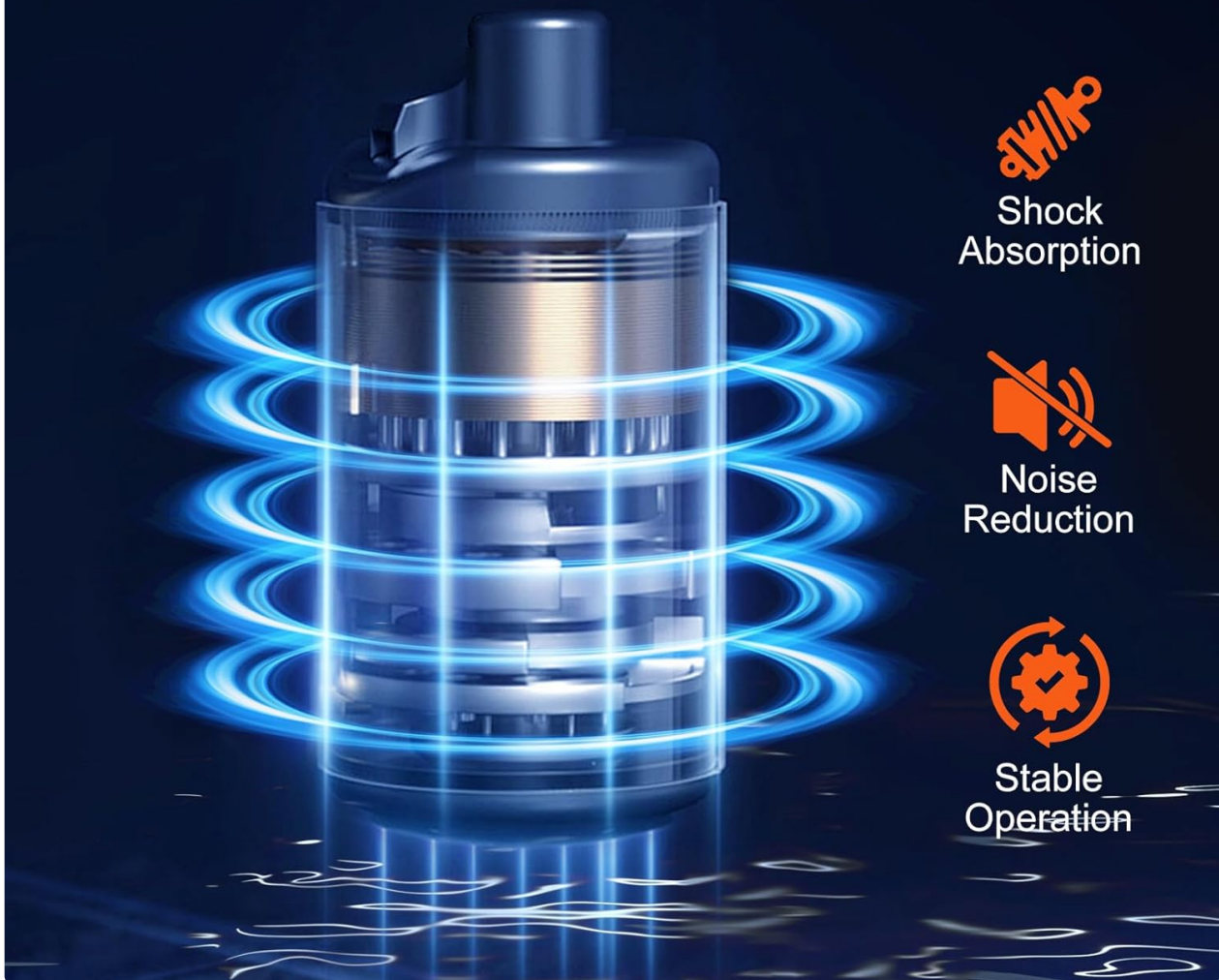
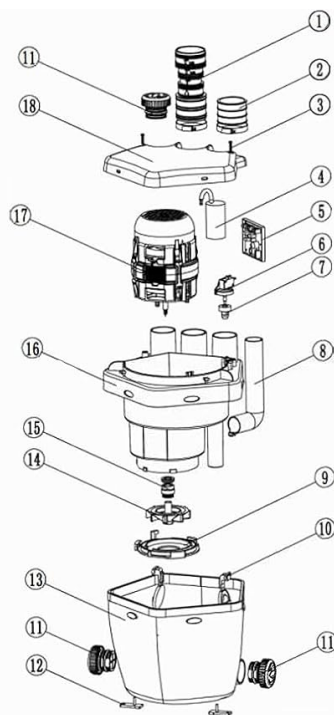


Figure 3.4: Benefits of the oil-filled copper wire motor, including shock absorption, noise reduction, and stable operation.

4. COMPONENTS AND ACCESSORIES

The VEVOR Under-Sink Sump Pump System comes with the following main components and accessories:



- | | |
|----------------------------|--------------------|
| ① Outlet pipe | ⑩ One-way valve |
| ② Inlet pipe | ⑪ Sultry cover |
| ③ Large pan head screws | ⑫ Fixed plate |
| ④ Electric capacity | ⑬ Main body |
| ⑤ Electronic control board | ⑭ Impeller |
| ⑥ Micro-switch | ⑮ Mechanical seal |
| ⑦ Switch seat | ⑯ Inner pump shell |
| ⑧ Discharging tube | ⑰ Motor parts |
| ⑨ Flow guide plate | ⑱ Main cover |

QUICK INSTALLATION, NO FUSS

Convenient and easy to use

Accessories



4 x Clamps
(32-50mm)



1 x Clamps
(40-60mm)



2 x Positioning
Plates



4x Input
Connectors



1 x Output
Tube



2 x Screws

Figure 4.1: Exploded view of the pump system, detailing internal and external components. Accessories include various clamps, input connectors, an output tube, positioning plates, and screws.

- **Main Body:** The pump housing containing the motor and impeller.
- **Outlet Pipe:** For discharging pumped water.
- **Inlet Pipe:** For water entry into the pump.
- **One-way Valve:** Prevents backflow of water.
- **Micro-switch:** Activates the pump based on water level.
- **Accessories:** 4 x Clamps (32-50mm), 1 x Clamp (40-60mm), 2 x Positioning Plates, 4 x Input Connectors, 1 x Output Tube, 2 x Screws.

5. SETUP AND INSTALLATION

The VEVOR Under-Sink Sump Pump System is designed for straightforward installation. Follow these steps carefully:

1. **Placement:** Position the pump system in a suitable location, typically under a sink or near the appliance requiring drainage. Ensure it is on a stable, level surface.
2. **Connect Inlet Pipes:** Connect the drainage pipes from your wash basin, bathtub, shower, or washing

machine to the inlet ports of the pump. Use the provided input connectors and clamps to secure connections, ensuring they are watertight. The pump features a user-friendly bottom inlet for unrestricted drainage.

3. **Connect Output Pipe:** Attach the output tube to the pump's discharge outlet. Secure it with the appropriate clamp. Connect the other end of the output tube to your main drainage system, ensuring a proper seal and a slight downward slope for gravity assistance if possible.
4. **Secure the System:** Use the provided positioning plates and screws to secure the pump system to the floor or wall, if desired, to prevent movement during operation.
5. **Electrical Connection:** Plug the pump into a grounded 120-Volt AC 60Hz electrical outlet. Ensure the circuit is protected by a Ground Fault Circuit Interrupter (GFCI).
6. **Test Operation:** Once all connections are secure, introduce water into the system to test the pump's automatic operation. The pump should activate when the water level rises and shut off once the water is drained.



Figure 5.1: Example installation of the VEVOR Sump Pump system under a sink, showing typical plumbing connections.



USER-FRIENDLY BOTTOM INLET

Unrestricted Drainage



Figure 5.2: The pump's versatile bottom inlet design allows connection to wash basins, bathtubs, and showers for unrestricted drainage.

Installation Video Guide

Your browser does not support the video tag.

Video 5.1: Official VEVOR guide demonstrating the installation steps for the utility sink pump. This video provides a visual walkthrough of connecting the various pipes and securing the unit.

6. OPERATING INSTRUCTIONS

The VEVOR Under-Sink Sump Pump System operates automatically based on water levels.

- **Automatic Operation:** Once properly installed and connected to power, the pump will automatically activate when the water level inside the unit reaches the designated starting level (approximately 3.94 inches / 100 mm).
- **Automatic Shut-off:** The pump will continue to operate until the water level drops to the designated stopping level (approximately 0.79 inches / 20 mm), at which point it will automatically shut off.
- **Continuous Monitoring:** The system continuously monitors the water level, ensuring efficient and timely drainage without manual intervention.

7. MAINTENANCE

Regular maintenance ensures the longevity and optimal performance of your sump pump system.

- **Disconnect Power:** Always disconnect the pump from the power supply before any maintenance.
- **Inspect Connections:** Periodically check all pipe connections for leaks and ensure clamps are tight.
- **Clean Inlet/Outlet:** Inspect the inlet and outlet ports for any debris or blockages. Clear any obstructions to maintain optimal flow.
- **Check for Debris:** Occasionally, inspect the pump chamber for any accumulated debris that might interfere with the float switch or impeller.
- **Winterization (if applicable):** If the pump is in an area subject to freezing temperatures and will not be used, drain all water from the system to prevent damage from freezing.

8. TROUBLESHOOTING

Refer to the table below for common issues and their potential solutions.

Problem	Possible Cause	Solution
Pump does not start	No power; Clogged inlet/impeller; Faulty float switch.	Check power connection and GFCI; Disconnect power and clear clogs; Contact VEVOR support if float switch is faulty.
Pump runs continuously	Float switch stuck; Backflow from discharge pipe; Continuous water inflow.	Check float switch for obstructions; Ensure one-way valve is functioning; Verify water source is not continuously feeding the pump.
Pump runs but no water is discharged	Air lock; Clogged discharge pipe; Impeller damage.	Ensure pump is primed; Clear discharge pipe; Contact VEVOR support for impeller inspection.
Reduced flow rate	Partial clog; Worn impeller; Insufficient power.	Clear partial clogs; Check power supply; Contact VEVOR support for inspection.
Unusual noise or vibration	Debris in impeller; Loose mounting; Motor issue.	Disconnect power and clear debris; Ensure pump is securely mounted; Contact VEVOR support.

9. SPECIFICATIONS

Detailed technical specifications for the VEVOR 1/3 HP Under-Sink Sump Pump System:



- Item Model Number: **FLO500-RD**
- Voltage/Frequency: **AC120V 60Hz (US) / AC230V 50Hz (EU)**
- Power: **1/3HP (US) / 250W (EU)**
- Max Flow Rate: **1750GPH (US) / 6600l/h (EU)**
- Max Head: **18 ft/5.5 m**
- Product Weight: **11.9 lbs/5.4 kg**
- Product Size: **10.2 x 10.2 x 9.4 in/260 x 260 x 240 mm**

Figure 9.1: Visual representation of the pump's dimensions and a summary of its key specifications.

Specification	Value
Brand	VEVOR
Model Number	FLO500-RD
Power	1/3 HP (US) / 250W (EU)
Voltage/Frequency	AC120V 60Hz (US) / AC230V 50Hz (EU)
Maximum Flow Rate	1750 GPH (US) / 6600 L/h (EU)
Maximum Lifting Height (Head)	18 ft / 5.5 m
Item Weight	11.9 lbs / 5.4 kg


Specification	Value
Product Dimensions	10.2 x 10.2 x 9.4 inches / 260 x 260 x 240 mm
Material	Plastic, Cast Aluminum (motor casing)
Color	White
Power Source	Corded Electric
Included Components	1 x Utility Sink Pump, various clamps, input connectors, output tube, positioning plates, screws

10. WARRANTY AND SUPPORT

For warranty information, technical support, or service inquiries regarding your VEVOR Under-Sink Sump Pump System, please contact VEVOR customer service. Refer to your purchase documentation or the official VEVOR website for the most current contact details and warranty terms.

It is recommended to register your product upon purchase to facilitate any future support needs.

Related Documents - FLO500-RD

	<p>VEVOR FLO500-BE Macerator Pump User Manual</p> <p>User manual for the VEVOR FLO500-BE Macerator Pump, providing installation, operation, specifications, accessories, and safety guidelines for household use.</p>
	<p>VEVOR FLO500 Sewage Pump Installation Instructions</p> <p>Installation instructions for the VEVOR FLO500 Sewage Pump, including specifications, accessories, functions, installation guidelines, and troubleshooting.</p>
	<p>VEVOR Free Standing Stainless Steel Sink SS1200-2 User Manual</p> <p>User manual for the VEVOR Free Standing Stainless Steel Sink, model SS1200-2. Provides detailed instructions on safety, parts identification, assembly, installation, and maintenance for this commercial-grade sink.</p>



Sink Drain P-Trap
MODEL:HC8009

VEVOR HC8009 Sink Drain P-Trap: Installation Guide and Product Information

Detailed installation instructions and product specifications for the VEVOR HC8009 Sink Drain P-Trap. Learn how to install and maintain your plumbing fixture.



We continue to be committed to provide you back with competitive price. "Save a lot" or "Big Price" is only other pricing expressions used by us only represents an estimate of savings you might benefit from buying certain goods with us. Consequently, the major top brands and items is a necessary means to cover of categories of goods offered by us. This is why we select the very top brands when you are placing an order with us. They are actually a long list of brands comparable with the top major brands.

VEVOR FLO500 Sewage Pump Installation Instructions

Comprehensive installation guide for the VEVOR FLO500 Sewage Pump, detailing setup, specifications, functions, warnings, and troubleshooting for effective wastewater management.



It's continue to be remarkable provide you back with competitive price.
"Great! Half!" That's for any other source anyone can't do it only represents an estimate of savings you may be able to keep in the future as compared to the major the brands and does not necessarily mean the same of ingredients of both offered by us. You are kindly reminded to verify carefully when you are placing an order with us if you are not only saving half in comparison with the major brands.

VEVOR Portable Utility Pump USR Manual

This manual provides setup, operating, safety, and maintenance instructions for the VEVOR Portable Utility Pump. It includes detailed information on electrical safety, grounding, extension cords, troubleshooting, and parts lists.