



Manuals.plus /

› HCJYC /

› Instruction Manual: 4-in-1 Protective Case for Flipper Zero and Wi-Fi Dev Board

HCJYC B0DCP5QSNK

Instruction Manual: 4-in-1 Protective Case

For Flipper Zero Device and Wi-Fi Dev Board V1 ESP32-S2

Brand: HCJYC | Model: B0DCP5QSNK

INTRODUCTION

This manual provides detailed instructions for the HCJYC 4-in-1 Protective Case set, designed to offer robust protection for your Flipper Zero device and its Wi-Fi Dev Board V1 ESP32-S2. The set includes a soft silicone case for the Flipper Zero, a precise case set for the Wi-Fi Dev Board, an EVA carrying case, a hand strap, and a carabiner. This accessory kit ensures your devices are protected from drops, dust, and general wear while maintaining full functionality and access to all ports.



Overview of the 4-in-1 Protective Case set components.

SETUP AND INSTALLATION

1. Installing the Silicone Case on Flipper Zero

The soft silicone case is designed for a snug fit, providing 360-degree protection for your Flipper Zero device. Simply slide your Flipper Zero into the silicone case, ensuring all cutouts align with the device's ports and buttons. The flexible material allows for easy installation and removal.



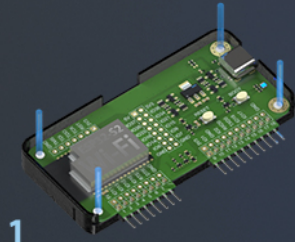
Flipper Zero securely fitted within its silicone protective case.

2. Assembling the Wi-Fi Dev Board Case

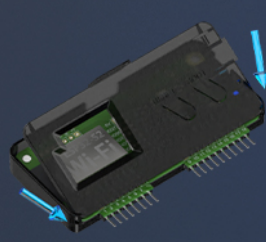
The Wi-Fi Dev Board case set is designed for easy, tool-free assembly with a precise snap-fit mechanism.

1. **Step 1: Align the Board.** Align the Wi-Fi Dev Board V1 ESP32-S2 with the back panel of the case. Ensure the four panel holes precisely match the board's mounting points.
2. **Step 2: Snap into Place.** Target the case's flex parts precisely and apply a small force on the snap-fit joint until the board is securely seated.
3. **Step 3: Attach the Cap.** Wrap the pins of the Wi-Fi Dev Board with the protective PC cap. This cap provides 360-degree protection, preventing accidental button presses and protecting the Type-C port from dust and oxidation. The cap can be easily put on or removed without bending pins.

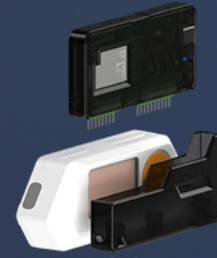
Free Of Tools & Screws, Easy to assembly



1
Align the board with back panel.
Target four panel holes precisely.



2
Target joint's flex parts precisely,
apply a small force on the snap-fit joint.



3
wrap pins with the cap.
Take pins out directly if needed.

Visual guide for Wi-Fi Dev Board case assembly.



Flipper Zero with Wi-Fi Dev Board and protective cases assembled.



Demonstration of the protective PC cap for the Wi-Fi Dev Board.

OPERATING THE PROTECTED DEVICES

The protective cases are designed to enhance durability without hindering the functionality of your Flipper Zero or Wi-Fi Dev Board.

- **Full Port Access:** Both cases feature precise cutouts, ensuring full access to all necessary ports, including the USB-C charging port, SD card slot, and the iButton interface on the Flipper Zero.
- **Button Accessibility:** The Wi-Fi Dev Board case allows for easy access to the RESET and BOOT buttons, crucial for device operation and firmware updates.
- **Enhanced Portability:** The included EVA carrying case, hand strap, and carabiner provide convenient and secure transport for your Flipper Zero and Wi-Fi Dev Board, whether you're on the go or storing them.



Easily open IButton

Real Full-Body Case For 95% Covering

The One Step Molding Process ensures superior care for your device, eliminating concerns about moisture and dust. It is also compatible with a wider range of usage conditions.

Easy access to the Flipper Zero's iButton port.



Accessibility of RESET and BOOT buttons on the Wi-Fi Dev Board case.

To ensure the longevity and appearance of your protective cases, follow these simple maintenance guidelines:

- **Cleaning:** For the silicone case and Wi-Fi Dev Board case, wipe with a soft, damp cloth. Mild soap can be used for stubborn dirt, then rinse thoroughly and air dry. Avoid harsh chemicals or abrasive materials.
- **EVA Carrying Case:** Spot clean with a damp cloth. If necessary, use a small amount of mild detergent. Allow to air dry completely before storing devices inside.
- **Storage:** Store the cases and your devices in a cool, dry place away from direct sunlight and extreme temperatures to prevent material degradation.

TROUBLESHOOTING

Most issues related to the protective cases are minor and can be resolved easily.

- **Case Not Fitting Properly:** Ensure you have the correct case for your specific Flipper Zero model and Wi-Fi Dev Board V1 ESP32-S2. Double-check the orientation of the device within the case. For the Wi-Fi Dev Board case, ensure all snap-fit joints are fully engaged.
- **Difficulty Accessing Ports/Buttons:** Verify that the case is correctly aligned with the device. The precise cutouts should not obstruct any functionality. If an obstruction occurs, gently adjust the device within the case.
- **Dust or Debris Inside Case:** Periodically remove your devices from their cases and clean both the devices and the inside of the cases to prevent accumulation of dust or debris.

SPECIFICATIONS

Feature	Detail
Brand	HCJYC
Model Number	B0DCP5QSNK
Color	Black
Material (Flipper Zero Case)	Soft Silicone
Material (Wi-Fi Dev Board Case)	PC (Polycarbonate)
Material (Carrying Case)	EVA
Item Weight	3.84 ounces
Package Dimensions	5.59 x 4.61 x 1.69 inches
Compatibility	Flipper Zero Device, Wi-Fi Dev Board V1 ESP32-S2

WHAT'S IN THE BOX

- 1x Soft Protective case for Flipper Zero device
- 1x Protective case set for Flipper Zero Wi-Fi Dev Board
- 1x EVA Carrying Case
- 1x Hand Strap
- 1x Carabiner

Note: The Flipper Zero Device and Wi-Fi Board are NOT included with this accessory set.

WARRANTY AND SUPPORT

For any questions regarding your HCJYC 4-in-1 Protective Case set, including warranty information or technical support, please contact the seller directly through the platform where you made your purchase. You can also visit the official HCJYC Store on Amazon for more information and contact options:

Visit the HCJYC Store