

Manuals+

[Q & A](#) | [Deep Search](#) | [Upload](#)

manuals.plus /

> [LEOBOG](#) /

> [LEOBOG Hi75 Keyboard User Manual - 75% Wired Gaming Keyboard](#)

LEOBOG Hi75

LEOBOG Hi75 75% Wired Gaming Keyboard User Manual

Model: Hi75 | Brand: LEOBOG

INTRODUCTION

Thank you for choosing the LEOBOG Hi75 75% Wired Gaming Keyboard. This manual provides essential information for setting up, operating, and maintaining your new mechanical keyboard. Designed for both gaming and productivity, the Hi75 combines a compact layout with premium features for an enhanced user experience.

PRODUCT FEATURES

- **Stylish 75% Layout:** The LEOBOG Hi75 mechanical keyboard features an 81-key layout, providing essential keys without occupying excessive desk space. Its creamy aesthetic offers a visually appealing design.
- **Durable Aluminum Body:** Constructed from top-quality aluminum metal with PBT keycaps, the keyboard undergoes an exquisite spraying process to prevent fingerprint staining. This ensures a sturdy, durable, and luxurious feel. PBT keycaps are ergonomically curved for comfortable typing.
- **Multimedia Knob Controls:** The integrated mechanical knob allows for quick switching between work and game modes, as well as precise adjustment of RGB brightness, speed, and volume.
- **Programmable RGB Backlight:** With macro driver support, the RGB keyboard offers adjustable light effects, including 10 effects that synchronize with music rhythm, allowing for personalized ambiance.
- **DIY Hot-Swappable Gasket Structure:** Designed with a stacked gasket structure using PORON material, this custom keyboard significantly reduces cavity noise and provides a softer typing experience. It is hot-swappable, compatible with both 3-pin and 5-pin switches, enabling easy customization.
- **Advanced Gaming Chip:** Equipped with an advanced gaming keyboard chip, the wired mechanical keyboard achieves a response speed of up to 2.8ms. It features a Type-C port and a 2m detachable spring cable.

SETUP

Connecting Your Keyboard

The LEOBOG Hi75 keyboard supports multiple connection methods:

- **Wired Connection:** Connect the provided 2m detachable spring USB Type-C cable to the keyboard's Type-C port and to your computer's USB port.
- **Wireless 2.4G Connection:** Insert the USB receiver (dongle) into an available USB port on your computer. Ensure the keyboard's mode switch is set to 2.4G.
- **Bluetooth Connection:** Switch the keyboard's mode to Bluetooth. Follow your device's instructions to pair with the keyboard. The keyboard supports up to three Bluetooth channels.



Image: LEOBOG Hi75 Keyboard connected to a laptop via its coiled USB-C cable, showcasing its compact 75% layout and RGB backlighting.

OPERATING INSTRUCTIONS

Multimedia Knob Functions

The multi-function knob located on the top right of the keyboard provides quick access to several controls:

- **Volume Control:** Rotate the knob to adjust the system volume.
- **RGB Brightness/Speed:** Press the knob to cycle through RGB brightness and speed adjustments.

Rotate to change the level.

- **Mode Switching:** Long press the knob to switch between work and game modes.



Image: Close-up of the LEOBOG Hi75 keyboard's multimedia knob, illustrating its long press functions for game mode and volume control.

RGB Backlight Control

Customize your keyboard's lighting effects:

- **Switching Backlight Effect:** Press **FN + \|** to cycle through various backlight effects.
- **Switching Backlight Color:** Press **FN + TAB** to change the backlight color.



Image: Two LEOBOG keyboards side-by-side, one with 16+ million RGB backlight and the other demonstrating FN + \ | for effect switching and FN + TAB for color switching.

Hot-Swappable Switches

The LEOBOG Hi75 supports hot-swappable switches, allowing you to easily change mechanical switches without soldering. This feature enables customization of typing feel and sound.

- **Compatibility:** Compatible with 3-pin and 5-pin mechanical switches.
- **Removal:** Use the provided switch puller tool to carefully remove existing switches.
- **Installation:** Align the pins of the new switch with the sockets on the PCB and press gently until it clicks into place.

All Keys Hot-Swap

Supports 3-pin/5-pin Switch
Enjoy the fun of customisation

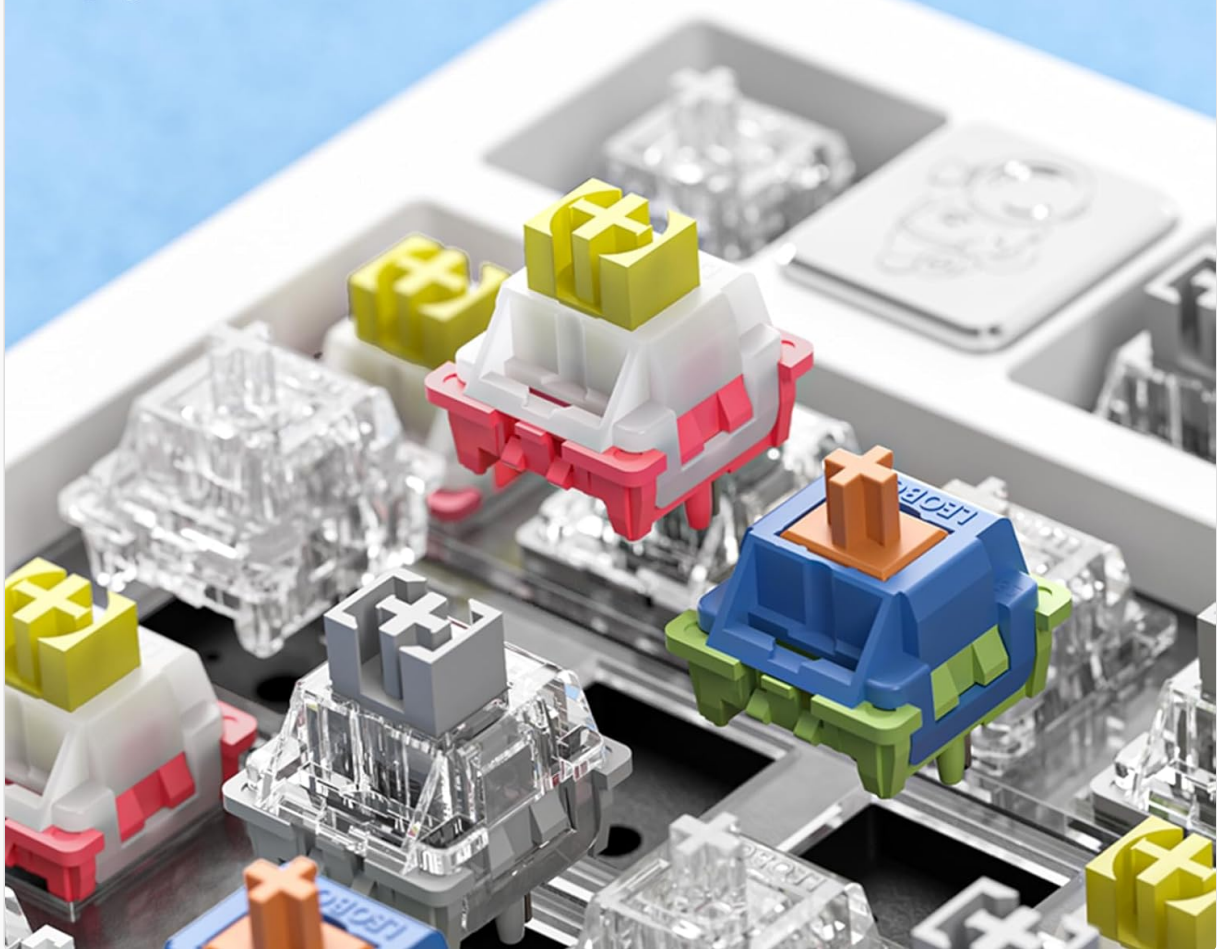


Image: Close-up view of the LEOBOG Hi75 keyboard's hot-swappable sockets with various 3-pin and 5-pin switches, highlighting the ease of customization.

MAINTENANCE

To ensure the longevity and optimal performance of your LEOBOG Hi75 keyboard, follow these maintenance tips:

- **Cleaning:** Regularly clean the keyboard with a soft, dry cloth. For deeper cleaning, remove keycaps and use compressed air to clear debris. The PBT keycaps are designed to resist fingerprint staining.
- **Cable Care:** Handle the detachable USB Type-C cable with care to prevent damage. Avoid sharp bends or excessive pulling.
- **Storage:** When not in use, store the keyboard in a clean, dry environment away from direct sunlight and extreme temperatures.

TROUBLESHOOTING

If you encounter any issues with your LEOBOG Hi75 keyboard, try the following steps:

- **Connection Issues:** Ensure the cable is securely connected for wired mode. For wireless modes, verify the USB receiver is properly inserted or Bluetooth is paired correctly. Try restarting your computer or reconnecting the keyboard.

- **Key Not Responding:** If a specific key is not working, try removing and re-inserting the switch for that key. Ensure the switch pins are not bent.
- **RGB Malfunction:** Check the RGB settings using the multimedia knob or FN key combinations. Ensure the keyboard's drivers are up to date if using custom software.

SPECIFICATIONS

Feature	Detail
Product Dimensions	14.76 x 7.24 x 2.95 inches
Item Weight	4.77 pounds
Manufacturer	LEOBOG
Model Number	Hi75
Color	White-Blue-Purple
Number of Keys	81 (75% Layout)
Connectivity	Wired (USB-C), Wireless (2.4G), Bluetooth
Switch Type	Hot-swappable (3-pin & 5-pin compatible)

ADDITIONAL INFORMATION & MEDIA

Gasket Structure Explained

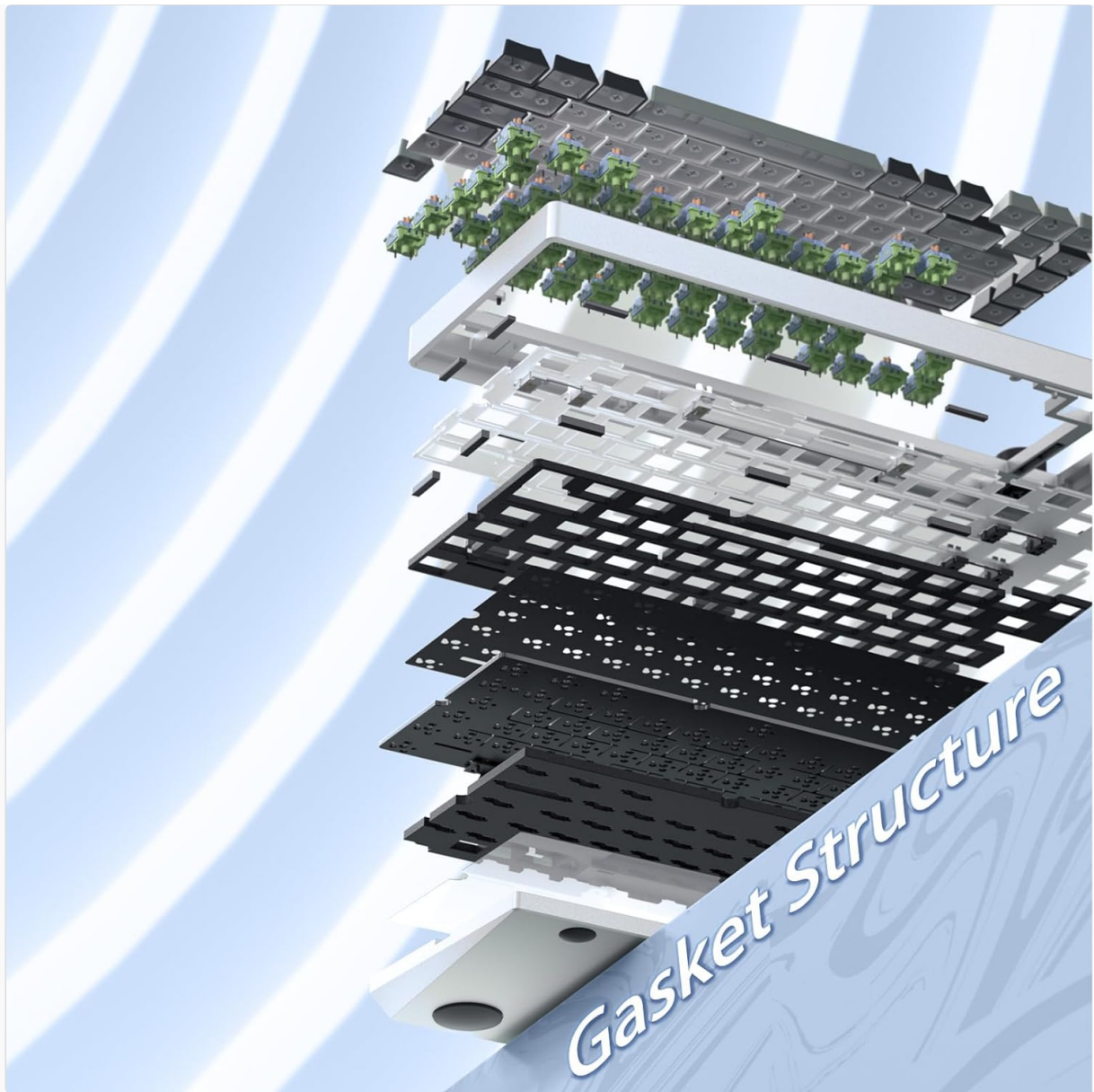


Image: Exploded view diagram of the LEOBOG Hi75 keyboard's gasket structure, showing layers of foam and PCB for sound dampening.

Advanced Gaming-Grade Chip

Advanced Gaming-Grade Chip



Crafted from premium aluminium alloy and finished with an exquisite injection moulding process, the keyboard's casing promises durability.



Image: Diagram illustrating the advanced gaming-grade chip within the LEOBOG Hi75 keyboard, emphasizing durability and performance.

LEOBOG Switch Types



Barbie Switch ▶▶▶

- Initial pressure: 28gfMin
- Bottom pressure: 45±3gf
- Total key stroke: 3.7±0.3mm
- Conduction pressure: 33±3gf
- Conduction stroke: 1.5±0.3mm
- Mechanical life: about 60,000,000 times

5-Pin Switches
Switch Material: POM
Switch Type: Linear switch
Crisp and focused touchdown sound
Comfortable rebound for work and play

Star Vector Switch ▶▶▶

- Initial pressure: 32 gfMin
- Bottom pressure: 55±3gf
- Total key stroke: 3.5±0.3mm
- Conduction pressure: 40±3gf
- Conduction stroke: 1.8±0.3mm
- Mechanical life: about 60,000,000 times

5-Pin Switches
Switch Material: POM
Switch Type: Linear switch
Pressure feels very light and smooth
Better for long hours of typing

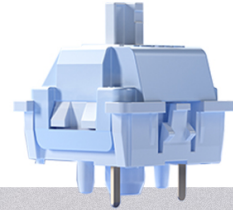
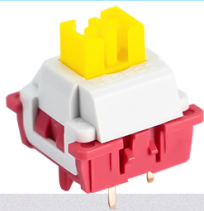


Image: Comparison chart of LEOBOG Barbie and Star Vector 5-pin linear switches, detailing initial pressure, bottom pressure, total key stroke, conduction pressure, conduction stroke, and mechanical life.



Nimbus Switch ▶▶▶

- Initial pressure: 30gfMin
- Bottom pressure: 45±3gf
- Total key stroke: 3.6±0.3mm
- Conduction pressure: 35±3gf
- Conduction stroke: 1.2±0.3mm
- Mechanical life: about 60,000,000 times

5-Pin Switches
Switch Material: POM
Switch Type: Advanced linear switch
Light pressure, easy rebound, no fatigue
Suitable for both work and game

Block Switch ▶▶▶

- Initial pressure: 42gfMin
- Bottom pressure: 54±3gf
- Total key stroke: 3.6±0.3mm
- Conduction pressure: 36±3gf
- Conduction stroke: 1.9±0.3mm
- Mechanical life: about 60,000,000 times

5-Pin Switches
Switch Material: POM
Switch Type: Advanced tactile switch
Smooth, noise-reducing
Comfortable feel and clear feedback
Suitable for gaming and office typing

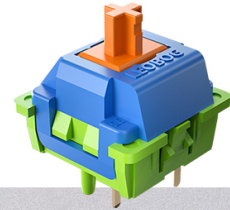


Image: Comparison chart of LEOBOG Nimbus 5-pin advanced linear switches and Block 5-pin advanced tactile switches, detailing their specifications and suitable uses.



Rambo Switch ▶▶▶

- Initial pressure: 30gfMin
- Bottom pressure: 50±3gf
- Total key stroke: 3.6±0.3mm
- Conduction pressure: 40±3gf
- Conduction stroke: 1.5±0.3mm
- Mechanical life: about 60,000,000 times

5-Pin Switches
Switch Material: POM
Switch Type: Linear switch
Light stress, early bottoming out
Juggling the demands of typing and gaming

Space Crystal Switch ▶▶▶

- Initial pressure: 49gfMin
- Bottom pressure: 53±3gf
- Total key stroke: 3.7±0.3mm
- Conduction pressure: 37±3gf
- Conduction stroke: 1.7±0.3mm
- Mechanical life: about 60,000,000 times

5-Pin Switches
Switch Material: POM
Switch Type: Linear switch
Unique feel with responsive and quick buttons
Suited for fast input and response in games

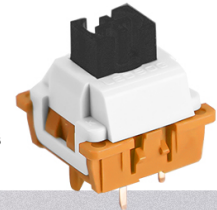
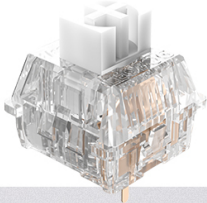


Image: Comparison chart of LEOBOG Rambo 5-pin linear switches and Space Crystal 5-pin linear switches, detailing their specifications and suitable uses.



Crystal Switch >>>

- Initial pressure: 26gfMin
- Bottom pressure: 48±3gf
- Total key stroke: 3.7±0.3mm
- Conduction pressure: 35±3gf
- Conduction stroke: 1.8±0.3mm
- Mechanical life: about 60,000,000 times

- 5-Pin Switches
- Switch Material: POM
- Switch Type: Linear switch
- Soft touch and good responsiveness
- Suitable for both work and game

Ice Blue Switch >>>

- Initial pressure: 38gfMin
- Bottom pressure: 53±3gf
- Total key stroke: 3.5±0.3mm
- Conduction pressure: 43±3gf
- Conduction stroke: 1.5±0.3mm
- Mechanical life: about 60,000,000 times

- 5-Pin Switches
- Switch Material: POM
- Switch Type: Tactile switch
- Crisp sound and strong feedback
- Translucent shaft for RGB enthusiasts
- Suitable for work typing



Image: Comparison chart of LEOBOG Crystal 5-pin linear switches and Ice Blue 5-pin tactile switches, detailing their specifications and suitable uses.



Reaper Switch >>>

- Initial pressure: 36gfMin
- Bottom pressure: 55±3gf
- Total key stroke: 3.6±0.3mm
- Conduction pressure: 45±3gf
- Conduction stroke: 1.8±0.3mm
- Mechanical life: about 60,000,000 times

- 5-Pin Switches
- Switch Material: POM
- Switch Type: Linear switch
- Elongated axes bottoming out early
- With light guide mirror, RGB brighter
- Suitable for gaming and office typing

Gray Wood Switch V3 >>>

- Initial pressure: 30gfMin
- Bottom pressure: 53±3gf
- Total key stroke: 3.6±0.3mm
- Conduction pressure: 40±3gf
- Conduction stroke: 1.5±0.3mm
- Mechanical life: about 60,000,000 times

- 3-Pin Switches
- Switch Material: POM
- Switch Type: Linear switch
- Short key stroke, fast response time
- Good for gaming, not for long time typing

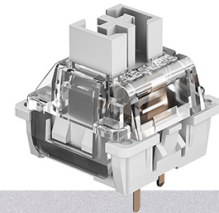


Image: Comparison chart of LEOBOG Reaper 5-pin linear switches and Gray Wood Switch V3 3-pin linear switches, detailing their specifications and suitable uses.

Official Product Video

Video: LEOBOG Hi75 Aluminum Alloy Wired Mechanical Gaming Keyboard. This video provides a visual overview of the keyboard's design, features, and functionality.

WARRANTY & SUPPORT

LEOBOG provides a standard manufacturer's warranty for this product. Please refer to the warranty card included in your packaging for specific terms and conditions. For technical support, troubleshooting assistance, or warranty claims, please contact LEOBOG customer service through their official website or the retailer where you purchased the product.