

Manuals.plus /

› MYSTILUCK /

› MYSTILUCK Stylus Pen for iPad 11th & 10th Gen - User Manual

## MYSTILUCK WKZP027A

# MYSTILUCK Stylus Pen User Manual

Model: WKZP027A

Brand: MYSTILUCK

## 1. INTRODUCTION

Thank you for choosing the MYSTILUCK Stylus Pen. This manual provides detailed instructions on how to set up, operate, and maintain your stylus pen to ensure optimal performance. This stylus is designed to enhance your iPad experience with features like fast charging, tilt sensitivity, palm rejection, and convenient multi-function buttons.



Image: The MYSTILUCK Stylus Pen in white, with extra nibs.

## 2. COMPATIBILITY

The MYSTILUCK Stylus Pen is compatible with a wide range of iPad models released from 2018 to 2025.

Please verify your iPad model before use to ensure compatibility.

- iPad Air 11" & 13" (M2)
- iPad Pro 11" & 13" (M4)
- iPad (6th, 7th, 8th, 9th, 10th, 11th Generation)
- iPad Air (3rd, 4th, 5th Generation, M2, M3)
- iPad Pro 11" (1st, 2nd, 3rd, 4th Generation)
- iPad Pro 12.9" (3rd, 4th, 5th, 6th Generation)
- iPad Mini (5th, 6th, 7th Generation)

**NOTE: This stylus is NOT compatible with iPad models released before 2018, iPhones, Android devices, or Microsoft devices.**



Image: Detailed compatibility chart for various iPad models.

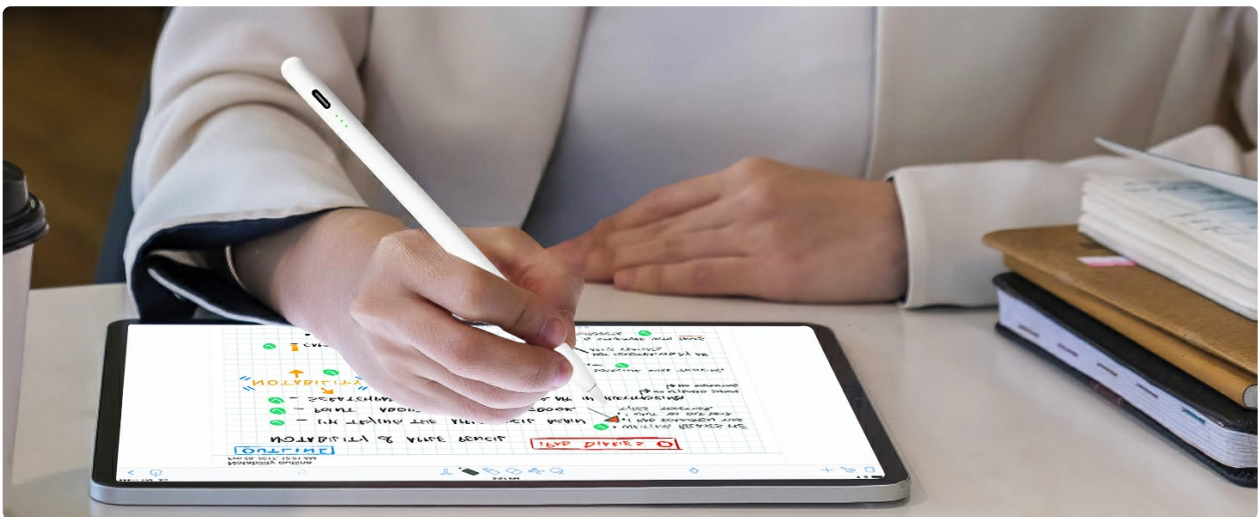


Image: Instructions on how to locate your iPad's model number for compatibility verification.

## 3. PRODUCT FEATURES

### 3.1 Multi-function Button & Bluetooth

The stylus features a multi-function button for quick access to various shortcuts when paired with your iPad via Bluetooth. Click the button to turn the stylus on, and long press to turn it off.

- **Single Click (Down Button):** Return to the previous step (Undo).

- **Single Click (Up Button):** Switch to eraser mode while writing, click again to switch back to writing mode.
- **Double Click (Down Button):** Take a screenshot.
- **Double Click (Up Button):** Open multitasking view.

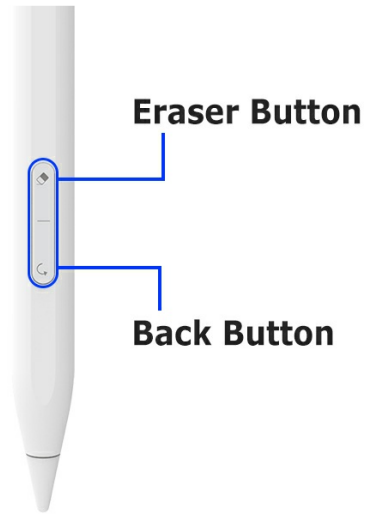
**Note:** These shortcut functions require a Bluetooth connection to your iPad.

## Add Eraser and Back Button function

**This pen not only has a writing function, but also an eraser function. It can easily erase mistakes while drawing, which is very practical**

After connecting the capacitive pen to the tablet via Bluetooth, it functions as follows:

Simply press the back button (down) to return.  
 Simply press the up button to switch between writing and erasing.  
 Simply press the down button to switch between erasing and writing.  
 Double-click on the Up button to open the multitasking view.  
 Double-click on the Down button to reduce the screen brightness.  
 The back button can be used in the Notes, Painter, NotesWriter, Notability, GoodNotes and Procreate apps.  
 The eraser function is available in GoodNotes and Procreate.



**Note:** This function requires a Bluetooth connection to use

Image: Diagram illustrating the multi-function buttons and their actions.



Image: Visual guide for using the undo/return function.



Image: Visual guide for using the eraser function.



Image: Visual guide for taking a screenshot using the stylus.



Image: Visual guide for accessing multitasking with the stylus.

### 3.2 Fast Charging & Long Battery Life

The MYSTILUCK Stylus Pen features a USB-C charging interface for rapid power replenishment. A full charge takes approximately 13 minutes and provides up to 9 hours of continuous use. The LED indicator will flash green when the battery level drops below 5%, signaling that it's time to recharge. For energy efficiency, the stylus automatically enters sleep mode after 5 minutes of inactivity.

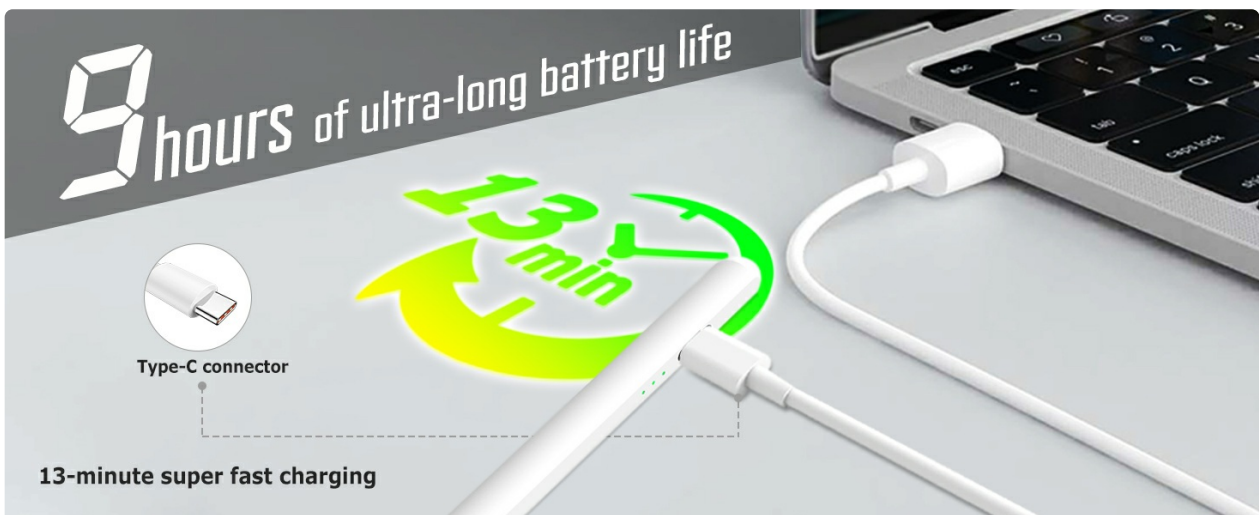


Image: Illustration of the stylus pen charging via USB-C, highlighting 13-minute fast charging for 9 hours of use.



Image: Visual representation of the stylus battery level indicator lights.

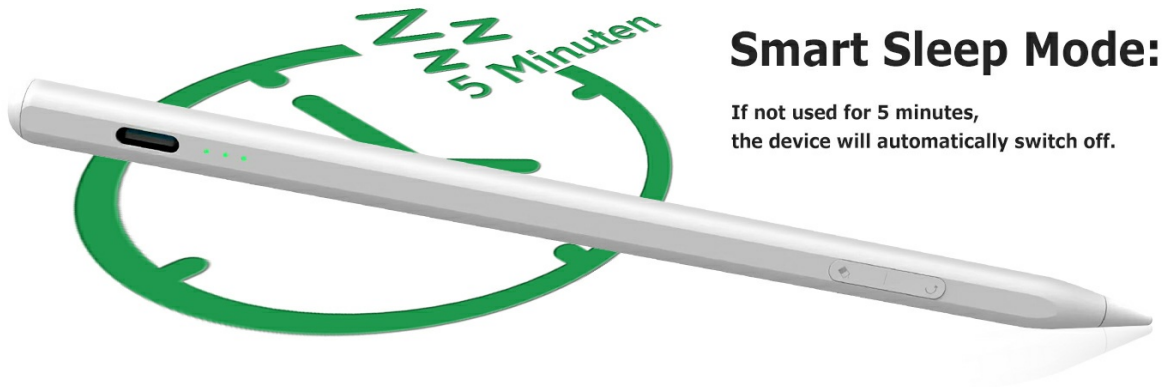


Image: Illustration showing the stylus entering smart sleep mode after 5 minutes of inactivity.

### 3.3 Tilt-sensitive & Palm Rejection

The stylus pen incorporates a tilt sensitivity sensor, allowing you to create lines of varying thicknesses and depths by simply adjusting the angle of the pen. This feature is ideal for drawing, sketching, and shading. Additionally, the stylus supports palm rejection, enabling you to comfortably rest your palm on the iPad screen while writing or drawing without unintended marks, eliminating the need for gloves.

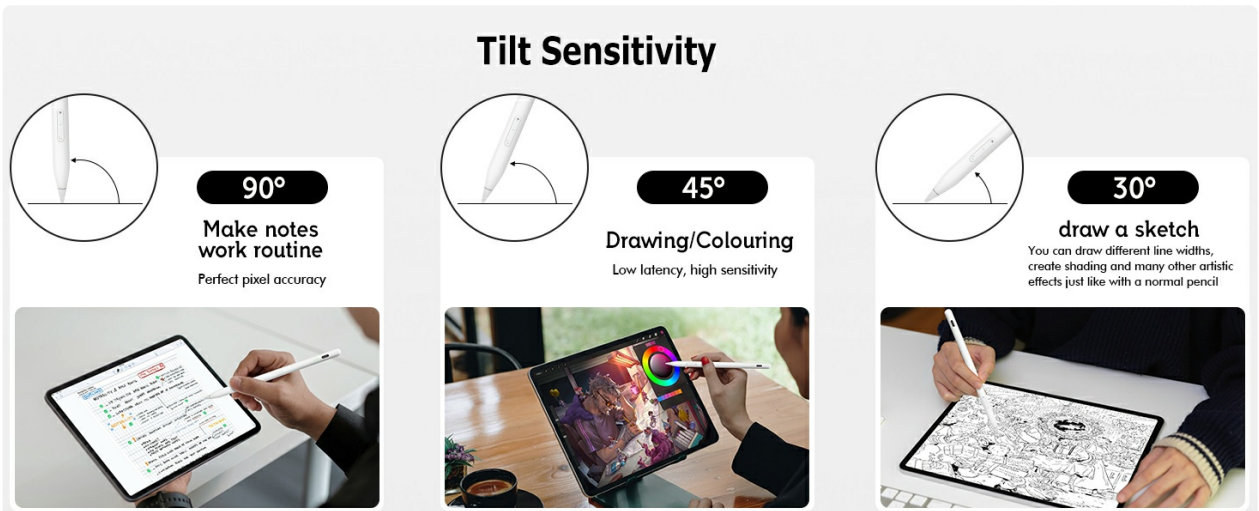


Image: Demonstrations of tilt sensitivity for notes, drawing, and drafting.



Image: A user resting their palm on the iPad screen while writing, demonstrating palm rejection.

### 3.4 Perfect Precision & Magnetic Attachment

Equipped with a new generation smart chip, the MYSTILUCK Stylus offers pixel-level accuracy up to 0.1 mm, ensuring no delays, breaks, or deviations in your writing or drawing. It feels as natural as using a traditional pencil on paper. The stylus uses a durable POM material nib, similar to original pens, providing a smooth writing experience. It also includes 4 extra replaceable nibs for extended use. Built-in dual magnets allow the stylus to securely attach to the side of your compatible iPad when not in use, preventing loss.

**NOTE: The iPad stylus does not have a pressure sensitive design.**

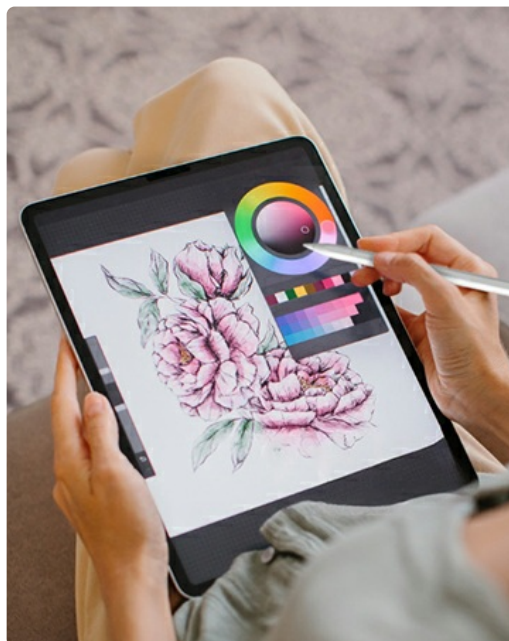


Image: Close-up of the stylus tip, highlighting pixel precision and no lag.



Image: The stylus magnetically attached to the side of an iPad.

### 3.5 Replaceable Nibs

The MYSTILUCK Stylus Pen comes with 4 additional replaceable nibs. These nibs are accurate, error-free, and allow for easy tool changes, ensuring a consistent and smooth writing experience over time.



Image: Illustration showing how to replace the nib and the included extra nibs.

## 4. SETUP

### 4.1 Turning On/Off

- **To Turn On:** Click the up/down button. The green light will illuminate, indicating it's ready for use.
- **To Turn Off:** Press and hold the up/down button for 2-3 seconds. If the green light goes out, the shutdown is successful.

# How to use it

This pen does not require a Bluetooth connection. Just press the up/down button and see the green light to turn it on. It is very easy to use.

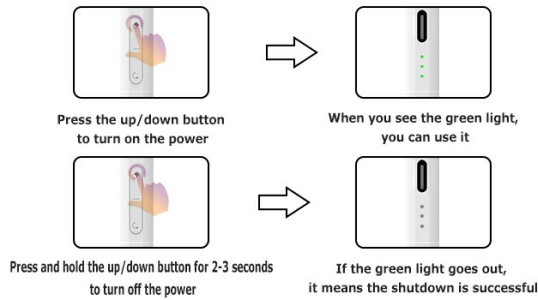


Image: Visual instructions for turning the stylus on and off.

## 4.2 Bluetooth Pairing

For full functionality, including shortcut buttons, pair your stylus with your iPad via Bluetooth. If Bluetooth is not connected, the stylus can still be used for basic writing.

1. Ensure your iPad's Bluetooth is enabled.
2. Turn on the MYSTILUCK Stylus Pen.
3. On your iPad, go to **Settings > Bluetooth**.
4. Look for "MYSTILUCK Pen" or a similar name in the list of available devices and tap to connect.

## 4.3 Disconnecting from Previous Pencils

If your iPad was previously connected to an Apple Pencil or another stylus, it is recommended to disconnect it before pairing the MYSTILUCK Stylus Pen to avoid conflicts.

1. Go to **Settings > Bluetooth** on your iPad.
2. Find the previously connected pencil (e.g., "Apple Pencil") in "MY DEVICES".
3. Tap the "i" icon next to its name.
4. Select "Forget This Device".
5. Alternatively, you can turn off Bluetooth on your iPad, then turn it back on to refresh the device list.



Image: Steps to disconnect a previously paired Apple Pencil or other stylus from your iPad.

## 5. OPERATING INSTRUCTIONS

---

Once connected, the MYSTILUCK Stylus Pen functions like a natural writing and drawing tool. Simply touch the tip to your iPad screen to begin. Utilize the tilt sensitivity for varied line thickness and the palm rejection feature for comfortable use.

### 5.1 General Usage

- **Writing:** Use the stylus for note-taking, journaling, or filling out forms.
- **Drawing/Sketching:** Leverage tilt sensitivity to create artistic effects.
- **Navigation:** Use the stylus to navigate your iPad's interface with precision.

### 5.2 Using Shortcut Functions

As detailed in Section 3.1, the multi-function buttons provide quick access to common actions. Ensure Bluetooth is connected for these features to work.

- **Undo:** Single click the lower button.
- **Eraser/Pen Toggle:** Single click the upper button.
- **Screenshot:** Double click the lower button.
- **Multitasking:** Double click the upper button.

## 6. MAINTENANCE

---

### 6.1 Charging

Charge the stylus using the provided USB-C cable. Connect the cable to the USB-C port on the stylus and a compatible power source. Refer to Section 3.2 for charging times and battery indicators.

### 6.2 Nib Replacement

If the nib becomes worn or damaged, replace it with one of the included spare nibs. Gently twist the old nib counter-clockwise to remove it, then twist a new nib clockwise until secure.

### 6.3 Cleaning

Wipe the stylus body with a soft, dry, lint-free cloth. Do not use abrasive cleaners or immerse the stylus in liquids.

## 7. TROUBLESHOOTING

---

- **Stylus not responding:** Ensure the stylus is turned on and charged. Check Bluetooth connection (if using shortcut functions).
- **Inaccurate writing/drawing:** Ensure the nib is securely attached. If the issue persists, try replacing the nib.
- **Palm rejection not working:** Ensure your iPad's software is up to date. Verify that no other stylus is connected.
- **Shortcut buttons not working:** Confirm the stylus is successfully paired via Bluetooth to your iPad.
- **Charging issues:** Ensure the USB-C cable is properly connected and the power source is functional.

If you encounter persistent issues, please refer to the Warranty and Support section for assistance.

## 8. SPECIFICATIONS

Feature	Detail
Model Number	WKZP027A
Material	Aluminum
Item Weight	0.494 ounces (14 Grams)
Battery Type	1 Lithium Ion battery (included)
Charging Time	Approx. 13-15 minutes for full charge
Continuous Use Time	Up to 9 hours
Automatic Sleep Mode	After 5 minutes of inactivity
Nibs Included	4 extra replaceable POM nibs
Connectivity	Bluetooth (for full features)

## 9. WARRANTY AND SUPPORT

MYSTILUCK is committed to providing excellent after-sales service. Your product includes a 12-month return service. For any product defects or customer dissatisfaction, please do not hesitate to contact us. We are here to assist you with any questions or concerns.

Contact Information: Please refer to the product packaging or the official MYSTILUCK store page for the most up-to-date contact details.