

## Manuals+

[Q & A](#) | [Deep Search](#) | [Upload](#)

[manuals.plus](#) /

› [BDXEJV](#) /

› [BDXEJV Creator 3-in-1 Animals Building Set Instruction Manual](#)

## BDXEJV Creator 3-in-1 Animals Building Set B0DCJSV74S

# BDXEJV Creator 3-in-1 Animals Building Set Instruction Manual

Model: Creator 3-in-1 Animals Building Set B0DCJSV74S

## INTRODUCTION

---

This manual provides detailed instructions for assembling the BDXEJV Creator 3-in-1 Animals Building Set. This set allows for the construction of 12 distinct forest and sea animal figures, which can then be combined to form a larger Animal Mech Warrior. Please read all instructions carefully before beginning assembly.

## SAFETY INFORMATION

---

**WARNING: CHOKING HAZARD – Small parts. Not for children under 3 years.**

Ensure all small parts are kept away from young children to prevent choking. Adult supervision is recommended during assembly and play, especially for younger users.

## SETUP: PACKAGE CONTENTS

---

Verify that all components are present before starting assembly. The BDXEJV Creator 3-in-1 Animals Building Set includes the following:

- **Combination 1:** Building blocks for a Tiger, which can be transformed into a Lion or an Ostrich.
- **Combination 2:** Building blocks for a Shark, which can be transformed into an Octopus or a Seahorse.
- **Combination 3:** Building blocks for a Crocodile, which can be transformed into a Snake or a Lizard.
- **Combination 4:** Building blocks for an Owl, which can be transformed into a Bird or a Scorpion.
- Individual instruction booklets for each combination.



Image: Overview of the BDXEJV Creator 3-in-1 Animals Building Set, displaying the various animal figures that can be constructed.

## OPERATING: ASSEMBLY INSTRUCTIONS

Each animal combination comes with its own set of instructions. Follow these guides carefully for successful assembly. The building blocks are designed for multiple configurations, allowing for creative transformations.

### General Building Principles

1. **Sort Pieces:** Before starting, sort the building blocks by color and shape to easily locate required parts.
2. **Follow Steps:** Adhere to the step-by-step instructions provided in each booklet.
3. **Secure Connections:** Ensure all blocks are firmly connected to prevent models from falling apart during play.
4. **Movable Joints:** Many models feature movable joints. Test these gently after assembly to ensure proper function.

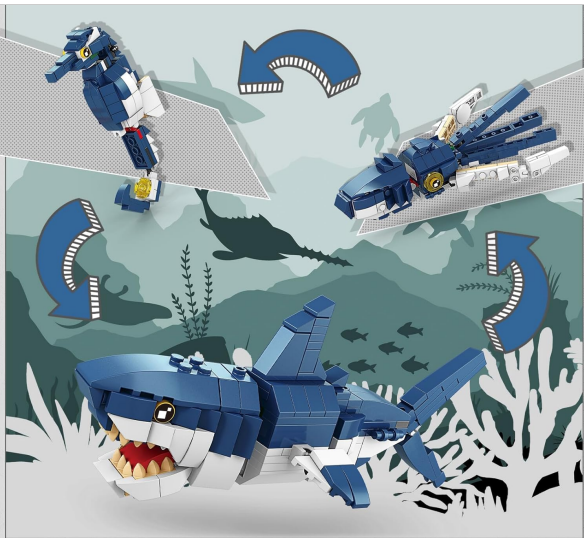
### Individual Animal Transformations

The set allows for 3-in-1 transformations within each animal category. For example, the Tiger set can be reassembled into a Lion or an Ostrich.



**tiger can become an ostrich or a lion**

Image: Illustration of the Tiger model transforming into a Lion or an Ostrich.



**shark can become octopuses or seahorses**

Image: Illustration of the Shark model transforming into an Octopus or a Seahorse.



**crocodile can become snakes or lizards**

Image: Illustration of the Crocodile model transforming into a Snake or a Lizard.



## **owl can become birds or scorpions**

Image: Illustration of the Owl model transforming into a Bird or a Scorpion.

### **Combining into the Animal Mech Warrior**

After assembling the individual animal figures, all the building blocks can be combined to construct a larger Animal Mech Warrior. Refer to the dedicated instructions for this advanced build.



**All the bricks can be combined to form a tiger fighter!**

Image: The complete Animal Mech Warrior model, assembled from all components of the set.

## CARE AND MAINTENANCE

- **Cleaning:** To clean the building blocks, wipe them with a damp cloth. Avoid harsh chemicals or abrasive cleaners.
- **Storage:** Store the blocks in a dry, cool place away from direct sunlight to prevent discoloration or warping.
- **Handling:** Handle assembled models with care, especially those with movable joints, to prevent accidental breakage.

## TROUBLESHOOTING

- **Missing Pieces:** If you find any missing pieces, carefully re-check the packaging and sorting area. Contact customer support if pieces are genuinely missing.
- **Loose Connections:** Some connections may feel less secure than others. Ensure blocks are pressed firmly together. If a connection remains consistently loose, it may be due to a manufacturing variation; consider using a small amount of hobby glue for display models, but this is not recommended for models intended for

frequent reassembly.

- **Difficulty Following Instructions:** The instructions are visual. Pay close attention to the orientation and placement of each block. If a step is unclear, try looking ahead to the next few steps for context.

## SPECIFICATIONS

---

<b>Product Dimensions</b>	3 x 10 x 7 inches
<b>Item Weight</b>	1.21 pounds
<b>ASIN</b>	B0DCJSV74S
<b>Manufacturer Recommended Age</b>	6 years and up
<b>Manufacturer</b>	SHANTOU PINGAO TECHNOLOGY INDUSTRIAL CO., LTD

## WARRANTY AND SUPPORT

---

For warranty information or customer support regarding the BDXEJV Creator 3-in-1 Animals Building Set, please refer to the contact details provided on the product packaging or visit the official BDXEJV brand store online.

**BDXEJV Store:** [Visit the BDXEJV Store on Amazon](#)