

VILTROX DC-X2

VILTROX DC-X2 DSLR Camera Field Monitor User Manual

Model: DC-X2

INTRODUCTION

The VILTROX DC-X2 DSLR Camera Field Monitor is a professional-grade touchscreen monitor designed to enhance your photography and videography experience. Featuring a 2000-nit high-brightness display, 4K full HD 1920x1080 resolution, and a 6-inch IPS panel, it ensures crystal-clear image quality even in challenging lighting conditions. This manual provides detailed instructions for setting up, operating, and maintaining your DC-X2 monitor.

WHAT'S IN THE BOX

Upon unboxing your VILTROX DC-X2 monitor, please verify that all the following components are included:

- DX-X2/D-X3 monitor *1
- Hard-shell carry case
- Custom pan-tilt head
- NP-F550 battery
- Quick-detach sunshade
- Custom screen protector
- HDMI cable
- Mini HDMI cable
- Electronic manual
- Warranty card
- USB-C power cable



Image: The VILTROX DC-X2 monitor displayed with its comprehensive set of accessories, including cables, battery, sunshade, and mounting head.

SETUP

1. Attaching the Pan-Tilt Head

Secure the custom pan-tilt head to your camera's hot shoe or a compatible mounting point. Ensure it is firmly tightened to prevent wobbling during use.

2. Mounting the Monitor

Attach the VILTROX DC-X2 monitor to the pan-tilt head. The monitor features a robust design for secure attachment.

3. Powering the Monitor

The DC-X2 supports multiple power supply options:

- **NP-F Series Lithium Batteries:** Insert a compatible NP-F series battery into the battery slot on the rear of the monitor.
- **DC IN 12-18V/2A:** Connect the provided DC power adapter to the DC IN port for continuous

power.

- **Type-C (≥9V/3A):** Use a Type-C cable with a power bank or compatible power source for flexible power options.



Image: Visual representation of the three power input options: Type-C, DC IN, and NP-F battery slot.

4. Connecting to Camera

Connect your DSLR or mirrorless camera to the monitor using the appropriate HDMI or Mini HDMI cable. The monitor supports up to 4K 30Hz input/loop-through.

OPERATING INSTRUCTIONS

1. Power On/Off

Press and hold the power button located on the side of the monitor to turn it on or off. A green indicator light will confirm power status.

2. Touchscreen Interface

The DC-X2 features an intuitive touchscreen interface. Tap on icons and slide controls to navigate menus and adjust settings. The main menu provides quick access to various monitoring functions and system settings.

3. Customizable Shortcut Keys

The monitor includes 4 customizable shortcut keys (F1-F4) for quick access to frequently used functions. These can be configured via the system settings menu to suit your personalized usage habits, greatly improving shooting efficiency.



Image: Close-up view of the VILTROX DC-X2 monitor highlighting the four customizable shortcut keys on its side.

PROFESSIONAL MONITORING FEATURES

The DC-X2 monitor is equipped with a comprehensive suite of professional monitoring tools to assist with accurate focus and exposure:

- **Parade Waveform:** Visualizes the luminance and chrominance levels of your video signal.
- **Vector Graph:** Displays color information, helping to ensure accurate color balance.
- **Brightness Histogram:** Shows the distribution of tones in your image, aiding in exposure control.
- **Auxiliary Focus (Focus Peaking):** Highlights in-focus areas with a selectable color (e.g., red, green, blue) for precise manual focusing.
- **Audio Column (Volume Bar):** Displays audio levels to prevent clipping.
- **Image Flip:** Flips the image horizontally or vertically, useful for various camera setups.
- **False Color:** Uses a spectrum of colors to represent different exposure levels, helping to identify overexposed or underexposed areas.
- **Zebra Crossing:** Indicates areas of overexposure with zebra stripes.
- **Custom 3D LUT:** Supports importing and storing custom 3D LUTs via a USB-A interface for on-set color grading and preview.
- **Aspect Ratio Markers:** Provides various aspect ratio guides (e.g., 4:3, 16:9, 2.35:1) for precise framing.
- **Center Mark & Safe Area:** Helps with composition and ensuring critical elements are within broadcast-safe zones.

Professional monitoring assistance

COMPREHENSIVE AND PRECISE CONTROL



Audio Column



Histogram



Vector Diagram



Parade Waveform



Full Waveform



LUT Table



Focus Peaking



Fake Color



Zebra Crossing



Monochrome



Mirror Flip



Image Freeze

Image: Icons representing the various professional monitoring functions available on the VILTROX DC-X2 monitor.

AUXILIARY MONITORING

Professional auxiliary tools to help you focus and expose accurately



Image: A visual overview of the auxiliary monitoring tools, including histogram, vector, parade, full waveform, 3D LUT, focus peaking, false color, and more.

3D LUT Application

The DC-X2 supports importing and storing custom 3D LUTs (Look-Up Tables) from a USB-A drive. This feature allows you to apply specific color grades or camera profiles directly to your monitoring feed, providing a more accurate representation of your final output.

3DLUT application

- BUILT IN DIVERSIFIED LUT SELECTION



- SUPPORT LUT IMPORT AND STORAGE

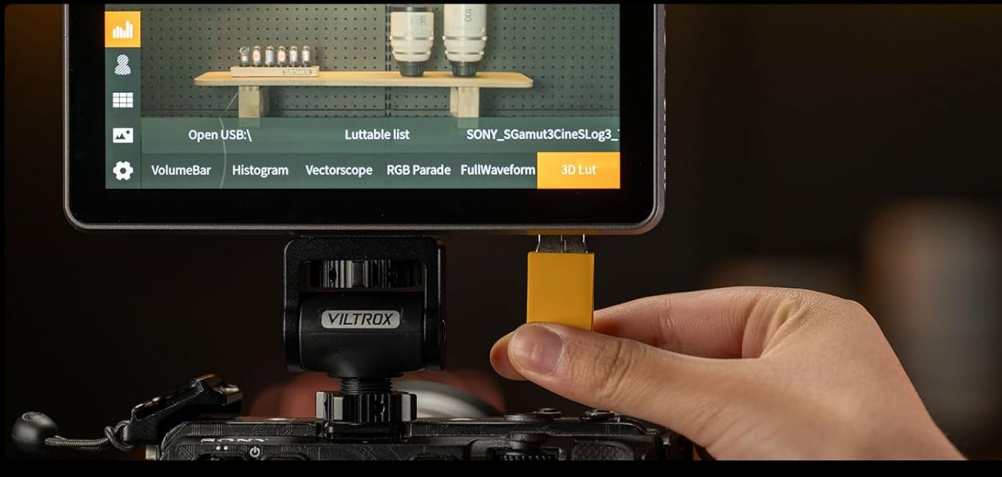


Image: The monitor screen showing the 3D LUT selection menu and a USB drive connected for LUT import.

SUNSHADE INSTALLATION

The VILTROX DC-X2 includes a quick-detach sunshade designed to improve screen visibility in bright outdoor conditions. To install, simply align the sunshade with the monitor's frame and press until it clicks into place. The sunshade can be folded for compact storage and also provides protection for the screen when closed.



Image: The VILTROX DC-X2 monitor shown with its quick-release lens hood attached, demonstrating its use in bright environments.

SPECIFICATIONS

Feature	Specification
Product Dimensions	6.1 x 0.98 x 3.86 inches
Item Weight	2.86 pounds
Item Model Number	DC-X2
Standing Screen Display Size	6.0 inches
Aspect Ratio	16:9
Resolution	1920 x 1080 (FHD 1080p)
Image Brightness	2000 nits
Image Contrast Ratio	1000:1
Viewing Angles	160°
Color Calibration	SRGB/Rec.70
Refresh Rate	30Hz (4K input) / 60Hz (display)
Total USB Ports	1 (USB-A for LUT import)
Voltage	12 Volts (DC)
Manufacturer	VILTROX





DC-X Series Parameter Overview Table		Differences	Similarities
 DC-X3  DC-X2	VS	 DC-X3 Input Interface : HDMIIN、SDIIN Output Interface: HDMI OUT、SDI OUT Product Weight : ≈350g Product Dimensions: 155.4x98.4x30mm	Display Screen : 6-inch IPS Touchscreen Screen Resolution : 1920x1080 Aspect Ratio : 16:9 1000:1 Screen Contrast : 1000:1 Refresh Rate : 60Hz Screen Brightness : 2000cd/m Viewing Angle : 160° Pixel Density : 360PPI Color Gamut of the Screen : 100%±3% sRGB/Rec.709 Bit Depth : 8Bit Audio Output : 3.5mm Headphone Jack USB Port : Supports USB Port Upgrade. Import of 3D LUT Files Cooling Fan: Included Power Interface: DC 12-18V/2A、Type-C>9V/3A
		 DC-X2 Input Interface : HDMIIN Output Interface: HDMI OUT Product Weight : ≈324.5g Product Dimensions: 155.4x98.4x26.8mm	

Image: A comparison table highlighting the differences and similarities between the VILTROX DC-X2 and DC-X3 models, including display screen, resolution, contrast, brightness, and viewing angles.

Intelligent temperature control for calm response

ALL ALUMINUM BODY, HIGH-EFFICIENCY



Image: An exploded view of the VILTROX DC-X2 monitor showing its internal cooling fan and all-aluminum body for efficient heat dissipation.

If you encounter any issues with your VILTROX DC-X2 monitor, please refer to the following common troubleshooting steps:

- **No Power:** Ensure the battery is fully charged or the DC power adapter is securely connected. Check the power source.
- **No Signal:** Verify that the HDMI/Mini HDMI cable is correctly connected to both the camera and the monitor. Ensure the camera's output settings are compatible with the monitor's input (e.g., 4K 30Hz).
- **Screen Flickering/Distortion:** Check cable connections. Try a different HDMI cable. Ensure the monitor's firmware is up to date.
- **Touchscreen Unresponsive:** Power cycle the device. If the issue persists, perform a factory reset via the system settings menu.
- **Overheating:** Ensure the monitor's fan is not obstructed. Operate in a well-ventilated area. The intelligent temperature control system is designed to manage heat effectively.

For more detailed troubleshooting or issues not listed here, please consult the electronic manual provided or contact VILTROX customer support.

WARRANTY & SUPPORT

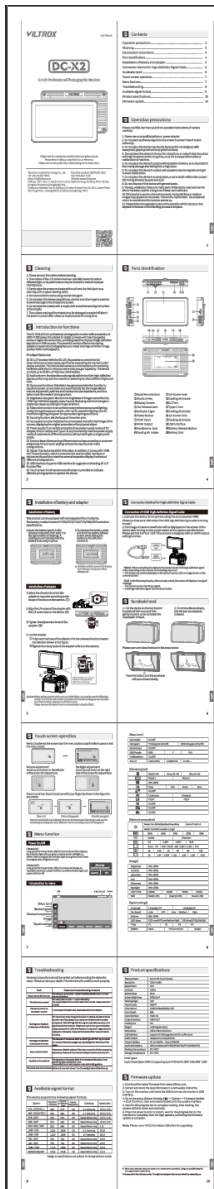
The VILTROX DC-X2 DSLR Camera Field Monitor comes with a standard manufacturer's warranty. Please refer to the warranty card included in your package for specific terms and conditions regarding coverage and duration.

For technical support, product inquiries, or warranty claims, please visit the official VILTROX website or contact their customer service department. Contact information can typically be found on the warranty card or the VILTROX brand store on Amazon.

Note: Keep your purchase receipt as proof of purchase for warranty purposes.

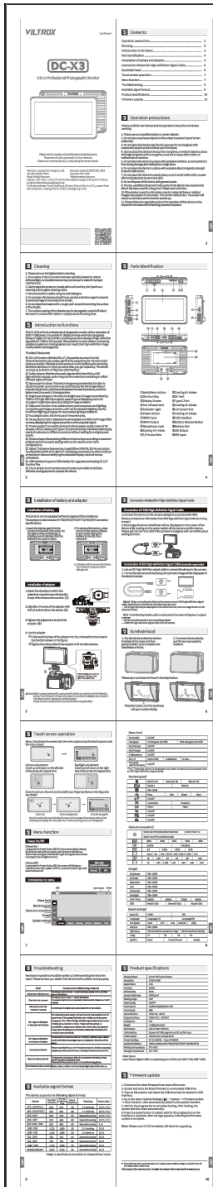
© 2025 VILTROX. All rights reserved.
This manual is subject to change without notice.

Related Documents - DC-X2



[Viltrox DC-X2 LED Light Manual and Specifications](#)

Official manual and specifications for the Viltrox DC-X2 LED light, detailing features, operation, and technical details for photographers and videographers.



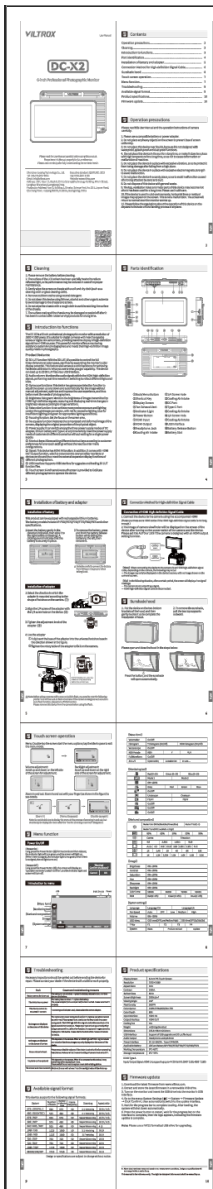
[Viltrox DC-X3 Camera Accessory User Manual](#)

Official user manual for the Viltrox DC-X3 camera accessory, providing comprehensive instructions, specifications, features, and troubleshooting guidance for optimal use.



[Syma X2 Gyro Quadcopter Instruction Manual](#)

Comprehensive instruction manual for the Syma X2 Gyro 2.4G 4 CH Remote Control Quadcopter, covering setup, operation, flight controls, safety precautions, troubleshooting, and parts.

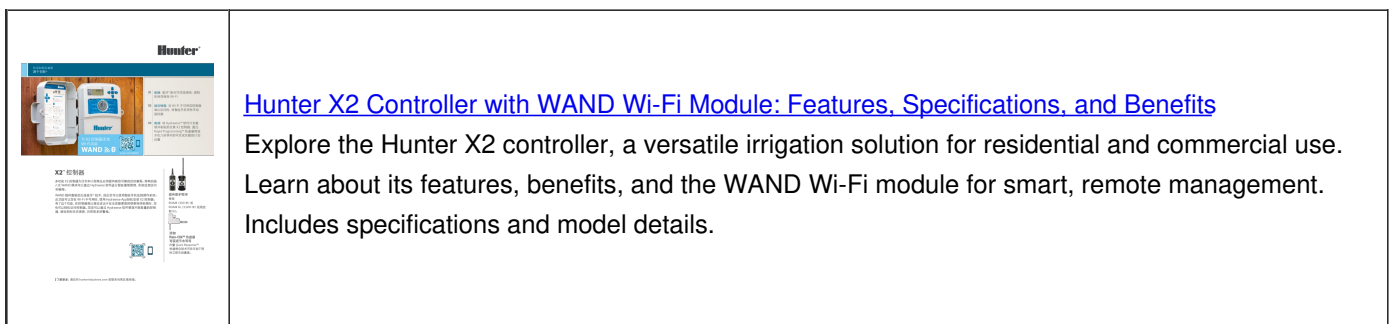


[Viltrox DC-X2 6-inch Professional Photography Monitor User Manual](#)

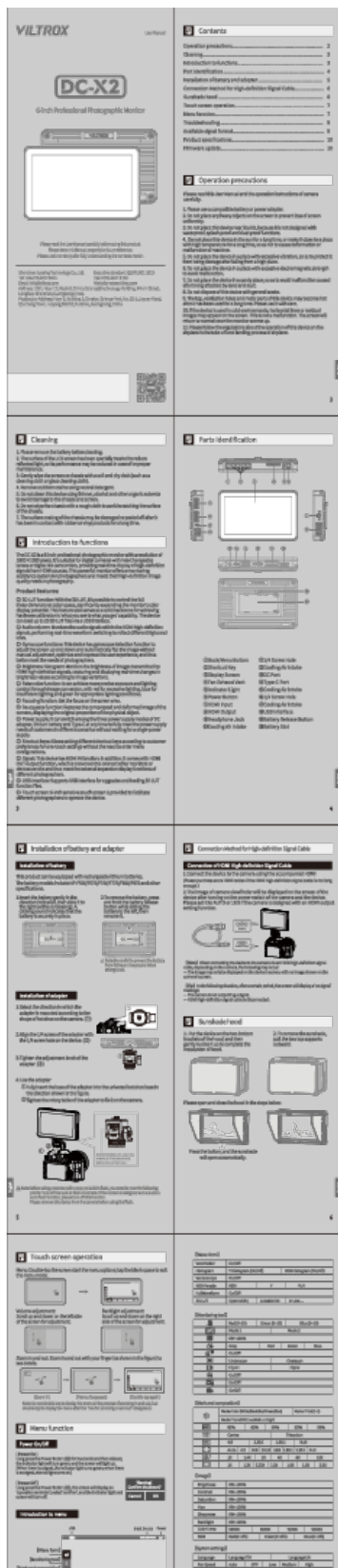
This user manual provides detailed instructions for the Viltrox DC-X2, a 6-inch professional photography monitor. It covers features such as 3D LUT, audio columns, gyroscope function, brightness histogram, false color, focus assist, and more. Learn about installation, operation, troubleshooting, and specifications.

[Viltrox DC-550 Pro 5.5-inch Touchscreen HD Monitor User Manual](#)

This user manual provides detailed instructions for the Viltrox DC-550 Pro, a 5.5-inch touchscreen HD monitor with a resolution of 1920x1080 pixels. It covers features, operation, installation, troubleshooting, and specifications for professional photography and videography.



Documents - VILTROX – DC-X2



[Viltrox DC-X2 6-inch Professional Photography Monitor User Manual](#)

This user manual provides detailed instructions for the Viltrox DC-X2, a 6-inch professional photography monitor. It covers features such as 3D LUT, audio columns, gyroscope function, brightness histogram, false color, focus assist, and more. Learn about installation, operation, troubleshooting, and specifications.

lang: score:20 filesize: 13.98 M page_count: 6 document date: 2025-07-07

[pdf] Declaration of Conformity

EG Konformitätserklärung Our Valued Customer DownloadViltrox photographic monitor DC X2 X3 Rollei

Download Center28694 28696 Konf Viltrox Monitor signedrollei en viltrox dc x2 x3 ind 1722432788515

filename 1722432788wpdm 28694 signed wpdmdl 2480 refresh 68a7a070df7e71755816048

CenterViltrox signed28694 68a7a070df7e71755816048rollei 68b303be021c11756562366

68b303b5474561756562357rollei 674e9b7a14d441733204858rollei Kamera kamera 1722432515376

2479 66ed4ae6421c01726827238rollei ||| ||| EG-Konformittserklrung EU-Declaration of conformity Hiermit

erklen wir, Rollei GmbH Co. KG; In de Tarpen 42, D - 22848 Norderstedt, dass die Bauart des

nachfolgend bezeichneten Gertes den unten genannten einschlgigen EG-Richtlinien entspri ||| EG-

Konformittserklrung EU-Declaration of conformity Hiermit erklren wir, Rollei GmbH Co. KG; In de Tarpen

42, D - 22848 Norderstedt, dass die Bauart des nachfolgend bezeichneten Gertes den unten genannten

einschlgigen EG-Richtlinien entspri ||| EG-Konformittserklrung EU-Declaration of conformity Hiermit

erklen wir, Rollei GmbH Co. KG; In de Tarpen 42, D - 22848 Norderstedt, dass die Bauart des

nachfolgend bezeichneten Gertes den unten genannten einschlgigen EG-Richtlinien entspri ||| EG-

Konformittserklrung EU-Declaration of conformity Hiermit erklren wir, Rollei GmbH Co. KG; In de Tarpen

42, D - 22848 Norderstedt, dass die Bauart des nachfolgend bezeichneten Gertes den unten genannten

einschlgigen EG-Richtlinien entspri

EG-Konformittserklrung EU-Declaration of conformity Hiermit erklren wir, Rollei GmbH

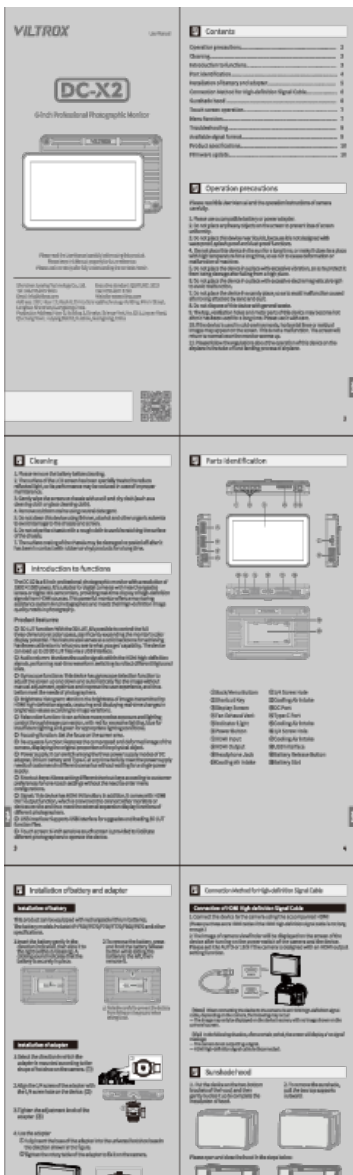
Co. KG; In de ... cordingly. Artikelbezeichnung: article description Artikelnummer:

article number: Viltrox Monitor **DC-X2**, DC-X3 28694, 28696 Type: Camera monitor

Baureihe/Model: Technische Daten: Technical datas ...

lang:en score:19 filesize: 95.83 K page_count: 1 document date: 2024-07-24

Rollei	
EG-Konformitätserklärung EU-Declaration of conformity	
Hiermit erkläre ich, Rollei GmbH & Co. KG, in der Tarpen 42, D - 22848 Norderstedt, dass die Bauart des nachfolgend bezeichneten Gerätes den unten genannten einschlägigen EG-Richtlinien entsprecht und die Serie entsprechend gekennzeichnet ist. Ich bestätige, dass das Produkt den geltenden Bestimmungen entspricht und die Angaben in dieser Erklärung wahr sind.	
Produktbezeichnung: Viltrox Monitor DC-X2, DC-X3	
Arbeitsnummer: 28694, 28696	Typ: Camera monitor
Bezeichnung/Modell: DC-X2, DC-X3	Technische Daten: Technische Daten
Nennige Angaben: Technische Daten	
Einschlägige EG-Richtlinien / Relevanty EU regulations	
✓ EMV-Richtlinie 2014/53/EU	✓ Niederspannungs-Richtlinie 2014/34/EU
✓ R.F.P. Richtlinie 2011/65/EU	✓ R.C.M. Richtlinie 2011/65/EU
✓ R.C.M. Richtlinie 2011/65/EU	✓ R.C.M. Richtlinie 2011/65/EU
Hiermit bestätige ich, dass das Produkt den geltenden Bestimmungen entspricht und die Angaben in dieser Erklärung wahr sind.	
Date of issue: 2024-07-24	
Arbeitsnummer: 28694, 28696	Arbeitsnummer: 28694, 28696
Rollei GmbH & Co. KG	



Viltrox DC-X2 LED Light Manual and Specifications

Official manual and specifications for the Viltrox DC-X2 LED light, detailing features, operation, and technical details for photographers and videographers.

lang:en score:19 filesize: 13.98 M page_count: 6 document date: 2025-07-07

