



[Manuals.plus](#) /

> [GUOANVISION](#) /

> Guoanvision 4K Dual Lens Outdoor WiFi Security Camera User Manual

GUOANVISION S300

Guoanvision 4K Dual Lens Outdoor WiFi Security Camera User Manual

Model: S300 | Brand: GUOANVISION

1. INTRODUCTION

Thank you for choosing the Guoanvision 4K Dual Lens Outdoor WiFi Security Camera. This manual provides detailed instructions for the installation, operation, and maintenance of your camera. Designed for comprehensive outdoor surveillance, this camera features 4K QHD resolution, dual lenses for wide and detailed views, color night vision, two-way audio, and advanced AI tracking. Please read this manual thoroughly before use to ensure proper setup and optimal performance.

2. PRODUCT OVERVIEW

2.1 Key Features

- **4K QHD Dual Lens:** Offers superior daytime and advanced color night vision within a 30-foot range. One fixed wide-angle lens and one 360° PTZ lens for comprehensive coverage.
- **AI Tracking & Two-Way Audio:** Advanced AI algorithms detect human movement, sending instant alerts. Features a built-in microphone and speaker for real-time communication.
- **IP66 Waterproof:** Designed to withstand various weather conditions, suitable for outdoor use in rain, snow, or extreme temperatures.
- **24/7 Recording & APP Control:** Operates on 2.4GHz WiFi for uninterrupted video streaming and remote access via mobile app. Supports local SD card storage (up to 128GB, not included) and cloud storage.
- **Alexa & NVR Compatibility:** Connects with the iCsee mobile app or VMS PC application for remote viewing and control. Compatible with Alexa and NVRs supporting cameras over 6MP.



Figure 2.1: Guoanvision 4K Dual Lens Outdoor WiFi Security Camera and its mobile app interface.

3. SETUP

3.1 Physical Installation

Choose a suitable outdoor location for mounting the camera, ensuring a clear field of view and access to a power source. Use the provided mounting hardware to securely attach the camera to a wall or ceiling. Ensure the camera is positioned to cover the desired surveillance area.

3.2 App Installation & Connection

To set up your camera, follow these steps using the iCsee mobile application:

1. **Step 1:** Activate Bluetooth on your mobile device and ensure it is connected to a 2.4GHz WiFi network.
2. **Step 2:** Download the iCsee app from your device's app store.
3. **Step 3:** Register an account within the iCsee app.

4. **Step 4:** Pair the camera via Bluetooth following the in-app instructions.
5. **Step 5:** Once paired, the camera will successfully connect to your WiFi network.

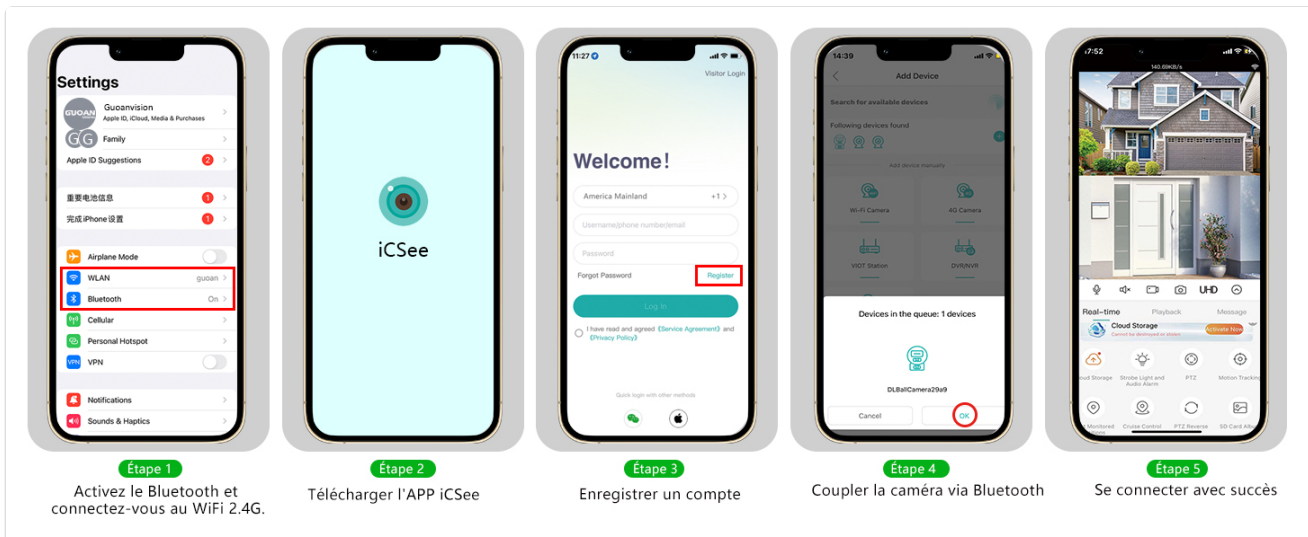


Figure 3.1: Step-by-step guide for camera setup using the iCsee app.

3.3 Network Configuration (2.4GHz WiFi)

The camera operates exclusively on 2.4GHz WiFi networks. This is due to the 2.4GHz band offering a wider coverage area and sufficient transmission rates (up to 300 Mbps) for security camera needs, which is generally more advantageous for outdoor installations compared to the shorter range of 5GHz WiFi.



Figure 3.2: Explanation of 2.4GHz WiFi preference for security cameras.

4. OPERATION

4.1 Live View and Dual Lens Functionality

The camera features a dual-lens system, allowing you to monitor two areas simultaneously. One lens provides a fixed wide-angle view, while the other is a PTZ (Pan-Tilt-Zoom) lens that can be controlled via the app to cover a 360° area. This ensures no blind spots and allows for detailed observation of specific events.

Fokus auf zwei Perspektiven

Überwachung der kritischen Punkte mit der festen Kamera und Ferneinstellung der anderen Kamera über Ihr Mobiltelefon, um das gesamte Gebiet zu überwachen

355° Pan

90° Kippen

Rotierende Linse

Fester Aufnahmewinkel

Figure 4.1: Dual lens functionality with pan and tilt capabilities.

Zoom sur deux perspectives

Angle d'enregistrement fixe
L'objectif fixe enregistre l'angle que vous souhaitez. Ne manquez aucun moment grâce au mode patrouille.

Objectif PTZ et zoom
L'objectif PTZ 360° enregistre le mouvement de tout objet en mouvement grâce à la détection de mouvement et à l'agrandissement.

Figure 4.2: Zoom on two perspectives for comprehensive monitoring.

4.2 Two-Way Audio

Communicate directly with individuals near the camera using the built-in microphone and speaker. This feature is useful for greeting visitors, instructing delivery personnel, or deterring intruders.



Figure 4.3: Two-way audio communication in action.

4.3 AI Detection & Tracking

The camera employs advanced AI algorithms to accurately detect human motion, minimizing false alarms from non-human movements like insects or leaves. Upon detection, the camera will automatically track the subject and send instant alerts to your phone. After tracking, it will return to a predefined daemon point.

AI-Erkennung und Tracking

Intelligente Verfolgung und sofortige Benachrichtigung auf Ihrem Smartphone



Figure 4.4: AI detection and tracking of human movement.

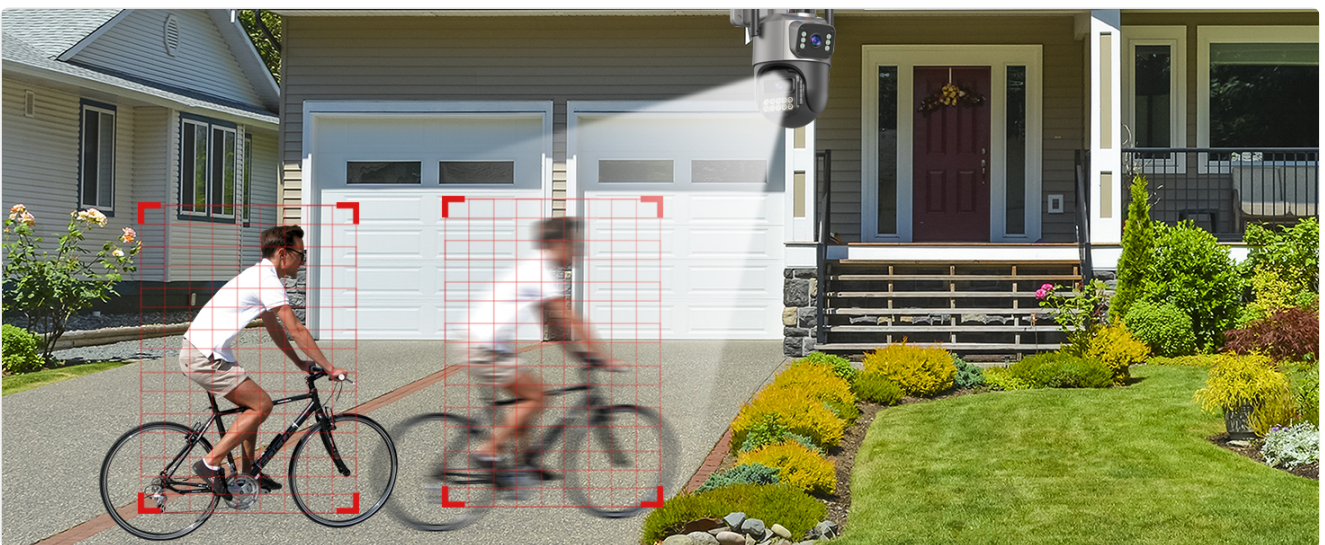


Figure 4.5: Visual representation of AI tracking.

4.4 Night Vision Modes

The camera offers excellent night vision capabilities, including advanced color night vision for detailed images in low

light and infrared night vision for complete darkness. This ensures clear surveillance 24/7.

Figure 4.6: Comparison of color and infrared night vision modes.

4.5 Recording & Storage

The camera supports continuous 24/7 recording. You can store footage locally on a Micro-SD card (up to 128GB, not included) or utilize cloud storage services for secure backup and remote access to your recordings. This provides flexible options to ensure no important moments are missed.

**Dual Lens, Dual Screen Indoor/Outdoor
Waterproof Camera**

- 4MP HD-Auflösung
- Schwenken & Kippen
- 3 Modus Nachtsicht
- Remotische Kontrolle
- Sofortige Benachrichtigungen
- Zwei-Wege-Audio
- IP66 Wasserdicht
- Auto-Tracking -Bewegungsalarm
- WIFI-Verbindung
- SD/Cloud-Speicher
- Mehrere Personen online
- 360° Vollansicht

**Ultrastarke Wärmeableitungsleistung Graphitgrauer
Keramikkühlkörper mit Doppelplatten-Design**

Figure 4.7: Flexible storage options: SD card and cloud.



Figure 4.8: Continuous and alarm recording options.

4.6 Multi-User Sharing

The camera allows multiple users to share access to the live video feed and receive alerts, making it convenient for families or small businesses to monitor the premises collaboratively.



Figure 4.9: Multi-user sharing feature.

4.7 Custom Warning Line

You can customize specific alert zones within the camera's field of view. Your phone will receive an instant notification whenever someone enters this defined warning area, allowing for precise monitoring.

Ligne d'avertissement personnalisée

Vous pouvez personnaliser la zone d'alerte en fonction de vos besoins et votre téléphone recevra une notification d'alerte dès que quelqu'un entrera dans la zone d'alerte.

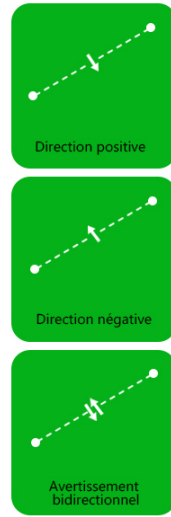
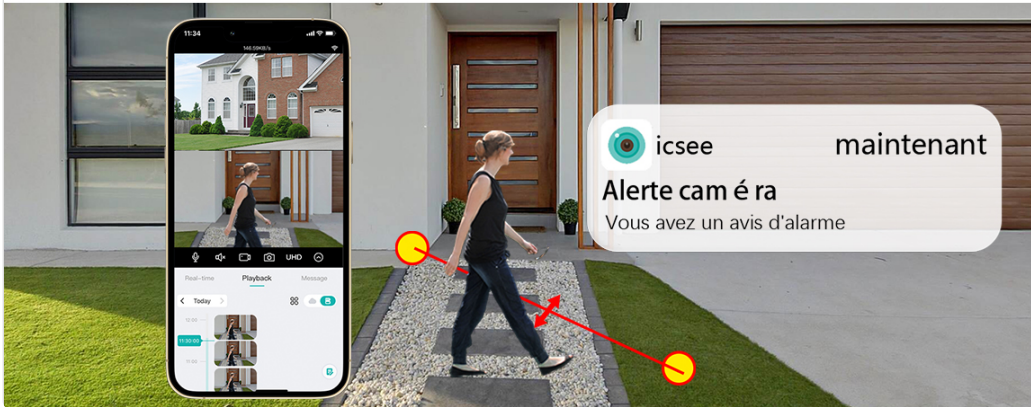


Figure 4.10: Custom warning line setup.

4.8 Multi-Screen Viewing

The iCsee app allows for simultaneous viewing of up to four camera feeds, providing comprehensive surveillance of multiple areas. You can double-click any screen in full-screen mode to zoom in and capture more details.



Figure 4.11: Multi-screen viewing interface.



Figure 4.12: Switching views and disabling ads in the app.

4.9 NVR Compatibility

The camera can be connected to an NVR (Network Video Recorder) system, provided the NVR supports cameras of 6MP resolution or higher. This allows for integration into existing security systems and enhanced recording capabilities.

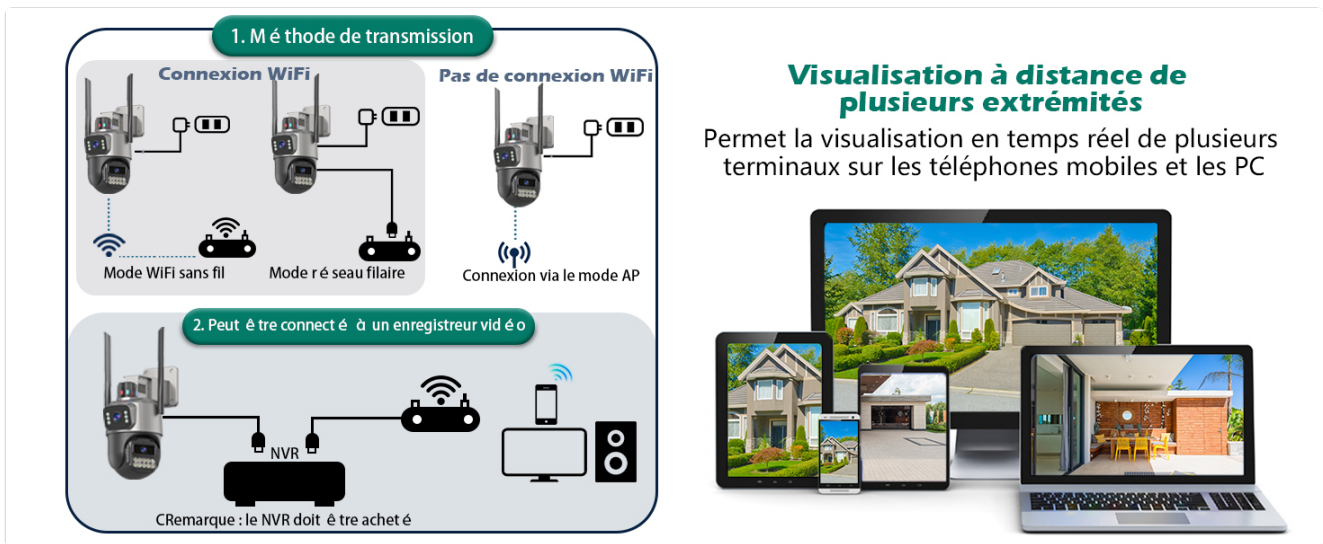


Figure 4.13: Transmission methods and NVR connectivity.

5. MAINTENANCE

- **Cleaning:** Regularly clean the camera lens with a soft, dry cloth to ensure clear image quality. Avoid using harsh chemicals or abrasive materials.
- **Firmware Updates:** Check the iCsee app periodically for firmware updates to ensure your camera has the latest features and security enhancements.
- **Power Supply:** Ensure the power connection is secure and free from damage.
- **Environmental Protection:** While IP66 rated, avoid directing high-pressure water jets directly at the camera.

6. TROUBLESHOOTING

Problem	Possible Cause	Solution
Camera not connecting to WiFi	Incorrect WiFi password; Camera too far from router; Only 5GHz WiFi available.	Verify password; Move camera closer to router or use a WiFi extender; Ensure you are connecting to a 2.4GHz network.
Frequent false alarms	Sensitivity too high; Objects like trees or flags moving in detection zone.	Adjust motion detection sensitivity in the app; Refine the custom warning line to exclude irrelevant areas.
Poor image quality	Dirty lens; Low network bandwidth.	Clean the camera lens; Ensure stable and sufficient internet speed.
Two-way audio not working	Microphone/speaker blocked; App permissions not granted.	Check for obstructions; Grant microphone and speaker permissions to the iCsee app in your phone settings.
LAN connection issues (if applicable)	Cable fault; Router configuration.	Check LAN cable integrity; Verify router settings for camera connectivity.

7. SPECIFICATIONS

Feature	Detail
---------	--------

Feature	Detail
Model Number	S300
Brand	GUOANVISION
Color	S300-4K
Material	Plastic
Form Factor	Dome
Dimensions (L x W x H)	22.86 x 22.86 x 15.24 cm; 770 grams
Wireless Communication Technology	Bluetooth, Wi-Fi (2.4GHz)
Connectivity Protocol	Bluetooth
Special Features	Two-way audio, Night vision (Color & Infrared)
Indoor/Outdoor Use	Outdoor
Power Source	Corded Electric
Controller Type	Amazon Alexa
Mounting Type	Ceiling Mount
Video Recording Resolution	4K
Recommended Uses	Outdoor Security
Included Components	S300-DE (Camera unit)

8. WARRANTY AND SUPPORT

Guoanvision provides a one-year warranty for this product. For any technical assistance, troubleshooting, or warranty claims, please contact our customer support via email. Our team is available to provide online support and address any concerns you may have.

Please refer to the product packaging or our official website for the most up-to-date contact information.