

- › [CHERRY XTRFY](#) /
- › [CHERRY XTRFY MX 3.1 Mechanical Wired Gaming Keyboard User Manual](#)

CHERRY XTRFY G80-3890HJAUS-0

CHERRY XTRFY MX 3.1 Mechanical Wired Gaming Keyboard User Manual

Model: G80-3890HJAUS-0

1. INTRODUCTION

Thank you for choosing the CHERRY XTRFY MX 3.1 Mechanical Wired Gaming Keyboard. This manual provides comprehensive instructions for setting up, operating, and maintaining your new keyboard to ensure optimal performance and longevity. Designed for gamers and professionals alike, the MX 3.1 features high-quality components and customizable options to enhance your computing experience.



Figure 1.1: CHERRY XTRFY MX 3.1 Keyboard - Top View

The MX 3.1 keyboard combines stunning visuals with a robust aluminum housing and vibrant RGB lighting. It features new CHERRY MX2A switches and a noise-damping structure, elevating your gaming and typing experience. The keyboard is built for durability and precision, offering a comfortable and responsive interface.



Figure 1.2: CHERRY XTRFY MX 3.1 Keyboard - Angled View

2. SETUP GUIDE

2.1 Package Contents

- CHERRY XTRFY MX 3.1 Mechanical Wired Gaming Keyboard
- Detachable USB-A Cable
- Screwable Detachable Metal Feet (pre-installed or included separately)
- Quick Start Guide (this manual)

2.2 Connecting the Keyboard

1. Unpack the keyboard and all accessories from the packaging.
2. Locate the detachable USB-A cable. Connect one end of the cable to the USB-C port on the keyboard.
3. Connect the other end of the USB-A cable to an available USB port on your computer.
4. The keyboard will automatically be recognized by your operating system. No additional drivers are typically required for basic functionality.

2.3 Adjusting Keyboard Height

The MX 3.1 keyboard includes screwable detachable metal feet for individual positioning and ergonomic comfort. These feet can be adjusted or removed based on your preferred typing angle.

LESS SOUND, MORE COMFORT:

Noise-damping structure for an improved typing experience



Figure 2.1: Detachable Metal Feet for Height Adjustment

3. OPERATING INSTRUCTIONS

3.1 CHERRY MX2A Switches

The CHERRY XTRFY MX 3.1 keyboard features new CHERRY MX2A switches, engineered in Germany for reliable and comfortable typing. These switches incorporate gold crosspoint precision, premium lubricant, and an innovative spring design for smoother actuation, improved acoustics, and a lifespan of 100 million keystrokes.

CHERRY MX2A SWITCHES:

Smooth typing and optimized acoustics

Available in two options:



CHERRY MX2A RED

Linear switch without click
Smooth and direct



CHERRY MX2A BROWN

Tactile switch without click
Precise and noticeable



Figure 3.1: CHERRY MX2A Switch Options

The MX 3.1 is available with different MX2A switch types, allowing you to choose based on your preferred tactile feedback and sound:

- **CHERRY MX2A Red Switch:** Offers a linear, smooth, and direct keystroke without a noticeable click. Ideal for fast-paced gaming.
- **CHERRY MX2A Brown Switch:** Provides a targeted and noticeable tactile bump without an audible click, offering a balance between typing and gaming.



Figure 3.2: Detail of a CHERRY MX2A Switch

3.2 Customizable RGB Illumination

The MX 3.1 features 16.8 million color LED illumination, which can be customized to your preference. You can choose from integrated color schemes or create your own unique lighting effects.

CUSTOMISABLE RGB ILLUMINATION WITH OVER 16 MILLION COLOURS:

Choose from numerous integrated color schemes or program your own lighting effects for individual keys



Figure 3.3: Customizable RGB Lighting

To fully customize the RGB illumination, multimedia controls, shortcuts, text modules, and macros, download and install the official CHERRY software from the CHERRY XTRFY website. The software provides an intuitive interface for advanced personalization.

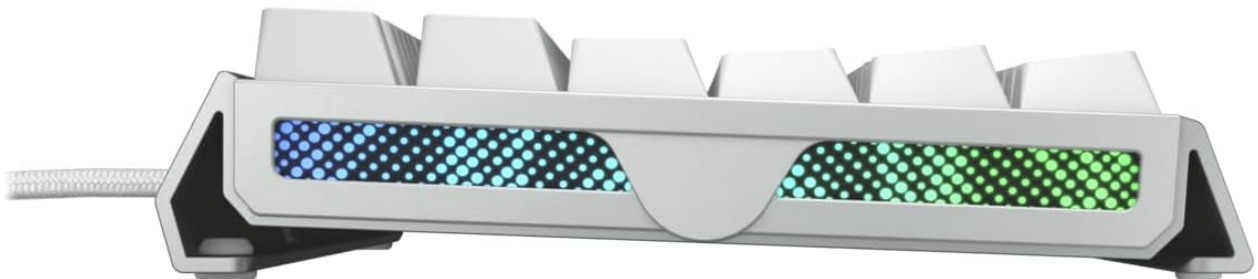


Figure 3.4: Side RGB Illumination

3.3 Noise Damping Structure

The keyboard incorporates a damping structure designed to reduce noise during fast typing and intense gaming sessions. This feature helps maintain focus and provides a more pleasant acoustic environment.



Figure 3.5: Noise Damping Feature

Integrated mechanisms further improve acoustics and contribute to ergonomic comfort, reducing strain on fingers and wrists during long periods of use.

4. MAINTENANCE

4.1 Cleaning the Keyboard

- Disconnect the keyboard from your computer before cleaning.
- Use a soft, lint-free cloth slightly dampened with water or a mild cleaning solution to wipe down the keycaps and chassis.
- For dust and debris between keys, use compressed air.
- Avoid using harsh chemicals, abrasive cleaners, or excessive moisture, as these can damage the keyboard's finish or internal components.
- Ensure the keyboard is completely dry before reconnecting it to your computer.

5. TROUBLESHOOTING

5.1 Common Issues and Solutions

| Problem | Possible Cause | Solution |
|---------|----------------|----------|
|---------|----------------|----------|

| Problem | Possible Cause | Solution |
|---------------------------------------|--|---|
| Keyboard not responding | Loose cable connection, incorrect USB port, driver issue | Ensure USB cable is securely connected. Try a different USB port. Restart your computer. |
| RGB lighting not working or incorrect | Software settings, keyboard mode | Check CHERRY software settings. Ensure keyboard is not in a mode that disables lighting. Reinstall software if necessary. |
| Keys not registering or double-typing | Debris under keycap, switch malfunction | Use compressed air to clear debris. If issue persists, contact support. |
| Function (FN) keys not working | Function lock enabled | Press CTRL + FN to toggle function lock. The FN key will glow red when engaged. |

6. SPECIFICATIONS

| Feature | Detail |
|-------------------------|--|
| Brand | CHERRY XTRFY |
| Model Number | G80-3890HJAUS-0 |
| Product Dimensions | 17.1"L x 5.4"W x 1.3"H (17.1 x 5.4 x 1.3 inches) |
| Item Weight | 3.21 pounds |
| Manufacturer | CHERRY XTRFY |
| Compatible Devices | PC |
| Connectivity Technology | USB-A |
| Keyboard Description | Mechanical Gaming |
| Recommended Uses | Gaming |
| Special Features | Adjustable RGB, Aluminum Build, Cherry MX2A Switches |
| Color | White |
| Number of Keys | 110 |
| Material | Aluminum |

7. WARRANTY INFORMATION

Specific warranty details for the CHERRY XTRFY MX 3.1 Mechanical Wired Gaming Keyboard are not provided in this manual. For comprehensive warranty terms and conditions, please refer to the official CHERRY XTRFY website or contact their customer support directly. Please retain your proof of purchase for any warranty claims.




8. CUSTOMER SUPPORT


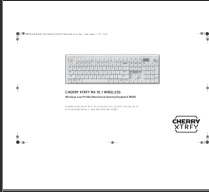

If you encounter any issues or have questions regarding your CHERRY XTRFY MX 3.1 keyboard that are not covered in this manual, please visit the official CHERRY XTRFY support page or contact their customer service team. Support resources typically include FAQs, driver downloads, and contact information for technical assistance.

Official CHERRY XTRFY Website: www.cherryxtrfy.com

© 2025 CHERRY XTRFY. All rights reserved.

Related Documents - G80-3890HJAUS-0

| | |
|---|--|
|  | <p>CHERRY XTRFY K5 PRO TMR COMPACT Gaming Keyboard Operating Manual</p> <p>Comprehensive operating manual for the CHERRY XTRFY K5 PRO TMR COMPACT gaming keyboard. Learn about setup, features, customization, safety, and troubleshooting.</p> |
|  | <p>CHERRY XTRFY MX 8.2 PRO TMR TKL Wireless Keyboard User Manual</p> <p>Comprehensive user manual for the CHERRY XTRFY MX 8.2 PRO TMR TKL Wireless Gaming Keyboard, covering setup, connectivity (USB, Bluetooth, 2.4 GHz wireless), key functions, software customization, troubleshooting, and technical specifications.</p> |
|  | <p>Cherry XTRFY K5V2 Quick Start Guide</p> <p>A concise guide to setting up and using the Cherry XTRFY K5V2 keyboard, covering USB connection, RGB illumination, and FN key functions for media, macros, and system controls. Includes instructions on downloading the full manual.</p> |

| | |
|--|---|
|  <p>The image shows a Cherry XTRFY K4V2 keyboard with a white and grey design. Below the keyboard is the cover of the 'K4V2 QUICK START GUIDE • GUIDE DE DÉMARRAGE RAPIDE'.</p> | <p>Cherry XTRFY K4V2 Quick-Start Guide</p> <p>Quick-start guide for the Cherry XTRFY K4V2 keyboard, covering USB connection, keyboard settings adjustment, and manual download. Includes RGB LED lighting and media control shortcuts.</p> |
|  <p>The image shows a Cherry XTRFY MX 10.1 WIRELESS keyboard and the cover of its 'USER MANUAL'. The manual cover features a screenshot of the keyboard's software interface.</p> | <p>CHERRY XTRFY MX 10.1 WIRELESS Mechanical Gaming Keyboard User Manual</p> <p>Comprehensive user manual for the CHERRY XTRFY MX 10.1 WIRELESS low-profile mechanical gaming keyboard, covering setup, connectivity (2.4 GHz, Bluetooth, USB), features, software, troubleshooting, and technical specifications.</p> |
|  <p>The image shows the Pulsar XBOARD MS keyboard and the cover of its 'QUICK START GUIDE'. The cover has a black and white design with a blue arrow pointing to the right.</p> | <p>Pulsar XBOARD MS Mechanical Keyboard - Quick Start Guide</p> <p>Comprehensive quick start guide for the Pulsar XBOARD MS mechanical keyboard. Covers setup, features, software configuration (LED, macros, key mapping), performance specifications, safety information, and warranty details.</p> |