

[Manuals.plus](#) /

› [LiftMaster](#) /

› LiftMaster MyQ Smart LED Garage Light (Model 837LM) User Manual

LiftMaster 837LM

LiftMaster MyQ Smart LED Garage Light (Model 837LM) User Manual

INTRODUCTION

This manual provides detailed instructions for the installation, operation, and maintenance of your LiftMaster MyQ Smart LED Garage Light, Model 837LM. Please read this manual thoroughly before using the product to ensure proper function and safety. Keep this manual for future reference.

IMPORTANT SAFETY INFORMATION

- **Read all instructions carefully** before installation and operation.
- **Disconnect power** before installing or servicing the light.
- This product is designed for **indoor use only**, specifically in garage environments.
- Do not attempt to modify or repair the light. Refer all servicing to qualified personnel.
- Ensure the light is securely mounted to a wall or ceiling to prevent falling.
- Use only with a standard electrical outlet.

PACKAGE CONTENTS

Verify that all items listed below are included in your package:

- LiftMaster MyQ Smart LED Garage Light (Model 837LM)
- Mounting Hardware (screws, anchors)
- Power Cord
- User Manual (this document)

PRODUCT OVERVIEW

The LiftMaster MyQ Smart LED Garage Light (Model 837LM) is designed to provide efficient and smart lighting for your garage. It integrates with the MyQ system for enhanced control and automation.



Figure 1: Top-down view of the LiftMaster MyQ Smart LED Garage Light (Model 837LM).

Key Features:

- **Bright LED Illumination:** Provides 1,000 lumens of bright, maintenance-free LED light.
- **Flexible Mounting:** Compact design allows for easy installation on either a wall or ceiling.
- **Plug-in Design:** Connects to a standard electrical outlet for simple setup.
- **MyQ App Control:** Manage and schedule your garage light remotely using the MyQ smartphone application.
- **Expandable System:** Up to 16 MyQ Smart LED Garage Lights can be connected per device.

- **Garage Door Opener Integration:** Functions as a garage door opener light when paired, supporting Alert-to-Close and Motion Control features.
- **Motion Sensor:** When paired with a compatible garage door opener, the integrated motion sensor illuminates the space upon detection of movement.



837LMMC

**myQ Remote
Led Light**

LiftMaster

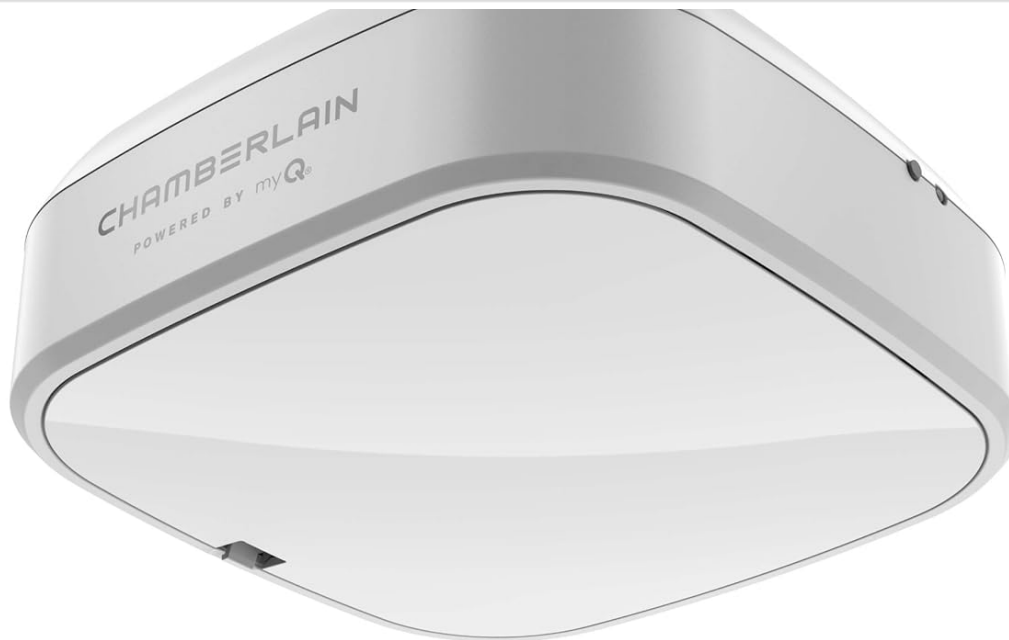
Figure 2: The LiftMaster MyQ Remote LED Light, Model 837LMMC.

SETUP AND INSTALLATION

Follow these steps to install your LiftMaster MyQ Smart LED Garage Light.

1. Choose a Mounting Location

The light can be mounted on a ceiling or a wall. Select a location that provides optimal illumination for your garage and is within reach of a standard electrical outlet. Ensure the mounting surface is stable and can support the weight of the light.



Perfect for:

- Mounting on the ceiling or a wall
- Scheduling preset times for lights to turn on/off
- Controlling lights with ease

LiftMaster

Figure 3: The MyQ Smart LED Garage Light is suitable for both ceiling and wall mounting.

2. Mount the Light

1. Mark the desired mounting points on the wall or ceiling using the light fixture as a template.
2. Drill pilot holes at the marked locations. If mounting into drywall, insert appropriate wall anchors.
3. Secure the light fixture to the mounting surface using the provided screws.

3. Connect Power

Plug the power cord of the MyQ Smart LED Garage Light into a standard electrical outlet. The light should briefly illuminate to indicate it has power.

4. Pair with a MyQ-Compatible Garage Door Opener (Optional but Recommended)

For full functionality, including motion control and Alert-to-Close features, pair your MyQ Smart LED Garage Light with a compatible LiftMaster MyQ garage door opener. Refer to your garage door opener's manual for specific pairing instructions. Generally, this involves:

- Locating the "Learn" button on your garage door opener.
- Pressing and releasing the "Learn" button.
- Activating the MyQ Smart LED Garage Light (e.g., by pressing a button on the light or through the MyQ app if already added).
- The garage door opener's light or an indicator on the light will flash to confirm successful pairing.

Note: Compatibility with specific garage door opener models is essential for advanced features. If you experience issues, consult the compatibility list on the LiftMaster website or your garage door opener's manual.

OPERATION

Manual Control

The MyQ Smart LED Garage Light can be manually turned on or off using a paired garage door opener remote or a MyQ-enabled wall control panel.

Motion Sensor Activation

When paired with a compatible garage door opener, the light will automatically turn on when motion is detected in the garage. The light will remain on for a preset duration and then turn off if no further motion is detected.

Bright Light

Fully illuminates garages with its 1000 lumens LED light.



Figure 4: The MyQ Smart LED Garage Light provides bright illumination for your garage.

MYQ APP INTEGRATION

The MyQ app provides advanced control and scheduling capabilities for your Smart LED Garage Light.

1. Download and Install the MyQ App

- Download the MyQ app from the Apple App Store or Google Play Store.
- Create a MyQ account or log in if you already have one.

2. Add Your Smart LED Garage Light to the MyQ App

1. In the MyQ app, tap the "+" icon to add a new device.
2. Select "Light" from the list of device types.
3. Follow the on-screen prompts to connect your Smart LED Garage Light to your MyQ account. This may involve pressing a button on the light or confirming its presence.

3. Control and Schedule

Once added, you can:

- Turn the light on or off remotely from anywhere.
- Set schedules for the light to turn on or off at specific times.
- Integrate the light with other MyQ-compatible devices and features.



Figure 5: Control your light with the MyQ app or your garage remote.

MAINTENANCE

- **Cleaning:** Disconnect power before cleaning. Wipe the light's exterior with a soft, damp cloth. Do not use abrasive cleaners or solvents.
- **LED Longevity:** The LED light source is designed for long-term use and does not require bulb replacement.

- **Regular Checks:** Periodically check the mounting hardware to ensure the light remains securely fastened.

TROUBLESHOOTING

Problem	Possible Cause	Solution
Light does not turn on.	No power to the outlet. Light is not properly plugged in. Faulty light.	Check the circuit breaker. Ensure the power cord is securely plugged into a working outlet. Contact LiftMaster support if the issue persists.
Light does not respond to garage door opener remote.	Light is not paired with the opener. Opener is not MyQ compatible. Remote battery is low.	Refer to "Setup and Installation" section for pairing instructions. Verify your garage door opener model is MyQ compatible. Replace the remote battery.
MyQ app cannot control the light.	Light not added to MyQ app. Wi-Fi connectivity issues. MyQ system outage.	Ensure the light is added to your MyQ account (see "MyQ App Integration"). Check your home Wi-Fi network and MyQ Gateway (if applicable). Check the MyQ app for service announcements.
Motion sensor not activating the light.	Light not paired with a compatible garage door opener. Obstruction blocking the sensor.	Ensure the light is correctly paired with a MyQ-compatible garage door opener that supports motion control. Clear any objects that might be blocking the motion sensor's field of view.

SPECIFICATIONS

Feature	Detail
Brand	LiftMaster
Model Name	837LM
Color	White
Room Type	Garage
Special Feature	Motion Sensor (when paired with compatible opener)
Control Method	Remote, MyQ App
Included Components	Light

Feature	Detail
Item Weight	1.32 Pounds
Product Dimensions	2.2 x 5.9 x 5.9 inches
Mounting Type	Wall Mount, Ceiling Mount
Fixture Type	Non-Removable LED
UPC	012381225439

WARRANTY AND SUPPORT

For warranty information and technical support, please refer to the official LiftMaster website or contact LiftMaster customer service directly. Keep your proof of purchase for warranty claims.

LiftMaster Website: www.liftmaster.com