



Manuals.plus /

- › RUIZHI /
- › RUIZHI WiFi 6 USB Adapter AX900Mbps Dual Band for PC Instruction Manual

## RUIZHI AX900Mbps

# RUIZHI WiFi 6 USB Adapter AX900Mbps Dual Band for PC

Instruction Manual

## 1. INTRODUCTION

---

This manual provides detailed instructions for the installation, operation, and maintenance of your RUIZHI WiFi 6 USB Adapter. This device offers enhanced wireless connectivity and Bluetooth capabilities for your desktop or laptop computer. Please read this manual carefully before using the product to ensure optimal performance and safety.



A close-up view of the RUIZHI WiFi 6 USB Adapter, highlighting its sleek black casing and the 'Wi-Fi 6' logo, indicating its advanced wireless capabilities.

## 2. PRODUCT FEATURES

- **Enhanced Performance:** Upgraded WiFi 6 adapter, AX900 Mbps (dual band 2.4 + 5.8 GHz) for faster internet speeds when used with a WiFi 6 router.
- **Bluetooth 5.3:** Connects up to 7 different Bluetooth devices simultaneously. (Note: Bluetooth does not support Apple phones).
- **Plug and Play:** Driver-free installation for Windows 10/11.
- **Advanced Security:** Supports WEP/WPA/WPA2/WPA3 encryption for robust network protection.

- **MU-MIMO Support:** Improves network efficiency in multi-device environments.
- **Compact and Portable:** Lightweight, all-in-one USB adapter design.



An illustration comparing the data transfer speeds of WiFi 6 (900Mbps) and WiFi 5 (433Mbps), demonstrating the performance improvement offered by the RUIZHI WiFi 6 adapter.

# Doppelfunktion Bluetooth-WiFi-Stick

WiFi 5Ghz wird empfohlen, wenn 2 bluetooth-geräte gleichzeitig verwendet werden (2,4Ghz-übertragung ist langsam)



Visual representation of the adapter's key features: WiFi 6 for high-speed internet, USB for easy connection, Bluetooth 5.3 for device pairing, and Dual Band support for flexible network access.

## 3. SETUP GUIDE

Follow these steps to install and set up your RUIZHI WiFi 6 USB Adapter:

### 1. Step 1: Insert the Adapter

Carefully insert the RUIZHI WiFi 6 USB Adapter into an available USB port on your desktop or laptop computer. Ensure it is fully seated. Avoid using USB ports already occupied by other wireless peripherals like a mouse or keyboard dongle if possible, to prevent potential interference.

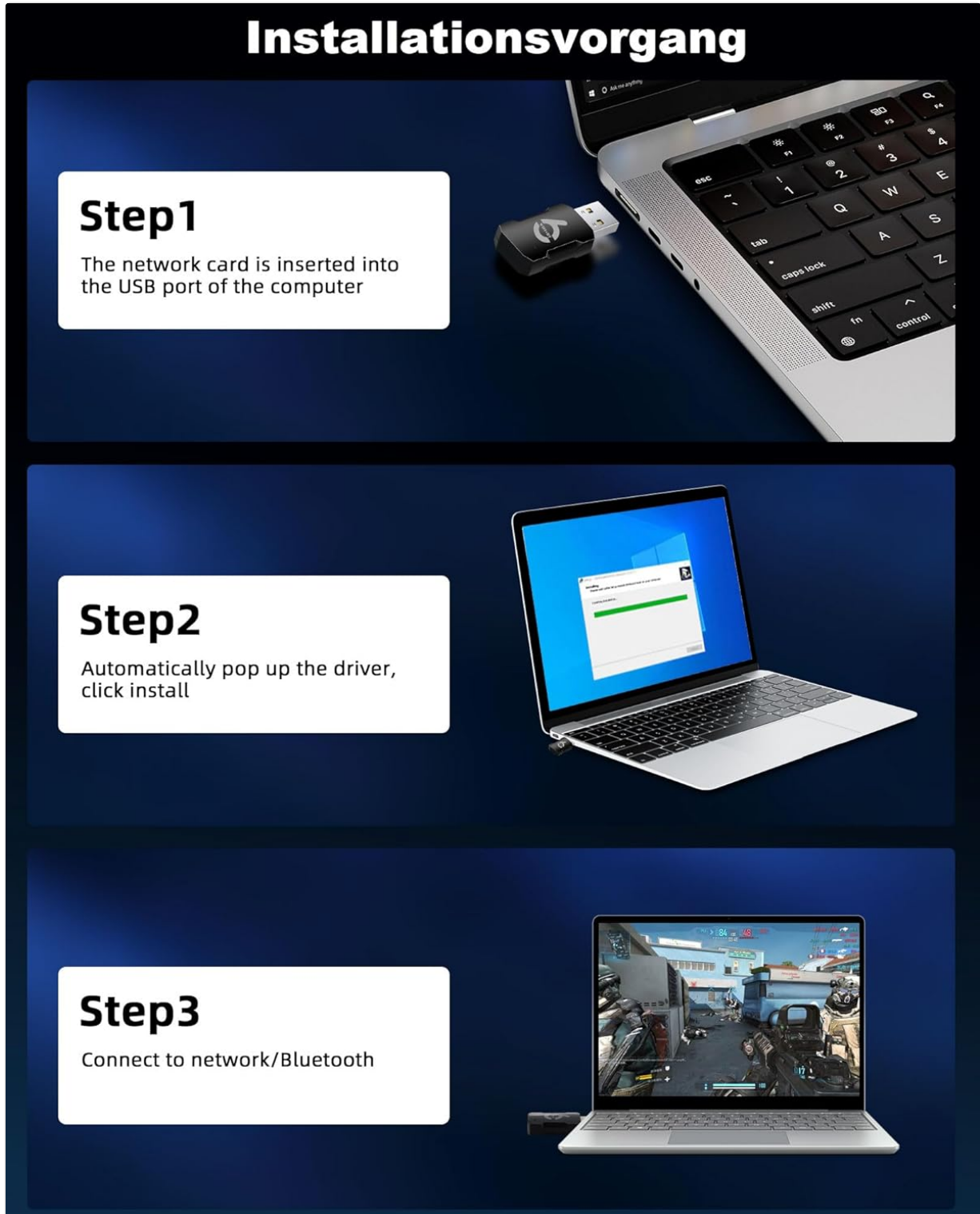
### 2. Step 2: Automatic Driver Installation

For Windows 10/11, the system will automatically detect the adapter and initiate the driver installation

process. A pop-up window will appear, prompting you to click 'Install'. Follow the on-screen instructions to complete the driver setup. No external CD-ROM or manual driver download is typically required.

### 3. **Step 3: Connect to Network/Bluetooth**

Once the driver installation is complete, you can connect to your desired Wi-Fi network or pair Bluetooth devices. Access your computer's network settings to select a Wi-Fi network or your Bluetooth settings to add new devices.



A visual guide detailing the simple three-step installation process: 1. Insert the network card into the computer's USB port. 2. The driver will automatically pop up for installation. 3. Connect to your desired network or Bluetooth device.

# Plug and Play

Leicht und tragbar, mit eingebauten Treibern,  
ist es perfekt für unterwegs.



Windows 10



Windows 11

The RUIZHI WiFi 6 USB Adapter inserted into a laptop's USB port, illustrating its plug-and-play nature and compatibility with Windows 10 and Windows 11 operating systems.

## 4. OPERATING INSTRUCTIONS

### 4.1. Wi-Fi Connectivity

- After successful driver installation, navigate to your computer's network settings.
- Select the Wi-Fi icon in the system tray (Windows) or network preferences (macOS).
- Choose your desired Wi-Fi network from the list of available networks.
- Enter the network password if prompted and click 'Connect'.
- The adapter supports dual-band (2.4 GHz and 5.8 GHz) for flexible connection options. The 5.8 GHz

band is recommended for faster speeds and less interference, especially when using multiple Bluetooth devices simultaneously.

## 4.2. Bluetooth Connectivity

- Ensure Bluetooth is enabled on your computer.
- Go to your computer's Bluetooth settings (e.g., 'Bluetooth & devices' in Windows Settings).
- Click 'Add device' or 'Pair new device'.
- Put your Bluetooth device (e.g., headphones, keyboard, mouse) into pairing mode.
- Select your device from the list that appears and follow any on-screen prompts to complete pairing.
- The adapter supports connecting up to 7 Bluetooth devices concurrently.

# Bluetooth 5.3

7 Geräte gleichzeitig verbunden

The diagram illustrates a central USB Bluetooth adapter (labeled 'WIFI+BT') connected to seven different devices. The devices are arranged around the adapter, with blue signal waves indicating connectivity. The devices are:

- Bluetooth printer
- Bluetooth keyboard and mouse
- Phone&Pad
- Bluetooth audio
- Bluetooth earphone
- Desktop
- PC
- Laptop

An infographic demonstrating the Bluetooth 5.3 capability of the adapter, showing it can connect up to 7 devices concurrently, such as printers, keyboards, mice, smartphones, tablets, audio devices, and headphones.

## 50-150m Netzabdeckung



The infographic features a central image of a black USB adapter with a silver USB-A connector. The adapter has a white Bluetooth symbol and the text 'WIFI+BT' on its side. It is positioned in the foreground, appearing to float over a 3D-rendered room. The room contains a dining table with chairs, a kitchen area, and a bedroom with a bed. Two yellow Wi-Fi signal icons are placed in the room, one near the dining table and one near the bed, indicating the network coverage area. At the bottom of the infographic, there are two blue boxes with white text: '2.4 Ghz speed up to 286Mbps' on the left and '5.0 Ghz speed up to 600Mbps' on the right.

**2.4 Ghz** speed up to 286Mbps

**5.0 Ghz** speed up to 600Mbps

An illustration depicting the network coverage provided by the adapter, showing both 2.4 GHz and 5.0 GHz bands with their respective maximum speeds of 286 Mbps and 600 Mbps, and an effective range of 50-150 meters.

## 5. MAINTENANCE

- Keep the adapter clean and free from dust. Use a soft, dry cloth for cleaning.
- Avoid exposing the adapter to extreme temperatures, humidity, or direct sunlight.
- Do not attempt to disassemble or repair the adapter yourself. This may void the warranty and cause damage.

- When not in use for extended periods, it is recommended to remove the adapter from the USB port.

## 6. TROUBLESHOOTING

---

- **Adapter Not Detected:** Ensure the adapter is fully inserted into a functional USB port. Try a different USB port. Restart your computer.
- **Wi-Fi Not Connecting:** Verify your Wi-Fi network is active and you have entered the correct password. Ensure your router is functioning correctly. Check if other devices can connect to the same network.
- **Slow Wi-Fi Speed:** Ensure you are connected to the 5.8 GHz band if available, as it generally offers faster speeds. Reduce physical obstructions between the adapter and your router. Ensure your router supports WiFi 6 for optimal performance.
- **Bluetooth Devices Not Pairing:** Ensure your Bluetooth device is in pairing mode. Check that Bluetooth is enabled on your computer. Restart both your computer and the Bluetooth device.
- **Driver Issues:** Although the adapter is plug-and-play for Windows 10/11, if issues persist, check your Device Manager for any driver conflicts or outdated drivers. Windows Update may provide necessary updates.
- **Interference:** If experiencing intermittent connectivity, try moving the adapter to a different USB port or away from other electronic devices that might cause interference.

## 7. SPECIFICATIONS

---

Feature	Detail
Brand	RUIZHI
Model	AX900Mbs
Color	Black
Compatible Devices	Desktop computer, Laptop
Hardware Interface	USB, Bluetooth
Data Link Protocol	IEEE 802.11 ax (WiFi 6), Bluetooth
Data Transfer Rate	900 Megabits per second
Operating System Compatibility	Windows (Windows 10 minimum required version)
WiFi Frequency	2.4 GHz, 5.8 GHz (Dual Band)
Bluetooth Version	5.3
Security Protocols	WEP, WPA, WPA2, WPA3
Dimensions (Approx.)	42mm (L) x 18mm (W) x 9mm (T)



A technical drawing indicating the compact dimensions of the RUIZHI WiFi 6 USB Adapter: 42mm in length, 18mm in width, and 9mm in thickness, highlighting its portable size.

## 8. WARRANTY AND SUPPORT

---

Specific warranty information for this product is not available in the provided details. For warranty claims or technical support, please refer to the seller or manufacturer's official website. Keep your purchase receipt as proof of purchase.