



Manuals.plus /

› cloblane /

› cloblane 53.7 inch Mobile Kitchen Island with Storage and Power Outlet Instruction Manual

**cloblane B0DCFSKNQ5**

# **cloblane 53.7 inch Mobile Kitchen Island with Storage and Power Outlet Instruction Manual**

**Brand:** cloblane | **Model:** B0DCFSKNQ5

---

## **INTRODUCTION**

---

This manual provides detailed instructions for the assembly, operation, and maintenance of your cloblane 53.7 inch Mobile Kitchen Island. Designed with a farmhouse style, this versatile kitchen cart features ample storage, a drop leaf countertop, a built-in power outlet, and mobile wheels for convenience. Please read this manual thoroughly before assembly and use to ensure safe and proper operation.



*The cloblane 53.7 inch Mobile Kitchen Island, showcasing its design and functionality with the drop leaf extended.*

## **SAFETY INFORMATION**

---

Please observe the following safety guidelines to prevent injury or damage to the product:

- Ensure all parts are properly secured before use.
- Do not exceed the weight capacity of 400 lbs (181 kg) for the tabletop.
- Use caution when moving on uneven surfaces to prevent tipping.
- Be careful around sharp edges during assembly and use.
- Do not allow children to play on, with, or around the cart.

## **PACKAGE CONTENTS**

---

Before beginning assembly, verify that all components and hardware are present and undamaged. The package includes:

- Island frame components
- Countertop (main and drop leaf sections)

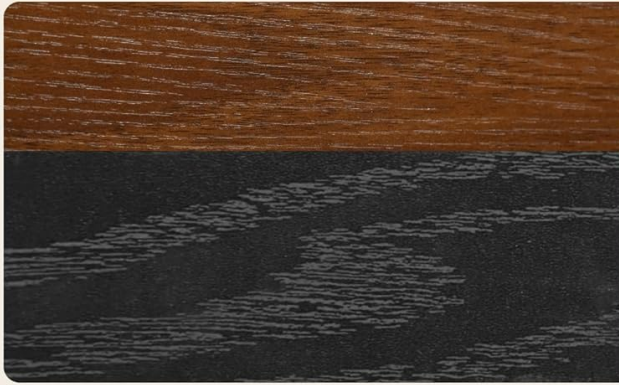
- Three drawers with hardware
- Two sliding barn doors with track and handles
- Adjustable shelves
- Five universal wheels (two lockable)
- Built-in power outlet unit (2 AC outlets, 2 USB ports)
- Spice rack and towel rack
- Assembly hardware (screws, dowels, etc.)
- Comprehensive step-by-step assembly instructions

## SETUP AND ASSEMBLY

---

Your cloplane Mobile Kitchen Island is designed for straightforward assembly. Please follow the comprehensive step-by-step instructions provided in the package. All parts and hardware are labeled to facilitate the process.

1. **Unpack:** Carefully unpack all components and lay them out on a clean, soft surface to prevent scratches.
2. **Identify Parts:** Match each part to the corresponding label in the instruction manual.
3. **Follow Steps:** Assemble the unit according to the sequential steps outlined in the included manual. Ensure all fasteners are tightened securely.
4. **Install Wheels:** Attach the five universal wheels to the base, ensuring the two lockable wheels are positioned for easy access.
5. **Final Check:** Once assembled, gently test the stability and functionality of all moving parts (drawers, doors, drop leaf).



P2 Grade  
Environmental  
Material

Spice Rack &  
Towel Rack



5 Hidden Wheels  
2 Lockable  
For Better Supporting



*An infographic providing precise measurements of the kitchen island, along with weight capacities for the tabletop, shelves, and drawers.*

## OPERATING INSTRUCTIONS

Familiarize yourself with the various features of your kitchen island for optimal use.

### Drop Leaf Countertop

The island features an extendable drop leaf countertop to provide additional workspace when needed.

- **To Extend:** Gently lift the drop leaf section until it is level with the main countertop. Pull out the support bracket from underneath to secure it in place.
- **To Retract:** Push the support bracket back into its stored position and carefully lower the drop leaf until it rests against the side of the island.

## Drope Leaf Countertop Design



Saving Space



Ideal for Small & Big Kitchen



Expanding Preparation Space



*Diagram demonstrating how the drop leaf countertop can be extended to increase workspace.*

### Built-in Power Outlet

The integrated power strip allows you to conveniently power kitchen appliances directly on the countertop.

- Plug the island's power cord into a standard wall outlet.
- Use the 2 AC outlets for larger appliances and the 2 USB ports for charging mobile devices.
- Ensure the power cord is not pinched or damaged.



*A close-up of the built-in power strip, featuring two AC outlets and two USB ports for convenient appliance use.*

## Sliding Barn Doors and Adjustable Shelves

The two sliding barn doors provide access to interior storage with adjustable shelves.

- **Opening/Closing:** Gently slide the doors along the top track using the handles.
- **Adjusting Shelves:** The interior shelves can be repositioned to accommodate items of various heights. Remove the shelf, adjust the shelf pins to the desired height, and reinsert the shelf.



# Ample Storage Kitchen Island

Can be easily hidden and kept clean and tidy



Adjustable Shelf



47" W Countertop



3 Large Drawers

Overview of the kitchen island's storage capabilities, including adjustable shelves behind sliding barn doors and three spacious drawers.

## Drawers

The three smooth-glide drawers are ideal for organizing tableware and other kitchen essentials.

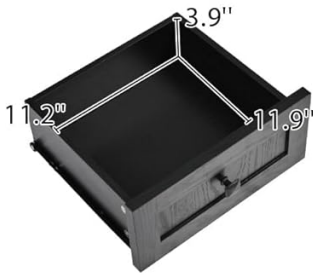
- Pull the drawer handles to open and push to close. Avoid forcing drawers.
- Do not overload drawers beyond their weight capacity.

## Mobile Wheels

The island is equipped with five universal wheels for easy mobility, two of which are lockable for stability.

- **To Move:** Ensure both lockable wheels are in the unlocked position.
- **To Secure:** Push down the locking levers on the two lockable wheels to prevent the island from moving.

# Product Dimensions



**Size:** 53.75 x 28.75 x 36.5 inches



**Tabletop** 400LBS

**Drop Leaf** 33LBS

**Shelf** 110LBS

**Drawer** 15LBS



*This image illustrates the P2 grade environmental material, the integrated spice rack, and the five hidden wheels, two of which are lockable for stability.*

## Product Demonstration Video

Your browser does not support the video tag.

*This video demonstrates the key features of the cloblane 53.7" Mobile Kitchen Island, including the extendable drop leaf, smooth-gliding drawers, sliding barn doors, adjustable interior shelves, and the mobility provided by its wheels.*

## MAINTENANCE

Proper care will ensure the longevity and appearance of your kitchen island.

- **Cleaning:** Wipe the surfaces with a dry cloth. Avoid abrasive cleaners or harsh chemicals that may damage the finish.
- **Spills:** Clean up spills immediately to prevent staining or damage to the wood.
- **Hardware:** Periodically check and tighten any loose screws or fasteners to maintain structural integrity.
- **Wheels:** Keep the wheels free of debris to ensure smooth movement.

## TROUBLESHOOTING

---

If you encounter any issues with your kitchen island, consider the following common solutions:

- **Stability Issues:** Ensure all assembly screws are tightened. Verify that the lockable wheels are engaged when the island is stationary.
- **Drawers/Doors Sticking:** Check for any obstructions in the tracks or slides. Ensure the unit is on a level surface.
- **Power Outlet Not Working:** Confirm the island's power cord is securely plugged into a functional wall outlet. Test the outlet with another device.
- **Missing Parts:** If any parts were missing upon delivery, please contact customer support immediately.

For issues not resolved by the above steps, please contact cloblane customer support.

## SPECIFICATIONS

---

Feature	Detail
Product Dimensions	53.75"L x 28.75"W x 36.5"H (with drop leaf extended)
Frame Material	Engineered Wood (P2 Grade Particleboard, MDF)
Brand	cloblane
Color	Black-a
Furniture Finish	Black
Maximum Weight Recommendation (Tabletop)	400 lbs
Number of Shelves	3 (adjustable)
Power Outlet	2 AC Outlets, 2 USB Ports
Wheels	5 Universal Wheels (2 lockable)
Product Care Instructions	Wipe with Dry Cloth
ASIN	B0DCFSKNQ5
Date First Available	August 7, 2024

## WARRANTY INFORMATION

---

Warranty information for the cloblane 53.7 inch Mobile Kitchen Island is not explicitly provided in the product details. For specific warranty terms and conditions, please contact cloblane customer support directly.

## CUSTOMER SUPPORT

---

Should you have any questions before or after your purchase, require assistance with assembly, or need to report a missing/damaged part, please do not hesitate to contact cloblane customer support. We are committed to providing you with the most satisfactory service.

Please refer to your purchase documentation or the seller's page on Amazon for the most current contact information.

