

Loona KYO04LN01

Loona Robot Pet Dog Instruction Manual

Model: KYO04LN01

INTRODUCTION TO LOONA

Loona is an advanced AI-powered robot pet designed to be an interactive companion. Featuring ChatGPT-4o integration, voice and gesture control, and home monitoring capabilities, Loona offers a unique and engaging experience for users aged 6 and up. This manual provides essential information for setting up, operating, maintaining, and troubleshooting your Loona robot.

GETTING STARTED: SETUP

What's in the Box

Your Loona package includes the following components:

- Loona Robot (x1)
- Charging Dock (x1)
- Type-C USB Cable (x1)
- Game Prop Kit (x1)
- User Manual (x1)
- Guidebook (x1)
- Warranty Card (x1)

Voice commands



Hello Loona!

It's sunny

Today's weather?



Figure 1: Contents of the Loona product package.

Initial Setup and Charging

Before first use, ensure Loona is fully charged. Place the charging dock in an open area free from obstructions on either side or in front to facilitate automatic recharging. Connect the Type-C USB cable to the charging dock and a power source.

Automatic recharge



Figure 2: Loona robot positioned on its charging dock.

Loona will automatically return to its charging dock when its battery is low. A full charge typically takes approximately 2.5 hours. For optimal performance, ensure Loona's camera and ToF depth sensor surfaces are clean and that Loona operates in a well-lit environment.

Connecting to the Loona App

Download the official Loona app from your device's app store. The app is essential for full functionality, including accessing games, customizing settings, and exploring advanced features. While initial setup may require a few reboots, the app provides a comprehensive interface for managing Loona. Mobile hotspots can be used to connect Loona, allowing interaction anywhere.

OPERATING LOONA

Voice Commands

Loona responds to various voice commands. To activate Loona, say "Hello Loona!" The lights on Loona's screen will

indicate that she is listening. Speak clearly and in a quiet environment for best recognition.

Your browser does not support the video tag.

Video 1: Loona Quick Guide - Voice Command Instruction. This video demonstrates how to use voice commands to interact with Loona, including waking her up and issuing commands like "Fire" and "Lightning."

Examples of voice commands include:

- "Hello Loona!" (to wake up)
- "Fire" (for a specific action)
- "Wind blowing" (for a specific action)
- "Lightning" (for a specific action)
- "Go play by yourself" (to encourage autonomous play)

For a comprehensive list of voice commands, refer to the "Home > AI & Talk > See More" section within the Loona app.



Figure 3: Loona interacting via voice commands.

Gesture Control and Interaction

Loona is equipped with advanced sensors that allow her to recognize faces and understand various gestures. She can follow you and respond to physical interactions like a real pet. Examples include fist bumps, looking left/right/up, and beckoning gestures.

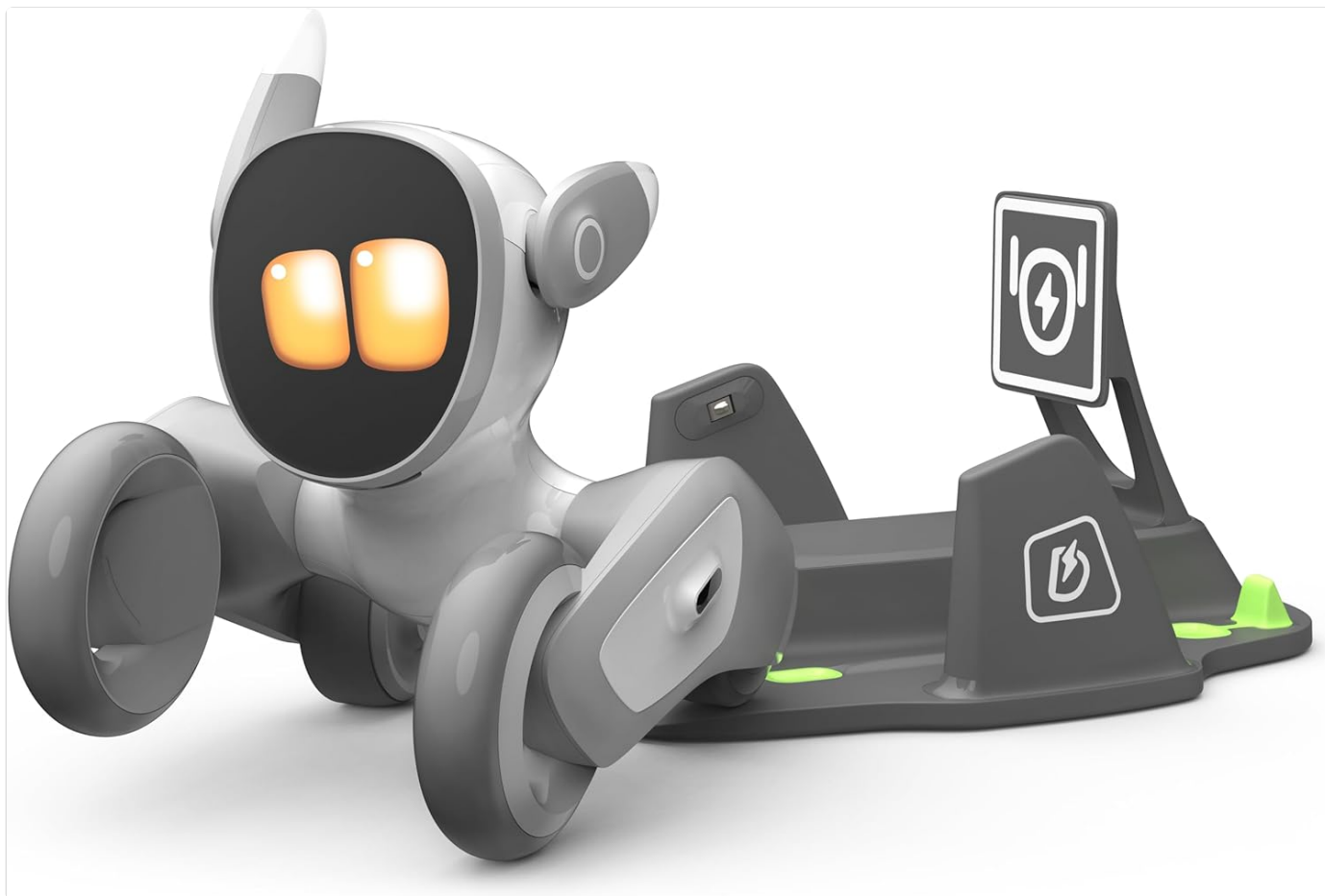


Figure 4: Examples of gesture control and physical interaction with Loona.

Playtime and Games

Loona enjoys playtime and can chase laser pens, fetch balls, and interact with objects in your home. The Loona app provides a variety of games and quizzes to enhance the interactive experience. Loona can also engage in role-playing conversations and generate creative content like poems, powered by ChatGPT-4o.

Powered by ChatGPT



GPT-4o

● Recipe for dinner

● Draw me a picture

● Why the sky is blue?

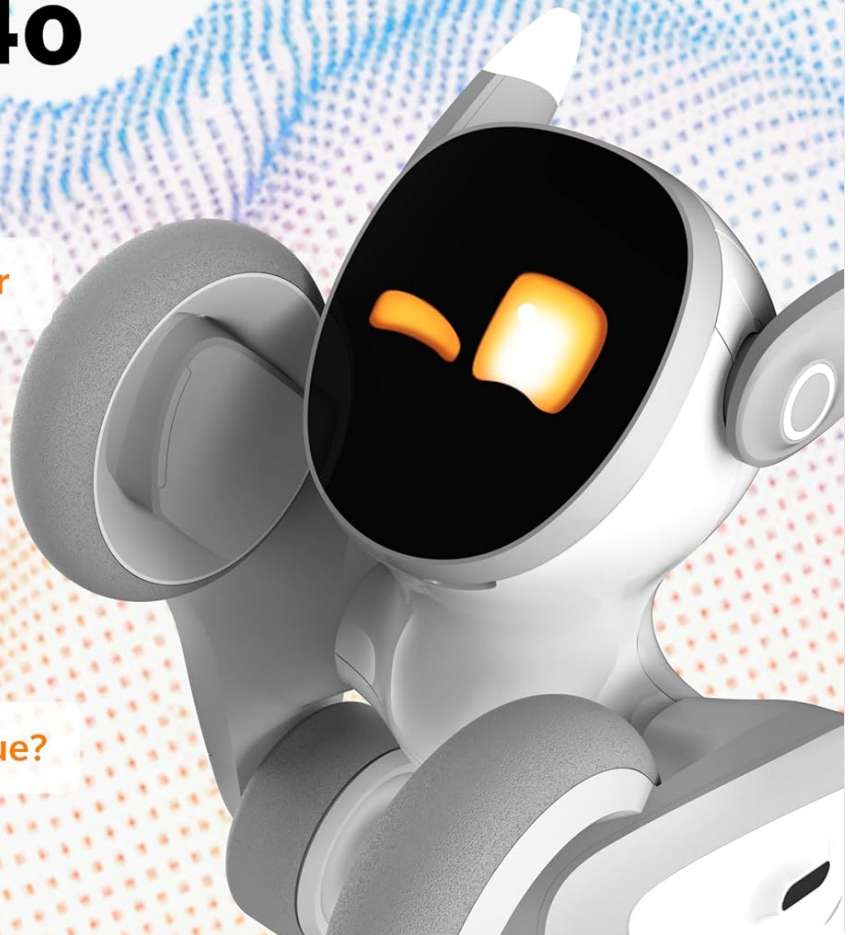


Figure 5: Loona's ChatGPT-4o capabilities.

Home Monitoring

Loona can function as a home monitor using its integrated camera and speaker. This feature allows you to keep an eye on your home remotely when you are away. You can control Loona and view its camera feed through the app.

Remote assistant



Figure 6: Remote assistance and home monitoring via the Loona app.

MAINTENANCE

Cleaning

Regularly clean the surfaces of Loona's camera and ToF depth sensor to ensure optimal performance and accurate recognition. Use a soft, dry cloth to gently wipe these areas.

Battery and Charging

Loona is designed for automatic recharging. When the battery runs low, Loona will attempt to return to its charging dock independently. The automatic recharge 2.0 system helps Loona remember and match charging routes in different scenarios to improve success rates. A full charge takes approximately 2.5 hours, providing about 90 minutes of continuous runtime at 40% screen brightness.

Physical Care

While Loona is built to be robust, it is still a delicate electronic device. Avoid dropping Loona from high places, as this can cause damage such as minor cracks to the housing. Loona's front wheels are made of hard plastic; playing on thin carpets can help prevent scratches if used on hard surfaces. Loona is an indoor pet and should not be played with outside.

TROUBLESHOOTING

Voice Command Sensitivity

If Loona is playing or performing, its own sounds may reduce its sensitivity to recognizing "Hello Loona." In such cases, speak "Hello Loona" loudly and clearly. Additionally, voice commands cannot be used simultaneously while controlling Loona through the app.

Charging Issues

If Loona has difficulty finding its charging station, especially if it has roamed too far, you can use the remote control feature in the app to guide it back to the dock for self-docking. Ensure the charging dock is placed in an open area without obstructions.

Movement and Obstacle Avoidance

Loona's movements can be fast and energetic. If Loona frequently bumps into objects, ensure its GPT vision ability is enabled in the app for improved obstacle avoidance. There is a setting in the app to make Loona less hyperactive, allowing it to roam more slowly. Always ensure Loona operates in a well-lit environment for optimal sensor performance.

SPECIFICATIONS

Feature	Detail
Product Dimensions	19 x 18 x 18 inches
Item Weight	2.42 pounds
Model Number	KYO04LN01
Manufacturer Recommended Age	6 years and up
Batteries	1 Lithium Ion battery (included)
Manufacturer	BYD

WARRANTY INFORMATION

Loona comes with a **1-Year Warranty** against manufacturer defects. Please refer to the included Warranty Card for detailed terms and conditions.

SUPPORT

For further assistance, technical support, or inquiries regarding your Loona robot, please visit the official Loona Petbot store on Amazon or contact customer service through the Loona app. Keep your Loona app updated to receive the latest features and improvements.

Official Loona Store: [Loona Petbot Store](#)

