

Saker Multi-function Scribing Tool and Contour Gauge

Saker Multi-function Scribing Tool and Contour Gauge User Manual

1. INTRODUCTION

This manual provides detailed instructions for the Saker Multi-function Scribing Tool and the Saker Connection Contour Gauge. These tools are designed to assist in precise marking, contour duplication, and shape transfer for various construction, woodworking, and DIY projects. Please read this manual thoroughly before using the products to ensure proper operation and longevity.



Image 1.1: The Saker Multi-function Scribing Tool and the Saker Connection Contour Gauge, shown together as a kit.

2. PRODUCT OVERVIEW AND COMPONENTS

2.1 Saker Multi-function Scribing Tool

The Saker Multi-function Scribing Tool is constructed from aluminum alloy, ensuring durability and precision. It features a deep hole pencil for marking and various adjustable components for different scribing modes.

HIGH ACCURACY AND QUALITY



- | | |
|---|--------------------------|
| ① Deep hole pencil holder | ⑤ Compass pins |
| ② Removable deep hole pencil | ⑥ Bracket holding knob |
| ③ Deep hole pencil holding knob | ⑦ Aluminum alloy base |
| ④ Deep hole pencil holder angle adjustment knob | ⑧ Aluminum alloy bracket |

Image 2.1: Labeled components of the Saker Multi-function Scribing Tool. Key parts include the deep hole pencil holder, removable deep hole pencil, deep hole pencil holding knob, deep hole pencil holder angle adjustment knob, compass pins, bracket holding knob, aluminum alloy base, and aluminum alloy bracket.

2.2 Saker Connection Contour Gauge

The Saker Connection Contour Gauge is designed for duplicating irregular shapes. It features a series of movable pins that conform to the shape of an object, which can then be locked for tracing. The gauge is made from durable materials and can be connected to additional units for extended length.



Image 2.2: The Saker Connection Contour Gauge shown with a deep hole pencil and replacement lead refills.

3. SETUP

3.1 Saker Multi-function Scribing Tool

1. **Pencil Installation:** Insert the deep hole pencil into the deep hole pencil holder. Secure it by tightening the deep hole pencil holding knob.
2. **Adjusting Tightness:** The tightness of the pencil holder and other adjustable components can be modified by adjusting their respective knobs to achieve desired resistance for different scribing tasks.

3.2 Saker Connection Contour Gauge

1. **Initial Inspection:** Ensure all pins move freely. If pins are too loose or too tight, check the locking mechanism.
2. **Connecting Multiple Gauges (Optional):** For longer contours, multiple Saker Connection Contour Gauges can be linked. Align the connection points of two gauges and slide them together until they securely interlock.



Image 3.1: Illustration of the embedded connection and locking mechanism of the Saker Connection Contour Gauge. The top image shows how to disassemble or connect, while the bottom image shows how to push the slider to the left to fix the pins in place.

4. OPERATING INSTRUCTIONS

4.1 Using the Saker Multi-function Scribing Tool

The scribing tool offers multiple modes for various applications:

- **Edge Track Mode:** Use to scribe lines parallel to an edge.
- **Contour Mode:** Adjust the tool to follow irregular contours for precise marking.
- **Compass Mode:** Configure the tool to draw circles or arcs.
- **Edge Rule Mode:** For marking along a straight edge.

To switch between modes, adjust the pencil holder and bracket holding knob to achieve the desired configuration. Ensure all adjustments are locked securely before scribing to maintain accuracy.

FIVE USAGE MODES

Meet your different usage needs.



Edge Track Mode



Contour Mode

Compass Mode



Edge Rule Mode



Compass Mode

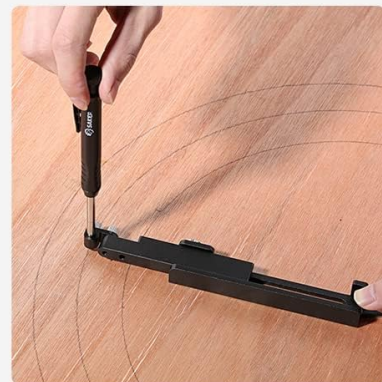


Image 4.1: Visual representation of the five primary usage modes for the Saker Multi-function Scribing Tool, including Edge Track Mode, Contour Mode, and Compass Mode.

4.2 Using the Saker Connection Contour Gauge

1. **Step 1: Connection (if needed):** Connect multiple contour gauges if the object's length exceeds a single gauge.
2. **Step 2: Press and Lock:** Gently press the contour gauge against the object whose shape you wish to duplicate. Ensure the pins fully conform to the contour. Once the shape is captured, push the locking mechanism to fix the pins in place.
3. **Step 3: Trace:** Transfer the locked contour gauge to the material you intend to cut or mark. Use the deep hole pencil or another suitable marking tool to trace the duplicated shape onto the material.
4. **Step 4: Finish:** The shape is now accurately transferred and ready for cutting or further work.

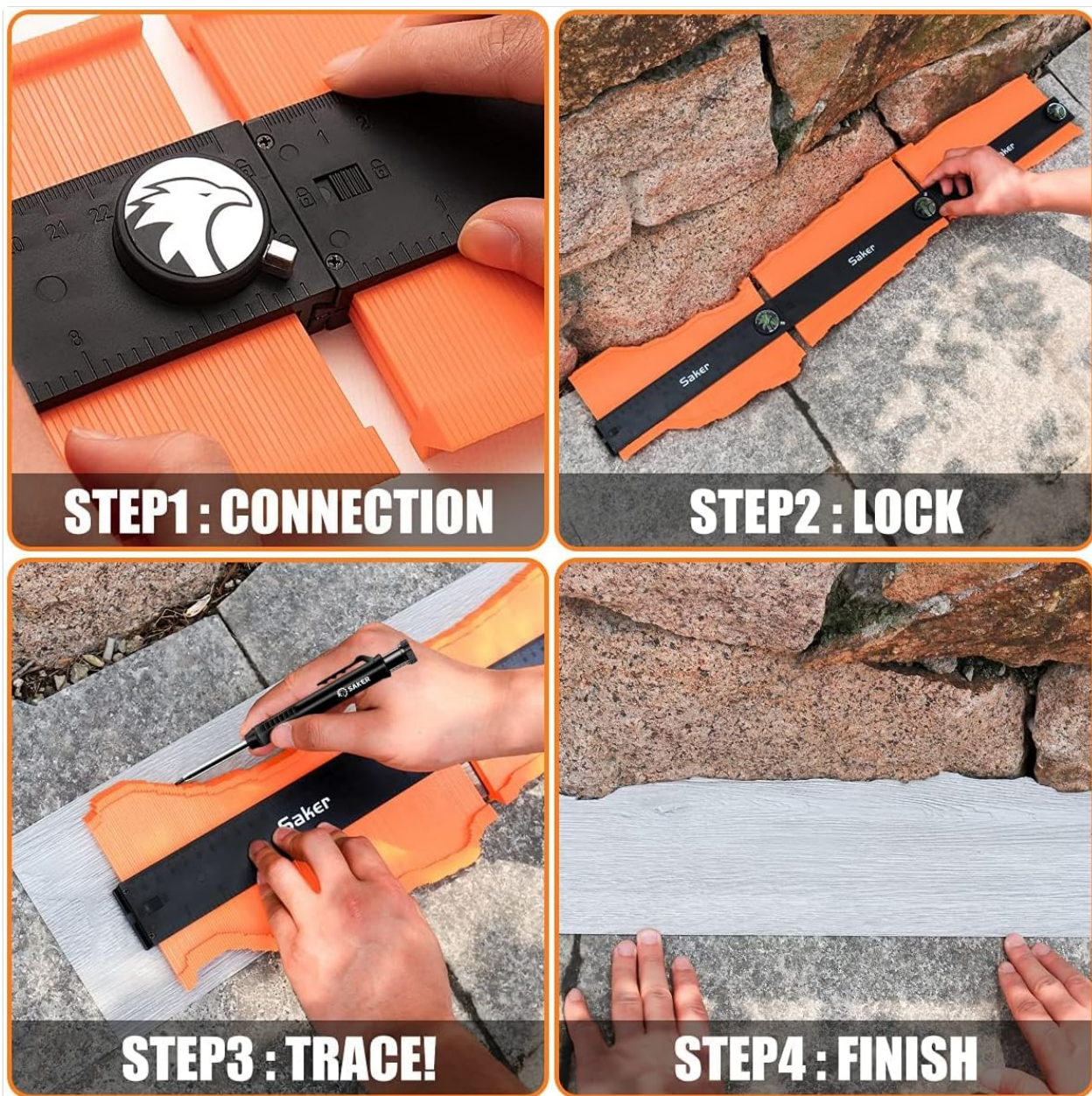


Image 4.2: A four-step visual guide demonstrating the use of the Saker Connection Contour Gauge: 1. Connection, 2. Lock, 3. Trace, and 4. Finish.

5. MAINTENANCE

- **Cleaning:** After each use, wipe the tools with a clean, dry cloth to remove dust, debris, or pencil marks. Avoid using harsh chemicals or abrasive cleaners.
- **Storage:** Store the tools in a dry place, away from direct sunlight and extreme temperatures. Keep them in their original packaging or a protective case to prevent damage.
- **Pencil Refills:** Replace the deep hole pencil lead as needed. Ensure the correct lead size and hardness (2H) are used for optimal performance.



Image 5.1: A comparison illustrating the advantage of the deep hole pencil for marking in confined spaces compared to a standard pencil, highlighting its suitability for the scribing tool.

6. TROUBLESHOOTING

- **Pins not conforming properly (Contour Gauge):** Ensure the locking mechanism is disengaged before pressing against the object. Apply even pressure across the gauge.
- **Scribing lines are inconsistent (Scribing Tool):** Check that the pencil is securely tightened and the angle adjustment knob is firm. Ensure the tool is held steadily during operation.
- **Difficulty connecting multiple Contour Gauges:** Verify that the connection points are clean and free of debris. Ensure proper alignment before attempting to slide them together.

7. SPECIFICATIONS

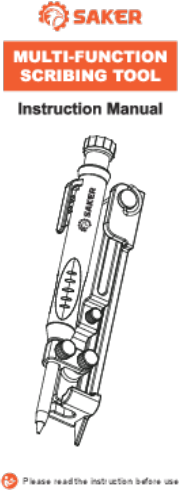
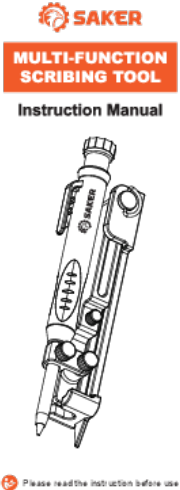
- **Brand:** Saker
- **Material (Scribing Tool):** Aluminum Alloy
- **Material (Contour Gauge):** Durable Plastic (specific type not provided, but generally ABS or similar)
- **Pencil Lead Degree (Hardness):** 2H


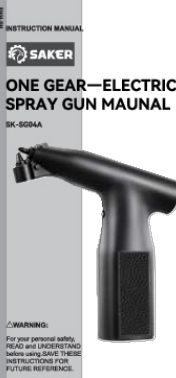
- **Ink Color (Pencil):** Black
- **Point Type (Pencil):** Chisel
- **Writing Instrument Form:** Scriber
- **Grip Type (Pencil):** Soft
- **ASIN:** B0DCF4HJT4
- **First Available Date:** August 7, 2024

8. WARRANTY AND SUPPORT

For warranty information or technical support, please refer to the contact details provided with your purchase or visit the official Saker website. Keep your proof of purchase for any warranty claims.

Related Documents - Multi-function Scribing Tool and Contour Gauge

	<p>SAKER Multi-Function Scribing Tool Instruction Manual</p> <p>Comprehensive instruction manual for the SAKER Multi-Function Scribing Tool, detailing its features, usage for marking and scribing on various materials, compass functionality, and troubleshooting tips.</p>
	<p>Saker Multi-Function Scribing Tool Instruction Manual</p> <p>This manual provides instructions for using the Saker Multi-Function Scribing Tool, including its various components and functions such as deep hole pencil holding, angle adjustment, and compass functionality. It also includes troubleshooting tips for the deep hole pencil.</p>

 <p>INSTRUCTION MANUAL FOAM CANNON DUAL CONNECTOR ACCESSORY</p> <p>To reduce the risk of injury, the user must read and understand the Operator's Manual before using this product. Save these instructions for future reference.</p>	<p>Saker Foam Cannon Dual Connector Accessory Instruction Manual</p> <p>Instruction manual for the Saker Foam Cannon Dual Connector Accessory, detailing its features, installation, operation, and safety precautions for use with pressure washers. Supports up to 4000 PSI.</p>
	<p>SAKER Mini Electric Chainsaw Instruction Manual (SK1804D, SK1806D, SK1806F)</p> <p>Comprehensive instruction manual for the SAKER Mini Electric Chainsaw models SK1804D, SK1806D, and SK1806F. Covers specifications, safety warnings, operation, maintenance, and troubleshooting.</p>
 <p>INSTRUCTION MANUAL SAKER ONE GEAR—ELECTRIC SPRAY GUN MAUNAL SK-SG04A</p> <p>WARNING: For your personal safety, READ AND UNDERSTAND before using SAVE THESE INSTRUCTIONS FOR FUTURE REFERENCE.</p>	<p>Saker SK-SG04A One Gear Electric Spray Gun Instruction Manual</p> <p>This instruction manual provides detailed information on the Saker SK-SG04A One Gear Electric Spray Gun, covering its specifications, package contents, operating instructions, and troubleshooting tips for optimal performance.</p>