

## DFHYTHU Replacement Filter for SilverCrest SSR 3000 A1

# DFHYTHU Replacement Filter for SilverCrest SSR 3000 A1 Vacuum Cleaner

User Manual

## 1. INTRODUCTION

---

This manual provides essential information for the proper installation, operation, and maintenance of your DFHYTHU replacement filter, designed for compatibility with the SilverCrest SSR 3000 A1 vacuum cleaner. Adhering to these instructions will help ensure the filter's optimal performance and extend the lifespan of your vacuum cleaner.

## 2. SAFETY INFORMATION

---

Please read and understand all safety instructions before handling or installing the filter. Improper handling can lead to damage to the filter or the vacuum cleaner.

- Always disconnect the vacuum cleaner from the power supply before attempting any installation, removal, or maintenance of the filter.
- Keep filters out of reach of children.
- Do not wash the filter with water unless explicitly stated in the vacuum cleaner's original manual for this type of filter. Washing can damage the filter material and reduce its effectiveness.
- Inspect the filter for any damage before installation. Do not use a damaged filter.

## 3. PRODUCT OVERVIEW

---

The DFHYTHU replacement filter is engineered to capture dust, allergens, and other airborne particles, maintaining clean air output and efficient suction for your SilverCrest SSR 3000 A1 vacuum cleaner. It features a durable construction designed for long-term use.



Image: Two DFHYTHU replacement filters, showing their pleated structure and overall design.

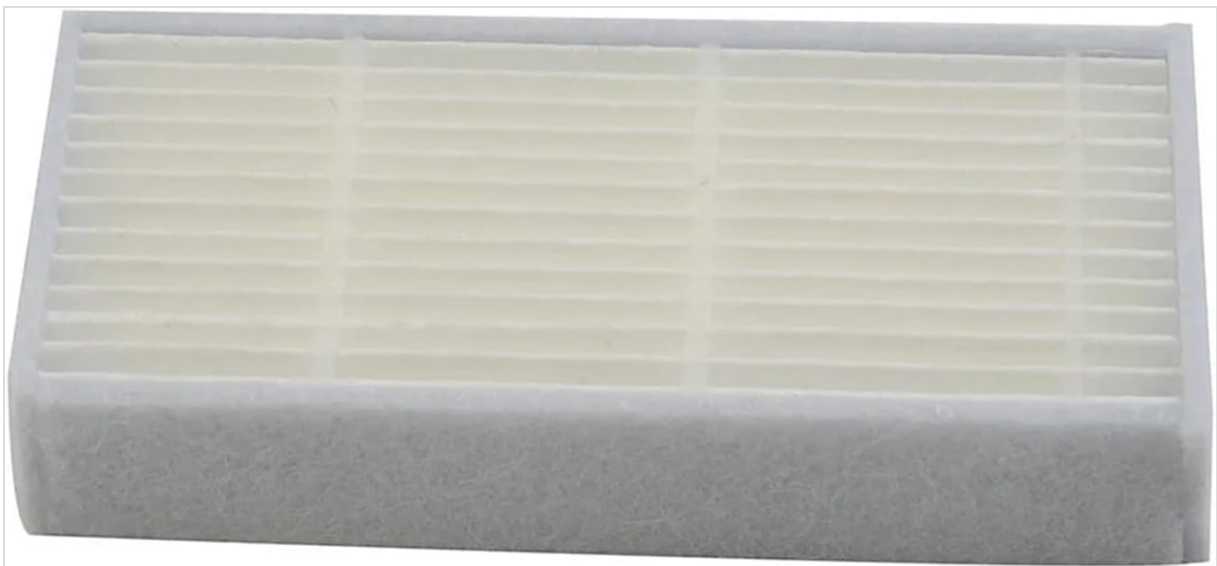


Image: Side view of a single DFHYTHU replacement filter, illustrating the pleated filtration material.

### Key Features:

- **Compatibility:** Specifically designed for SilverCrest SSR 3000 A1 vacuum cleaners.
- **Durability:** Constructed from robust materials for excellent longevity and consistent filtration.
- **Quality Control:** Each filter undergoes testing and inspection to ensure reliable performance.
- **Easy Installation:** Designed for straightforward replacement without specialized tools.

## 4. INSTALLATION INSTRUCTIONS

---

Follow these steps to install or replace the filter in your SilverCrest SSR 3000 A1 vacuum cleaner:

1. **Power Off:** Ensure the vacuum cleaner is turned off and unplugged from the electrical outlet.
2. **Locate Filter Compartment:** Refer to your SilverCrest SSR 3000 A1 vacuum cleaner's original manual to locate the filter compartment. This is typically found near the dustbin or motor housing.
3. **Remove Old Filter:** Carefully open the filter compartment and remove the old, dirty filter. Dispose of the old filter responsibly.
4. **Insert New Filter:** Place the new DFHYTHU replacement filter into the compartment. Ensure it is seated correctly and securely. The filter should fit snugly without excessive force.
5. **Close Compartment:** Close the filter compartment cover until it clicks into place, ensuring it is properly sealed.
6. **Restore Power:** Plug the vacuum cleaner back into the power outlet.

Your vacuum cleaner is now ready for use with the new filter.

## 5. OPERATING THE FILTER (INTEGRATED FUNCTION)

---

Once installed, the DFHYTHU replacement filter operates automatically as part of your SilverCrest SSR 3000 A1 vacuum cleaner's filtration system. It works by trapping fine dust particles and allergens from the air drawn into the vacuum, preventing them from being recirculated back into your environment. No specific user action is required for the filter to function during vacuum operation.

## 6. MAINTENANCE

---

Regular maintenance of your filter is crucial for maintaining optimal vacuum performance and air quality. The frequency of maintenance depends on usage and the amount of debris collected.

### Filter Cleaning:

It is recommended to periodically check the filter for visible dirt and debris. Gently tap the filter against a hard surface to dislodge accumulated dust. For heavily soiled filters, consult your vacuum cleaner's original manual for specific cleaning instructions for this type of filter. **Do not wash the filter with water unless explicitly permitted by the vacuum cleaner manufacturer.**

### Filter Replacement:

Filters have a finite lifespan. Even with regular cleaning, their filtration efficiency will decrease over time. Replace the filter every 3 to 6 months, or more frequently if you notice a decrease in suction power, increased motor noise, or if the filter appears heavily discolored or damaged. Regular replacement ensures your vacuum continues to operate efficiently and effectively.

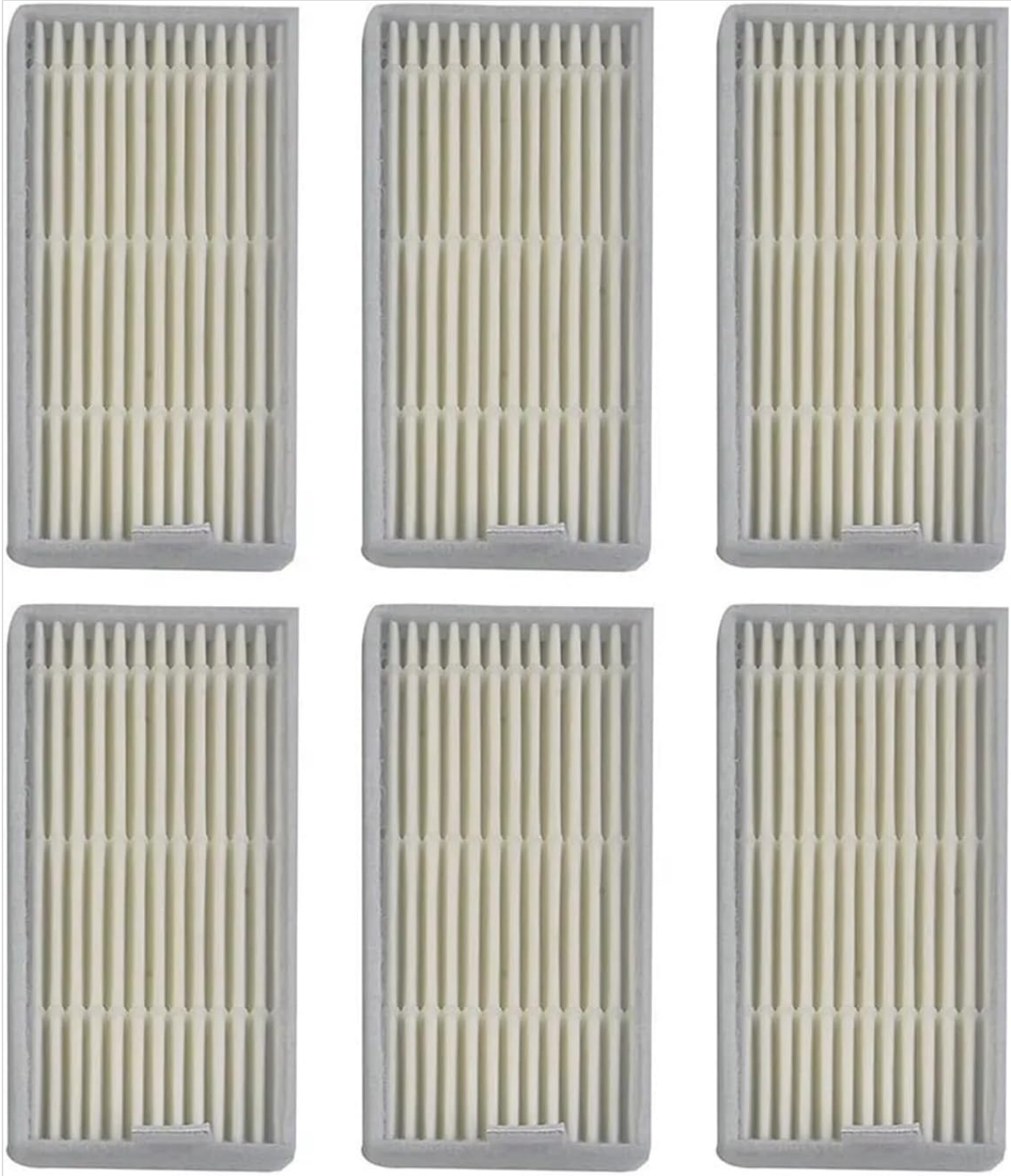


Image: Multiple DFHYTHU replacement filters, suggesting the availability of replacement packs.

## 7. TROUBLESHOOTING

---

If you encounter issues after installing your new filter, consider the following:

- **Reduced Suction Power:** Ensure the filter is installed correctly and the compartment cover is fully closed and sealed. Check if the filter itself is clogged; if so, clean or replace it.
- **Filter Does Not Fit:** Double-check that your vacuum cleaner model is indeed the SilverCrest SSR 3000 A1. Verify the filter orientation during installation.
- **Unusual Noises:** Ensure the filter is securely seated and not obstructing any moving parts within the vacuum cleaner.

If problems persist, refer to your vacuum cleaner's original manual or contact customer support.

## 8. SPECIFICATIONS

---

The following specifications apply to the DFHYTHU Replacement Filter for SilverCrest SSR 3000 A1:

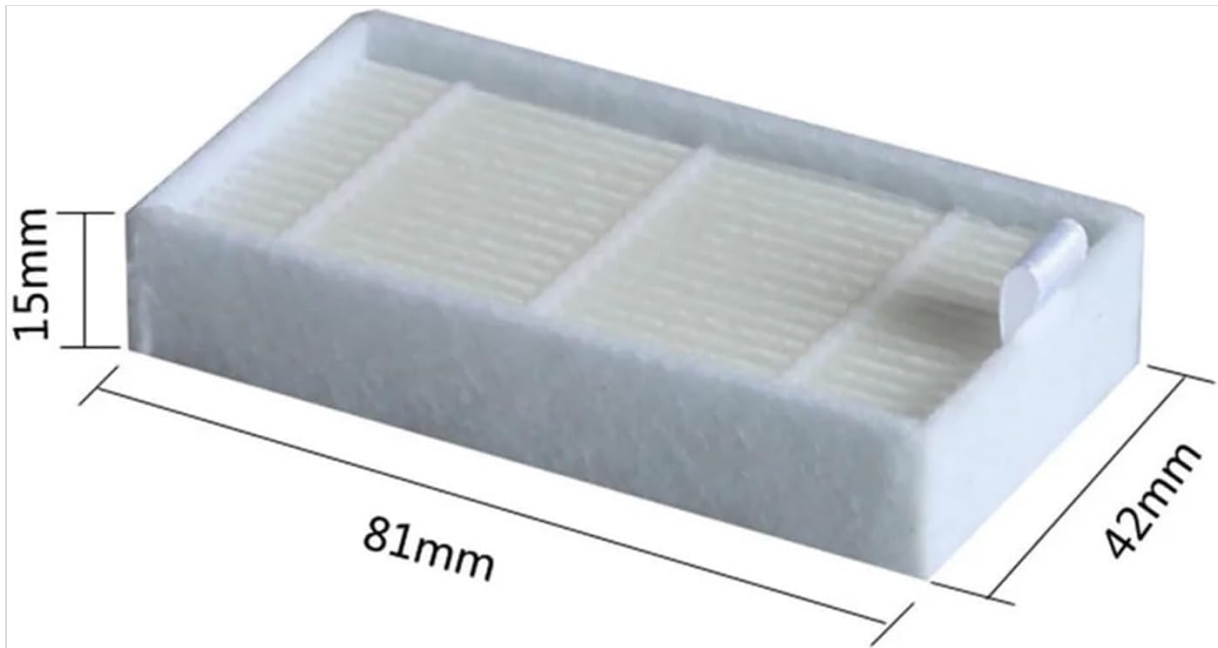


Image: DFHYTHU replacement filter with key dimensions indicated.

Attribute	Value
Brand	DFHYTHU
Compatible Model	SilverCrest SSR 3000 A1
Package Dimensions	1.18 x 0.79 x 0.39 inches (approximate filter dimensions: 81mm x 42mm x 15mm)
Item Weight	1.76 ounces
Number of Pieces	1 (per unit purchased)

## 9. SUPPORT

---

For any questions regarding the DFHYTHU replacement filter or assistance with installation and maintenance, please contact our customer support. We are committed to helping you resolve any issues you may encounter.