

[Manuals.plus](#) /

> [RABELITTO](#) /

> RABELITTO F15C-WIFI Automatic Pet Feeder User Manual

## RABELITTO F15C-WIFI

# RABELITTO F15C-WIFI Automatic Pet Feeder User Manual

Model: F15C-WIFI

## 1. INTRODUCTION

Thank you for choosing the RABELITTO F15C-WIFI Automatic Pet Feeder. This device is designed to provide convenient and reliable feeding for your small pets, including rabbits, guinea pigs, chinchillas, and more. Featuring a 1080P HD camera, Wi-Fi connectivity, and app control, it allows you to monitor your pet and manage feeding schedules remotely. Please read this manual thoroughly before use to ensure proper operation and maintenance.

## 2. SAFETY INFORMATION

- Ensure the feeder is placed on a stable surface or securely attached to the cage to prevent tipping.
- Use only the provided power adapter.
- Keep the feeder away from water and excessive moisture.
- Do not allow pets to chew on the power cord.
- This device is designed for dry pet food only. Do not use wet food, canned food, or treats that may clog the dispenser.
- Keep out of reach of children.
- Regularly clean the feeder to prevent bacterial growth and ensure food freshness.

## 3. PACKAGE CONTENTS

Verify that all items are present in the package:

- Automatic Rabbit Feeder (Main Unit) x 1
- Adapter With Cord x 1
- Pet Food Desiccant Bag x 1
- User Manual x 1

## 4. PRODUCT OVERVIEW

Familiarize yourself with the components of your RABELITTO F15C-WIFI Automatic Pet Feeder.



Image: Front view of the RABELITTO F15C-WIFI Automatic Pet Feeder, showing the food reservoir, control panel, and the integrated camera. A phone screen displays a live feed of a rabbit eating from the feeder.

- **Food Reservoir:** Transparent container for storing dry pet food (62oz capacity).
- **Control Panel:** Includes power button and indicator lights.
- **HD Camera:** 1080P camera with 110° wide-angle view and infrared night vision for monitoring.
- **Food Outlet:** Dispenses food into the bowl. Features dual outlets for different food sizes (5-20mm and 5-30mm).
- **Food Bowl:** Stainless steel bowl for pet consumption.
- **Hanging Plate:** Mechanism for attaching the feeder to a cage.
- **Battery Compartment:** For D-cell backup batteries (not included).
- **Power Port:** For connecting the AC adapter.

## 5. SETUP

## 5.1 Installation on Cage

The feeder is designed for universal cage fitting. Ensure your cage meets the following specifications:

- Vertical bar spacing: 21–44mm (0.8-1.7 inches)
- Rod diameters: ≤5mm
- Minimum height: 20mm

1. Install the food outlet onto the main feeder unit.
2. Attach the hanging plate to the feeder, ensuring it snaps securely.
3. Position the feeder on the outside of your pet's cage, aligning the hanging plate with the cage bars.
4. Secure the feeder to the cage using the integrated clips or screws provided (if any).
5. Install the physical food bowl onto the feeder's outlet. Ensure it locks into place.
6. Adjust the food bowl height as needed to protect your pet's neck.

# Ultra-Long Life

Accumulated over 30,000 tests

# 30000+



Suitable for  
**5-20mm** dry grains



Suitable for  
**5-30mm** dry grains



 Mixed hay food is excluded as it can block the passage.

Image: Visual guide illustrating the compatible cage bar spacing (21-44mm) and how the feeder attaches to a cage, along with overall

dimensions.



Image: Step-by-step visual instructions for installing the food outlet, hanging plate, physical bowls, and food outlet cover.

## 5.2 Power Supply

The feeder supports dual power supply for continuous operation.

- **Primary Power:** Connect the provided AC adapter to the feeder's power port and plug it into a wall outlet.
- **Backup Power:** For uninterrupted feeding during power outages, install D-cell batteries (not included) into the battery compartment. The feeder will automatically switch to battery power if the AC power is lost.

# Anti-power failure design

Dual power supply ensures feeding schedule in case of power failure



Battery Mode  
\*Batteries are not included

Power Mode

Image: Illustration of the feeder operating in Power Mode (connected to AC) and Battery Mode (with D-cell batteries installed), highlighting the anti-power failure design.

## 5.3 App Download and Wi-Fi Connection

Download the companion app to control your feeder and access camera features.

1. Scan the QR code in the user manual or search for the specified app name in your device's app store (e.g., Apple App Store or Google Play Store).
2. Install the app and create an account.
3. Follow the in-app instructions to connect your feeder to your home Wi-Fi network (supports 2.4G/5G network connection for stable signal).

## 5.4 Filling the Food Bin

The feeder has a 62oz capacity, suitable for up to 7+ days of feeding depending on your pet's consumption.

1. Open the lid of the food reservoir.
2. Pour dry pet food into the reservoir. Ensure the food type is compatible (see section 6.3).
3. Close the lid securely to maintain food freshness.

## 62oz Large capacity

up to 7+ days



### Recommended Food Types:



Strip Grain



Flat and Long Grain



Shaped Grain



Pellets



Mixed



Cat food

Image: The feeder with its 62oz food storage capacity, alongside examples of recommended food types such as strip grain, flat and long grain, shaped grain, pellets, mixed food, and cat food.

## 6. OPERATING INSTRUCTIONS

### 6.1 App-Controlled Feeding

Manage your pet's feeding schedule and portions using the companion app.

- **Scheduling Meals:** Set up to 10 meals per day. For each meal, you can specify the time and the number of servings (1–20 servings per meal). This helps establish a healthy feeding routine and prevents overeating.
- **Manual Feeding:** Dispense food on demand directly from the app for immediate feeding.

# Suitable for a wide range of pet cages

\*Vertical wire spacing 21-44mm, height spacing >20mm or more, pole  $\Phi \leq 5\text{mm}$

\*Product size is 9.45X 3.46X12.05inch, if your cage is smaller than the product size, please be careful to purchase.

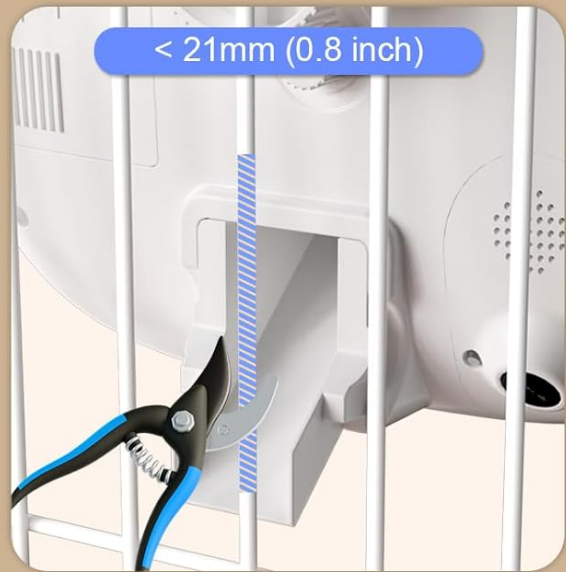


Image: A smartphone screen displaying the app's interface for scheduling meals, showing options for setting meal times and portion sizes, next to the feeder on a cage.

## 6.2 Camera Features

The integrated 1080P HD camera provides comprehensive monitoring capabilities.

- **Live View:** Access a real-time video feed of your pet 24/7 through the app.
- **Infrared Night Vision:** Monitor your pet even in complete darkness with automatic night vision.
- **Two-Way Audio:** Use the built-in microphone and speaker to listen to your pet and speak to them, providing comfort and companionship remotely.
- **Video Recording and Playback:** Record video clips and review past footage of your pet's feeding behavior.

# Hanging Cage Auto Pet Feeder Station

For Puppies, Kittens, Rabbits, Chinchillas, Hedgehogs, Guinea Pigs, and Ferrets



Image: An illustration demonstrating the two-way voice call feature, with a person speaking into a phone and a rabbit near the feeder, indicating communication.

# 1080P HD Pet Camera

## Check on Your Pet with Live Video



Image: A close-up of the feeder's camera lens and a phone screen showing the 1080P HD live video feed of a rabbit, highlighting the 110-degree wide-angle view.

### 6.3 Food Type Compatibility

The feeder is designed for dry pet food. It features dual outlet ports to accommodate different food sizes:

- **Small Outlet:** Suitable for pet food pellets 5-20mm in size.
- **Large Outlet:** Suitable for pet food pellets 5-30mm in size.

**Important: Mixed hay food is not recommended as it can clog the food passage and cause malfunctions.**

# Scheduled Feeding for Health

## Easy to program with a flexible feeding schedule



1-10 Meals



1-10 Portions

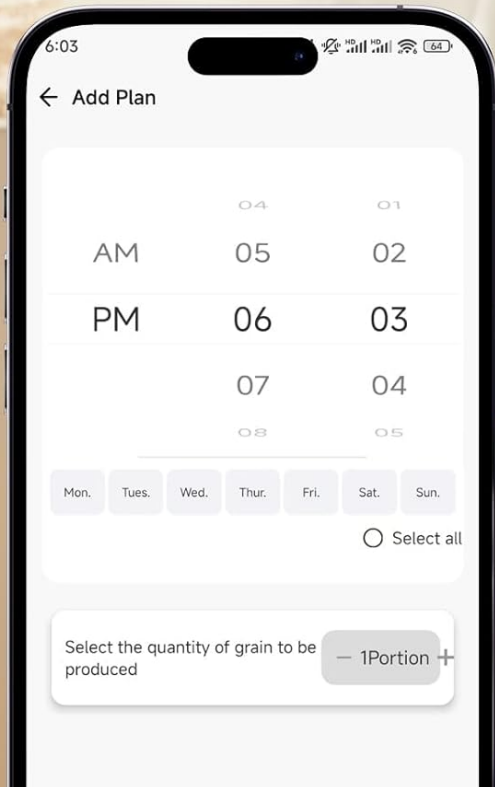


Image: An internal view of the feeder's anti-jam mechanism and illustrations of the two food outlet sizes (22mm for 5-20mm grains and 35mm for 5-30mm grains), emphasizing suitability for various dry food types.

## 7. MAINTENANCE

### 7.1 Cleaning Instructions

Regular cleaning is essential for hygiene and proper functioning.

- Disconnect the feeder from power before cleaning.
- Remove any remaining food from the reservoir and food bowl.
- The food reservoir and stainless steel bowl can be hand washed with mild soap and water.
- Wipe the main unit with a damp cloth. Do not submerge the main unit in water.
- Ensure all parts are completely dry before reassembling and refilling with food.

The stainless-steel bowl edge is chew-resistant, designed to protect against small animals' bites.

## Installation steps

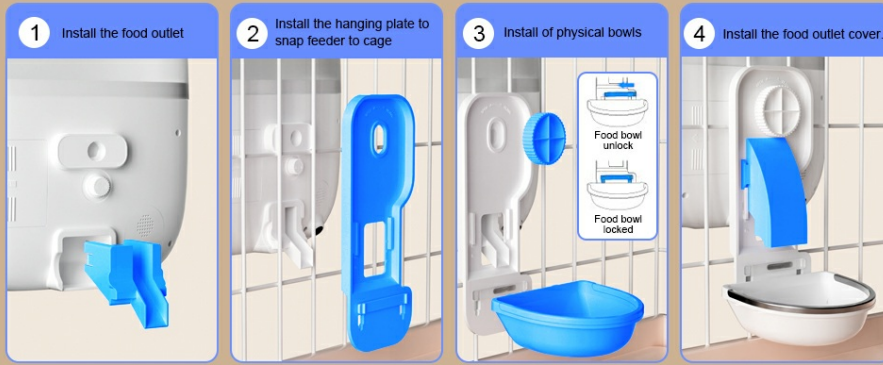


Image: A close-up of the feeder's food bowl, highlighting its stainless steel edge designed to prevent damage from pet chewing.

## 7.2 Desiccant Bag Replacement

The feeder includes a sealed desiccant box to keep food fresh and dry, preventing moisture. Replace the desiccant bag periodically (e.g., every 1-2 months) to maintain effectiveness.

## Suitable for a wide range of pet cages

\*Product size is 9.45X 3.46X12.05inch, if your cage is smaller than the product size, please be careful to purchase.

\*Cages not in the range can be simply modified for use by adding wire or cutting off part of the wire.

\*Vertical wire spacing 21-44mm, height spacing >20mm or more, pole  $\Phi \leq 5\text{mm}$

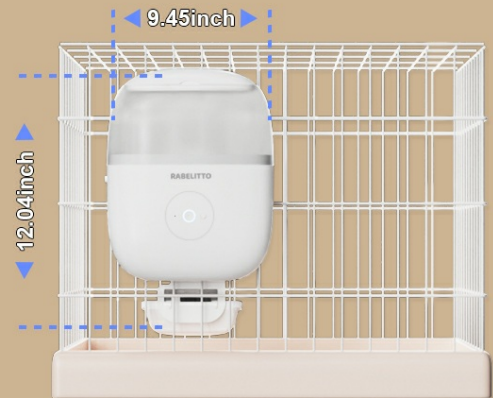
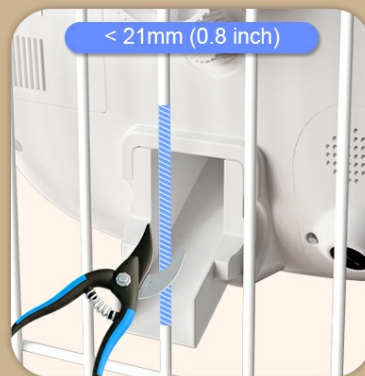


Image: An exploded view of the feeder's lid, showing the location of the pet food desiccant bag, designed to keep food fresh and dry.

## 8. TROUBLESHOOTING

Problem	Possible Cause	Solution
Feeder not dispensing food.	Food bin empty; food jammed; power issue.	Refill food bin. Check for obstructions in the food passage and clear them. Ensure power adapter is connected or batteries are installed correctly.
App cannot connect to feeder.	Incorrect Wi-Fi password; feeder too far from router; Wi-Fi signal interference.	Verify Wi-Fi password. Move feeder closer to the router. Restart feeder and router. Ensure your Wi-Fi is 2.4G/5G compatible.

Problem	Possible Cause	Solution
Camera feed is blurry or dark.	Lens dirty; insufficient lighting; night vision not active.	Clean the camera lens gently. Ensure adequate lighting or check if infrared night vision is enabled in the app.
Two-way audio not working.	Microphone/speaker blocked; app permissions.	Ensure nothing is blocking the microphone or speaker. Check app permissions on your phone to allow microphone access.
Feeder makes unusual noises.	Food jam; internal mechanism issue.	Check for food jams and clear them. If the issue persists, contact customer support.

## 9. SPECIFICATIONS

<b>Model Name</b>	F15C-WIFI
<b>Brand</b>	RABELITTO
<b>Item Weight</b>	2.42 pounds
<b>Product Dimensions</b>	10.79 x 4.89 x 12.04 inches
<b>Material</b>	Acrylonitrile Butadiene Styrene
<b>Color</b>	White
<b>Food Storage Capacity</b>	62oz
<b>Camera Resolution</b>	1080P HD
<b>Camera Angle</b>	110° Wide Angle
<b>Connectivity</b>	Wi-Fi (2.4G/5G compatible)
<b>Power Supply</b>	AC Adapter, D-cell Batteries (backup)
<b>Compatible Pet Food Size</b>	5-20mm (small outlet), 5-30mm (large outlet)
<b>Target Species</b>	Small animals, Rabbits, Cats, Puppies, Guinea Pigs, Chinchillas, Ferrets, Hedgehogs, Birds, etc.

## 10. WARRANTY AND SUPPORT

**Warranty:** This RABELITTO product comes with a 1-year warranty from the date of purchase, covering manufacturing defects. Please retain your proof of purchase for warranty claims.

**Customer Support:** For technical assistance, troubleshooting, or warranty inquiries, please contact RABELITTO customer service through the contact information provided on our official website or through your purchase platform. Our team is available to assist you with any questions or concerns.

For more information and updates, visit the official RABELITTO website: [RABELITTO Official Store on Amazon](#)



© 2024 RABELITTO. All rights reserved.