

[Manuals.plus](#) /

> [BMT xms](#) /

> BMT xms LED Interior Light Kit Instruction Manual for KIA Sorento UM (2016-2020)

BMT xms YC-KIA-Sorento-1520-11-W

BMT xms LED Interior Light Kit Instruction Manual for KIA Sorento UM (2016-2020)

Model: YC-KIA-Sorento-1520-11-W

1. INTRODUCTION

This manual provides detailed instructions for the installation and maintenance of your BMT xms LED Interior Light Kit, designed specifically for KIA Sorento UM models manufactured between 2016 and 2020. This kit replaces your vehicle's original interior halogen bulbs with brighter, more efficient LED lights, enhancing visibility and modernizing your vehicle's interior.

Please read these instructions carefully before beginning installation to ensure proper function and to avoid damage to your vehicle or the product.

2. PACKAGE CONTENTS

Your BMT xms LED Interior Light Kit includes the following components:

- LED bulbs for various interior locations (specific quantities and types are labeled)
- 1 x Pry Tool for safe removal of light covers

The kit is designed to replace the following lights:

- Front Map Lights (Note: Sunroof models may not require these specific bulbs)
- Rear Dome Light (Note: Sunroof models may not require these specific bulbs)
- Vanity Mirror Lights
- Glove Box Light
- Trunk Light
- License Plate Lights

WHTA'S IN THE BOX?

1*INDOOR LIGHT UPGRADE KIT

1*INSTALLATION TOOL



All our bulbs are individually labelled for easy installation

Image: Contents of the BMT xms LED Interior Light Kit, showing individually labeled bulb packages and a pry tool for installation.

3. INSTALLATION INSTRUCTIONS

The BMT xms LED Interior Light Kit is designed for plug-and-play installation. Each bulb package is labeled for its specific location in the vehicle. Follow these general steps for replacement:

1. Step 1: Prepare for Installation

Ensure your vehicle's ignition is off and the lights are cool to the touch. Locate the light fixture you wish to upgrade.

2. Step 2: Remove the Lamp Cover

Using the provided pry tool, carefully unclip and remove the plastic lamp cover. Apply gentle pressure to avoid scratching or damaging the surrounding trim.



Image: Using the provided pry tool to carefully remove the lamp cover from the vehicle's interior light fixture.

3. Step 3: Remove the Original Halogen Bulb

Gently pull out the existing halogen bulb from its socket. Be cautious as the bulb may be hot if recently used.



Image: Carefully removing the original halogen bulb from its socket after the cover has been detached.

4. Step 4: Install the New LED Bulb

Insert the corresponding LED bulb into the socket. Ensure the bulb is oriented correctly. If the LED does not light up, remove it, rotate it 180 degrees, and reinsert it. LEDs are polarity sensitive.

HIGH QUALITY LED LIGHTS

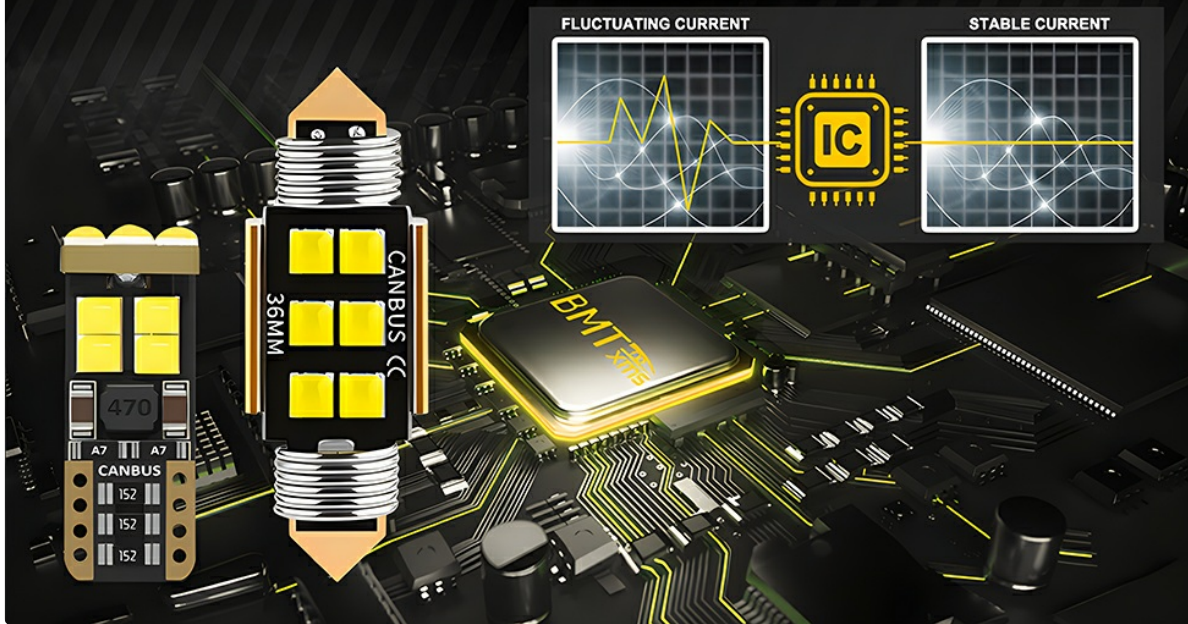


Image: Inserting the new LED bulb into the empty socket. Note the correct orientation for proper function.

5. Step 5: Test the Installation

Before replacing the cover, turn on your vehicle's interior lights to confirm the new LED bulb is functioning correctly.

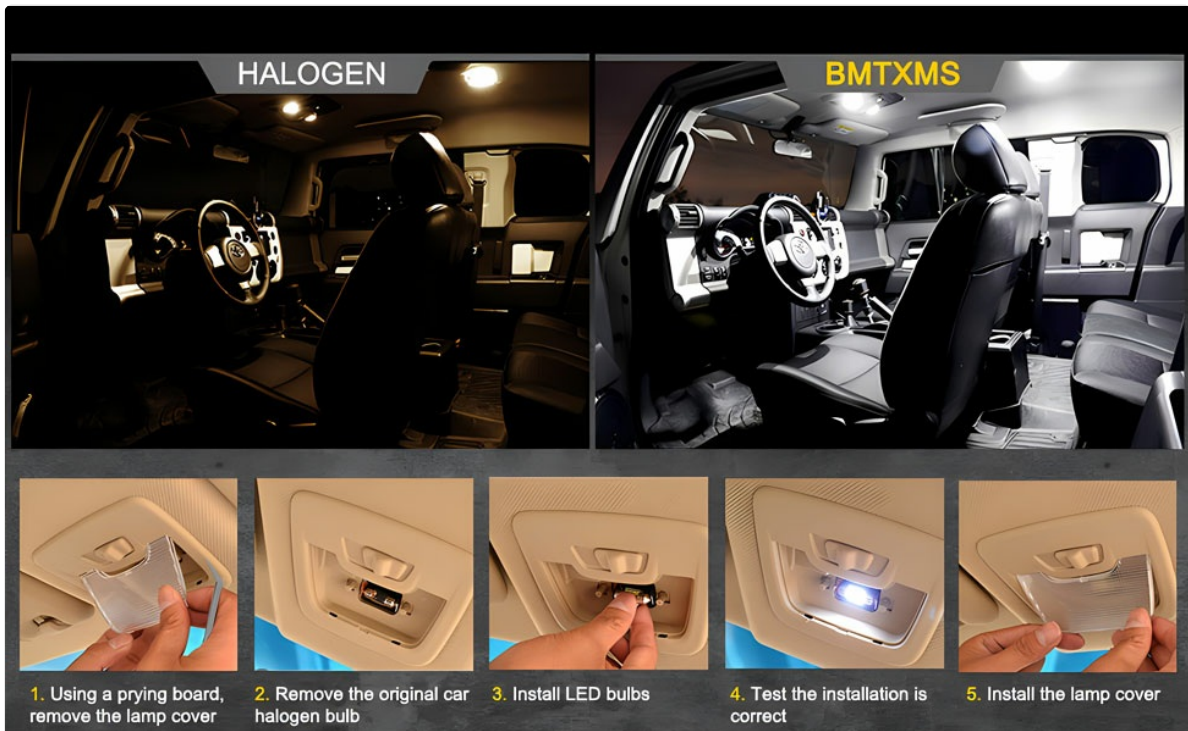


Image: Testing the newly installed LED bulb to confirm it is working before reattaching the lamp cover.

6. Step 6: Reinstall the Lamp Cover

Once confirmed, carefully snap the lamp cover back into place.

Repeat these steps for all desired interior light replacements. Remember that sunroof models may have different light configurations for front map and rear dome lights.

4. OPERATING THE LED LIGHTS

The BMT xms LED interior lights operate in the same manner as your vehicle's original lights. Use your vehicle's standard interior light switches to turn them on or off. The LEDs provide a super bright 6000K white light, significantly improving interior visibility.



See Clearly in the Vehicle at Night



Image: A vehicle's interior clearly illuminated by the new LED lights at night, demonstrating enhanced visibility.

5. MAINTENANCE

BMT xms LED bulbs are designed for long-lasting performance and typically require minimal maintenance. To ensure optimal performance:

- Keep light covers clean and free of dust or debris.
- Avoid using harsh chemicals directly on the LED bulbs or their housing.
- If a bulb stops working, recheck its polarity by rotating it 180 degrees before considering replacement.

6. TROUBLESHOOTING

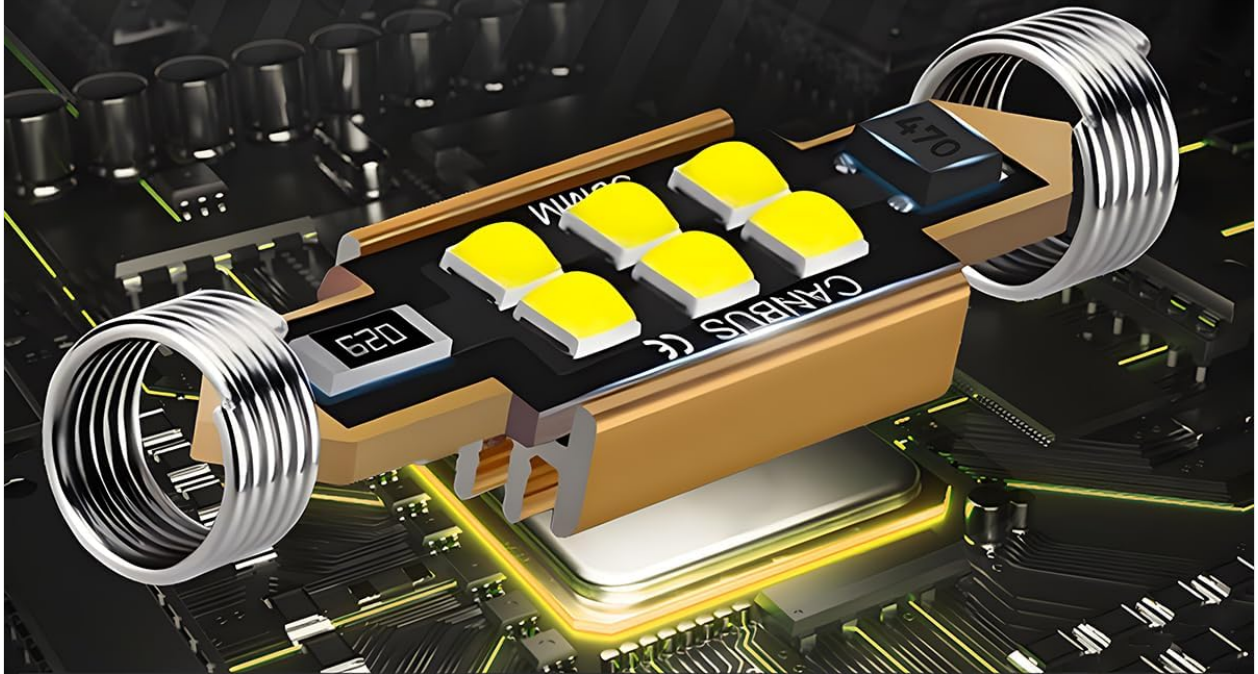
Problem	Possible Cause	Solution
----------------	-----------------------	-----------------

Problem	Possible Cause	Solution
LED bulb does not light up.	Incorrect polarity (LEDs are polarity sensitive).	Remove the LED bulb, rotate it 180 degrees, and reinsert it into the socket.
LED bulb flickers or turns off intermittently.	Loose connection or incompatible vehicle electrical system (less common with CANBUS design).	Ensure the bulb is securely seated in the socket. If issues persist, contact customer support.
Some lights in the kit are not used.	Vehicle model variations (e.g., sunroof models).	This is normal. The kit provides bulbs for common configurations. Unused bulbs can be kept as spares.

7. SPECIFICATIONS

- **Product Type:** LED Interior Light Kit
- **Compatibility:** KIA Sorento UM (2016, 2017, 2018, 2019, 2020)
- **Color Temperature:** 6000K White
- **Brightness:** Approximately 350% brighter than original halogen bulbs
- **LED Type:** 3030 LED
- **Voltage:** 12 Volts
- **CANBUS:** Error-free CANBUS design
- **Model Number:** YC-KIA-Sorento-1520-11-W
- **Manufacturer:** BMT xms

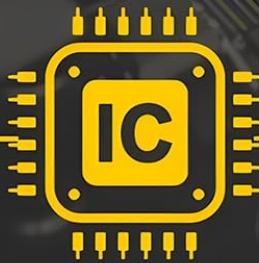
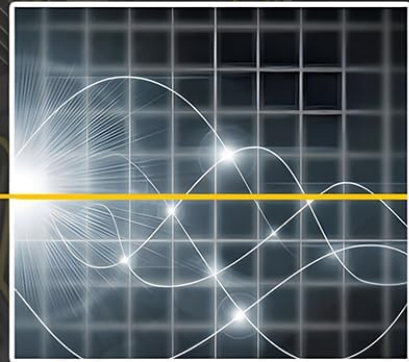
100% ERROR FREE CANBUS DESIGN



FLUCTUATING CURRENT



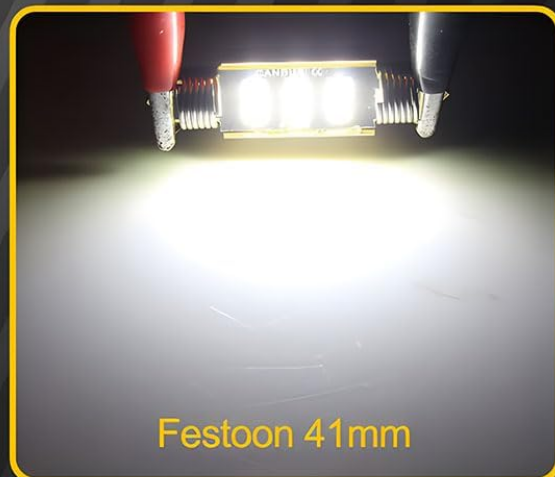
STABLE CURRENT



Built-in constant current smart IC, effectively protect the bulb and prolong its service life

Image: Diagram explaining the error-free CANBUS design, which ensures stable current and prevents error messages in compatible vehicles.

300%+ BRIGHTER THAN HALOGEN LAMP



Provide bright 6000K white light, the overall brightness will be increased by 350%+

Image: Visual comparison demonstrating the significantly increased brightness (300%+) of the LED bulbs compared to standard halogen lamps.

8. WARRANTY AND SUPPORT

For any questions, concerns, or assistance with your BMT xms LED Interior Light Kit, please contact our customer support. We are committed to providing high-quality products and support.

Please refer to your purchase documentation for specific warranty details and contact information.

