

Monster E35-WH

Monster Open Ear AC312 Headphones User Manual

Model: E35-WH

INTRODUCTION

This manual provides detailed instructions for the Monster Open Ear AC312 Headphones, model E35-WH. Please read this manual thoroughly before using the product to ensure proper operation and to maximize its lifespan. These open-ear wireless earbuds are designed for comfort and situational awareness, featuring Bluetooth 5.4 connectivity, ENC noise-cancelling microphone, and extended battery life.

PACKAGE CONTENTS

Verify that all items are present in the package:

- Monster Open Ear AC312 Headphones (Left and Right Earbuds)
- Wireless Charging Case
- USB-C Charging Cable
- User Manual (this document)



Image: Monster Open Ear AC312 Headphones and their charging case, both in white, illustrating the complete product package.

PRODUCT OVERVIEW

The Monster Open Ear AC312 Headphones are designed for comfort and awareness. Key features include an ergonomic ear hook, ultra-light design, and soft silicone material for extended wear.

Open Ear Comfort

Air conduction
earbuds -Wear all day
without getting tired

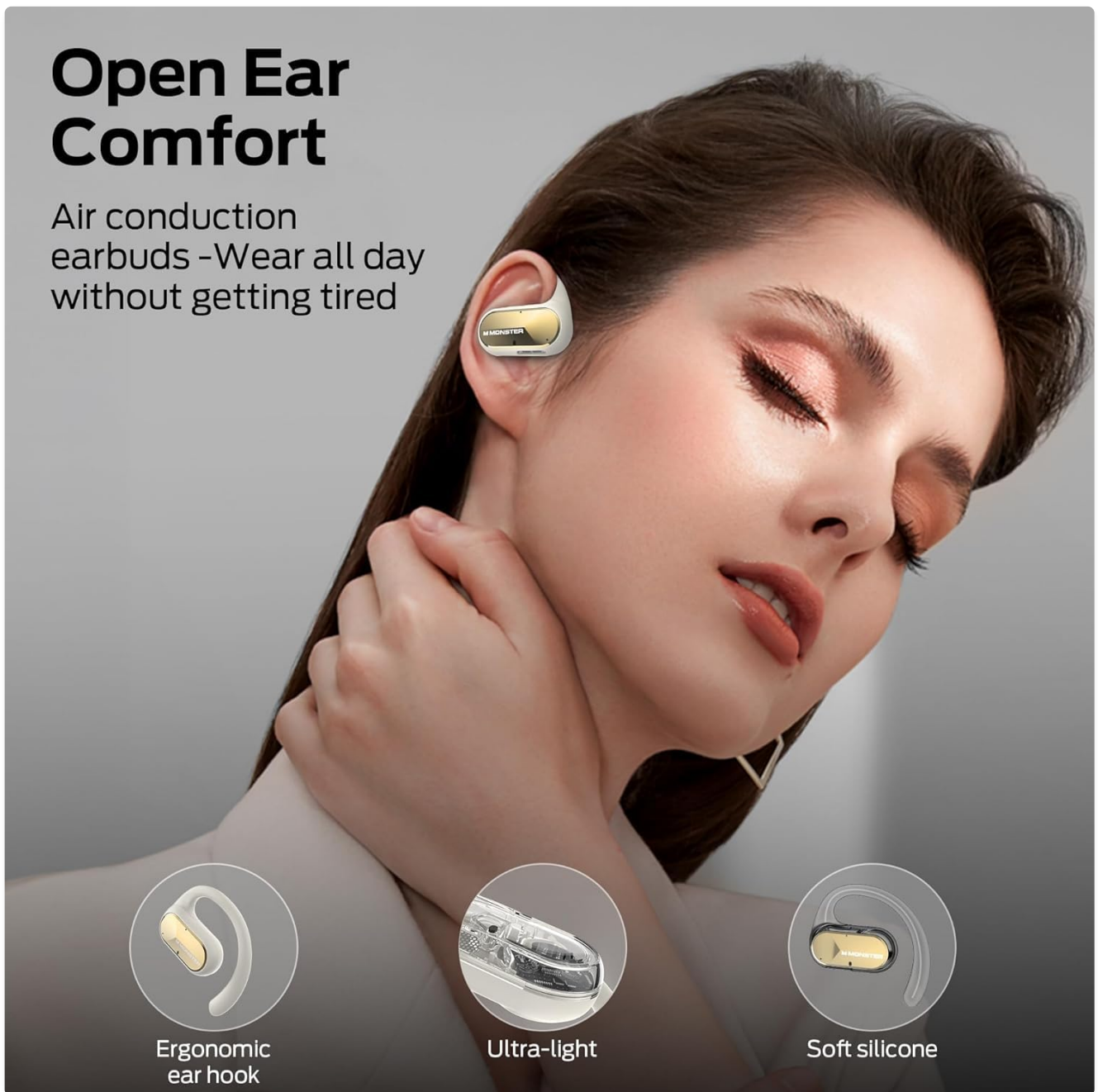


Image: A woman wearing the Monster Open Ear AC312 Headphones, demonstrating the open-ear design and comfortable fit. Insets show the ergonomic ear hook, ultra-light construction, and soft silicone material.

Components:

- **Earbud Body:** Houses the speaker and internal components.
- **Ear Hook:** Secures the earbud over the ear.
- **Touch Control Area:** Located on the outer surface of each earbud for various functions.
- **Microphone:** Integrated for calls and voice commands, featuring ENC noise cancellation.
- **Charging Contacts:** On the earbuds and inside the charging case.
- **Charging Case:** Stores and recharges the earbuds, with LED indicators for battery status.

SETUP

1. Charging the Headphones and Case

Before first use, fully charge the headphones and the charging case.

1. Place both earbuds into the charging case. Ensure they are correctly seated and the charging contacts align.
2. Connect the USB-C charging cable to the charging port on the case and the other end to a USB power adapter (not included) or a computer's USB port.
3. The LED indicators on the charging case will illuminate to show charging status. Once fully charged, the indicators will remain solid or turn off, depending on the model.
4. A full charge provides up to 8 hours of playtime per charge, with the charging case extending total playtime up to 32 hours. A 5-minute quick charge can provide 1 hour of listening time.

Extra Long Playback up to 32 Hours

400 mAh

32 Hours



Image: The Monster Open Ear AC312 Headphones and their charging case, illustrating the extended playback time of up to 32 hours with the case's 400mAh battery capacity.

2. Pairing with a Bluetooth Device

The headphones use Bluetooth 5.4 for a faster and more stable connection.

1. Open the charging case. The earbuds will automatically enter pairing mode, indicated by a flashing LED light on the earbuds.
2. On your device (smartphone, tablet, computer), enable Bluetooth.
3. Search for new Bluetooth devices. Select "Monster AC312" from the list of available devices.

4. Once connected, the LED indicator on the earbuds will stop flashing. You will hear an audible confirmation.
5. The headphones will automatically reconnect to the last paired device when taken out of the case, if Bluetooth is enabled on the device.

Upgraded Bluetooth 5.4



Faster than the last generation



Longer transmission distance



More stable connection

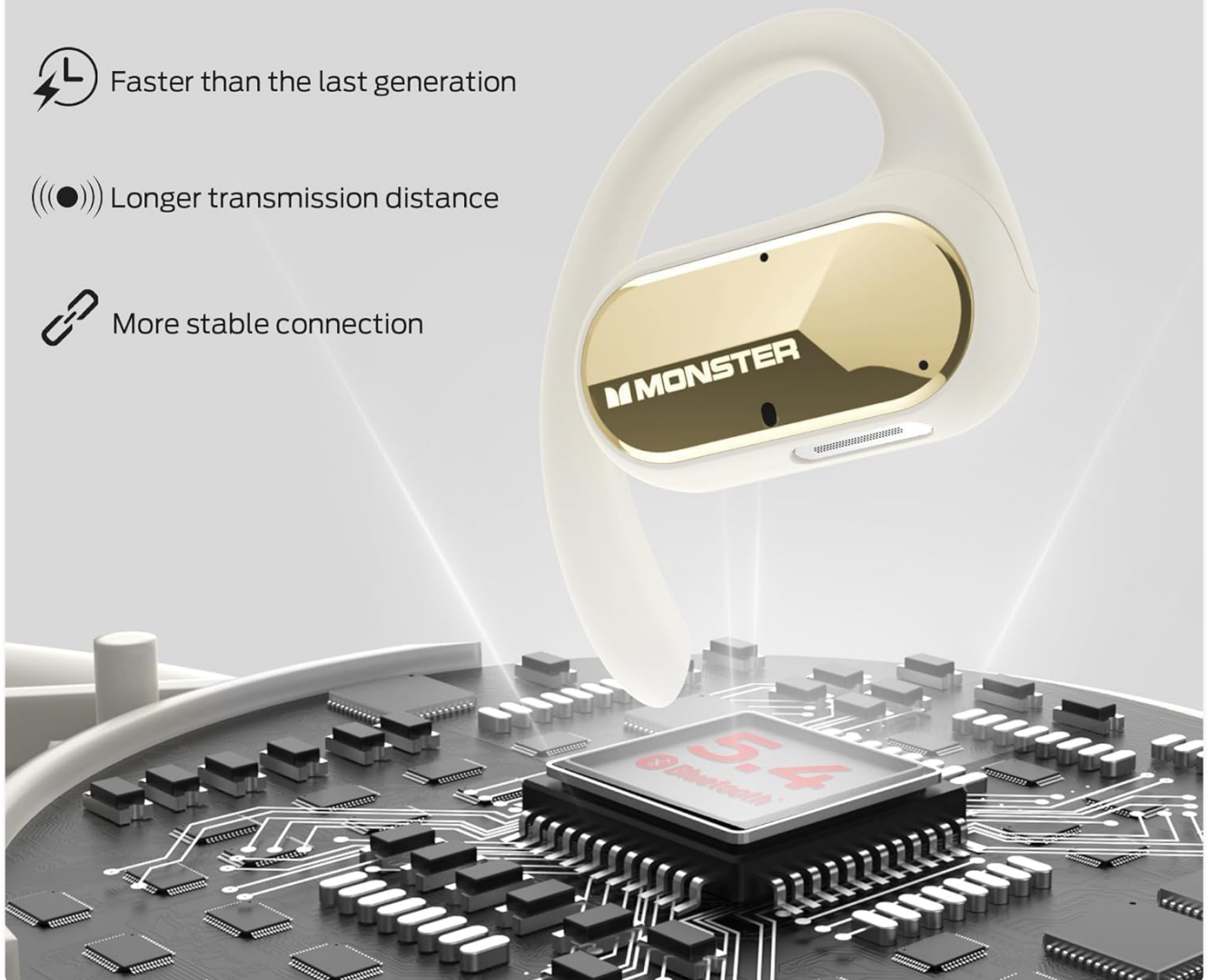


Image: A detailed view of a Monster Open Ear AC312 earbud, overlaid with a diagram illustrating the upgraded Bluetooth 5.4 chip, emphasizing faster and more stable connectivity.

OPERATING INSTRUCTIONS

The Monster Open Ear AC312 Headphones feature intuitive touch controls.

Music Playback:

- **Play/Pause:** Single tap on either earbud.
- **Next Track:** Double tap on the right earbud.
- **Previous Track:** Double tap on the left earbud.
- **Volume Up:** Triple tap on the right earbud.
- **Volume Down:** Triple tap on the left earbud.

Call Management:

The ENC noise-cancelling microphone ensures clear calls by filtering environmental noise.

- **Answer/End Call:** Single tap on either earbud.
- **Reject Call:** Press and hold either earbud for 2 seconds.

Enjoy Crystal Clear Call

ENC noise canceling accurately picks up your voice for flawless hands-free calls



Image: A man smiling while wearing the Monster Open Ear AC312 Headphones, illustrating the clear call quality provided by the ENC noise-cancelling technology.

Voice Assistant:

- **Activate Voice Assistant:** Press and hold either earbud for 3 seconds.

Situational Awareness:

The open-ear design allows you to enjoy audio while remaining aware of your surroundings, enhancing safety during activities like cycling or running.

Aware of Danger

Enjoy music while
staying aware of
surroundings



Image: A cyclist wearing Monster Open Ear AC312 Headphones, demonstrating how the open-ear design allows for awareness of environmental sounds, such as an approaching car, for safety.

MAINTENANCE

Proper maintenance ensures the longevity and optimal performance of your Monster Open Ear AC312 Headphones.

- **Cleaning:** Use a soft, dry, lint-free cloth to clean the earbuds and charging case. Do not use abrasive cleaners, alcohol, or chemical solvents.
- **Water Resistance:** The headphones are IPX5 water resistant, meaning they can withstand splashes and sweat. Do not submerge them in water or expose them to strong jets of water. Dry them thoroughly after exposure to moisture.
- **Storage:** When not in use, store the earbuds in their charging case to protect them and keep them charged. Store in a cool, dry place away from extreme temperatures.
- **Charging Contacts:** Periodically check and gently clean the charging contacts on both the earbuds and the case to ensure a good connection.

IPX5 Water Resistance

Widely suitable for sports, exercise, running, cycling, hiking, driving, working, etc.

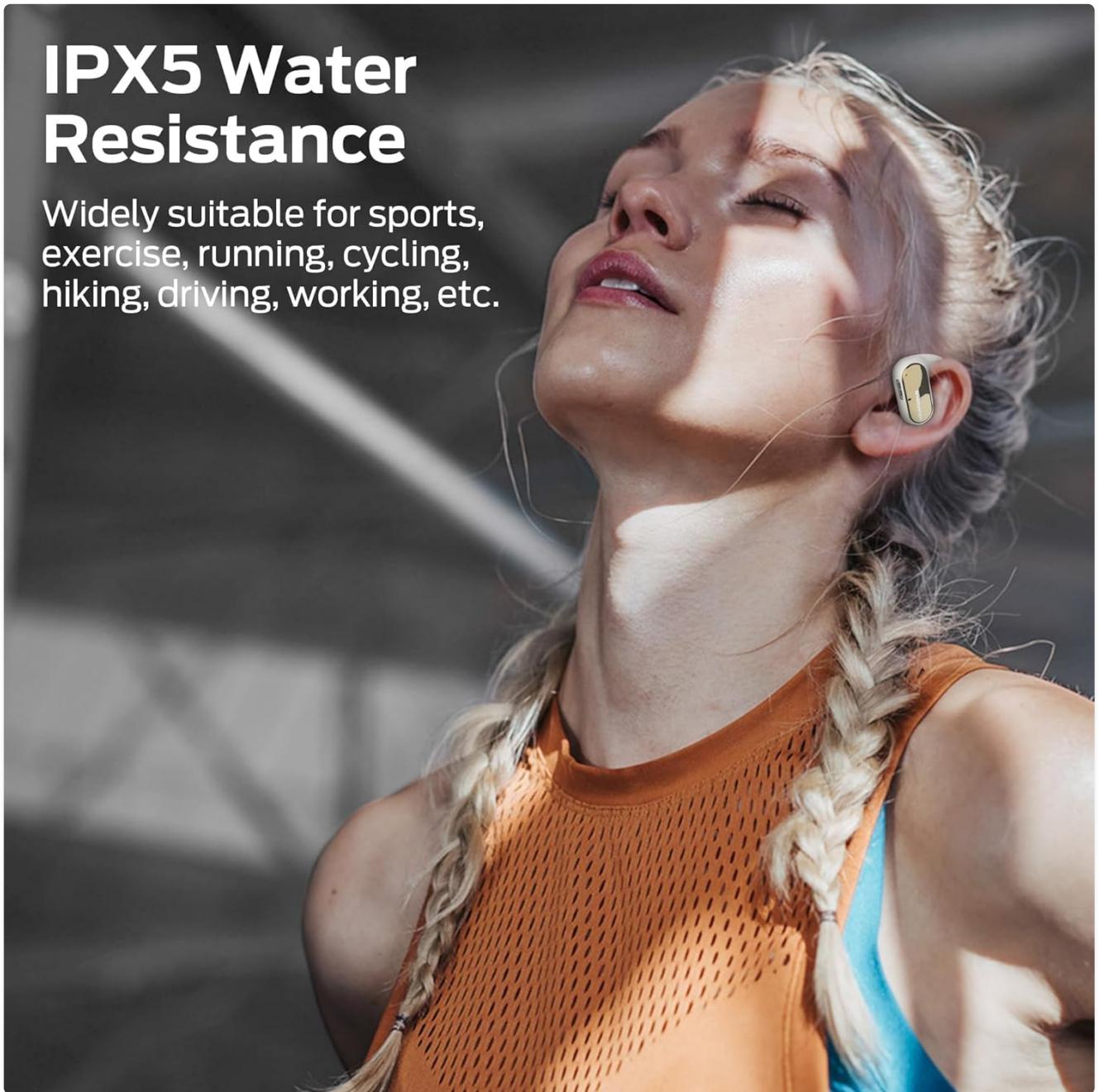


Image: A woman with wet hair wearing the Monster Open Ear AC312 Headphones, illustrating their IPX5 water resistance, making them suitable for sports and exercise.

TROUBLESHOOTING

If you encounter issues with your Monster Open Ear AC312 Headphones, refer to the solutions below:

Problem	Possible Solution
Headphones do not turn on.	Ensure the earbuds are charged. Place them in the charging case and connect the case to power.
Cannot pair with device.	Ensure Bluetooth is enabled on your device. Make sure the earbuds are in pairing mode (flashing LED). Forget "Monster AC312" from your device's Bluetooth list and try pairing again. Ensure the earbuds are within the Bluetooth range (10 meters).

Problem	Possible Solution
No sound or low volume.	Adjust the volume on both your device and the headphones. Ensure the headphones are properly connected to your device. Check if the audio output is set to "Monster AC312" on your device.
Intermittent connection.	Move closer to your device. Avoid obstacles between the headphones and your device. Ensure there is no interference from other wireless devices. Reset the headphones (refer to manufacturer's specific reset instructions if available, otherwise, place in case and re-pair).
One earbud not working.	Place both earbuds back into the charging case, close the lid, wait a few seconds, then take them out again. Ensure both earbuds are charged. Clean the charging contacts on both the earbud and the case.

SPECIFICATIONS

Feature	Detail
Model	E35-WH (AC312)
Connectivity	Bluetooth 5.4
Ear Placement	Open Ear
Driver Size	16mm Large Drivers
Noise Control	Environmental Noise Cancellation (ENC) for Mic
Water Resistance	IPX5 (Waterproof)
Battery Life (Earbuds)	Up to 8 hours per charge
Total Playtime (with Case)	Up to 32 hours
Charging Port	USB-C
Control Type	Touch Control
Frequency Range	20Hz - 20,000Hz
Material	Plastic
Dimensions (Parcel)	13.3 x 11.4 x 4.7 cm
Weight (Parcel)	190 g

WARRANTY AND SUPPORT

Monster products are designed and manufactured to the highest quality standards. For warranty information and customer support, please refer to the official Monster website or contact their customer service directly. Keep your

purchase receipt as proof of purchase for warranty claims.

Online Support: Visit the official Monster website for FAQs, product registration, and support resources.

www.monsterproducts.com/support






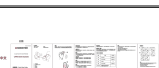
Contact Information: Refer to the Monster website for regional contact details for customer service.

Return Policy: The buybox winner indicates a 30-day return policy for refund/replacement. Please check with your retailer for specific return procedures.

© 2025 Monster. All rights reserved.

Monster and the Monster logo are trademarks or registered trademarks of Monster, Inc.

Related Documents - E35-WH

	<p>Monster Open Ear AC225 Bluetooth Headphones Quick Start Guide</p> <p>A concise guide to setting up and using your Monster Open Ear AC225 Bluetooth Headphones, covering charging, pairing, wearing, and basic operations.</p>
	<p>Ankbit E35 Open Ear Headphones User Manual - Bluetooth 5.3 Wireless Earbuds</p> <p>Comprehensive user guide for Ankbit E35 Open Ear Headphones. Features Bluetooth 5.3, 16.5mm dynamic drivers, 60-hour playtime, air conduction, and waterproof design for sports and daily use.</p>
	<p>Monster Aria Free Quick Start Guide - Wireless Open Ear Headphones</p> <p>Get started quickly with the Monster Aria Free open-ear wireless headphones. This guide covers charging, pairing, controls, and wearing instructions for model MH22134.</p>
	<p>Monster MH22241 Bluetooth Headphones Quick Start Guide</p> <p>Quick start guide for Monster MH22241 Bluetooth Headphones, covering setup, pairing, operation, and indicator lights. Learn how to use your Monster Open Ear AC390 earbuds.</p>
	<p>Monster Open Ear AC210 Bluetooth Headphones Quick Start Guide</p> <p>User guide for Monster Open Ear AC210 Bluetooth headphones, covering setup, pairing, controls, and troubleshooting. Features include touch controls, voice assistant, and single-earphone mode.</p>
	<p>Monster Open Ear AC600 Bluetooth Headphones Quick Start Guide</p> <p>A concise guide to setting up and using your Monster Open Ear AC600 Bluetooth headphones, including pairing, controls, and charging.</p>