



[Manuals.plus](#) /

> [MFLASMF](#) /

> MFLASMF Concealed Black Shower System with Rain Shower Head, Handheld Sprayer, and Body Spray Massage (Type A, 12 Inches)
- Instruction Manual

MFLASMF Type A 12 Inches

MFLASMF Concealed Black Shower System (Type A, 12 Inches)

Instruction Manual

1. INTRODUCTION

Thank you for choosing the MFLASMF Concealed Black Shower System. This manual provides essential information for the safe installation, operation, and maintenance of your new shower system. Please read these instructions thoroughly before installation and retain them for future reference.



Image 1: Overview of the MFLASMF Concealed Black Shower System components, including the rain shower head, control valve, handheld sprayer, and body spray jets.

2. SAFETY INFORMATION

- Installation should be performed by a qualified professional or experienced individual.
- Ensure all local plumbing and building codes are followed.
- Turn off the main water supply before beginning any installation or maintenance.

- Wear appropriate personal protective equipment, such as safety glasses and gloves.
- Inspect all components for damage before installation. Do not install damaged parts.
- Rinse the pre-embedded water pipes thoroughly before installation to prevent clogging.

3. PACKAGE CONTENTS

Verify that all components are present and undamaged before proceeding with installation:

- Rain Shower Head (12 Inches, Brass)
- Shower Arm
- Concealed Control Valve with Embedded Box (Brass body, Ceramic valve core)
- Single Handle Lever
- Handheld Sprayer (Brass)
- Shower Hose (1.5M, Stainless Steel)
- Handheld Shower Holder (Brass)
- Body Spray Massage Jets (3 units, Brass)
- Mounting Hardware



Image 2: Detailed view of the handheld shower, hose, and holder components, demonstrating its use.

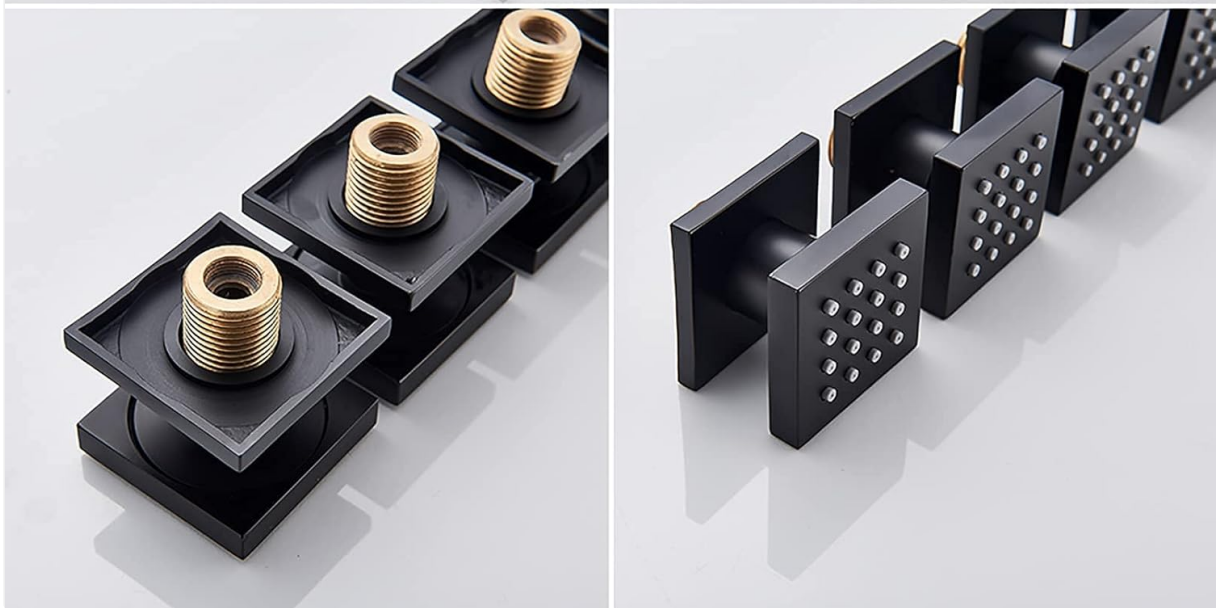


Image 3: Exploded view of the body spray jet components, showing the internal structure and mounting.

4. SPECIFICATIONS

Style	Contemporary
Installation Type	Wall Mounted, Concealed
Cold/Hot Water Control	Single Holder Dual Control
Color	Black
Body Material	Brass
Valve Core Material	Ceramic
Rain Shower Head Material	Brass
Handheld Shower Material	Brass

Body Spray Massage Material	Brass
Connection	G1/2"
Hose Material/Size	Stainless Steel/1.5M (59 inches)



Image 4: Technical drawing illustrating the dimensions of the rain shower head, shower arm, control panel, handheld shower, and body spray jets.

5. SETUP AND INSTALLATION

This concealed shower system requires careful planning and installation within the wall. It is highly recommended to consult a professional plumber for installation.

5.1 Pre-Installation Steps

1. **Turn off Water Supply:** Locate and turn off the main water supply to your home.
2. **Clear Debris:** Before connecting the faucet and internal piping, flush the pre-embedded water pipes to remove any debris that could cause clogging.

3. **Inspect Components:** Unpack all parts and inspect them for any manufacturing defects or shipping damage.

5.2 Installation of Concealed Valve and Piping

1. **Prepare Wall Cavity:** Create an appropriate opening in the wall for the embedded box of the control valve, ensuring sufficient depth for the valve body and connections.
2. **Mount Embedded Box:** Securely mount the embedded box within the wall cavity according to the manufacturer's guidelines, ensuring it is level and at the correct depth relative to the finished wall surface.
3. **Connect Water Lines:** Connect the hot and cold water supply lines to the designated inlets on the control valve (G1/2" connections). Ensure all connections are watertight.
4. **Connect Outlets:** Connect the outlet pipes from the control valve to the rain shower head, handheld shower, and body spray jets. Plan the routing of these pipes carefully within the wall.
5. **Install Shower Arm:** Securely install the shower arm into the wall and connect it to the rain shower head outlet.
6. **Install Body Spray Jets:** Install the three body spray massage jets at desired heights and positions, connecting them to their respective outlets.
7. **Install Handheld Shower Holder:** Mount the handheld shower holder at a convenient height.



Image 5: Detailed view of the concealed control valve and its embedded box, showing the internal ceramic valve core and external trim components.

5.3 Finishing Steps

1. **Install Trim Plate and Handle:** Once the wall is finished (tiled, etc.), install the decorative trim plate and the single handle lever onto the control valve.
2. **Attach Rain Shower Head:** Securely attach the rain shower head to the shower arm.
3. **Connect Handheld Sprayer:** Connect the 1.5M stainless steel hose to the handheld shower outlet and the handheld sprayer. Place the handheld sprayer in its holder.
4. **Test System:** Slowly turn on the main water supply and check all connections for leaks. Test each shower function to ensure proper operation and water flow.

6. OPERATING INSTRUCTIONS

Your MFLASMF shower system features a single handle for controlling water flow and temperature, and a diverter to select between the three shower functions.

6.1 Water Flow and Temperature Control

- **Turn On/Off:** Lift the single handle to turn on the water flow. Push it down to turn off.
- **Adjust Flow:** The further you lift the handle, the greater the water flow.
- **Adjust Temperature:** Rotate the handle left for hot water and right for cold water. Adjust gradually to achieve your desired temperature.

6.2 Function Selection (Diverter)

The diverter knob allows you to switch between the rain shower head, handheld sprayer, and body spray massage jets. **Note:** Only one function can be active at a time. You cannot use all shower heads simultaneously.

- **Rain Shower Head:** Turn the diverter to the designated position for the rain shower. This provides a consistent, powerful rain shower experience.
- **Handheld Sprayer:** Turn the diverter to the position for the handheld sprayer. This offers flexibility for rinsing specific areas, cleaning the shower, or bathing children and pets.
- **Body Spray Massage Jets:** Turn the diverter to the position for the body spray jets. These horizontal spray heads can be adjusted for direction (up, down, left, right rotation) to provide a targeted massage.



Image 6: The MFLASMF shower system in operation, demonstrating the powerful streams from the body spray jets.



Image 7: The rain shower head delivering a wide, consistent flow of water, providing a full-body shower experience.

7. MAINTENANCE AND CARE

Regular cleaning and maintenance will ensure the longevity and optimal performance of your MFLASMF shower system.

7.1 Cleaning the Shower Heads

The rain shower head and handheld sprayer feature easy-to-clean rubber nozzles. Mineral deposits (limescale) can accumulate over time, affecting spray patterns.

- **To Clean:** Simply rub the rubber nozzles with your finger or a soft cloth to dislodge any mineral buildup.
- For stubborn deposits, use a mild descaling solution specifically designed for bathroom fixtures. Avoid abrasive cleaners or harsh chemicals, as these can damage the finish.



Image 8: Close-up view of the rubber nipples on the shower head, highlighting their design for easy cleaning of mineral deposits.

7.2 General Cleaning

- Clean the black finish with a soft, damp cloth and mild soap.
- Do not use abrasive sponges, scouring pads, or chemical cleaners containing ammonia, bleach, or alcohol, as these can damage the finish.
- Wipe dry with a soft cloth to prevent water spots.

7.3 Concealed Valve Maintenance

The embedded box design allows for easier maintenance of the control valve. If the valve core ever needs replacement, it can be accessed and replaced without removing the entire wall, simplifying future repairs.

8. TROUBLESHOOTING

This section addresses common issues you might encounter with your shower system.

Problem	Possible Cause	Solution
---------	----------------	----------

Low Water Pressure	Clogged shower head nozzles; partially closed water supply valve; debris in pipes.	Clean rubber nozzles on shower heads. Ensure main water supply valve is fully open. Flush pipes before installation (if not already done).
Leaking from Connections	Loose connections; damaged O-rings or seals; improper thread sealant.	Turn off water supply. Tighten connections. Inspect and replace O-rings/seals if damaged. Reapply thread sealant if necessary.
Water Temperature Issues	Improper adjustment of single handle; issues with home water heater.	Adjust the single handle slowly to find desired temperature. Check your home's water heater settings.
Diverter Not Switching Functions	Debris in diverter mechanism; worn diverter cartridge.	Contact customer support for assistance. Professional inspection may be required.

9. WARRANTY AND SUPPORT

For any after-sales problems, concerns, or warranty inquiries, please contact MFLASMF customer service. Provide your product model and purchase details for efficient assistance. We are committed to providing professional after-sales support.

Please refer to your purchase documentation or the seller's information for specific warranty terms and contact details.