

## Manuals+

[Q & A](#) | [Deep Search](#) | [Upload](#)

Manuals.plus /

› [PETYELLA](#) /

› PETYELLA Deluxe Heated Cat House for Winter - Small Tiles Instruction Manual

## PETYELLA PY02

# PETYELLA Deluxe Heated Cat House for Winter - Small Tiles Instruction Manual

Model: PY02

Brand: PETYELLA

## INTRODUCTION

---

Thank you for choosing the PETYELLA Deluxe Heated Cat House. This product is designed to provide a warm, safe, and comfortable shelter for your feline companion during cold weather, suitable for both indoor and outdoor use. This manual provides detailed instructions for assembly, operation, maintenance, and troubleshooting to ensure optimal performance and safety.

## SAFETY INFORMATION

---

Please read all safety instructions carefully before using the product. Failure to follow these instructions may result in injury or damage.

- Always follow the manufacturer's instructions for installing, using, and maintaining the product.
- Regularly inspect the power cord and plug for any signs of damage. Do not use if the cord is frayed or damaged.
- Ensure the heating pad is used only with the provided cover and placed securely within the cat house.
- Do not immerse the heating pad or electrical components in water.
- Keep the product away from flammable materials.
- For outdoor use, ensure the power outlet is weatherproof and protected from moisture.
- Regularly test safety devices such as Ground Fault Circuit Interrupters (GFCIs) and Arc Fault Circuit Interrupters (AFCIs) to ensure they are functioning properly.
- The heating pad is designed to provide a gentle, consistent warmth. It may not feel intensely hot to the touch, but it is effective for pets.

# Convenient and speedy assembly

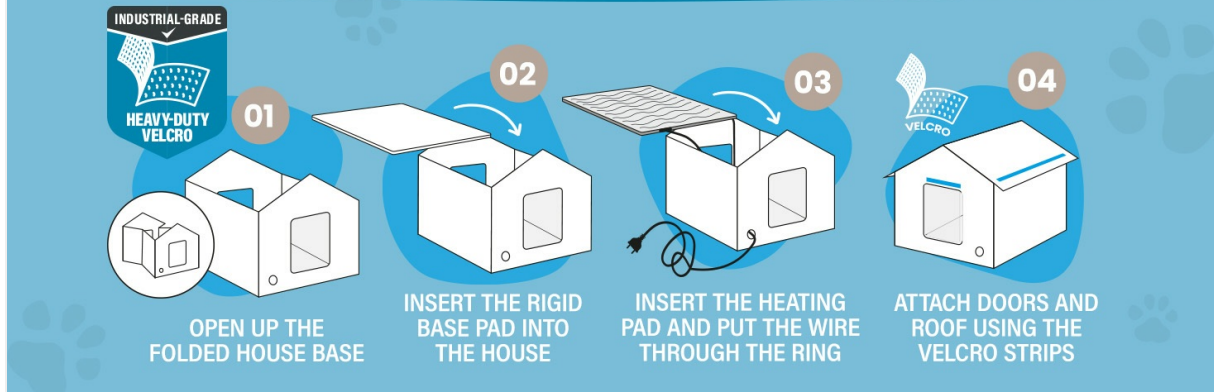


Image: Safety certifications and a diagram illustrating the multi-layered insulation and heating wire within the cat house structure.

## PACKAGE CONTENTS

Verify that all components are present before assembly:

- Folding insulated pet house (main structure)
- Roof panel
- Heated mat with chew-proof cord
- Soft washable cover for heating mat
- Two removable door flaps

## SETUP AND ASSEMBLY

The PETYELLA Deluxe Heated Cat House is designed for quick and tool-free assembly.

1. **Open the Folded House Base:** Unfold the main structure of the cat house to form its basic shape. Ensure all sides are upright and secure.
2. **Insert the Rigid Base Pad:** Place the rigid base pad into the bottom of the house. This provides structural stability and insulation.
3. **Insert the Heating Pad:** Place the heating pad, covered with its soft washable cover, inside the house on top of the rigid base pad. Route the power cord through the designated opening or ring to the exterior of the house.
4. **Attach Doors and Roof:** Secure the roof panel to the top of the house using the integrated Velcro strips. Attach the two removable door flaps to the entrances using their Velcro fasteners. These flaps can be removed for warmer weather or to help cats adjust to the house.

# Quick Assembly & Easy to Clean

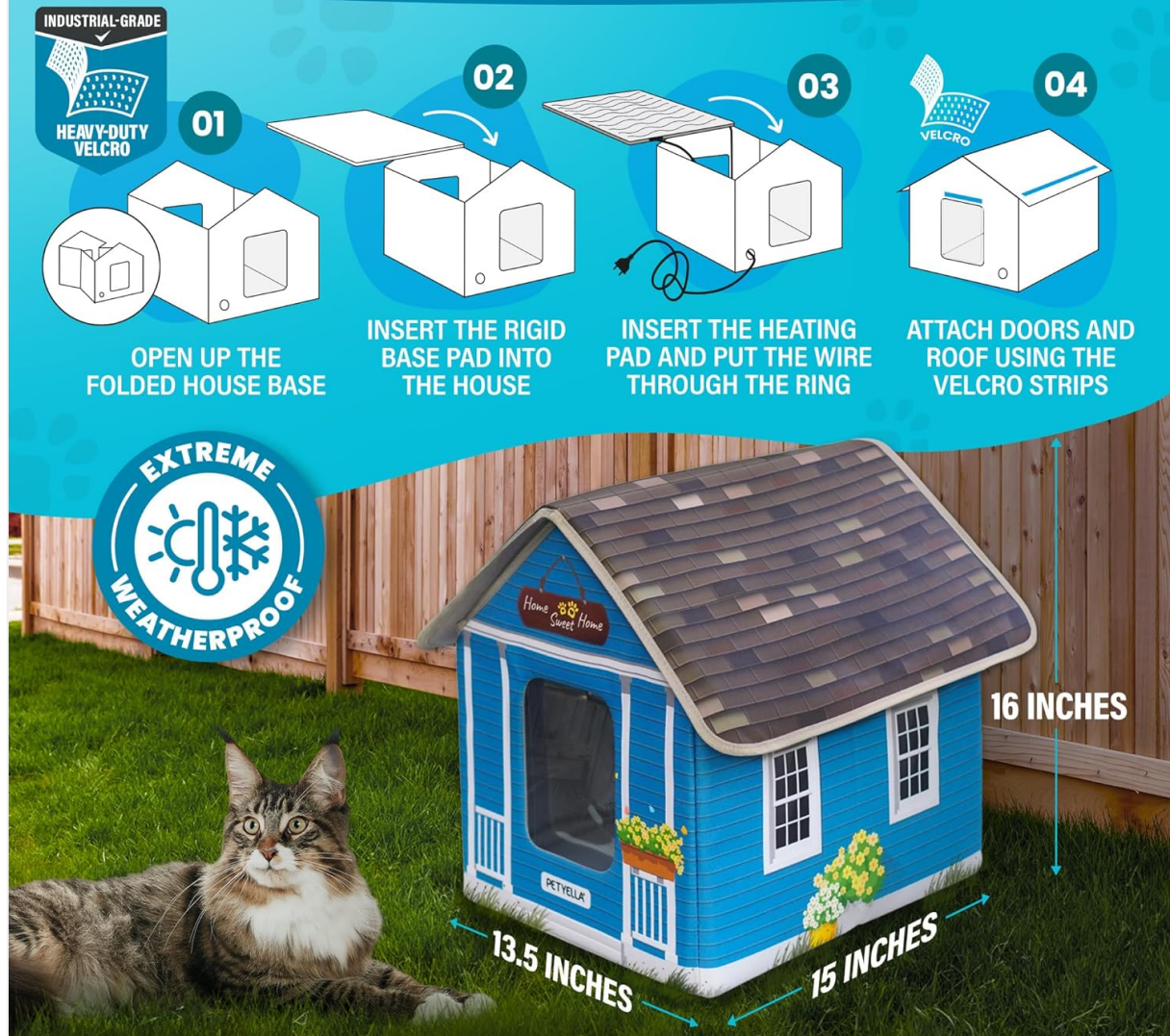


Image: Visual guide demonstrating the four simple steps to assemble the cat house, including unfolding the base, inserting the rigid pad, placing the heating pad, and attaching the roof and doors.

Image: A detailed diagram illustrating the convenient and speedy assembly process of the cat house.

## OPERATING INSTRUCTIONS

### Using the Heated Mat

The heated mat provides a safe and consistent warmth for your pet. Once assembled, plug the chew-proof cord into a suitable electrical outlet. For outdoor use, ensure the outlet is weatherproof and protected.

- The heating pad is designed to maintain a comfortable temperature for pets, typically between 100°F - 122°F (38°C - 50°C) internally, which translates to a warm but not hot surface temperature for the animal.
- The mat will automatically regulate its temperature. No manual adjustments are typically needed.
- Always ensure the heating pad is covered by its soft, washable cover to prevent direct contact with the pet and to distribute heat evenly.

### Dual Escape Doors

The cat house features two doors for easy entry and exit, which also provides an escape route for your pet.

The clear removable door flaps help to retain heat and block drafts during colder months. In warmer weather, these flaps can be removed to improve airflow and allow for an all-season shelter.



Image: The PETYELLA Deluxe Heated Cat House, illustrating its design and the heating pad's function, with a cat enjoying the warmth.

## MAINTENANCE AND CLEANING

---

Regular cleaning will ensure the longevity and hygiene of your cat house.

- **Heating Pad Cover:** The soft cover of the heating pad is removable and washable. Follow the care instructions on the label for best results.
- **Exterior Cleaning:** The exterior surfaces of the cat house can be wiped clean with a damp cloth and mild soap. Avoid harsh chemicals.

- **Interior Cleaning:** For deeper cleaning, the house can be disassembled. Wipe down interior surfaces with a damp cloth. Ensure all parts are completely dry before reassembly and use.
- **Inspection:** Periodically inspect the house for any wear and tear, especially the integrity of the fabric and seams, and the condition of the electrical cord.



**Waterproof exterior for a dry cozy house**

Image: A close-up view of the heating pad, highlighting its removable and washable cover for easy maintenance.



Image: A hand cleaning the exterior of the cat house with a blue cloth, demonstrating the ease of cleaning its waterproof surfaces.

## TROUBLESHOOTING

Problem	Possible Cause	Solution
Heating pad not warming up.	Not plugged in, faulty outlet, damaged cord, or internal malfunction.	<p>Ensure the power cord is securely plugged into a working outlet.</p> <p>Test the outlet with another appliance.</p> <p>Inspect the cord for damage. If damaged, discontinue use and contact support.</p> <p>Remember the pad provides gentle warmth, not intense heat.</p>

Problem	Possible Cause	Solution
Cat is not using the house.	Unfamiliarity, preference for other spots, or initial hesitation.	Place familiar bedding or toys inside. Sprinkle a small amount of catnip inside the house. Ensure the house is in a quiet, safe location. Remove door flaps initially to encourage entry. Allow time for the cat to adjust.
House appears damp inside.	Extreme weather conditions, improper placement, or door flaps not fully secured.	Ensure the house is placed in a sheltered area, if possible, to minimize direct exposure to heavy rain or snow. Verify door flaps are properly attached to reduce moisture entry. Check for any tears or damage to the house material.

## SPECIFICATIONS

---

- **Model:** PY02
- **Product Dimensions:** 15"D x 13"W x 16"H
- **Item Weight:** Approximately 4.6 pounds (2.09 Kilograms)
- **Material:** Polyester
- **Color:** Blue (Small Tiles pattern)
- **Included Components:** Folding insulated pet house with roof, heated mat (with cover), 2 door flaps.
- **Specific Uses:** Indoor, Outdoor
- **Heating Pad Temperature:** Designed to maintain a comfortable temperature for pets (approx. 100°F - 122°F internal).

## WARRANTY AND SUPPORT

---

For warranty information or product support, please contact PETYELLA customer service through the retailer where the product was purchased or visit the official PETYELLA website. Please have your model number (PY02) and purchase date available when contacting support.

**PETYELLA Store Link:** [Visit the PETYELLA Store on Amazon](#)