

BESTTEN DK1-ET-BK-2PK

BESTTEN Keyed Alike Exterior Door Knob and Single Cylinder Deadbolt Combo Set (2-Pack, Matte Black)

Model: DK1-ET-BK-2PK

INTRODUCTION

This manual provides detailed instructions for the installation, operation, and maintenance of your BESTTEN Keyed Alike Exterior Door Knob and Single Cylinder Deadbolt Combo Set. Please read these instructions carefully before installation and use to ensure proper function and safety.

PACKAGE CONTENTS

Verify that all components are present before beginning installation:

- Exterior Door Knobs (2)
- Single Cylinder Deadbolts (2)
- Latches (2)
- Strike Plates (2)
- Reinforcement Plates (2)
- Machine Screws
- Wood Screws
- Keys (6, keyed alike)
- Installation Template

Full Set of Accessories



Figure 1: Full Set of Accessories for the BESTTEN Door Lock Combo Set.

PRODUCT DIMENSIONS

Ensure your door dimensions are compatible with the lock set. Key dimensions are:

- Lock body outside diameter: 2.54 inches (64.6mm)
- Adjustable latch for 2-3/8 inches - 2-3/4 inches (60-70mm) backset
- Fits door thickness from 1-3/8 inches to 1-3/4 inches (35-45mm)

Product Dimension

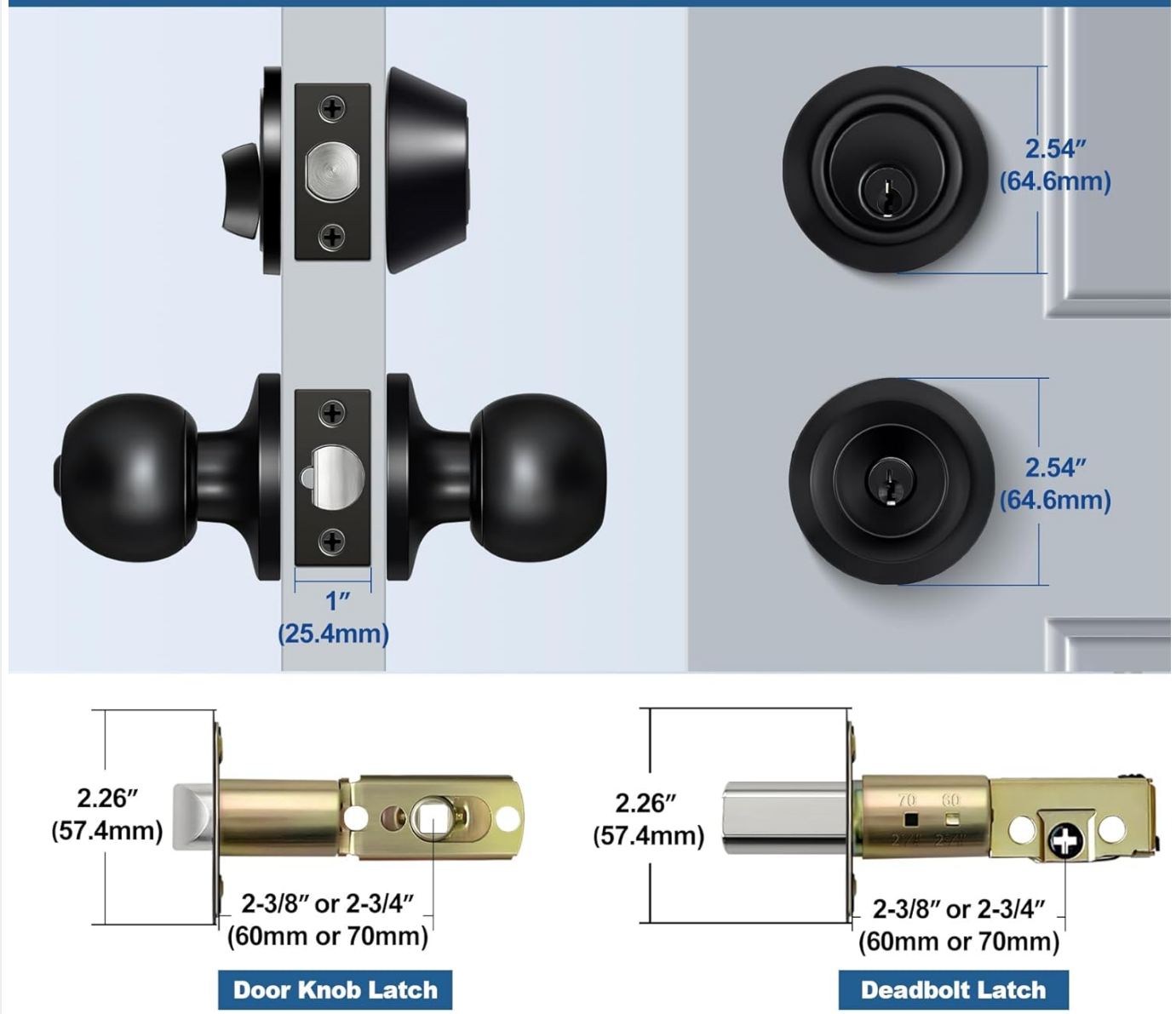


Figure 2: Product Dimensions for Deadbolt and Door Knob Components.

INSTALLATION

Important Note: The machine screws come preinstalled in the handle. Please remove them before installation.



The machine screws come preinstalled in the handle. Remove them before installation.

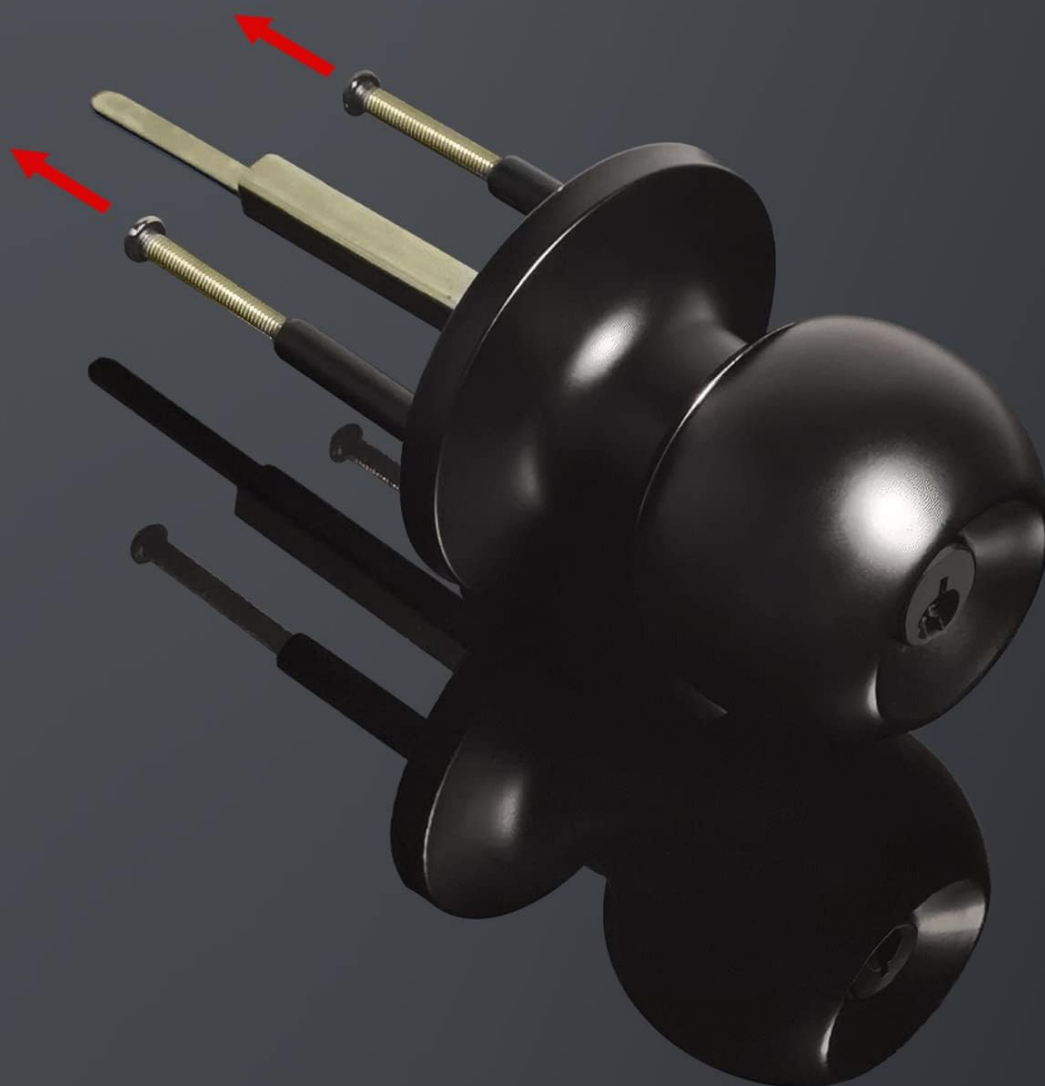


Figure 3: Removing Pre-installed Screws.

General Installation Video

Your browser does not support the video tag.

Video 1: BESTTEN Door Lock Set Installation Guide. This video provides a comprehensive overview of the installation process for both the door knob and deadbolt components.

Deadbolt Lock Installation

1. **Select Proper Backset:** Adjust the latch to either 2-3/8" (60mm) or 2-3/4" (70mm) as required for your door.
2. **Install Latch:** Insert the latch into the door edge, ensuring the bolt is retracted. Secure with two (S1) latch screws.
3. **Install Outside Cylinder Housing:** Insert the outside cylinder housing. Ensure the torque blade is inserted vertically into the cross-shaped crank of the deadbolt latch for proper timing. The keyhole must be oriented as shown in the diagram.
4. **Test Inside Knob:** Turn the thumb-turn knob to lock (horizontal to vertical, should click) and unlock (vertical to horizontal, no sound).

5. **Install Thumbturn Assembly:** Keep the thumbturn knob in the vertical position for easy screw installation.
6. **Final Test:** Always test the proper function of the deadbolt before closing the door.

Door Knob Installation

1. **Select Proper Backset:** Adjust the latch to either 2-3/8" (60mm) or 2-3/4" (70mm) as required for your door.
2. **Remove Pre-installed Screws:** As noted above, remove the machine screws from the handle before proceeding.
3. **Install Latch:** Insert the latch into the door edge, ensuring the bolt is retracted. Secure with two (S1) latch screws.
4. **Installation Tips:** During installation, make sure that the lock tailpiece and the thumb-turn knob are in the same position, either vertical or horizontal. Insert the lock tailpiece into the slot behind the thumb-turn knob. Refer to the diagram for correct orientation.

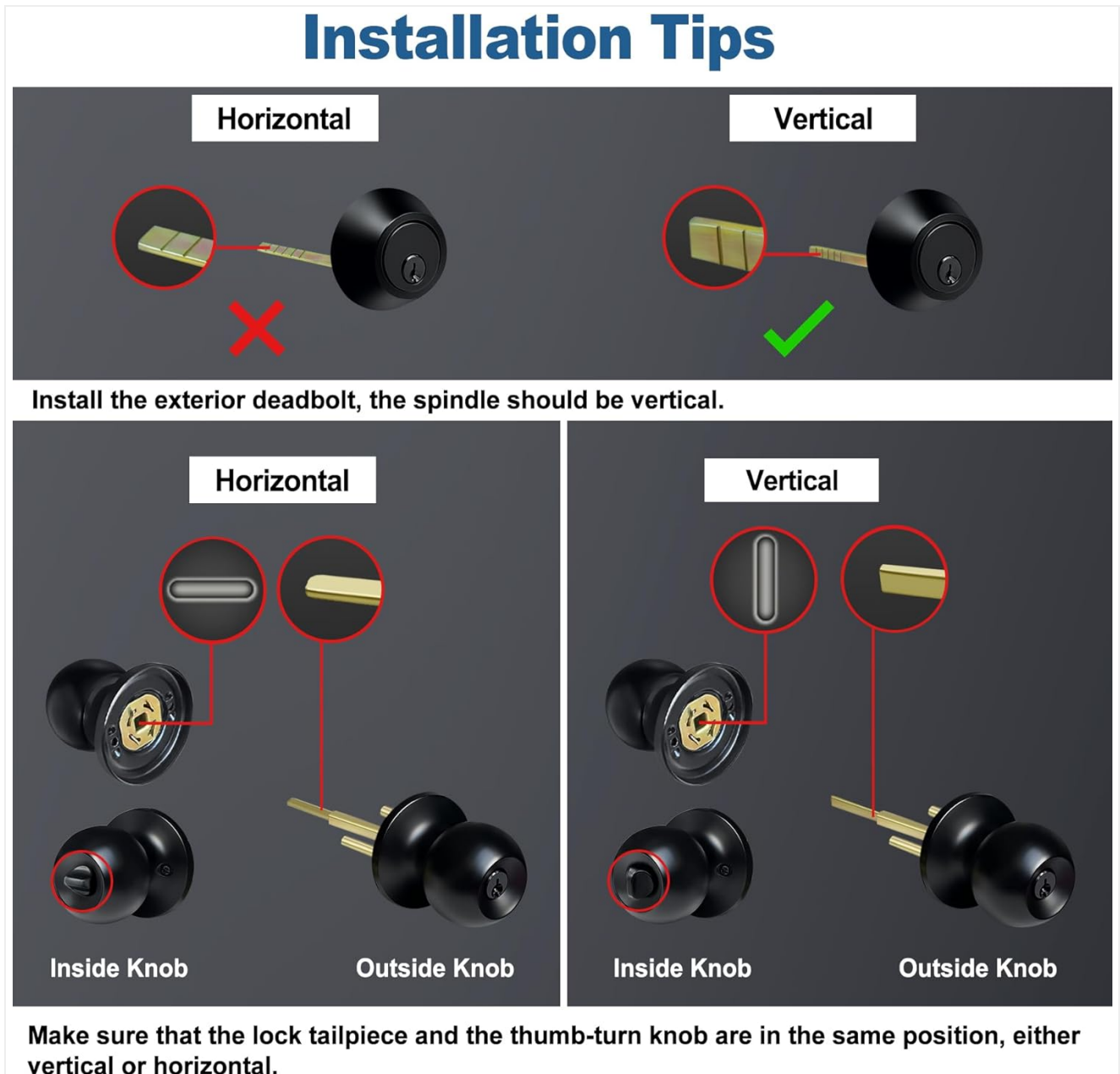


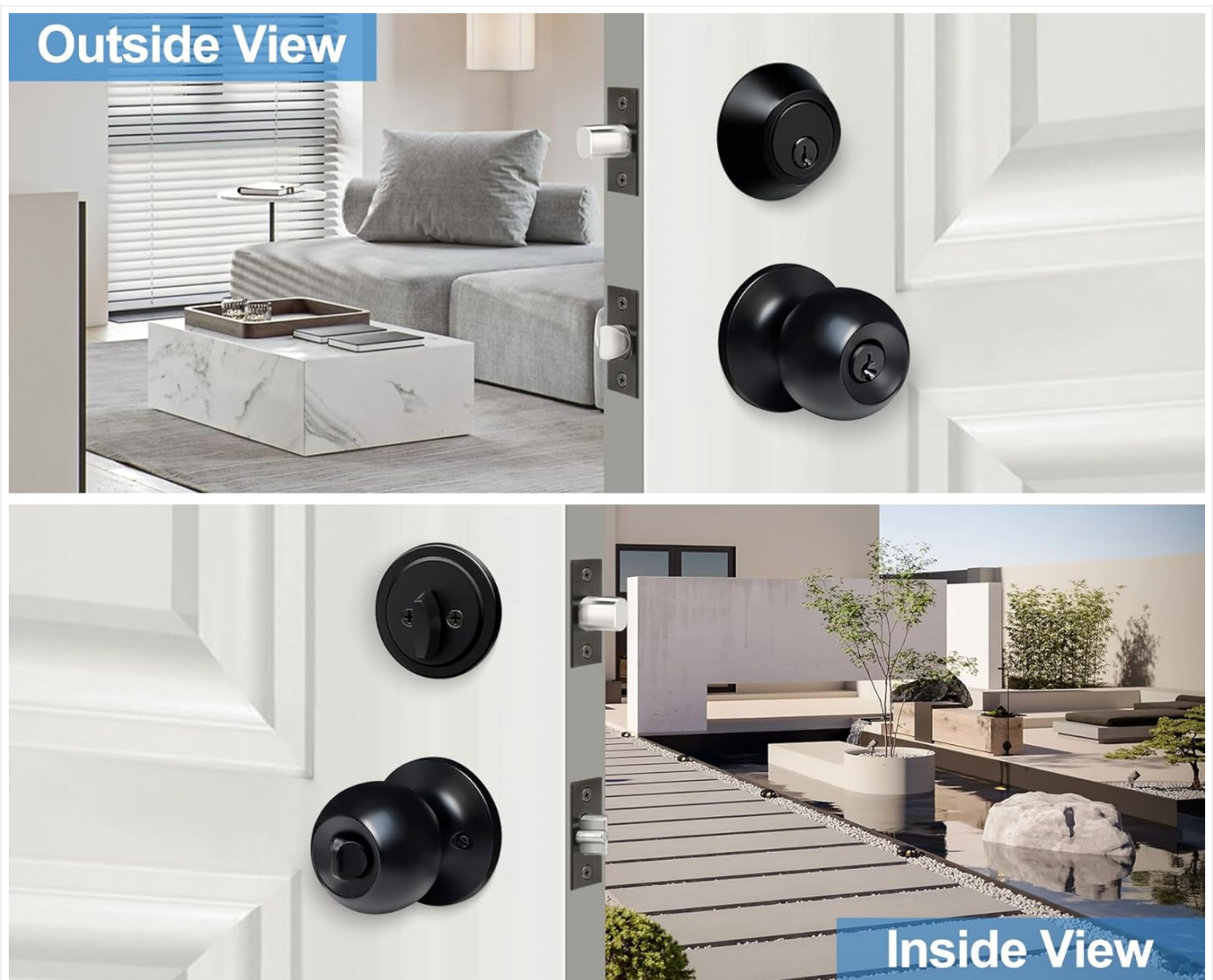
Figure 4: Door Knob Installation Tips for Tailpiece Orientation.

5. **Test Outside Knob:** Turn the outside knob to test operation. Rotate the lock tailpiece from vertical to horizontal; you should hear a click.
6. **Install Inside Knob:** Insert the two (S2) machine screws that were removed earlier through the holes in the door rosette and tighten.
7. **Final Test:** Always test the proper function of the door knob and latch before closing the door.

OPERATION

Your BESTTEN lock set features keyed-alike convenience, meaning all locks in the set operate with the same key. This set is designed for residential exterior or interior doors where keyed entry or security is needed.

- **Locking from Exterior:** Insert the key into the deadbolt or door knob cylinder and turn to engage the lock.
- **Unlocking from Exterior:** Insert the key into the deadbolt or door knob cylinder and turn to disengage the lock.
- **Locking Deadbolt from Interior:** Turn the thumb-turn knob on the interior side of the deadbolt to the horizontal position.
- **Unlocking Deadbolt from Interior:** Turn the thumb-turn knob on the interior side of the deadbolt to the vertical position.
- **Operating Door Knob from Interior:** The interior door knob can be turned to open the door at any time.



KEYED ALIKE CONVENIENCE

Best used for residential exterior or interior doors where keyed entry or security is needed.

Figure 5: Keyed Alike Convenience for Exterior and Interior Doors.

MAINTENANCE

To ensure the longevity and smooth operation of your lock set, follow these maintenance tips:

- **Cleaning:** Clean the lock set regularly with a soft, damp cloth. Avoid abrasive cleaners or solvents that could damage the matte black finish.
- **Lubrication:** Apply a small amount of graphite lubricant or a silicone-based lubricant to the keyway and latch mechanism annually, or if operation becomes stiff. Do not use oil-based lubricants as they can attract dirt.
- **Tightening Screws:** Periodically check and tighten all mounting screws to ensure the lock set remains securely fastened to the door.

TROUBLESHOOTING

Problem	Possible Cause	Solution
Key does not turn smoothly or gets stuck.	Dirt in keyway, lack of lubrication, bent key.	Clean keyway with compressed air, apply graphite lubricant, check key for damage.
Latch bolt does not extend or retract fully.	Misalignment, debris in mechanism, worn parts.	Check alignment of latch and strike plate, clean mechanism, ensure screws are tight.
Door knob feels loose or wobbly.	Loose mounting screws.	Tighten the machine screws on the interior rosette.
Deadbolt thumb-turn does not operate.	Incorrect torque blade orientation during installation.	Re-check deadbolt installation, ensuring the torque blade is vertical. Refer to installation steps.

SPECIFICATIONS

- **Brand:** BESTTEN
- **Model Number:** DK1-ET-BK-2PK
- **Material:** Metal
- **Finish Type:** Powder Coated (Matte Black)
- **Lock Type:** Combination Lock (Keyed Entry Door Knob & Single Cylinder Deadbolt)
- **Backset:** Adjustable 2-3/8" (60mm) or 2-3/4" (70mm)
- **Door Thickness:** 1-3/8" (35mm) to 1-3/4" (45mm)
- **Keyway:** KW1
- **Keys:** 6 keys, keyed alike
- **Item Weight:** 3.65 pounds
- **Package Dimensions:** 7.36 x 6.81 x 6.46 inches

WARRANTY AND SUPPORT

For warranty information or technical support, please refer to the contact details provided with your product packaging or visit the official BESTTEN website. Keep your purchase receipt for warranty claims.

