

Manuals.plus /

› WellToBe /

› WellToBe Automatic Cat Feeder (Model NS38D) User Manual

WellToBe NS38D

WellToBe Automatic Cat Feeder (Model NS38D) User Manual

Your guide to setting up and operating your automatic pet feeder.

[Setup](#)

[Operation](#)

[Maintenance](#)

[Troubleshooting](#)

[Specifications](#)

[Warranty & Support](#)

INTRODUCTION

Thank you for choosing the WellToBe Automatic Cat Feeder (Model NS38D). This device is designed to provide scheduled and portion-controlled meals for your cats and small dogs, ensuring they maintain healthy eating habits. Please read this manual thoroughly before use to ensure proper setup and operation.



Image: The WellToBe Smart Automatic Pet Feeder, shown with a puppy and kitten, highlighting its timed quantification, smart feeding, and

safe design features.

PACKAGE CONTENTS

Ensure all items are present in the package:

- WellToBe Automatic Pet Feeder Unit
- Food Tank
- Lid
- Stainless Steel Bowls (x2)
- Bowl Holders (x2)
- 2-Way Food Splitter
- Power Adapter
- USB Cable
- Desiccant Bag
- User Manual (this document)

SAFETY PRECAUTIONS

- Use only dry kibble with a diameter of 2-15mm.
- Do not wash the feeder base; it contains electronic components.
- Keep the feeder on a stable, level surface.
- Ensure pets cannot tip over the feeder.
- For indoor use only.
- Keep out of reach of children.

1. SETUP GUIDE

1.1 Assembly

1. **Open the Lid:** Press the lid release button and lift the lid to access the food tank.



Image: A hand opening the top lid of the feeder unit.

2. **Insert Desiccant Bag:** Place the provided desiccant bag into the designated compartment under the lid to keep food fresh. Replace every half a month.



Image: A desiccant bag being placed into a compartment on the underside of the feeder's lid.

- 3. Install Food Bowls:** Place the stainless steel bowls into their holders. Attach the 2-way splitter if feeding two pets, or use a single bowl setup.

Movable Single And Double Basin

The detachable 2-way splitter can feed two pets at the same time, you can also assemble it into a usual feeder as you like.



Image: The WellToBe Automatic Pet Feeder showing its dual bowl setup with a 2-way splitter, designed to feed two pets simultaneously. Dimensions are indicated as 13.6 inches high, 8.3 inches wide, and 10.4 inches deep.

4. **Fill Food Tank:** Pour dry kibble into the food tank. Ensure the kibble size is between 2-15mm. Close the lid securely.

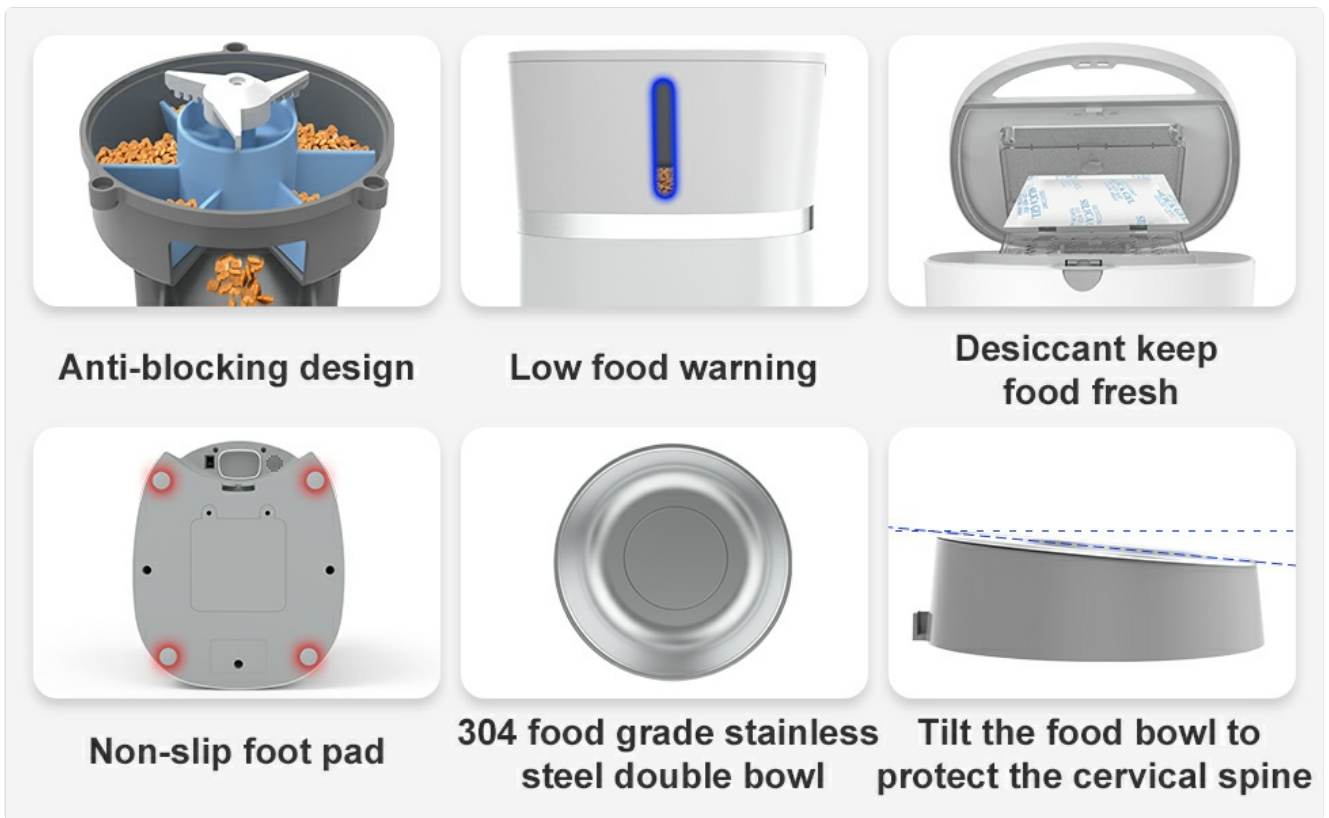


Image: A person pouring dry kibble into the open food tank of the WellToBe Automatic Pet Feeder.

1.2 Power Supply

The feeder supports dual power supply options:

- **Adapter Power:** Connect the power adapter to the feeder and plug it into a wall outlet. This is the primary power source.
- **Battery Backup:** For uninterrupted operation during power outages, insert 4 D-size alkaline batteries (not included) into the battery compartment at the bottom of the feeder. When switching from plug power to battery power, the machine will restart for a self-check. Replace all batteries simultaneously for stable operation.

Dual Power Supply

Power adapter and 4 alkaline D-cell batteries.
Backup battery ensures food supply during power outages.
With memory function, no need to reset feeding schedule after power off.



Image: Diagram illustrating the dual power supply of the WellToBe Automatic Pet Feeder, showing the power adapter connection and the battery compartment for 4 D-size batteries.

1.3 Wi-Fi Connection (for App Control)

To utilize smart feeding features via the mobile app, connect the feeder to a 2.4GHz Wi-Fi network. **Note:** The Wi-Fi module may not function sufficiently when using only battery power without the adapter.



Image: The WellToBe Automatic Pet Feeder next to a smartphone displaying its control application, indicating Wi-Fi connectivity for remote feeding management.

2. OPERATING INSTRUCTIONS

2.1 Manual Feeding

The feeder can be operated manually directly on the unit without a network connection. Refer to the display and buttons on the feeder for manual meal scheduling and dispensing.

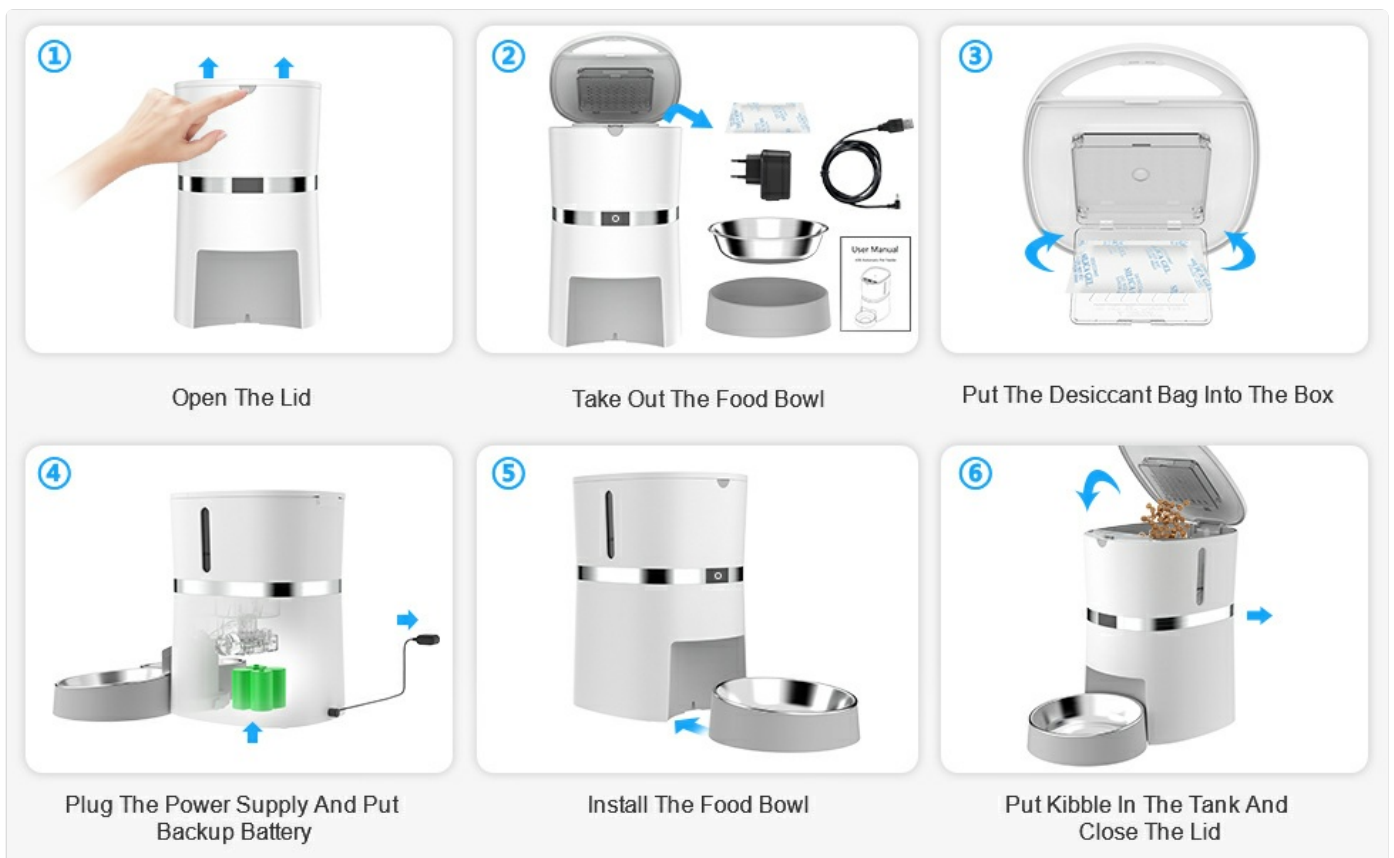


Image: A cat eating from the WellToBe Automatic Pet Feeder, with an inset showing the manual control panel on the feeder and a hand holding a smartphone displaying the feeder's app.

2.2 Smart App Control

Download the WellToBe app (available for iOS and Android) to manage feeding schedules remotely.

- **Create Feeding Plans:** Set up to 6 meals daily. Each meal can dispense 1-48 portions (approximately 0.28 oz or 1/16 cup per portion). This helps manage pet weight and prevent overeating.
- **Remote Feeding:** Dispense food instantly from anywhere using the app.
- **Voice Recording:** Record a 10-second personalized voice message that plays before each meal. This can call your pet to eat. The sound can also be turned off.

Recording 10s Message

Record your voice to remind pets to dine. If you feel noisy, you can also turn off the recording and get a good night's sleep on the weekend.



Image: The WellToBe Automatic Pet Feeder with a speech bubble indicating a 10-second voice message ("Maggie, time to eat") being played, with a small dog approaching the feeder.

Smartphone APP Control

Control your pet's meals from anywhere using your smartphone, APP sets the time and amount of each meal.

Note: Require 2.4GHz Network



sleep



work



party

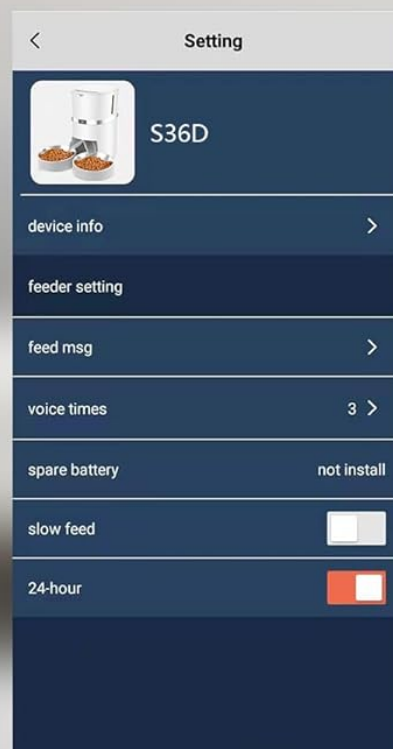
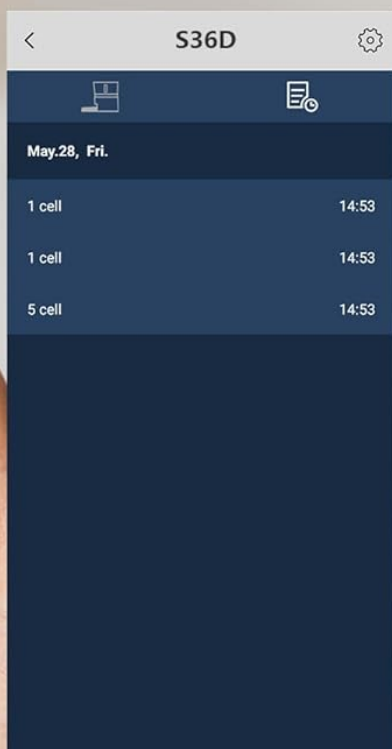
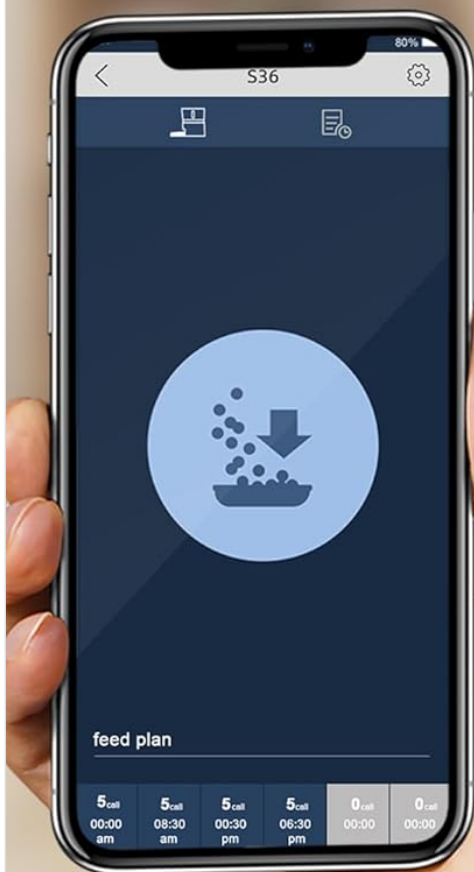


Image: The WellToBe Automatic Pet Feeder illustrating its flexible meal settings (up to 6 meals per day, 4L food tank, 5-12mm kibble recommendation, 1/16-3 cups per meal) and infrared detection technology to prevent food from getting stuck or overflowing. A puppy and kitten are shown nearby.

Never Miss A Meal

Flexible meal settings, connect to Wi-Fi remote control, set meal schedules, and can also add meals manually. You can set up to 6 meals a day, and one meal can be up to 3 cups.

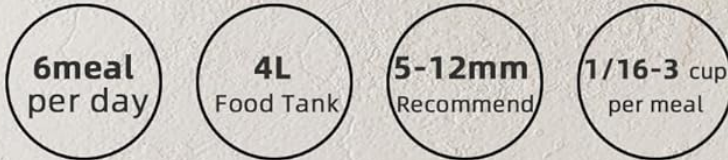


Image: A smartphone displaying the WellToBe app interface for controlling the pet feeder, showing options for device info, feeder settings, feed messages, voice times, spare battery status, slow feed, and 24-hour settings. The app requires a 2.4GHz network.

3. MAINTENANCE

3.1 Cleaning

- **Detachable Parts:** The food tank, lid, stainless steel bowls, and food splitter are detachable and washable. Hand

wash these components with mild soap and water, then dry thoroughly before reassembly.



Image: The WellToBe Automatic Pet Feeder disassembled, showing its detachable components like the food tank, lid, splitter, and bowls, indicating they are easy to clean.

- **Feeder Base:** Do not immerse the feeder base in water or wash it directly. Wipe the exterior with a damp cloth.

3.2 Desiccant Bag Replacement

Replace the desiccant bag every half a month to maintain food freshness. Specific replacement bags can be purchased from the manufacturer or authorized retailers.

4. TROUBLESHOOTING

- **Feeder Not Dispensing Food:**
 - Check if the food tank is empty.
 - Ensure kibble size is within 2-15mm to prevent clogging.
 - Verify power supply (adapter plugged in, batteries installed and charged).
 - Check for any obstructions in the dispensing mechanism. The feeder features an anti-blocking design.
- **Wi-Fi Connectivity Issues:**
 - Confirm your Wi-Fi network is 2.4GHz. The feeder does not support 5GHz networks.
 - Ensure the feeder is within range of your Wi-Fi router.
 - If using only battery power, connect the adapter as the Wi-Fi module may not receive sufficient power.
 - Restart the feeder and your router.
- **Uneven Food Distribution (Dual Bowls):**
 - While the feeder is designed for dual dispensing, slight variations in portion size between bowls can occur due to kibble shape and density. This is generally within acceptable limits.
 - Ensure the splitter is correctly installed and not obstructed.
- **Low Food Warning Light:**
 - The feeder is equipped with a low food warning indicator. Refill the food tank when this light activates.
- **Feeder Tipping Over:**
 - Place the feeder in a corner or against a wall to prevent pets from knocking it over.
 - The feeder has non-slip foot pads for stability.

5. SPECIFICATIONS

Model Name	NS38D
Capacity	4 Liters (stores approximately 1.6kg of dry food)
Kibble Size	2-15mm diameter (dry food only)
Meals Per Day	Up to 6 meals
Portions Per Meal	1-48 portions (approx. 0.28 oz / 1/16 cup per portion)
Voice Recording	10 seconds
Power Supply	DC 5V/1A Power Adapter (primary), 4 x D-size batteries (backup)
Wi-Fi Connectivity	2.4GHz only
Material	Stainless Steel (bowls)
Dimensions (LxWxH)	8 x 7 x 10 inches (Product Dimensions)
Item Weight	5.26 pounds
Target Species	Cat, Dog, Small animals

6. WARRANTY INFORMATION

The WellToBe Automatic Cat Feeder (Model NS38D) comes with a **1-year warranty** from the date of purchase. This warranty covers manufacturing defects and malfunctions under normal use. It does not cover damage caused by misuse, accidents, unauthorized modifications, or failure to follow the instructions in this manual.

Please retain your proof of purchase for warranty claims.

7. CUSTOMER SUPPORT

For technical assistance, troubleshooting, or warranty inquiries, please contact WellToBe customer support through the following channels:

- **Website:** Visit the official WellToBe website for FAQs and support contact information.
- **Email:** Refer to your product packaging or the WellToBe website for the customer service email address.
- **Online Store:** You can also visit the WellToBe Store on Amazon for product information and support options.

When contacting support, please have your product model (NS38D) and purchase details ready.