

Phomemo LT12

Phomemo LT12 Label Maker Machine User Manual

Model: LT12

INTRODUCTION

This user manual provides comprehensive instructions for the Phomemo LT12 Label Maker Machine. It covers setup, operation, maintenance, and troubleshooting to ensure optimal performance and longevity of your device. Please read this manual thoroughly before using the label maker.

Your browser does not support the video tag.

Video 1: Overview of the Phomemo LT12 Portable Label Maker.

WHAT'S IN THE BOX

Upon unboxing your Phomemo LT12 Label Maker, please verify that all the following items are included:

- 1 x Phomemo LT12 Label Maker
- 1 x Black on white label tape (12mm*4m)
- 1 x Type-C Charging Cable
- 1 x Quick Guide

The **Best Gift** for Your Family & Friends



Figure 1: Product Packing List

SETUP

1. Device Overview

Familiarize yourself with the key components of your Phomemo LT12 Label Maker:

LCD Screen: Displays text, settings, and status.

QWERTY Keyboard: For direct text input.

Label Exit: Where printed labels emerge.

Cutter: Manual cutter for labels.

USB Port: For charging the device.

Power Button: To turn the device on/off.



Figure 2: Phomemo LT12 Label Maker Front View

The **Best Gift** for Your Family & Friends



Figure 3: Phomemo LT12 Label Maker Key Components

2. Charging the Device

The Phomemo LT12 Label Maker is equipped with a 1200mAh high-capacity lithium battery. To charge the device, connect the provided Type-C charging cable to the USB port on the side of the label maker and plug the other end into a compatible USB power adapter (not included). The device can be used while charging.

3. Inserting the Tape Cassette

Follow these steps to properly install a label tape cassette:

1. Open the tape cassette compartment cover located at the top of the device.
2. Pull out a section of the label tape (approximately 1 inch or 3 cm) through the paper outlet of the cassette.
3. Insert the tape cassette into the compartment, ensuring it clicks firmly into place.
4. Close the tape cassette compartment cover.

Multi-functional labels

Waterproof, oilproof and scratch-resistant



Figure 4: Inserting the Label Tape Cassette

Your browser does not support the video tag.

Video 2: How to install the label tape in the Phomemo LT12 Label Maker.

OPERATION

1. Printing from the Device (QWERTY Keyboard)

The LT12 features a full QWERTY keyboard for direct label creation:

1. Press the **Power** button until the display lights up.
2. Type your desired text using the QWERTY keyboard. You can adjust font size, style, and add symbols using the function keys.
3. Press the **Print** button to initiate printing.
4. Once the label is printed, press the **Cutter** button on the side to cut the label.
5. Tear off the backing paper from the back of the label along the easy-tear line and attach it to a dry, flat object.

Your browser does not support the video tag.

Video 3: How to print directly from the Phomemo LT12 Label Maker using its keyboard.

2. Printing from Your Mobile Device (Bluetooth)

For advanced customization and ease of use, connect your LT12 to your smartphone or tablet via Bluetooth using the "Print Master" application:

1. Download the "Print Master" app from your phone's app store (available for Android and iOS).
2. Turn on the Bluetooth function on your LT12 Label Maker (Settings -> Bluetooth -> ON).
3. Open the "Print Master" app and follow the auto-connect guidelines to search for and connect to your LT12 device.
4. Once connected, you can design your labels within the app, utilizing various fonts, symbols, borders, and even images.
5. Press the print icon in the app to send the label design to your LT12 for printing.



Figure 5: Bluetooth Connection Steps

Your browser does not support the video tag.


Video 4: How to print from your mobile device using the Phomemo LT12 Label Maker.

3. Customizing Labels

The Phomemo LT12 offers extensive customization options:

- **Font Options:** Choose from 3 font sizes, 4 font decorations, and over 160 fonts via the app.
- **Symbols & Borders:** Access 791+ symbols and 287+ border/underline styles.
- **Multi-language Support:** Supports 14 national languages.
- **Tape Versatility:** Compatible with 12mm thermal paper and thermal transfer supplies, including solid color, pattern, silk, and fabric iron-on labels. Labels are waterproof, oil-proof, scratch-proof, sun-proof, and resistant to high and low temperatures.

Multi-functional Editing



3+
Font Size

ABC ABC ABC

English العربية 한국어
Русский язык Português עברית
23+ 日本語 Deutsch Français
Languages Español Italiano Polski

Printer Printer Printer Printer
Printer Printer Printer Printer
Printer Printer Printer Printer
Printer Printer Printer Printer

163+
Font Styles

791+
Symbol

287+
Border

Figure 6: Multi-functional Editing Options

A woman with long brown hair, wearing a blue and white striped shirt, is organizing clear plastic storage containers on a kitchen counter. The containers are filled with various dry goods and labeled with black tags: 'CHICKPEAS', 'PEA PASTA', 'RED LENTILS', 'MASH', 'BEANS', 'RICE MIX', and 'LENTILS'. A bag of yellow cornmeal is also visible on the counter. The background shows a kitchen with white hexagonal tiles and wooden shelves. The word 'Storage' is written in white text on a dark blue background in the top right corner.

A collection of school supplies arranged on a light pink background. In the top right, a dark blue banner contains the word "School" in white. Below it, a green rectangular object (possibly a pencil case or eraser) is labeled "Jack". To the left, a pink notebook is labeled "Jack", and a green notebook with a scale pattern is also labeled "Jack". A blue pencil case is visible at the bottom. Various pens and pencils in different colors (orange, pink, yellow, purple, teal) are scattered around. A small blue paper clip and a yellow rubber band are also present.

A collection of school supplies arranged on a light pink background. In the top right, a dark blue banner contains the word "School" in white. Below it, a green rectangular object (possibly a pencil case or eraser) is labeled "Jack". To the left, a pink notebook is labeled "Jack", and a green notebook with a scale pattern is also labeled "Jack". A blue pencil case is open at the bottom, showing a pink pen and an orange pencil. Other items include a yellow pencil, a purple pencil, a teal pencil, a blue paper clip, and a yellow rubber band.

Figure 7: Label Application Examples

Multi-functional labels

Waterproof, oilproof and scratch-resistant



Figure 8: Multi-functional Label Properties

Can be used both indoors and outdoors

Plastic Indoor



Standard Outdoor



Figure 9: Indoor and Outdoor Label Usage



Figure 10: LCD Backlight for Eye Care



Figure 11: Portable Design

MAINTENANCE

1. Cleaning and Care

To ensure the longevity and optimal performance of your label maker, follow these cleaning and care guidelines:

- Regularly wipe the exterior of the device with a soft, dry cloth.
- Do not use abrasive cleaners or solvents.
- Keep the label maker away from excessive dust, moisture, and extreme temperatures.
- Ensure the print head and cutter area are free from adhesive residue or paper dust. Use a cotton swab lightly dampened with rubbing alcohol if necessary, but ensure the device is off and completely dry before use.

2. Battery Life

The 1200mAh lithium battery provides long-lasting use. For best battery health, avoid completely draining the battery frequently. If the device will not be used for an extended period, it is recommended to charge it periodically to maintain battery capacity.

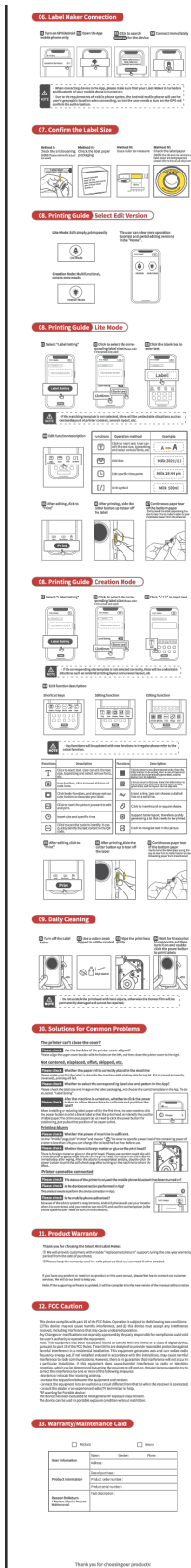
TROUBLESHOOTING

If you encounter issues with your Phomemo LT12 Label Maker, refer to the following common problems and solutions:

Problem	Possible Cause	Solution
Device does not turn on.	Low battery; Power button not pressed correctly.	Charge the device; Press and hold the Power button firmly.
Label not printing or print is faint.	Tape cassette incorrectly installed; Tape run out; Print head dirty.	Reinstall tape cassette; Replace tape; Clean the print head.
Bluetooth connection fails.	Bluetooth off on device/phone; App permissions; Device too far.	Ensure Bluetooth is on for both devices; Grant app permissions; Move devices closer.
Labels are jammed.	Incorrect tape installation; Debris in cutter.	Open compartment, remove tape, clear jam, reinstall tape; Clean cutter.

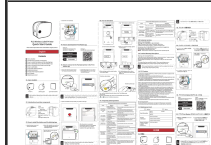
SPECIFICATIONS

Feature	Detail
Model Name	LT12
Brand	Phomemo
Connectivity Technology	Bluetooth
Printing Technology	Thermal and Thermal Transfer
Compatible Devices	Smartphones, Tablets (iOS, Android)
Max Print Speed Monochrome	60 ppm
Maximum Black and White Print Resolution	203 DPI
Printer Media Size Maximum	12mm label width
Product Dimensions	6.7D x 10W x 22.2H cm
Item Weight	298 g
Battery	1200mAh Lithium Polymer (included)







[Phomemo D35 Wireless Bluetooth Label Maker: User Guide and Features](#)

A comprehensive user guide for the Phomemo D35 wireless Bluetooth label maker. Learn how to set up, use the smartphone app, and print custom labels for home and office organization with this portable mini label printer.



[Phomemo P12 Wireless Label Maker Quick Start Guide](#)

A concise guide to setting up and using the Phomemo P12 Wireless Label Maker, covering installation, connectivity, app usage, and printing.

<div><div><div>Instruction</div><div>D30</div><div>Product Instruction</div></div><div><p><small>Please read this instruction book carefully before operating the product.</small></p></div></div>	<p>Phomemo D30 Smart Mini Label Maker Product Instruction Manual</p> <p>Comprehensive user guide for the Phomemo D30 Smart Mini Label Maker, detailing item checklist, specifications, parts and features, power and indicator lights, usage instructions, app download and connection, label size identification, printing modes (Lite and Creation), daily cleaning, troubleshooting, warranty information, and FCC compliance.</p>
<div><div><div>Instruction</div><div>Q31</div><div>Product Instruction</div></div><div><p><small>Please read this instruction book carefully before operating the product.</small></p></div></div>	<p>Phomemo Q31 Smart Mini Label Maker: Product Instruction Manual</p> <p>Comprehensive user manual for the Phomemo Q31 Smart Mini Label Maker, covering setup, specifications, usage, printing guides, cleaning, troubleshooting, and warranty information.</p>
<div><div><div>User Guide</div><div>M110</div></div><div><p>English</p></div></div>	<p>Phomemo M110 Label Maker User Guide</p> <p>Comprehensive user guide for the Phomemo M110 label maker, covering product introduction, setup, app usage, paper replacement, PC application installation, safety instructions, cleaning, maintenance, and regulatory information.</p>
<div></div>	<p>Phomemo M200 Portable Label Printer: User Manual and Specifications</p> <p>Comprehensive guide to the Phomemo M200 portable label printer, covering product specifications, parts, installation, app connection, settings, and regulatory information. Includes multilingual support details.</p>