



[Manuals.plus](#) /

> [NORTEK](#) /

> NORTEK 1041648R Controller Board User Manual

## NORTEK 1041648R

# NORTEK 1041648R Controller Board User Manual

Model: 1041648R

## 1. INTRODUCTION

---

This manual provides essential information for the proper installation, operation, and maintenance of your NORTEK Partners Choice/NORDYNE 1041648R Controller Board. Please read this manual thoroughly before attempting any installation or operation to ensure safe and efficient use of the product. This controller board is designed to enhance the performance of compatible HVAC systems.

## 2. SAFETY INFORMATION

---

### **WARNING: Electrical Shock Hazard**

- Always disconnect power to the HVAC system before installing, servicing, or removing the controller board.
- Installation and servicing should only be performed by a qualified HVAC technician.
- Failure to follow these instructions could result in electrical shock, fire, property damage, or personal injury.
- Ensure all wiring connections are secure and comply with local electrical codes.

This device contains sensitive electronic components. Handle with care to prevent damage from electrostatic discharge.

## 3. PRODUCT OVERVIEW

---

The NORTEK 1041648R Controller Board is a replacement component for HVAC systems, featuring a robust design for reliable performance. It is equipped with an LCD or LED display for clear information and easy setup.

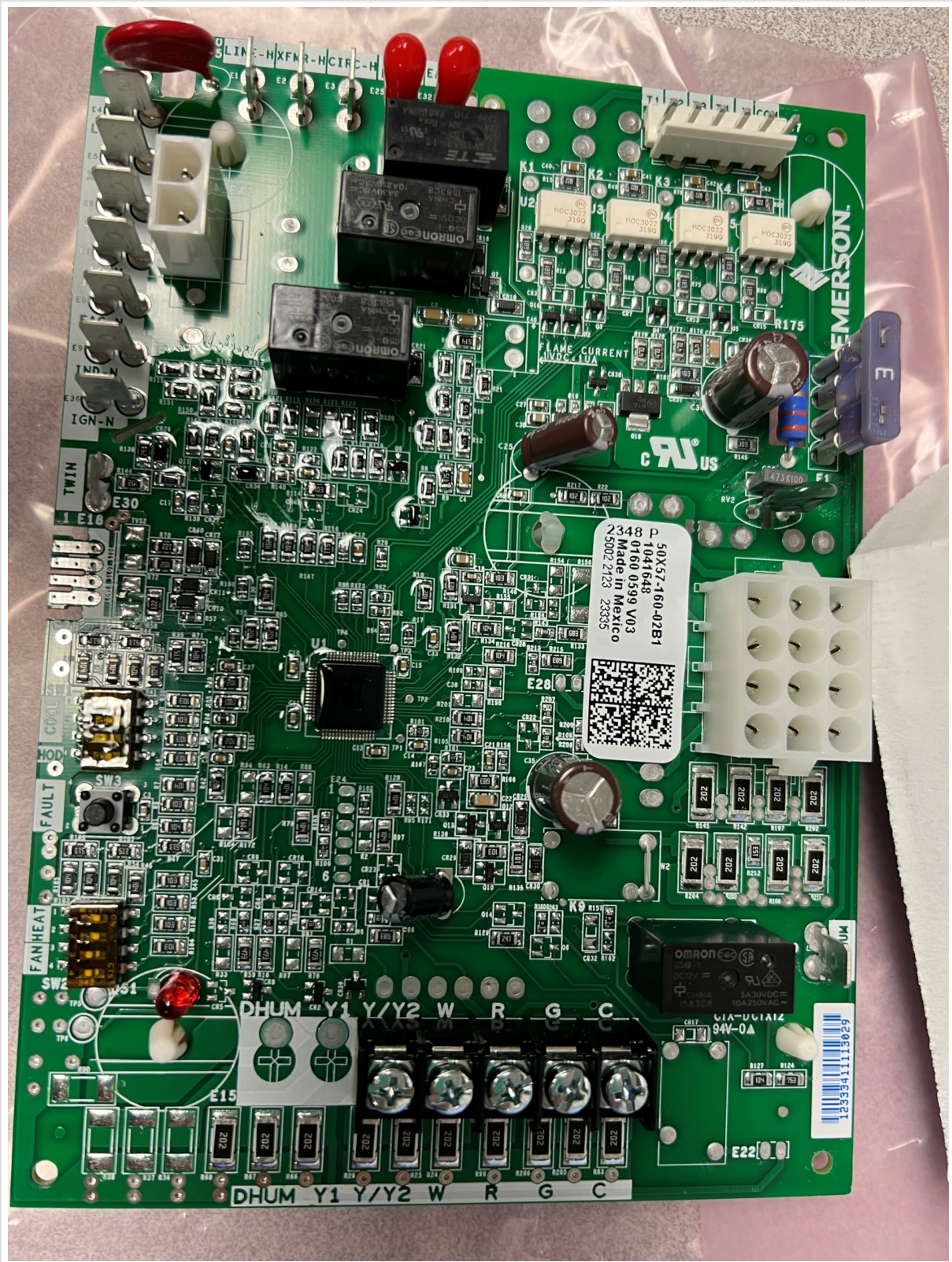


Figure 1: NORTEK 1041648R Controller Board. This image shows the green-colored controller board with various connectors and electronic components, typical of an HVAC control unit.

Key features include:

- **Advanced Control:** Equipped with an LCD or LED display for easy navigation and setup.
- **Durable Construction:** Built to last with a robust design and high-quality materials.
- **Green Energy Efficiency:** Designed to meet energy efficiency standards for reduced environmental impact.
- **Versatile Compatibility:** Suitable for various HVAC systems, ensuring wide application.
- **Reliable Performance:** Engineered by NORTEK for consistent operation.

## 4. SETUP AND INSTALLATION

---

Proper installation is crucial for the correct functioning of the controller board. It is highly recommended that installation be performed by a certified HVAC professional.

### 4.1 Pre-Installation Checks

- Verify that the NORTEK 1041648R is the correct replacement part for your HVAC system.
- Ensure all power to the HVAC unit is disconnected at the main breaker.
- Gather necessary tools, which may include screwdrivers, wire strippers, and a multimeter.

### 4.2 Installation Steps

1. **Power Disconnection:** Turn off all power to the HVAC system at the service panel. Confirm power is off using a voltage tester.
2. **Access Old Board:** Carefully open the HVAC unit's control panel to access the existing controller board.
3. **Document Connections:** Before disconnecting any wires, take clear photographs or make detailed diagrams of all wire connections to the old board. Note wire colors and terminal labels.
4. **Remove Old Board:** Disconnect all wires and mounting screws securing the old controller board. Carefully remove it.
5. **Install New Board:** Position the new NORTEK 1041648R board in the same location. Secure it with the appropriate mounting screws.
6. **Connect Wiring:** Reconnect all wires to the new board according to your documentation from step 3. Ensure each wire is securely fastened to its correct terminal.
7. **Close Panel:** Close and secure the HVAC unit's control panel.
8. **Restore Power:** Restore power to the HVAC system at the main breaker.
9. **Test System:** Perform a functional test of the HVAC system to ensure the new controller board is operating correctly.

## 5. OPERATING INSTRUCTIONS

---

Once installed, the NORTEK 1041648R Controller Board typically integrates with your existing HVAC system's thermostat and other controls. The board itself provides advanced control capabilities, often indicated via its LCD or LED display.

### 5.1 Display Navigation

The integrated display (LCD or LED) provides status information and may allow for basic configuration or diagnostic checks. Refer to your specific HVAC system's user manual for detailed instructions on how the controller board interacts with your thermostat and system settings.

- **Status Indicators:** The display will show operational status, error codes, or system parameters.
- **Configuration (if applicable):** Some boards allow for minor adjustments directly through the display interface. Consult your HVAC system documentation for specific procedures.

## 6. MAINTENANCE

---

The NORTEK 1041648R Controller Board is designed for durability and requires minimal maintenance. However, periodic inspection by a qualified technician is recommended as part of routine HVAC system servicing.

- **Visual Inspection:** During routine HVAC maintenance, have a technician visually inspect the board for any signs of damage, loose connections, or excessive dust accumulation.
- **Cleaning:** If dust is present, gently clean the board using a soft brush or compressed air. *Do not use liquids or abrasive cleaners.* Ensure power is disconnected before cleaning.
- **Environmental Conditions:** Ensure the HVAC unit's environment remains within specified operating temperatures and humidity levels to prevent damage to electronic components.

## 7. TROUBLESHOOTING

If your HVAC system experiences issues after the installation of the NORTEK 1041648R Controller Board, consider the following basic troubleshooting steps. For complex issues, contact a qualified HVAC technician.

Problem	Possible Cause	Solution
No power to the HVAC unit/board.	Main power breaker tripped or off. Loose wiring connection.	Check the main power breaker. Ensure all wiring connections to the board are secure.
Display not illuminating or showing incorrect information.	Incorrect wiring. Board malfunction.	Verify all display-related wiring. If issue persists, contact a technician.
HVAC system not responding to thermostat commands.	Incorrect wiring between thermostat and board. Board malfunction.	Check thermostat wiring to the controller board. Consult HVAC technician for diagnosis.
System operating erratically.	Intermittent connection. Component failure.	Power cycle the HVAC unit. If the problem continues, professional diagnosis is required.

## 8. SPECIFICATIONS

Feature	Detail
Brand	NORTEK
Model Number	1041648R
Display Type	LCD or LED
Color	Green
UPC	663132449767
Manufacturer	NORTEK

## 9. SUPPORT

For technical assistance, warranty information, or to report issues, please contact NORTEK customer support or your authorized NORTEK dealer. Ensure you have your product model number (1041648R) available when contacting support.

