

**Manuals+**

[Q & A](#) | [Deep Search](#) | [Upload](#)

[manuals.plus](#) /

› [YEELIGHT](#) /

› [YEELIGHT Smart 20 Ft RGB LED Strip Light User Manual - Model 1-000007007](#)

**YEELIGHT 1-000007007**

# YEELIGHT Smart 20 Ft RGB LED Strip Light User Manual

Model: 1-000007007

Brand: YEELIGHT

## INTRODUCTION

This manual provides detailed instructions for the installation, operation, and maintenance of your YEELIGHT Smart 20 Ft RGB LED Strip Light. Please read this manual thoroughly before using the product to ensure proper function and safety.



Image: The YEELIGHT Smart RGB LED Strip Light, showing the product box, a smartphone displaying the control app, and the coiled LED strip.

### WHAT'S IN THE BOX

Verify that all components are present in the package:

- Light Strip
- User Manual

### SPECIFICATIONS

Brand	YEELIGHT
Model Number	1-000007007
Color	White (Strip), Multicolor (Light)
Length	20 Feet
Light Source Type	LED (108 LEDs)

Power Source	Corded Electric
Voltage	24 Volts
Wattage	12 watts
Control Method	App, Touch
Connectivity	Bluetooth
Indoor/Outdoor Usage	Indoor, Outdoor
Material	Acrylonitrile Butadiene Styrene, Copper, Polystyrene, Polyvinyl Chloride

## SETUP

Follow these steps to install your YEELIGHT Smart LED Strip Light:

1. **Prepare the Surface:** Wipe the surface where the light strip will be installed using an alcohol pad to ensure it is clean and smooth. This promotes optimal adhesion.
2. **Apply the Strip:** Peel off the backing of the light strip and firmly secure it to the prepared surface.
3. **Adjust Length (if needed):** If the strip is too long, cut off the excess length at designated cutting marks. Refer to the product video for visual guidance on cutting.
4. **Power On and Connect:** Power the light strip using the control box. Then, use the control box or the YEELIGHT app to control the light strip.

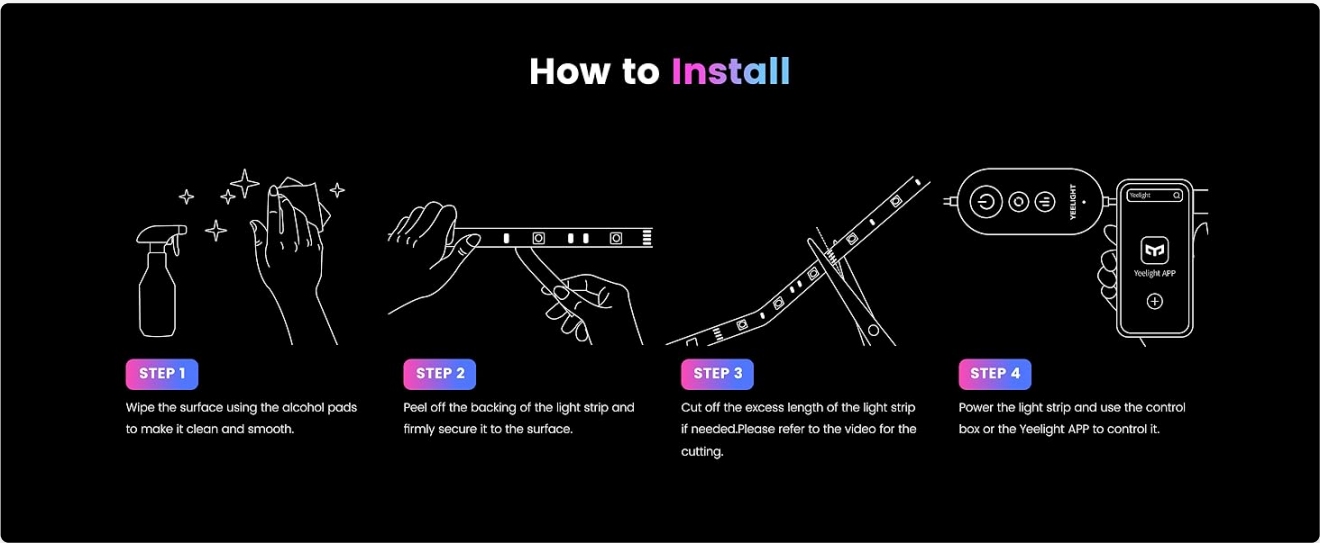


Image: A visual guide illustrating the four steps for installing the LED strip light: cleaning the surface, peeling the adhesive, cutting the strip at marked points, and connecting to power for app control.

## OPERATING INSTRUCTIONS

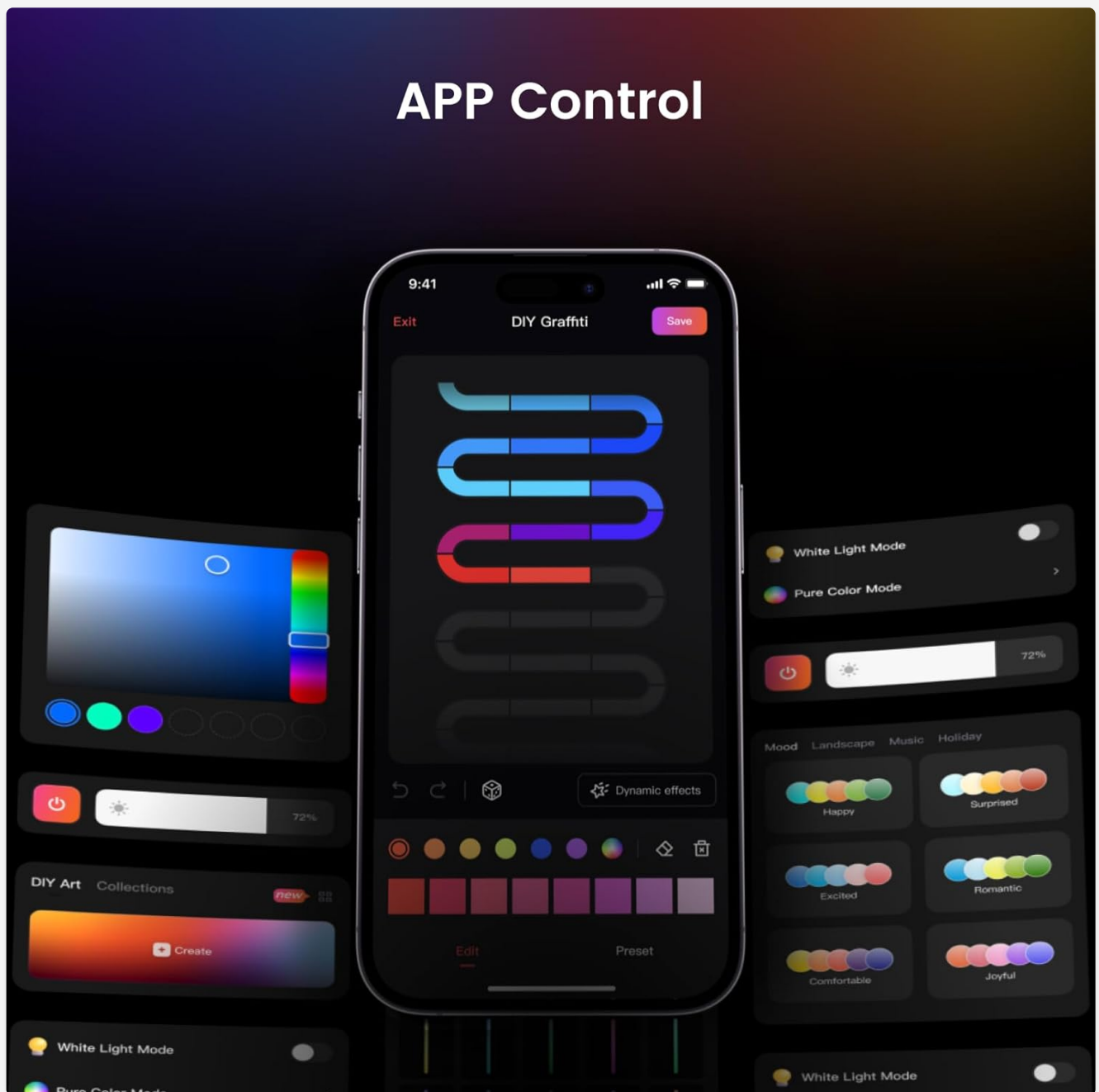
The YEELIGHT Smart LED Strip Light offers various control options and lighting effects:

### App Control

Download the YEELIGHT app to your smartphone to access full control over your light strip. The app allows you to:

- Adjust lighting color and brightness.

- Select from over 20 preset lighting effects.
- Create custom color schemes and dynamic effects.
- Set schedules and timers.



*Image: A smartphone displaying the YEELIGHT app, showcasing options for DIY graffiti lighting, dynamic effects, and various mood settings for the LED strip lights.*

## Music Sync Feature

The light strip can react to music beats through its built-in microphone or your phone's microphone, syncing perfectly with the rhythm. This feature is ideal for creating an immersive atmosphere for parties or relaxation.

# Music Flow



*Image: A room illuminated by colorful LED strip lights, with two individuals playing musical instruments, demonstrating the music sync feature.*

## RGBIC Technology

This light strip utilizes RGBIC technology, allowing for independent control of each LED. This enables more dynamic and customizable lighting effects compared to standard RGB strips.



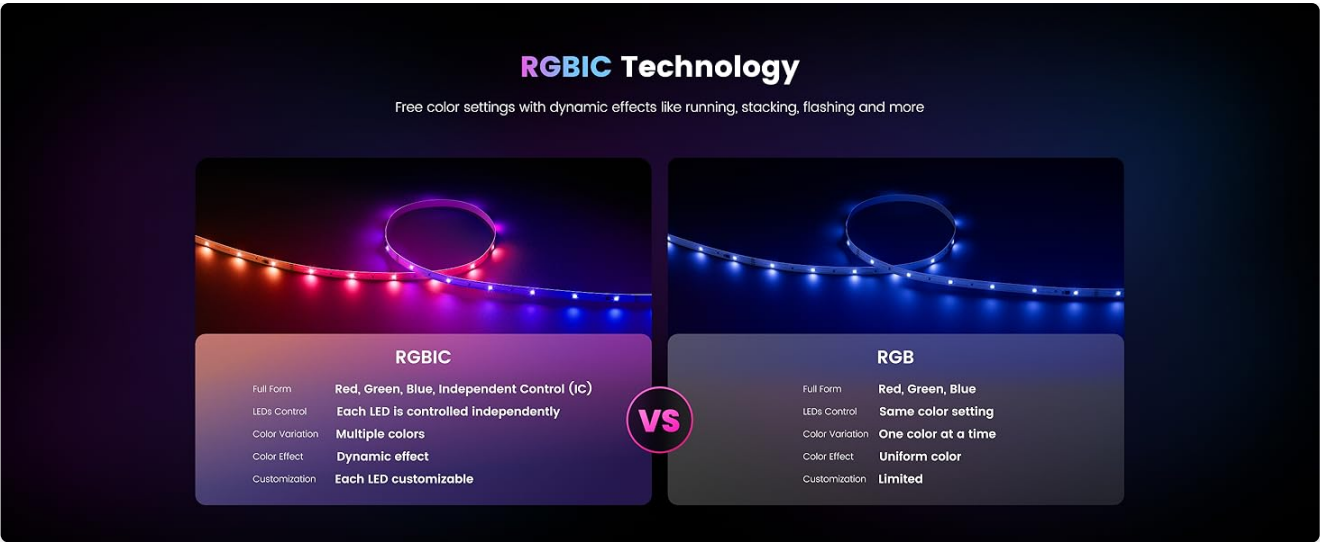


Image: A comparison graphic illustrating the difference between RGBIC and RGB LED strip technologies, highlighting RGBIC's ability for multiple colors and dynamic effects.

## MAINTENANCE

To ensure the longevity and optimal performance of your LED strip light, follow these maintenance guidelines:

- **Cleaning:** Gently wipe the surface of the LED strip with a dry, soft cloth to remove dust. Avoid using harsh chemicals or abrasive cleaners.
- **Adhesion:** Periodically check the adhesion of the strip. If it starts to peel, re-secure it with appropriate adhesive if necessary.
- **Power Supply:** Ensure the power adapter and connections are secure and free from damage. Disconnect power before performing any cleaning or adjustments.
- **Environmental Conditions:** While rated for indoor/outdoor use, avoid prolonged exposure to extreme weather conditions (e.g., heavy rain, direct sunlight for extended periods) to prevent damage.

## TROUBLESHOOTING

If you encounter issues with your YEELIGHT Smart LED Strip Light, refer to the following common solutions:

Problem	Possible Cause	Solution
Lights do not turn on.	No power, loose connection, faulty adapter.	Check power outlet, ensure all connections are secure, try a different power source if possible.
Cannot connect to the app.	Bluetooth disabled, app glitch, strip not in pairing mode.	Ensure Bluetooth is enabled on your device. Restart the app and the light strip. Follow app instructions for pairing.
Lights flicker or display incorrect colors.	Loose connection, power fluctuation, damaged section of strip.	Check all physical connections. Ensure power supply is stable. If a section is damaged, consider replacing the strip.
Music Sync not working.	Microphone blocked, app settings incorrect.	Ensure the microphone (on the control box or phone) is not obstructed. Check music sync settings within the YEELIGHT app.

If these steps do not resolve the issue, please contact customer support.

## OFFICIAL PRODUCT VIDEOS

---

Watch these official videos for additional product information and usage examples:

### Yeelight Outdoor Strip Permanent Light for Christmas/Party

Your browser does not support the video tag.

*Description: This video showcases the YEELIGHT LED strip lights being used for various festive occasions, including Christmas and parties, demonstrating their versatility and dynamic lighting capabilities.*

## WARRANTY AND SUPPORT

---

For warranty information and customer support, please refer to the official YEELIGHT website or contact their customer service directly. Details are typically provided on the product packaging or within the YEELIGHT app's help section.

You can visit the official YEELIGHT store on Amazon for more products and support:[YEELIGHT Official Store](#)

