

**Xiaomi L43MA-AUIN**

# Xiaomi MI A Pro 4K Dolby Vision Smart Google LED TV User Manual

Model: L43MA-AUIN | Brand: Xiaomi

## 1. INTRODUCTION

This manual provides essential information for the setup, operation, maintenance, and troubleshooting of your Xiaomi MI A Pro 4K Dolby Vision Smart Google LED TV. Please read this manual thoroughly before using the product to ensure safe and optimal performance.



Image: Front view of the Xiaomi MI A Pro 4K Smart Google LED TV.

## 2. SETUP GUIDE

### 2.1. Unboxing and Package Contents

Carefully remove the TV and all components from the packaging. Ensure all items listed below are present:

- 1 x Xiaomi MI A Pro 4K LED TV
- 2 x Table Stand Base
- 1 x Remote Control
- 1 x AC Power Cord
- 2 x AAA Batteries (for remote control)

### 2.2. Stand Installation

If you plan to place the TV on a table, follow these steps to attach the stand bases:

1. Place the TV face down on a soft, flat surface to prevent screen damage.

2. Align each table stand base with the corresponding screw holes on the bottom of the TV.
3. Secure the stand bases using the provided screws. Ensure they are firmly attached.

### 2.3. Wall Mounting (Optional)

The TV supports VESA wall mounting. A wall mount bracket is not included. For wall mounting, it is recommended to consult a professional installer to ensure proper and safe installation.

### 2.4. Connecting Devices

Connect your external devices to the TV using the appropriate ports:

- **Power:** Connect the AC power cord to the TV's power input and then to a wall outlet.
- **HDMI:** Use the 3 HDMI ports (HDMI 2.1 compatible) for gaming consoles, set-top boxes, Blu-ray players, etc.
- **USB:** Use the 2 USB ports for connecting hard drives or other USB devices.
- **Ethernet:** For a wired internet connection, connect an Ethernet cable to the LAN port.
- **Optical:** For digital audio output to a soundbar or home theater system.



Image: Side view of the TV highlighting connectivity ports.

### 3. OPERATING YOUR TV

#### 3.1. Remote Control

Insert the two AAA batteries into the remote control. The Xiaomi 360° remote control offers various functions for easy navigation:

- **Quick Mute:** Double tap the volume down button.
- **Quick Wake:** Turn on the TV in less than 5 seconds.
- **Quick Settings:** Long press the PatchWall button to access quick settings.

## Xiaomi 360° Remote Control



#### Quick Mute

Double tap volume down button to mute

#### Quick Wake

Turn on TV in less than 5 sec

#### Quick Settings

Long press the patchwall button to enter quick settings menu

Image: Xiaomi 360° Remote Control with highlighted quick functions.

#### 3.2. Initial Setup and Google TV

Upon first power-on, the TV will guide you through the initial setup process. This includes:

- Language selection.

- Network connection (Wi-Fi or Ethernet).
- Google account sign-in for Google TV features.

Google TV organizes movies, shows, and more from your subscribed apps, providing personalized recommendations.

### 3.3. Google Assistant

Your TV comes with Google Assistant built-in. Press the Google Assistant button on your remote and speak commands to:

- Search for content (e.g., "Play Stranger Things").
- Control smart home devices.
- Get answers to questions.

# Google Assistant

 Hey Google ...Play Stranger Things



 Chromecast Built-in

Image: Google Assistant in action on the TV screen.

### 3.4. Supported Applications and Xiaomi TV+

The TV supports popular streaming applications such as Netflix, Prime Video, YouTube, and Disney+Hotstar.

Additionally, Xiaomi TV+ provides access to over 200 free live TV channels and 20+ OTT channels without subscription fees.

# Xiaomi TV+

All the entertainment you want at zero cost. Get instant access to up to 200+ free live TV channels - news, sports, movies, series, music and more, across Xiaomi Smart TVs.

No subscriptions ever.



**200+**  
Channels



**No More**  
Subscription Fees



**No Hidden**  
Cost



**Seamless**  
Streaming

Image: Xiaomi TV+ interface displaying available free channels.

## 4. KEY FEATURES

### 4.1. Display Technology

The Xiaomi MI A Pro TV features a 4K Ultra HD (3840 x 2160) display with a 60Hz refresh rate, offering crisp and clear visuals. It supports advanced display technologies:

- **4K HDR:** Enhanced contrast and color detail.
- **Dolby Vision & HDR10:** Superior dynamic range for lifelike images.
- **HLG:** Hybrid Log-Gamma support for broadcast HDR.
- **Vivid Picture Engine:** Optimizes color, contrast, and clarity for an immersive viewing experience.
- **Reality Flow MEMC:** Motion Estimation, Motion Compensation technology reduces motion blur and judder, ensuring smooth action sequences.



# 4K HDR Display

Crystal Clear Clarity



Image: Visual representation of 4K HDR Display capabilities.



# Vivid Picture Engine 2



1 Billion+  
Colours



Wide Angle  
Viewing

HDR 10

Image: Vivid Picture Engine 2 enhancing visual quality.



# Reality Flow

*Crystal Clear Motion*



Image: Reality Flow MEMC technology for crystal clear motion.

## 4.2. Audio System

Experience powerful and immersive sound with the TV's 30 Watts audio output. It supports advanced audio technologies:

- **Dolby Audio:** Delivers rich, clear, and powerful sound.
- **DTS-X & DTS Virtual: X:** Provides multi-dimensional audio for a cinematic experience.

# 30W Powerful Speaker

 Dolby Audio

 dts X

 dts VIRTUAL X

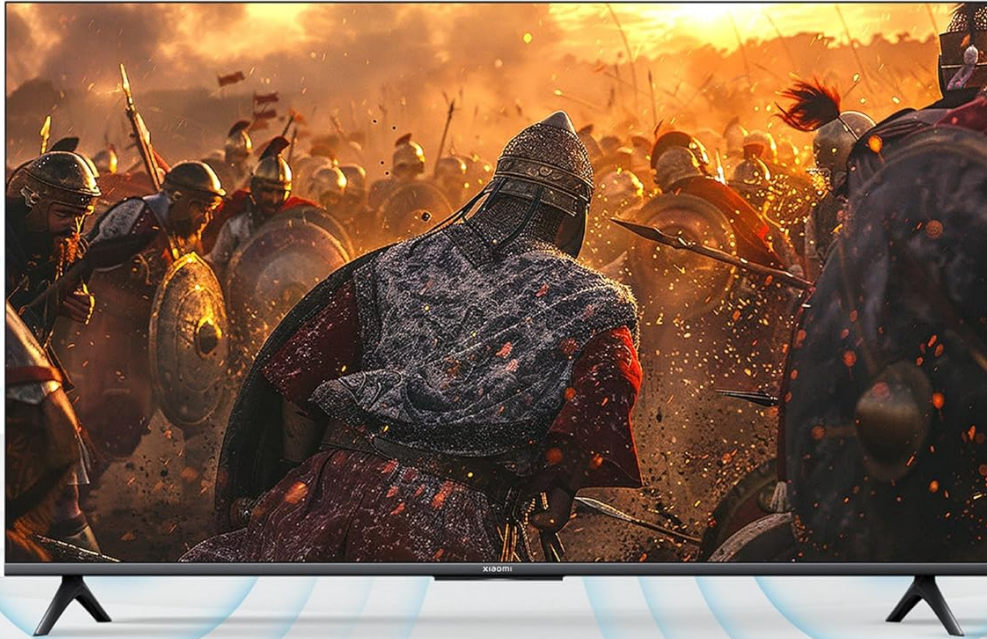


Image: Visual representation of the 30W powerful speaker system.

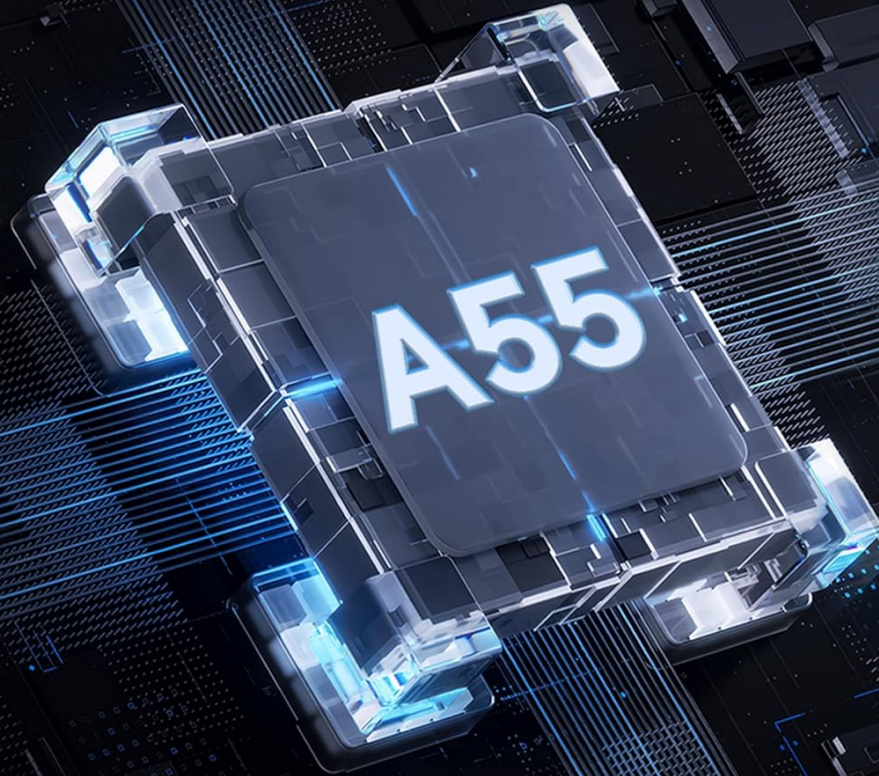
## 4.3. Performance and Connectivity

The TV is equipped with a robust processor and ample memory for smooth operation:

- **Processor:** Quad Core Processor (A55) for efficient performance.
- **Memory:** 2GB RAM and 8GB ROM for smooth multitasking and app storage.
- **Dual Band Wi-Fi:** Supports both 2.4GHz and 5GHz networks for stable internet connectivity.
- **Bluetooth 5.0:** For connecting wireless accessories like headphones or game controllers.
- **ALLM (Auto Low Latency Mode):** Reduces input lag for a smoother gaming experience.
- **eARC:** Enhanced Audio Return Channel for high-quality audio transmission over HDMI.
- **Miracast:** For screen mirroring from compatible devices.



# Top Notch Performance



**8GB Storage**

Image: Depiction of the A55 processor and 8GB storage for top-notch performance.

# Easy Connectivity

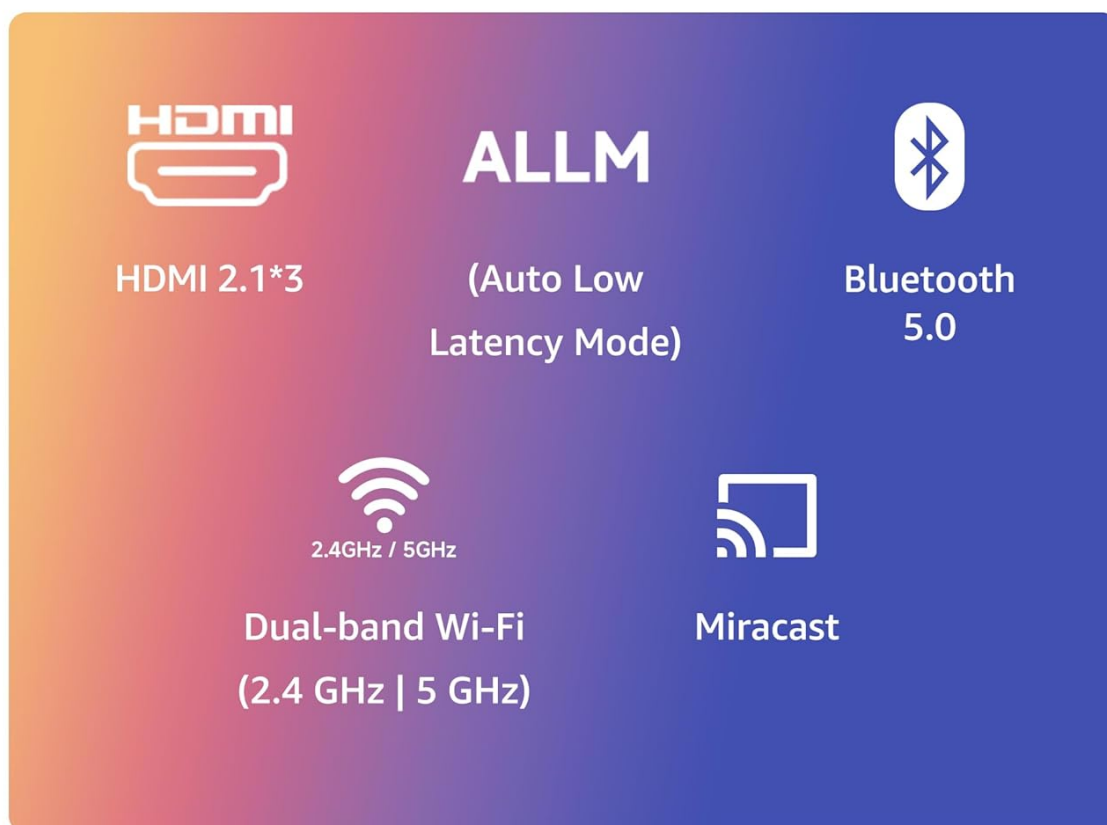


Image: Overview of easy connectivity options including HDMI, ALLM, Bluetooth, Wi-Fi, and Miracast.

## 5. MAINTENANCE AND CARE

Proper maintenance ensures the longevity and optimal performance of your TV:

- **Cleaning the Screen:** Use a soft, lint-free cloth specifically designed for electronics. Do not use harsh chemicals or abrasive materials. Lightly dampen the cloth with water if necessary, and gently wipe the screen.
- **Cleaning the Body:** Wipe the TV's frame and stand with a soft, dry cloth.
- **Ventilation:** Ensure the TV's ventilation openings are not blocked to prevent overheating. Maintain adequate space around the TV.
- **Software Updates:** Regularly check for and install system software updates to ensure the TV has the latest features and security patches. These can usually be found in the TV's settings menu under 'System' or 'About'.
- **Power Off:** When not in use for extended periods, it is recommended to unplug the TV from the power outlet.

## 6. TROUBLESHOOTING

If you encounter issues with your TV, refer to the following common problems and solutions before contacting customer support:

Problem	Possible Cause	Solution
No Power	Power cord disconnected; Power outlet issue; Remote batteries low.	Check power cord connection; Test outlet with another device; Replace remote batteries.
No Picture / Black Screen	Incorrect input source; Loose HDMI/AV cable; Device not powered on.	Press 'Input' button on remote to select correct source; Reconnect cables; Power on connected device.
No Sound	Volume muted/too low; Incorrect audio output setting; External audio device issue.	Unmute or increase volume; Check TV audio settings (e.g., internal speakers vs. external); Check external audio device.
Wi-Fi Connection Issues	Incorrect password; Router issue; Signal interference.	Re-enter Wi-Fi password; Restart router and TV; Move router closer or reduce interference.
Remote Control Not Responding	Low batteries; Obstruction between remote and TV; Remote not paired.	Replace batteries; Remove obstructions; Re-pair remote if it's a Bluetooth remote (refer to TV settings).

## 7. TECHNICAL SPECIFICATIONS

Detailed specifications for the Xiaomi MI A Pro 4K Dolby Vision Smart Google LED TV (Model: L43MA-AUIN):

Feature	Specification
Model	L43MA-AUIN
Screen Size	43 Inches (108 cm)
Resolution	4K Ultra HD (3840 x 2160 Pixels)
Refresh Rate	60 Hz
Display Technology	LED
HDR Support	Dolby Vision, HDR10, HLG
Operating System	Google TV
RAM	2 GB
Storage	8 GB
Audio Output	30 Watts



Feature	Specification
Audio Technologies	Dolby Audio, DTS-X, DTS Virtual: X
HDMI Ports	3 (HDMI 2.1, ALLM, eARC)
USB Ports	2
Wireless Connectivity	Dual Band Wi-Fi, Bluetooth 5.0
Product Dimensions (LxWxH)	95.74 x 8.07 x 56.22 cm (without stand)
Item Weight	6.1 kg

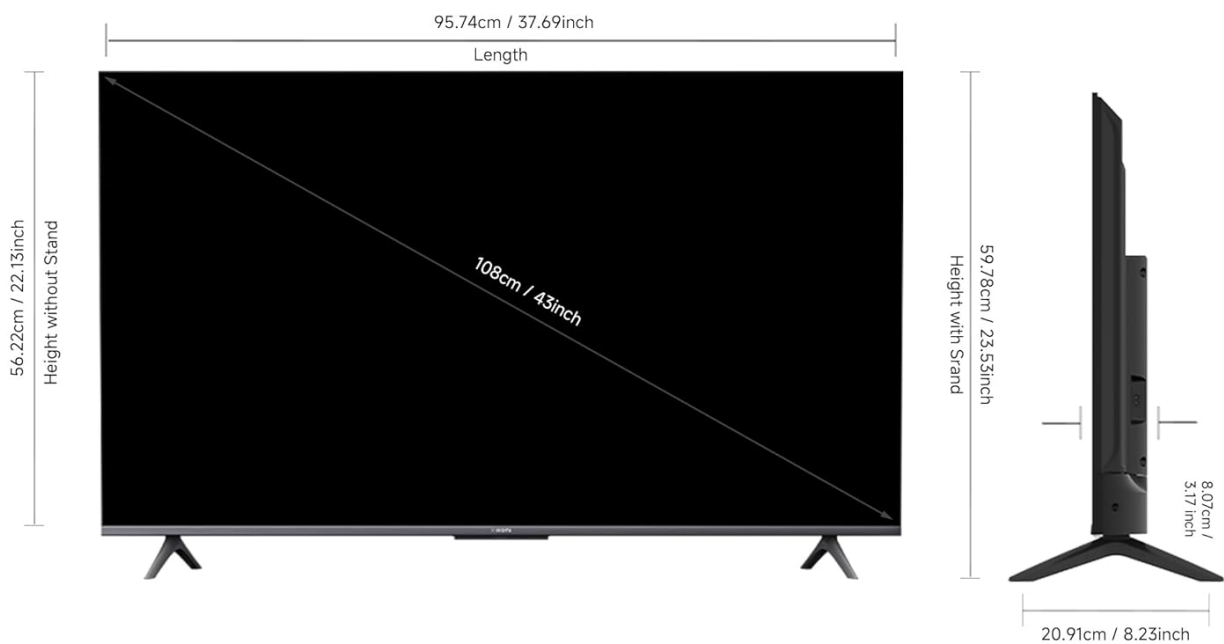


Image: Detailed product dimensions diagram.

8. WARRANTY AND SUPPORT

## 8.1. Warranty Information

Your Xiaomi MI A Pro 4K Dolby Vision Smart Google LED TV comes with a**1-year comprehensive warranty on the product** and an **additional 1-year warranty on the panel** from the date of purchase. To avail warranty services, please retain your Amazon invoice as proof of purchase.

## 8.2. Customer Support

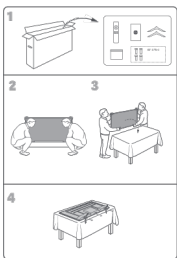

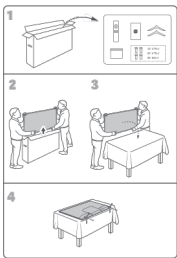
For any assistance, technical support, or service requests, you can reach Xiaomi's dedicated helpline:

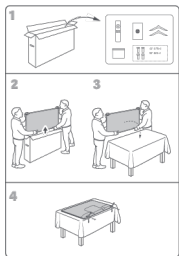
- **Helpline Number:** 1800 103 6286
- **Operating Hours:** 9 AM to 9 PM

You can also access the official user manual and additional support resources on the Xiaomi India website.

© 2024 Xiaomi. All rights reserved. Information in this manual is subject to change without notice.

### Related Documents

	<p><a href="#">Xiaomi L65MA-AEU Google TV User Manual: Safety, Installation, and Specifications</a></p> <p>Comprehensive user manual for the Xiaomi L65MA-AEU Google TV, detailing installation steps, crucial safety precautions, usage restrictions, cleaning instructions, proper disposal methods, and full technical specifications. Includes guidance on wall mounting and AC power cord safety.</p>
	<p><a href="#">Xiaomi TV Q2 Series User Manual and Specifications</a></p> <p>Comprehensive user manual and technical specifications for the Xiaomi TV Q2 series, covering installation, safety precautions, connectivity, and compliance information.</p>
	<p><a href="#">Xiaomi TV A Series 2025 User Manual &amp; Specifications</a></p> <p>Comprehensive user manual for the Xiaomi TV A Series (43", 50", 55") covering setup, safety, installation, features, and technical specifications. Learn how to unbox, install, and safely operate your new Xiaomi television.</p>



[Xiaomi TV A Pro Series \(L43MA-SEU, L55MA-SEU\) User Manual and Safety Guide](#)

Comprehensive user manual and safety guide for the Xiaomi TV A Pro series televisions (models L43MA-SEU, L55MA-SEU), covering installation, handling, safety precautions, connectivity, technical specifications, compliance, and disposal.