

Manuals+

[Q & A](#) | [Deep Search](#) | [Upload](#)

Manuals.plus /

› [CO-Z](#) /

› CO-Z Automatic Swing Gate Operator User Manual

CO-Z SGO-D440-400KGx2

CO-Z Automatic Swing Gate Operator User Manual

Model: SGO-D440-400KGx2 | Brand: CO-Z

INTRODUCTION

This manual provides detailed instructions for the installation, operation, and maintenance of your CO-Z Automatic Double Wing Gate Operator. Designed for gates up to 400kg and 6m in length, this electric gate opener enhances security and convenience for your property. Please read this manual thoroughly before installation and operation to ensure proper function and safety.

PRODUCT OVERVIEW AND KEY FEATURES

The CO-Z Automatic Swing Gate Operator is engineered for reliable and efficient gate automation. Key features include:

- **Effortless Gate Operation:** Equipped with two energy-efficient 40W copper motors, it opens double gates up to 400kg per wing or 6m length per wing at a speed of 6.5m per minute. Suitable for various gate types including steel, wood, vinyl, tubular, cladding, or chain link.
- **Customizable Closing Times:** Allows setting automatic closing times of 15, 30, 60, or 90 seconds after the gates have opened.
- **All-Weather Durability:** Features solid construction and an IP44 rated housing, designed to withstand rain, dust, and extreme temperatures ranging from -20°C to 70°C.
- **Enhanced Safety:** The gate opener is designed to stop and reverse direction upon detection of people or vehicles, ensuring safe operation.
- **Continuous Reliable Operation:** Built with full copper motors, aluminum drives, and a durable ABS housing for long-term performance.



Figure 1: Key operational features of the CO-Z Swing Gate Operator.

The system also supports multiple power supply options, including battery, household power, or solar energy, providing flexibility for various installation environments.

MEHR ALS EINE STROMVERSORGUNGSOPTION

Versorgen Sie Ihre Motoren mit Batterien,
Hausstrom oder Solarenergie



Figure 2: Power supply options for the gate operator.

INCLUDED COMPONENTS

The package includes all necessary components for installation and operation. Please verify all parts are present before beginning installation.



Figure 3: All components included in the CO-Z Automatic Swing Gate Operator package.

The main components typically include:

- Double Wing Gate Operator (2 units)
- Control Box
- Remote Controls (2 units)
- Accessory Set (various mounting brackets, bolts, nuts, keys)
- User Manual

INSTALLATION GUIDE

Installation of the CO-Z Automatic Swing Gate Operator requires careful attention to detail. It is recommended that installation be performed by individuals with basic electrical and mechanical knowledge. Always ensure power is disconnected before performing any wiring.

1. Mounting the Operators

Securely attach the gate operators to your gate and gate posts using the provided mounting brackets and

hardware. Ensure the operators are level and aligned correctly for smooth gate movement. Refer to the specific dimensions and mounting points for optimal performance.



Figure 4: Dimensions and capacity considerations for operator mounting.

2. Wiring the System

Connect the gate operators to the control box according to the wiring diagram provided in the detailed manual (not included in this summary). Ensure all electrical connections are secure and properly insulated. Connect the control box to your chosen power source (household power, battery, or solar system).

3. Initial Setup and Programming

After all physical and electrical connections are made, power on the system. Follow the instructions in the full manual to program the remote controls and set desired parameters such as automatic closing times (15, 30, 60, or 90 seconds) and obstacle detection sensitivity. The system is compatible with various accessories like alarm lights, digital keypads, and wall switches for a customized setup.

MAßGESCHNEIDERTES SYSTEM

Genießen Sie mehr technologiegestützten Komfort

Kompatibel mit

-  Alarmleuchten
-  digitalen Tastenfeldern
-  Bluetooth-Gerät
-  Sonnenkollektor
-  Wandschalter



Figure 5: Control box and compatibility with various system accessories.

OPERATING INSTRUCTIONS

Once installed and programmed, operating your CO-Z gate opener is straightforward.

Using the Remote Control

Press the designated button on your remote control to open or close the gate. The remote controls have an effective range of up to 30 meters.

Automatic Closing Function

If enabled during programming, the gate will automatically close after the set delay (15, 30, 60, or 90 seconds) once it has fully opened.

Obstacle Detection

The system is equipped with an obstacle detection feature. If the gate encounters an obstruction during closing, it will stop and reverse direction to prevent damage or injury.

SCHNELLES ÖFFNEN

Lassen Sie Ihre Tore im Handumdrehen vollständig öffnen



0,7 m/min

Max. Torgeschwindigkeit



15–22 Sek.

Öffnungszeit



33 cm

Max. Hublänge



Figure 6: Gate opening speed and stroke length.

Manual Release

In case of power outage or system malfunction, the gate can be manually operated using the provided release keys. Locate the manual release mechanism on each operator and follow the instructions in the full manual to disengage the motor and open the gate manually.

MAINTENANCE

Regular maintenance ensures the longevity and optimal performance of your CO-Z Automatic Swing Gate Operator.

- **Cleaning:** Periodically clean the gate operators and control box to remove dust, dirt, and debris. Use a soft, damp cloth. Avoid using harsh chemicals.
- **Lubrication:** Check moving parts and pivot points for smooth operation. Lubricate as recommended in the full manual to prevent friction and wear.
- **Inspection:** Regularly inspect all mounting hardware, electrical connections, and cables for signs of wear, corrosion, or damage. Tighten any loose fasteners.

- **Obstacle Sensor Check:** Test the obstacle detection feature periodically to ensure it functions correctly.
- **Weather Resistance:** The IP44 housing is designed for all-weather use, but extreme conditions may require more frequent checks.

REIBUNGSLOSER BETRIEB

Unser Toröffner ist hitze-, kälte- und korrosionsbeständig, um einen zuverlässigen und langlebigen Betrieb zu gewährleisten



Das ganze Jahr über
-20 bis 70 °C



Bei jedem Wetter
IP 44



Minimaler Lärm
58 dB Max.



Korrosions-
beständig

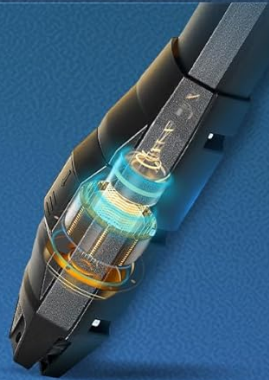


Figure 7: The gate operator is designed for smooth, all-weather, and low-noise operation.

The use of premium materials like pure copper motors and aluminum actuators contributes to the system's durability and requires minimal specialized maintenance.

PREMIUM-MATERIALIEN

Ein Toröffner, dem Sie vertrauen können



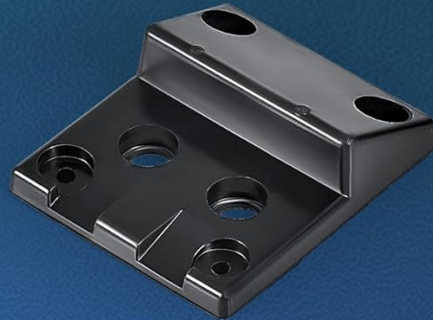
Reinkupfer-Motoren



Aluminium-Aktuatoren



Wasserdichtes Gehäuse



Bequemer Toranschlag

Figure 8: Premium materials used in the CO-Z gate operator.

TROUBLESHOOTING

If you encounter issues with your gate operator, consider the following general troubleshooting steps. For specific error codes or complex problems, refer to the detailed troubleshooting section in your complete user manual.

- **Gate Not Responding:** Check power supply connections. Ensure remote control batteries are not depleted. Verify that the manual release is fully engaged.
- **Gate Stops Mid-Operation:** Check for obstructions in the gate's path. Ensure the obstacle detection sensitivity is not set too high. Inspect wiring for loose connections or damage.
- **Unusual Noises:** Inspect for debris or obstructions in the gate's movement path. Check for loose mounting hardware. Lubricate moving parts if necessary.
- **Remote Control Range Issues:** Replace remote control batteries. Ensure there are no major obstructions between the remote and the control box.

SPECIFICATIONS

Specification	Detail
Brand	CO-Z
Model Number	SGO-D440-400KGx2
Color	Black
Item Dimensions (L x W x H)	27.95 x 2.95 x 3.15 inches (71 x 7.5 x 8 cm)
Item Weight	13 Kilograms (28.6 pounds)
Voltage	220 Volts
Wattage	80 watts (40W x 2 motors)
Max. Gate Weight (per wing)	400 kg
Max. Gate Length (per wing)	6 meters
Opening Speed	6.5 meters per minute
Automatic Closing Times	15, 30, 60, or 90 seconds
Remote Control Range	Up to 30 meters
IP Rating	IP44
Operating Temperature	-20°C to 70°C
Included Components	1 x accessory set, 1 x double wing gate operator, 1 x user manual

WARRANTY AND SUPPORT

Specific warranty details for the CO-Z Automatic Swing Gate Operator are not provided in this document. For warranty information, technical support, or to purchase additional remote controls (model WSR1), please contact CO-Z customer service directly or visit their official website.

For further assistance, please refer to the contact information provided with your product packaging or on the manufacturer's official support channels.