

GONEO 7kW 32A

GONEO Wallbox 7kW 32A EV Charging Station

USER MANUAL

1. Introduction

Thank you for choosing the GONEO Wallbox 7kW 32A EV Charging Station. This manual provides essential information for the safe and efficient operation, installation, and maintenance of your new EV charger. Please read this manual thoroughly before installation and use, and keep it for future reference.

The GONEO Wallbox is designed to provide a reliable and convenient charging solution for your electric vehicle (EV) or plug-in hybrid electric vehicle (PHEV), supporting Type 2 charging standards. It integrates advanced features such as Wi-Fi, Bluetooth, Ethernet connectivity, and app control for a seamless user experience.

2. Key Features

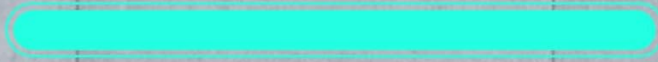
- **7kW Fast Charging:** Supports up to 7kW charging power for quick and efficient EV charging.
- **User-Friendly Connectivity:** Offers Wi-Fi, Bluetooth, and Ethernet connections for flexible network access. Easy connection to Wi-Fi within 3 minutes of power-on.
- **GONEO App Control:** Available for Android and iOS, enabling scheduled charging, remote start/stop, charging power calculation, and monthly data comparison.
- **Convenient RFID Card Charging:** Allows fast charging activation using RFID cards, suitable for multiple users in shared environments.
- **OCPP and RS485 Interface:** Facilitates remote monitoring and management of charging stations, optimizing operational efficiency for commercial applications.
- **Front Wiring Design:** Simplifies installation and maintenance with cables easily routed from the bottom. Supports both wall and pole mounting.
- **Comprehensive Safety Protection:** Certified with CB, TÜV, RoHS, REACH, IP65, and IK10. Equipped with nine key safety features: over-current, over-voltage, under-voltage, over-temperature, leakage, grounding, lightning, short-circuit, and surge protection.

High-Speed EV Charger

Save Your Charging Time



7KW 14.3h



100kWh



High-Speed EV Charging Capability

APP Remote Control



Remote
start/stop



Reservation
Mode



Calculate
electricity



Monitor
Charging Status



App Remote Control Functionality

RFID card



Protectde by RFID card prevent unauthorised persons from charging

RFID Card for Secure Charging



Convenient Front Wiring Port

100% Compatible

Compatible with All Type 2 Socket



S, 3, X, Y



EV1, Bolt Volt



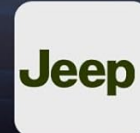
LEAF, LEAF S, LEAF S PLUS, Altra EV



EV Plus, Clarity Electric



Prius Prime, PAV4 EV, C-HR EV



Grand Cherokee 4xe, Wrangler 4xe



500e, 500e 3+1



Ioniq Electric, Kona Electric, Sante Fe Hybrid



e-Golf, ID4

Type 2 Compatibility

Suitable for Any Weather

IP65 Rated, Worry-free Charging



Waterproof



Dustproof



Weatherproof Design (IP65 Rated)

3. Setup and Installation

3.1 What's in the Box

Upon unpacking, please verify that all components are present:

- GONEO Wallbox EV Charging Station (7kW 32A with 5m Type 2 cable)
- RFID Cards (typically 2)
- User Manual
- Cable Holder
- Wall-mounting accessories (screws, anchors)

What's in the Box



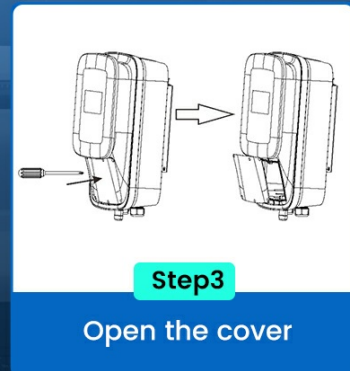
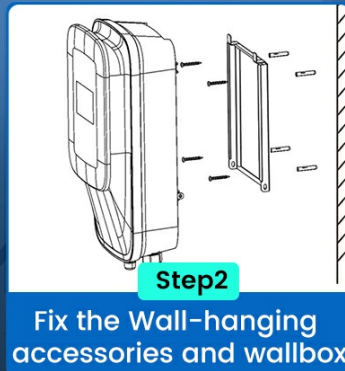
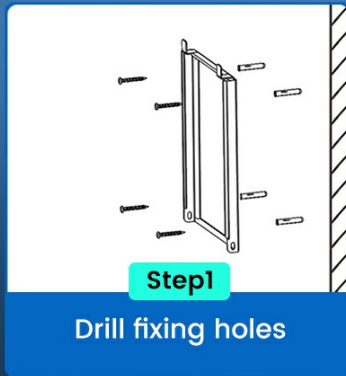
Contents of the GONEO Wallbox Package

3.2 Installation Guidelines

Installation of the GONEO Wallbox should be performed by a qualified electrician in accordance with local electrical codes and regulations. The front wiring design simplifies the process.

1. **Prepare the Mounting Surface:** Choose a suitable location for installation, ensuring it is a flat, stable surface capable of supporting the weight of the wallbox.
2. **Drill Fixing Holes:** Use the provided template or measure carefully to mark and drill the necessary fixing holes for the wall-mounting accessories.
3. **Secure Wall-hanging Accessories:** Attach the wall-hanging bracket or accessories securely to the wall.
4. **Mount the Wallbox:** Carefully attach the GONEO Wallbox to the secured wall-hanging accessories.
5. **Wiring:** Open the front cover to access the wiring terminals. Connect the power supply cables according to the wiring diagram provided in the full installation guide (not included in this general manual). Ensure proper grounding.
6. **Close and Secure:** Once wiring is complete, close the front cover and secure it.

Easy to Install



Simplified Installation Steps

Note: The product description mentions an installation video. Due to missing video source details in the provided data, the video cannot be embedded here. Please refer to the official product page or contact support for access to the installation video.

4. Operating Instructions

4.1 Starting a Charge

The GONEO Wallbox offers two primary methods for initiating a charging session:

- **RFID Card Activation:**
 - a. Ensure the charging cable is securely connected to your EV's charging port.
 - b. Tap your registered RFID card against the designated sensor area on the wallbox.
 - c. The wallbox will authenticate the card and begin the charging process.
- **App Control:**
 - a. Ensure the charging cable is securely connected to your EV's charging port.
 - b. Open the GONEO app on your smartphone or tablet.
 - c. Select your charging station and initiate charging remotely through the app interface.

4.2 Stopping a Charge

To stop a charging session:

- **RFID Card:** Tap your RFID card against the sensor again.
- **App Control:** Use the stop function within the GONEO app.
- **Vehicle Control:** Some vehicles allow stopping the charge directly from the car's infotainment system.

Once charging has stopped, safely disconnect the charging cable from your vehicle and the wallbox.

4.3 Status Indicators

The GONEO Wallbox features a dynamic LED light strip that indicates the charging status:

- **Green:** Connected to network / Standby.
- **Blue:** Charging in progress.

- **Red:** Fault state or error.

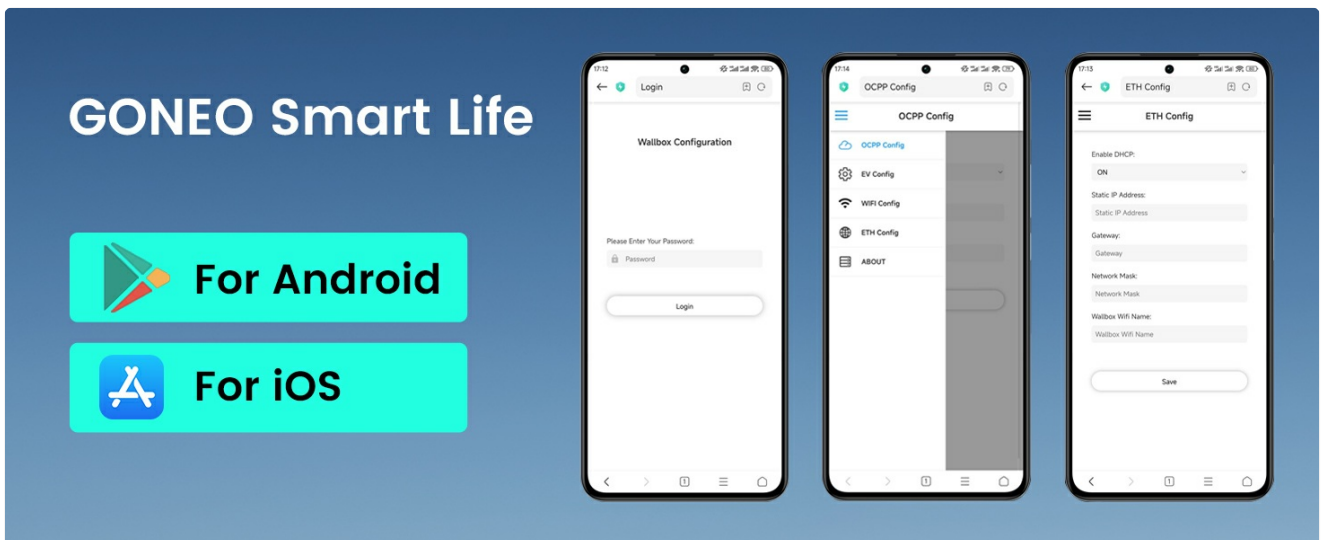


LED Indicator Status Guide

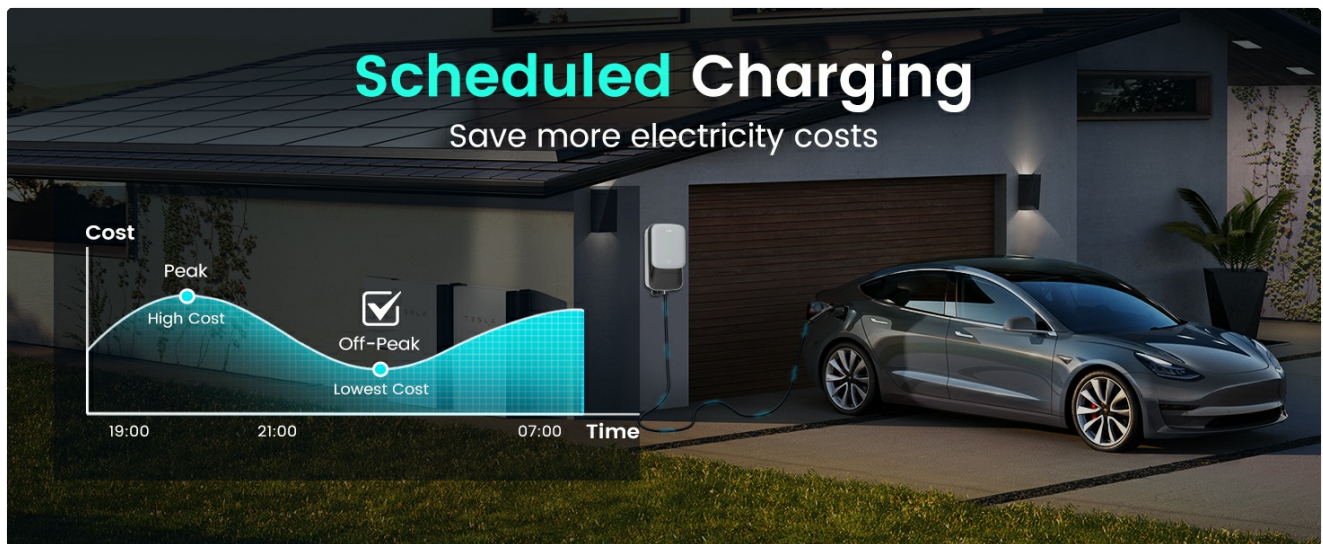
5. GONEO App Control

The GONEO app enhances your charging experience with smart features:

- **Scheduled Charging:** Set specific times for charging to take advantage of off-peak electricity rates, saving energy costs.
- **Remote Start/Stop:** Control your charging sessions from anywhere.
- **Charging Data:** Monitor real-time charging power, view historical charging records, and compare monthly data.
- **Notifications:** Receive reminders for charging completion and incorrect plug-ins.



GONEO Smart Life App Interface



Scheduled Charging for Cost Savings

Note: The product description mentions a connection video for Wi-Fi setup. Due to missing video source details in the provided data, the video cannot be embedded here. Please refer to the official product page or contact support for access to the connection video.

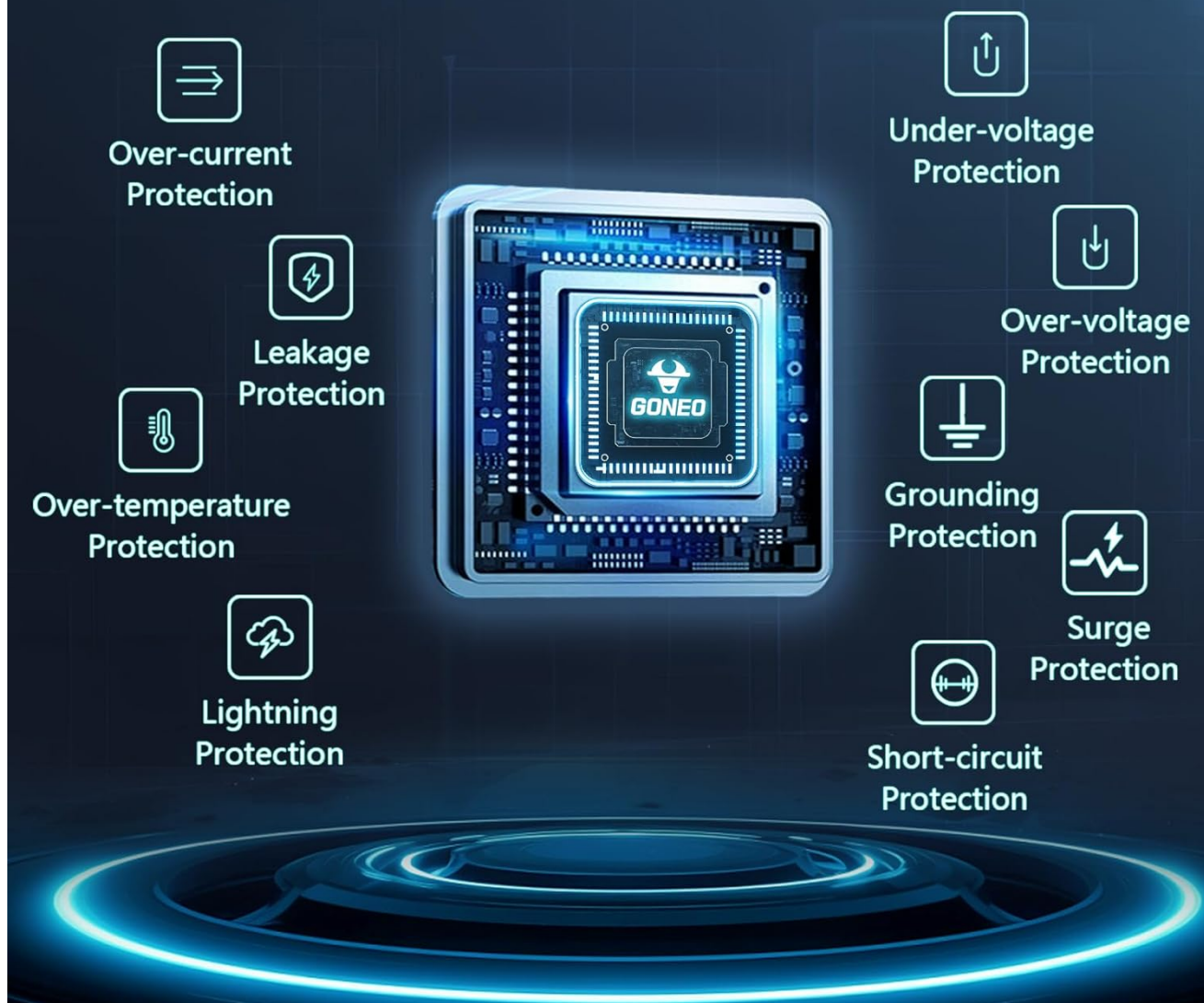
6. Safety and Protection

The GONEO Wallbox is built with robust safety features to ensure secure and reliable charging:

- **Over-current Protection:** Prevents damage from excessive current.
- **Over-voltage Protection:** Safeguards against high voltage spikes.
- **Under-voltage Protection:** Protects against insufficient voltage.
- **Over-temperature Protection:** Shuts down if internal temperature exceeds safe limits.
- **Leakage Protection:** Detects and prevents electrical leakage.
- **Grounding Protection:** Ensures proper electrical grounding.
- **Lightning Protection:** Shields against lightning strikes.
- **Short-circuit Protection:** Prevents damage from short circuits.
- **Surge Protection:** Protects against sudden power surges.

Additionally, the wallbox boasts an **IP65 rating** for water and dust resistance, making it suitable for outdoor installation in various weather conditions, and an **IK10 rating** for impact resistance, ensuring durability.

Multiple Security Protection



Integrated Multiple Security Protection



Designed for Use in Various Climates (-30°C to 55°C)

7. Maintenance

The GONEO Wallbox requires minimal maintenance. Regular checks can help ensure optimal performance and longevity:

- **Cleaning:** Periodically wipe the exterior of the wallbox with a soft, damp cloth. Do not use abrasive cleaners or solvents.
- **Cable Inspection:** Regularly inspect the charging cable for any signs of wear, damage, or fraying. If any damage is found, discontinue use and contact support.
- **Connection Points:** Ensure all connections are secure and free from debris.
- **Software Updates:** Keep the GONEO app updated to the latest version to benefit from new features and security enhancements.

8. Troubleshooting

If you encounter issues with your GONEO Wallbox, refer to the following common troubleshooting steps:

- **No Power/No Indicator Light:**
 - Check the main power supply to the wallbox.
 - Ensure the circuit breaker is not tripped.
- **Charging Not Starting:**
 - Verify the charging cable is securely connected to both the wallbox and the vehicle.
 - Ensure your RFID card is correctly registered and being tapped in the designated area.
 - Check the app for any error messages or charging schedules.
- **Red Indicator Light (Fault State):**
 - Disconnect the charging cable from the vehicle and the wallbox.
 - Power cycle the wallbox (turn off power at the breaker for a few minutes, then turn back on).
 - If the error persists, note the specific error code (if displayed) and contact customer support.
- **Wi-Fi Connection Issues:**
 - Ensure your Wi-Fi network is active and within range.
 - Restart the wallbox and try connecting again within 3 minutes of power-on.
 - Verify Wi-Fi credentials in the app settings.

For more complex issues or persistent problems, please contact GONEO customer support.

9. Specifications

Attribute	Value
Brand	GONEO
Model	7kW 32A
Item Model Number	7kw 5m led wifi
Manufacturer Part Number	D3E-B32B
Output Voltage	230 VAC




Current Rating	32 Ampere
Cable Length	5 meters
Protection Rating	IP65 (Water & Dust), IK10 (Impact)
Connectivity	WiFi, Bluetooth, Ethernet, OCPP, RS485
Item Weight	6.95 Kilograms
Package Dimensions	51.79 x 34.1 x 30.1 cm
First Available Date	July 31, 2024



10. Warranty and Support

GONEO has over 30 years of experience in the research and production of electrical appliances, ensuring high-quality products. We are committed to providing excellent pre-sales and after-sales service.

For any questions, technical assistance, or warranty claims, please contact GONEO customer support through the official channels provided at the point of purchase or on the GONEO website. Please have your product model number and purchase details ready when contacting support.

Related Documents - 7kW 32A

	<p>GONEO Electric Car Charging Station Wallbox Installation Video and Guide</p> <p>Access the installation video and guide for the GONEO Wallbox, an 11kW, 3-phase EV charging station with WiFi control and IP65/IK10 protection. This document provides essential setup information.</p>
	<p>Goneo EV Charger Wallbox Configuration Guide</p> <p>Comprehensive guide to configuring your Goneo EV Charger wallbox via web browser or mobile app, covering WLAN, LAN, 4G, and advanced settings.</p>
	<p>Goneo D3E EV Wallbox: Konfiguration über Browser und App</p> <p>Diese Anleitung beschreibt die Konfiguration der Goneo D3E EV-Ladestation. Sie lernen, wie Sie die Ladestation über die integrierte Offline-Webseite im Browser oder über die mobile App 'Goneo EV Charger' einrichten und vernetzen. Die Schritte umfassen die Verbindung mit dem WLAN-Hotspot, die Anmeldung, die Eingabe von Netzwerkeinstellungen wie WLAN, LAN und 4G sowie die Nutzung der App für eine einfache Konfiguration.</p>

	<p>GONEO 87W 5-Port USB Charging Station GNV-USA905 - Specifications and Safety</p> <p>Detailed information about the GONEO 87W 5-Port USB Charging Station (Model GNV-USA905), including specifications, features, safety instructions, and FCC compliance.</p>
	<p>GONEO 4-Port USB C Power Station - Fast Charging and Safety Features</p> <p>Discover the GONEO 4-Port USB C Power Station, featuring 30W PD fast charging, compact design, and multiple safety protections for your devices. Includes detailed input/output specifications.</p>