

AOCHUAN M2Pro

AOCHUAN Smart M2Pro Auto Face Tracking Tripod Instruction Manual

Model: M2Pro

1. PRODUCT OVERVIEW

The AOCHUAN Smart M2Pro is a versatile device designed to enhance mobile video recording and photography. It functions as an auto face tracking tripod, selfie stick, and single-axis gimbal, featuring an integrated RGB light and remote control. This manual provides instructions for its proper setup, operation, and maintenance.



Image 1.1: The AOCHUAN Smart M2Pro in various configurations, including tripod mode, selfie stick mode, and with the remote control and RGB light module.

2. WHAT'S IN THE BOX

- 1x AOCHUAN Face Tracking Tripod (Black)
- 1x RGB LED Light
- 1x Remote Control
- 1x USB-C Charging Cable
- 1x User Manual

3. SETUP INSTRUCTIONS

Follow these steps to set up your AOCHUAN Smart M2Pro for initial use:

1. **Unfold the Tripod:** Unfold the M2Pro completely, ensuring the arm and handle are in contact. This helps maintain a horizontal state for the phone holder.
2. **Extend the Pole:** Unfold the built-in extension pole to place the device on a tabletop or extend it for floor use.

3. **Position the AI Camera:** Open the lock button and turn the phone clip so the AI camera faces forward.
4. **Insert Phone:** Insert your smartphone into the phone holder (compatible with 4.0-6.2 inch smartphones without a phone case), ensuring it is secure.
5. **Power On:** Press and hold the power button to turn on the device.

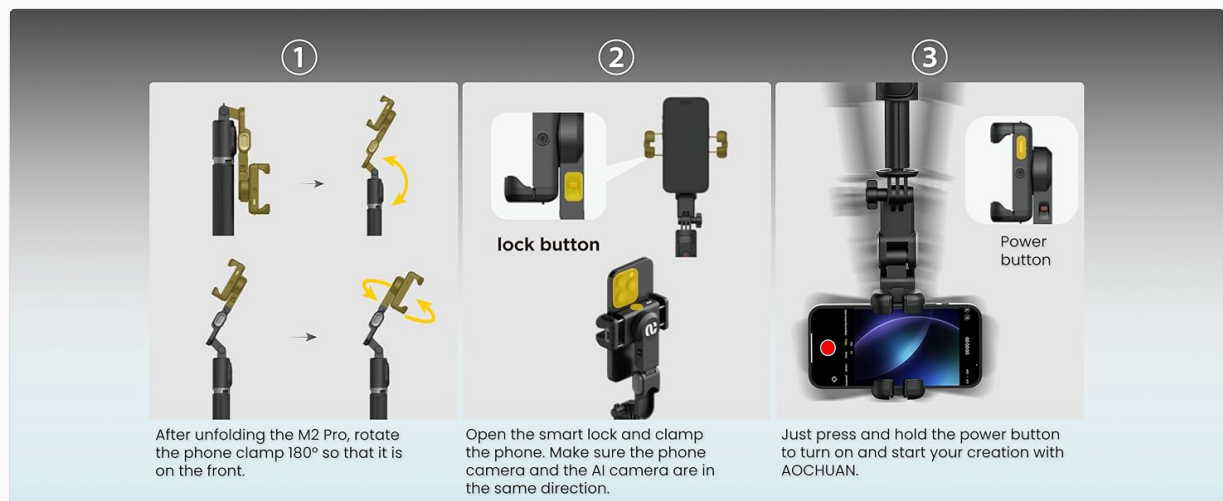


Image 3.1: Visual guide for unfolding the M2Pro, extending the pole, and powering on the device.

4. OPERATING INSTRUCTIONS

4.1. AI Face Tracking (App-Free)

The M2Pro features an integrated AI camera for automatic face tracking without requiring a dedicated app. The device will follow your movements, keeping you centered in the frame.

- **Start Tracking:** Make an 'OK' hand gesture towards the AI camera to initiate tracking.
- **Pause Tracking:** Make a 'Palm' hand gesture towards the AI camera to pause tracking.

Auto Face AI Tracking

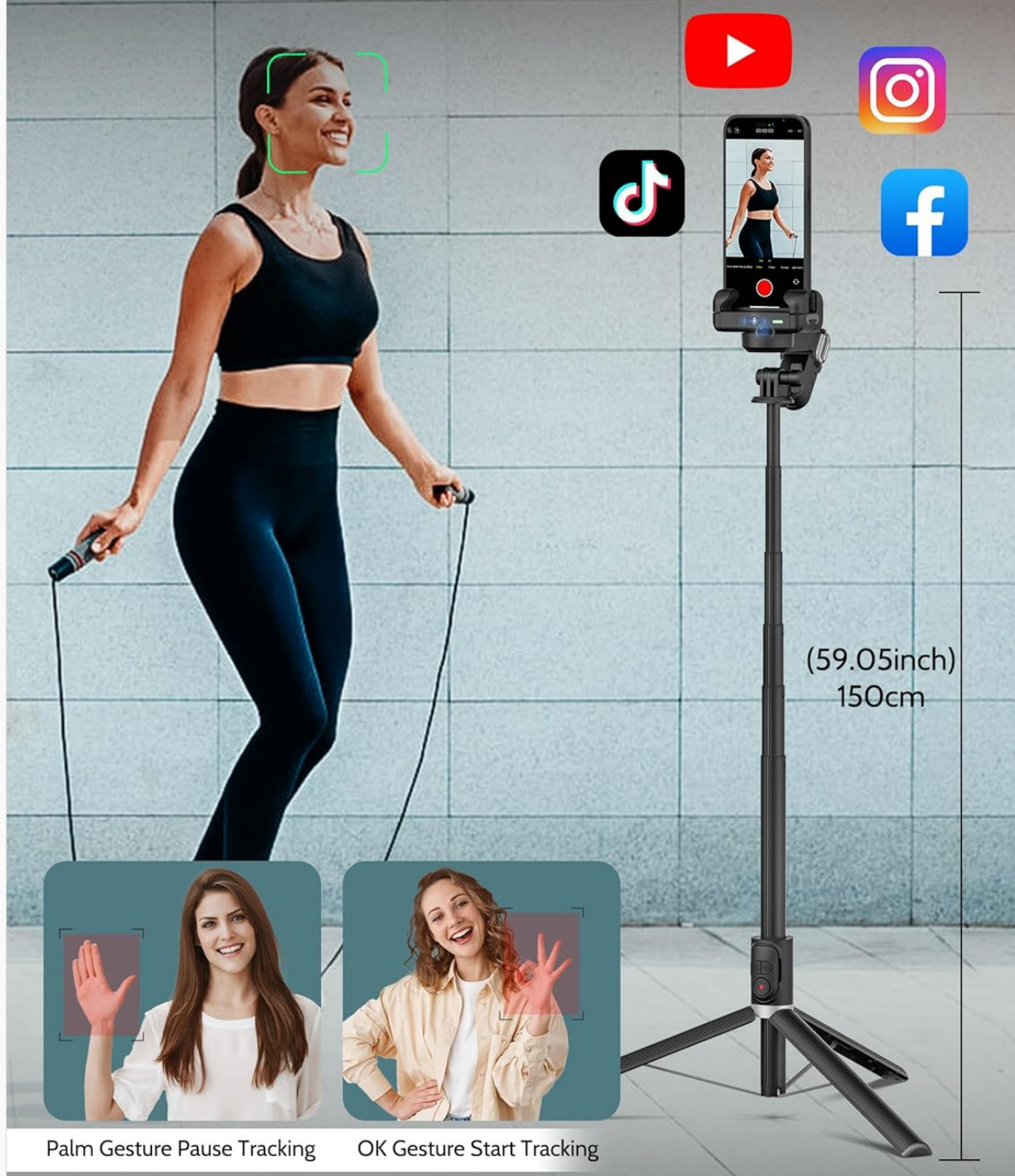


Image 4.1: The AI face tracking feature, demonstrating gesture controls for starting and pausing tracking.

4.2. Multiple Shooting Modes

The M2Pro offers various shooting modes when used as a single-axis gimbal stabilizer:

- **PF Mode (Pan Follow):** The camera pans horizontally as you move, keeping the subject in frame while maintaining a stable vertical axis.
- **POV Mode (Point of View):** The camera follows all your movements, including pan, tilt, and roll, providing an immersive perspective.
- **360° Inception Mode:** Allows for a full 360-degree rotation of the phone, creating dynamic, rotating video effects.

Anti-shake Single-axis Gimbal



Image 4.2: Examples of different shooting modes, including PF, POV, low-angle, and 360° inception.

4.3. Remote Control

The included remote control allows for convenient long-distance operation up to 10 meters.

- **Single Click:** Initiates 200° automatic rotation.
- **Double Click:** Triggers 200° forward and reverse rotation twice.
- **Triple Click:** Activates 360° unlimited rotation.



Image 4.3: Remote control functions for various rotation commands.

4.4. RGB LED Fill Light

The magnetic RGB LED fill light provides adjustable illumination for various shooting conditions.

- **Color Options:** Choose from 7 different RGB colors.
- **Brightness Adjustment:** Select from 3 levels of brightness.
- **Battery Life:** The light has an approximate 3-hour battery life.
- **Rotation:** The light is 180° rotatable for optimal positioning.



Image 4.4: The RGB LED fill light showcasing its 7 color temperatures and 3 levels of adjustable brightness.

4.5. Multifunctional Use

The M2Pro can be configured for various applications:

- **Extension Tripod:** Extend the pole for a maximum height of 59 inches, suitable for floor-standing video recording.
- **Desktop Tripod:** Use in its compact form for stable tabletop live streaming or video calls.
- **Selfie Stick:** Collapse the legs and lock the gimbal to use as a handheld selfie stick for personal or group photos.

Multifunctional Phone Tripod



Extension Tripod



Desktop tripod



Once locked, can be used as a selfie stick



Selfie Stick

Image 4.5: The M2Pro configured as an extension tripod, desktop tripod, and selfie stick.

5. MAINTENANCE

- **Cleaning:** Wipe the device with a soft, dry cloth. Avoid using harsh chemicals or abrasive materials.
- **Storage:** Store the M2Pro in a cool, dry place away from direct sunlight and extreme temperatures.
- **Charging:** Use the provided USB-C cable for charging. Ensure the device is fully charged before extended storage to preserve battery health.
- **Handle with Care:** Avoid dropping the device or subjecting it to strong impacts.

6. TROUBLESHOOTING

- **Device Not Powering On:** Ensure the battery is charged. Connect the USB-C charging cable and allow it to charge for at least 30 minutes before attempting to power on again.
- **AI Tracking Not Working:** Verify that the AI camera is unobstructed and facing forward. Ensure sufficient lighting. Confirm that the correct hand gesture is being used (OK to start, Palm to pause).
- **Remote Control Not Responding:** Check the remote control's battery. Ensure it is within the 10-meter operating range and there are no significant obstructions.
- **Phone Not Fitting in Clamp:** The adjustable phone clamp is compatible with 4.0-6.2 inch smartphones. Remove any bulky phone cases if the phone does not fit. Folding screen phones are not supported.
- **Gimbal Movement Issues:** Ensure the gimbal lock button is in the unlocked position for gimbal modes. If the device feels stiff, gently articulate the joints.

7. SPECIFICATIONS

Feature	Specification
Model Name	M2Pro
Product Dimensions (Folded)	11.81 x 1.38 x 2.36 inches (31 cm / 12.20 inches long)
Item Weight	13.9 ounces (395 Grams)
Maximum Height	59.05 Inches (150 cm)
Compatible Devices	Smartphones (4.0-6.2 inches, without phone case)
Battery Type	1 Lithium Ion battery (included)
Battery Standby Time	Up to 8 hours
Remote Control Range	Up to 10 meters
RGB Light Colors	7 colors
RGB Light Brightness	3 levels
RGB Light Battery Life	Approx. 3 hours
Material	Nylon
Tripod Head Type	Gimbal Heads
Number of Leg Sections	3

Portable and Extendable

31cm/12.20in



150cm/59.05in








Image 7.1: The M2Pro's compact folded size (31cm) and extended height (150cm).

8. WARRANTY AND SUPPORT

For warranty information and technical support, please refer to the contact details provided on the product packaging or visit the official AOCHUAN website. Keep your purchase receipt for warranty claims.

Related Documents - M2Pro

 <p>MANHVIN S620W Gimbal Selfie Stick Tripod</p> <p>EN JP DE IT ES FR RU</p>	<p>AOCHUAN S620W M1 Pro Gimbal Selfie Stick Tripod User Manual</p> <p>Comprehensive user manual for the AOCHUAN S620W M1 Pro Gimbal Selfie Stick Tripod, detailing product features, setup, modes, charging, warranty, and specifications for enhanced mobile content creation.</p>
 <p>Smart X PRO</p> <p>EN JP DE IT ES FR RU</p>	<p>AOCHUAN Smart X Pro 3-Axis Smartphone Gimbal Stabilizer User Manual</p> <p>User manual for the AOCHUAN Smart X Pro 3-axis smartphone gimbal stabilizer. Features include wireless charging, foldable design, and advanced tracking for professional video recording on iPhone and Android devices.</p>
 <p>Smart XE</p> <p>EN JP DE IT ES FR</p>	<p>AOCHUAN Smart XE Gimbal User Manual and Product Information</p> <p>Discover the features and operation of the AOCHUAN Smart XE smartphone gimbal. This guide covers product details, setup, app integration, and warranty information for this 3-axis handheld stabilizer.</p>
 <p>Smart XE</p> <p>EN JP DE IT ES FR</p>	<p>AOCHUAN Smart XE Gimbal Stabilizer User Manual and Product Information</p> <p>Explore the features and specifications of the AOCHUAN Smart XE 3-Axis Gimbal Stabilizer for smartphones. This guide covers product details, operation, charging, and warranty terms.</p>
 <p>Smart X PRO</p> <p>EN JP DE IT ES FR RU</p>	<p>AOCHUAN Smart X Pro Gimbal Stabilizer User Manual</p> <p>Explore the features and operation of the AOCHUAN Smart X Pro, a 3-axis smartphone gimbal stabilizer. This guide covers product setup, app integration, battery management, and technical specifications.</p>



Smart X

[AOCHUAN Smart X Gimbal Stabilizer User Guide](#)

Comprehensive user guide for the AOCHUAN Smart X Gimbal Stabilizer, covering product features, setup, operation, app integration, and technical specifications. Learn how to unfold, fold, charge, and utilize the various modes and functions of your smartphone gimbal for professional-quality video and photography.